

# Converting Colors

Hex(B69D92)

Have a look what the booklet for  
Hex(B69D92) contains.

<b>Hex(B69D92)</b> .....	3
<i><b>Conversions</b></i> .....	4
<i><b>Details</b></i> .....	6
<i><b>Harmonies</b></i> .....	11
<i><b>Previews</b></i> .....	23
<i><b>Color Blindness Simulation</b></i> .....	26
<i><b>CSS Examples</b></i> .....	29

# **Color**

**Hex(B69D92)**

# Conversions

## Conversions Part 1

Format	Color
Hex	B69D92
RGB	182, 157, 146
RGB Percent	71%, 62%, 57%
CMY	0.2863, 0.3843, 0.4275
CMYK	0.00, 0.14, 0.20, 0.29
HSL	18°, 20%, 64%
HSV	18°, 20%, 71%
XYZ	36.5367, 36.1343, 32.2431
YIQ	163.2210, 18.4310, 1.8790

# Conversions

## Conversions Part 2

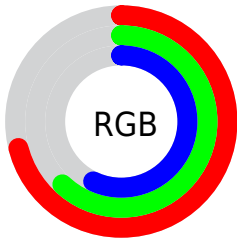
Format	Color
<a href="#">RYB</a>	<a href="#">182, 162, 146</a>
Decimal	<a href="#">11967890</a>
CIELab	<a href="#">66.62, 7.42, 9.14</a>
CIElCh	<a href="#">67, 11.777, 50.940</a>
Yxy	<a href="#">36.1343, 0.3483, 0.3444</a>
Android (android.graphics.Color)	<a href="#">4290157970 (0xFFB69D92)</a>
YUV	<a href="#">163.2210, -8.4900, 16.4692</a>
Hunter-Lab	<a href="#">60.1119, 3.2986, 10.2761</a>

# Details

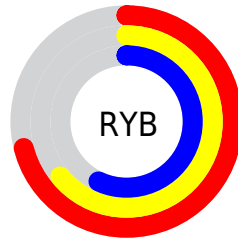
The Hex color **B69D92** is a light color, and the websafe version is hex **CC9999**. A complement of this color would be **92ABB6**, and the grayscale version is **A3A3A3**.

A 20% lighter version of the original color is **EED4C8**, and **816A60** is the 20% darker color. If you saturate the color by 10%, you get **B69080**, and if you desaturate by 10%, it is **B6AAA4**.

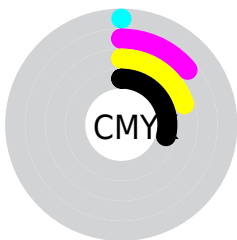
# Distribution



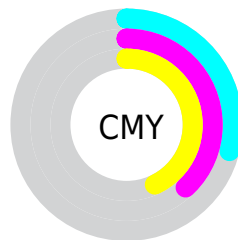
- Red (71%)
- Green (62%)
- Blue (57%)



- Red (71%)
- Yellow (64%)
- Blue (57%)



- Cyan (0%)
- Magenta (14%)
- Yellow (20%)
- Black (29%)



- Cyan (29%)
- Magenta (38%)
- Yellow (43%)

# Brightness & Saturation Gradients

These gradients show how the Hex color B69D92 changes by changing the brightness by 10 percent. The first figure shows a shift by +10% for each color and the second figure -10%.

Similar to the brightness gradients but the following saturation gradients show a change of the Hex color B69D92 by changing the saturation by 10% instead.



 B69D92

 B69D92

FFFFFF

 9B8378

 EED4C8

 816A60

 FFF0E4

 675248


 4F3B31

 37251C

 231002

 000000

 B69D92

 B69D92

 B69080

 B6AAA4

 B6846E

 B6B6B6

 B6775B

 B6C3C9

 B66A49

 B6D0DB

 B65E37

 B6DCED

 B65125

 B6E9FF

 B64513

 B6F5FF

 B63800

 B6FFFF

# Harmonies

## Analogous

The Analogous color harmony consists of three colors that are next to each other on the color wheel.



B99B9B



B69D92



AEA08D

# Triad

The Triadic color harmony groups three colors that are evenly spaced from another and form a triangle on the color wheel.



B69D92



8CA89E



A0A0B6

# Complementary

The Complementary color scheme is a pair of colors which are on the opposite of each other on the color wheel.



B69D92



92ABB6

# Split Complementary

Split-complementary colors differ from the complementary color scheme. The scheme consists of three colors, the original color and two neighbors of the complement color.



93A4B7



B69D92



87A8A9

# Square

The Square scheme is like the rectangle color scheme, but the four colors are evenly spaced on the color wheel.



B69D92



96A794



8AA7B2



AD9DAF

# Rectangle

The Rectangle color scheme consists of four colors that form a rectangle on the color wheel.



B69D92



A7A38D



8AA7B2



9CA2B7

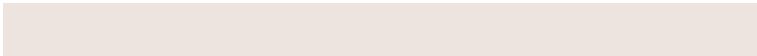


# Sweetspot

The Sweet Spot groups the original color and five complimentary colors.



B69D92



EDE3DF



B692AB



78726F



F7F7F7



787878



# Same Dimension

The Same Dimension uses a secret algorithm to generate beautiful new colors.



B69D92



EDC6B4



B6AF92



5C5553



9C3000



1C0900



# Inverse Universe

The Inverse Universe completely reimagines the original color for something new.



92ABB6



B4DCED



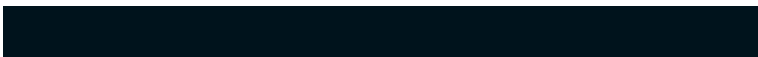
9299B6



53595C



006C9C



00131C



# Previews

## White Background



This preview shows how the Hex color B69D92 looks on a white background.

## Color Contrast Check

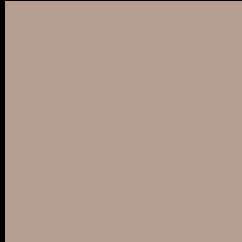
Large Text (above 18pt) WCAG AA × Fail

Any Text WCAG AA × Fail

Large Text (above 18pt) WCAG AAA × Fail

Any Text WCAG AAA × Fail

# Black Background



This preview shows how the Hex color B69D92 looks on a black background.

## Color Contrast Check

Large Text (above 18pt) WCAG AA ✓ Pass

Any Text WCAG AA ✓ Pass

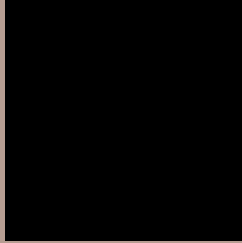
Large Text (above 18pt) WCAG AAA ✓ Pass

Any Text WCAG AAA ✓ Pass

If you want to check with other color combinations, try the [Color Contrast Checker](#).



## Hex B69D92 Background



This preview shows how black text looks on a background with the Hex color B69D92.

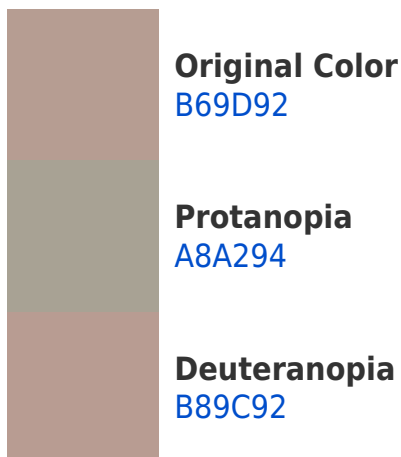


This preview shows how white text looks on a background with the Hex color B69D92.

# Color Blindness Simulation

Color vision deficiency is a very complex topic, and I could not describe the different causes any better than Wikipedia does, so if you want to learn more, you should check out their [article about color blindness](#).

## Dichromacy





**Tritanopia**  
B89AA6

# Trichromacy



**Original Color**  
B69D92

**Protanomaly**  
ADA093

**Deuteranomaly**  
B79C92

**Tritanomaly**  
B79B9F

# Monochromacy



**Original Color**  
B69D92

**Achromatopsia**  
A3A3A3

**Achromatomaly**  
AAA19D

# CSS Examples

## Text

The CSS property to change the color of the text to Hex B69D92 is called "color". The color property can be set on classes, ids or directly on the HTML element.

This example shows how text in the color #B69D92 looks like.

```
.text, #text, p{  
    color:#B69D92  
}
```

If you want to add a text shadow in that color use the text-shadow property, you can generate a text shadow directly with our [CSS Text Shadow Generator](#).

Here you see how black text with a 4 pixel #B69D92 colored shadow looks like.

```
.shadow{ text-shadow: 4px 4px 2px #B69D92
}
```

## Border

The CSS property to change the border of an element to Hex B69D92 is called "border". The border property can be set on classes, ids or directly on the HTML element.

This example shows the color as border, it can be applied via the CSS property "border" or "border-color".

```
.border, #border, table{ border:4px solid
#B69D92 }
```

If only the border color should be changed use the property `border-color`.

```
.border{ border-color:#B69D92 }
```

If you want to add a box shadow in that color use:

Here you see how a box with a 4 pixel #B69D92 colored shadow looks like.

```
.boxshadow{ -moz-box-shadow:4px 4px 4px  
4px #B69D92; -webkit-box-shadow:4px 4px  
4px 4px #B69D92; box-shadow:4px 4px 4px  
4px #B69D92 }
```

# Background

The CSS property to change the background color of an element to Hex B69D92 is called "background". The background property can be set on classes, ids or directly on the HTML element.

```
.background, #background, body{  
background:#B69D92 }
```

If only the background color should be changed can be used:

```
.background{ background-color:#B69D92 }
```

This example shows the color as background, it is applied via the CSS property "background".

To optimize and compress your CSS code, you can use our [online CSS compressor and optimizer](#) based on csstidy. If you want to create a linear or radial gradient as background or border, check our [CSS Gradient Generator](#).



Hey! You found this booklet interesting? Support Converting Colors with the new Membership Option!

The pro membership hides all ads, plus gives you double the colors in the color bucket, and more awesome pro features!

**[Learn more, Memberships starting at \\$2.50/m!](#)**

**Follow me  
on Twitter!**

@ConvertingColor