

Converting Colors

Hex(B69EAA)

Have a look what the booklet for
Hex(B69EAA) contains.

Hex(B69EAA)	3
<i>Conversions</i>	4
<i>Details</i>	6
<i>Harmonies</i>	11
<i>Previews</i>	23
<i>Color Blindness Simulation</i>	26
<i>CSS Examples</i>	29

Color

Hex(B69EAA)

Conversions

Conversions Part 1

Format	Color
Hex	B69EAA
RGB	182, 158, 170
RGB Percent	71%, 62%, 67%
CMY	0.2863, 0.3804, 0.3333
CMYK	0.00, 0.13, 0.07, 0.29
HSL	330°, 14%, 67%
HSV	330°, 13%, 71%
XYZ	38.7740, 37.3011, 43.1864
YIQ	166.5440, 10.4520, 8.8200

Conversions

Conversions Part 2

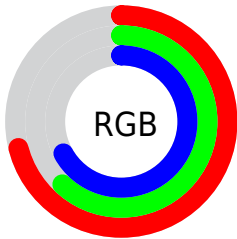
Format	Color
RYB	182, 158, 170
Decimal	11968170
CIELab	67.50, 10.90, -2.98
CIELCh	68, 11.302, 344.728
Yxy	37.3011, 0.3251, 0.3128
Android (android.graphics.Color)	4290158250 (0xFFB69EAA)
YUV	166.5440, 1.7038, 13.5549
Hunter-Lab	61.0746, 6.4423, 0.8277

Details

The Hex color **B69EAA** is a light color, and the websafe version is hex **999999**. A complement of this color would be **9EB6AA**, and the grayscale version is **A7A7A7**.

A 20% lighter version of the original color is **EED5E1**, and **816B76** is the 20% darker color. If you saturate the color by 10%, you get **B68CA1**, and if you desaturate by 10%, it is **B6B0B3**.

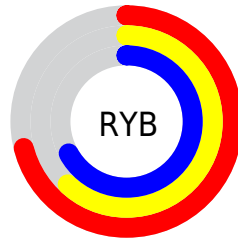
Distribution



Red (71%)

Green (62%)

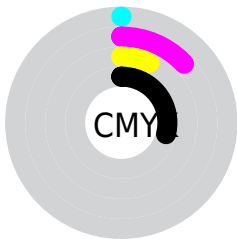
Blue (67%)



Red (71%)

Yellow (62%)

Blue (67%)

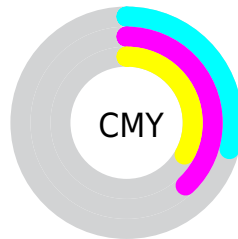


Cyan (0%)

Magenta (13%)

Yellow (7%)

Black (29%)



Cyan (29%)

Magenta (38%)

Yellow (33%)

Brightness & Saturation Gradients

These gradients show how the Hex color B69EAA changes by changing the brightness by 10 percent. The first figure shows a shift by +10% for each color and the second figure -10%.

Similar to the brightness gradients but the following saturation gradients show a change of the Hex color B69EAA by changing the saturation by 10% instead.



B69EAA



B69EAA

FFFFFF



9B8490



EED5E1



816B76



FFF1FE



68525D



503B46



38252F



23111B



000000



B69EAA



B69EAA



B68CA1



B6B0B3

 B67A98

 B6C2BC

 B6678F

 B6D5C5

 B65586

 B6E7CE


 B6437C

 B6F9D8

 B63173

 B6FFE1

 B61F6A

 B6FFEA

 B60C61

 B6FFF3

 B6005B

 B6FFFC

Harmonies

Analogous

The Analogous color harmony consists of three colors that are next to each other on the color wheel.



ACA0B3



B69EAA



BA9EA0

Triad

The Triadic color harmony groups three colors that are evenly spaced from another and form a triangle on the color wheel.



B69EAA



A7A591



8CA9B2

Complementary

The Complementary color scheme is a pair of colors which are on the opposite of each other on the color wheel.



B69EAA



9EB6AA

Split Complementary

Split-complementary colors differ from the complementary color scheme. The scheme consists of three colors, the original color and two neighbors of the complement color.



8BAAA9



B69EAA



9CA896

Square

The Square scheme is like the rectangle color scheme, but the four colors are evenly spaced on the color wheel.



B69EAA



B2A291



91AA9F



94A7B8

Rectangle

The Rectangle color scheme consists of four colors that form a rectangle on the color wheel.



B69EAA



BA9E99



91AA9F



8BAAB0

Sweetspot

The Sweet Spot groups the original color and five complimentary colors.



B69EAA



EDE4E8



AA9EB6



787275



F7F7F7



787878

Same Dimension

The Same Dimension uses a secret algorithm to generate beautiful new colors.



B69EAA



EDC7DA



B69E9E



5C5357



9C004E



1C000E

Inverse Universe

The Inverse Universe completely reimagines the original color for something new.



B69EAA



EDC7DA



9EB6B6



5C5357



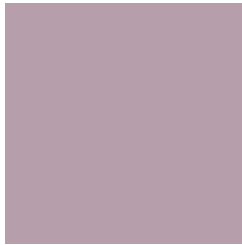
9C004E



1C000E

Previews

White Background



This preview shows how the Hex color B69EAA looks on a white background.

Color Contrast Check

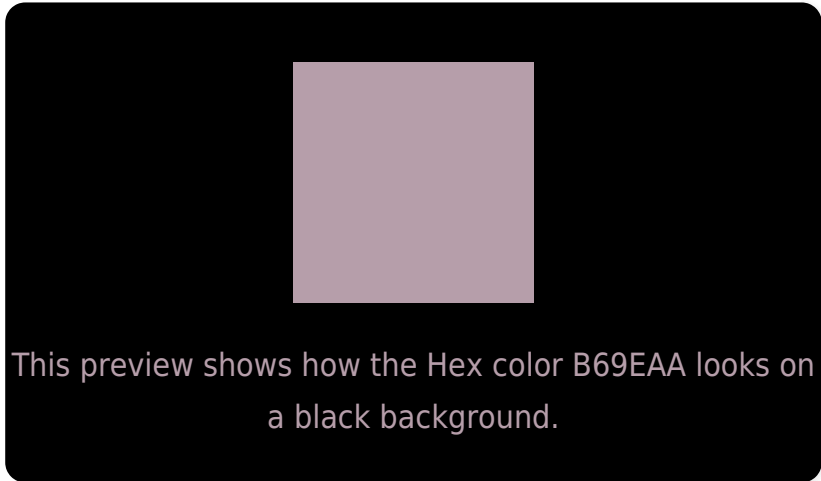
Large Text (above 18pt) WCAG AA × Fail

Any Text WCAG AA × Fail

Large Text (above 18pt) WCAG AAA × Fail

Any Text WCAG AAA × Fail

Black Background



Color Contrast Check

Large Text (above 18pt) WCAG AA ✓ Pass

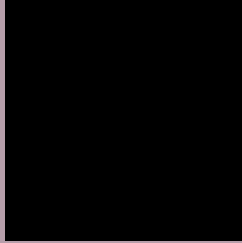
Any Text WCAG AA ✓ Pass

Large Text (above 18pt) WCAG AAA ✓ Pass

Any Text WCAG AAA ✓ Pass

If you want to check with other color combinations, try the [Color Contrast Checker](#).

Hex B69EAA Background



This preview shows how black text looks on a background with the Hex color B69EAA.



This preview shows how white text looks on a background with the Hex color B69EAA.

Color Blindness Simulation

Color vision deficiency is a very complex topic, and I could not describe the different causes any better than Wikipedia does, so if you want to learn more, you should check out their [article about color blindness](#).

Dichromacy



Original Color
B69EAA

Protanopia
A5A4AD

Deuteranopia
B29FAA



Tritanopia
B69EAA

Trichromacy



Original Color
B69EAA

Protanomaly
ABA2AC

Deuteranomaly
B39FAA

Tritanomaly
B69EAA

Monochromacy



Original Color
B69EAA

Achromatopsia
A7A7A7

Achromatomaly
ACA4A8

CSS Examples

Text

The CSS property to change the color of the text to Hex B69EAA is called "color". The color property can be set on classes, ids or directly on the HTML element.

This example shows how text in the color #B69EAA looks like.

```
.text, #text, p{  
    color:#B69EAA  
}
```

If you want to add a text shadow in that color use the text-shadow property, you can generate a text shadow directly with our [CSS Text Shadow Generator](#).

Here you see how black text with a 4 pixel #B69EAA colored shadow looks like.

```
.shadow{ text-shadow: 4px 4px 2px #B69EAA
}
```

Border

The CSS property to change the border of an element to Hex B69EAA is called "border". The border property can be set on classes, ids or directly on the HTML element.

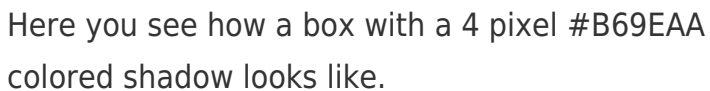
This example shows the color as border, it can be applied via the CSS property "border" or "border-color".

```
.border, #border, table{ border:4px solid
#B69EAA }
```

If only the border color should be changed use the property `border-color`.

```
.border{ border-color:#B69EAA }
```

If you want to add a box shadow in that color use:



Here you see how a box with a 4 pixel #B69EAA colored shadow looks like.

```
.boxshadow{ -moz-box-shadow:4px 4px 4px  
4px #B69EAA; -webkit-box-shadow:4px 4px  
4px 4px #B69EAA; box-shadow:4px 4px 4px  
4px #B69EAA }
```

Background

The CSS property to change the background color of an element to Hex B69EAA is called "background". The background property can be set on classes, ids or directly on the HTML element.

```
.background, #background, body{  
background:#B69EAA }
```

If only the background color should be changed can be used:

```
.background{ background-color:#B69EAA }
```

This example shows the color as background, it is applied via the CSS property "background".

To optimize and compress your CSS code, you can use our [online CSS compressor and optimizer](#) based on csstidy. If you want to create a linear or radial gradient as background or border, check our [CSS Gradient Generator](#).

Hey! You found this booklet interesting? Support Converting Colors with the new Membership Option!

The pro membership hides all ads, plus gives you double the colors in the color bucket, and more awesome pro features!

[Learn more, Memberships starting at \\$2.50/m!](#)

**Follow me
on Twitter!**

@ConvertingColor