

# Converting Colors

Hex(B6A0A5)

Have a look what the booklet for  
Hex(B6A0A5) contains.

<b>Hex(B6A0A5)</b> .....	3
<i><b>Conversions</b></i> .....	4
<i><b>Details</b></i> .....	6
<i><b>Harmonies</b></i> .....	11
<i><b>Previews</b></i> .....	23
<i><b>Color Blindness Simulation</b></i> .....	26
<i><b>CSS Examples</b></i> .....	29

# **Color**

**Hex(B6A0A5)**

# Conversions

## Conversions Part 1

Format	Color
Hex	B6A0A5
RGB	182, 160, 165
RGB Percent	71%, 63%, 65%
CMY	0.2863, 0.3725, 0.3529
CMYK	0.00, 0.12, 0.09, 0.29
HSL	346°, 13%, 67%
HSV	346°, 12%, 71%
XYZ	38.6537, 37.8033, 40.8568
YIQ	167.1480, 11.5070, 6.2190

# Conversions

## Conversions Part 2

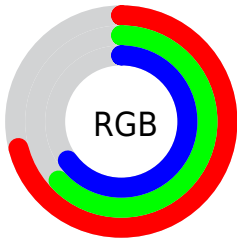
<b>Format</b>	<b>Color</b>
<b>RYB</b>	182, 160, 165
Decimal	11968677
CIELab	67.88, 8.91, 0.36
CIELCh	68, 8.918, 2.298
Yxy	37.8033, 0.3295, 0.3222
Android (android.graphics.Color)	4290158757 (0xFFB6A0A5)
YUV	167.1480, -1.0590, 13.0252
Hunter-Lab	61.4844, 4.6209, 3.6405

# Details

The Hex color **B6A0A5** is a light color, and the websafe version is hex **999999**. A complement of this color would be **A0B6B1**, and the grayscale version is **A7A7A7**.

A 20% lighter version of the original color is **EED7DC**, and **816D71** is the 20% darker color. If you saturate the color by 10%, you get **B68E97**, and if you desaturate by 10%, it is **B6B2B3**.

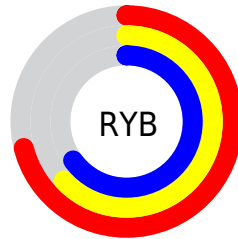
# Distribution



Red (71%)

Green (63%)

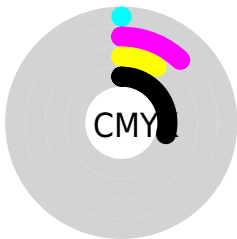
Blue (65%)



Red (71%)

Yellow (63%)

Blue (65%)

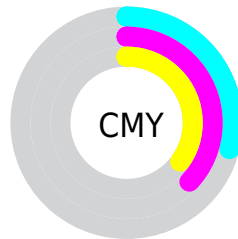


Cyan (0%)

Magenta (12%)

Yellow (9%)

Black (29%)



Cyan (29%)

Magenta (37%)

Yellow (35%)

# Brightness & Saturation Gradients

These gradients show how the Hex color B6A0A5 changes by changing the brightness by 10 percent. The first figure shows a shift by +10% for each color and the second figure -10%.

Similar to the brightness gradients but the following saturation gradients show a change of the Hex color B6A0A5 by changing the saturation by 10% instead.





B6A0A5



B6A0A5

FFFFFF



9B868B



EED7DC



816D71



FFF3F8



685459



503D41



38272B



231317



000000



B6A0A5



B6A0A5



B68E97



B6B2B3

 B67C89

 B6C4C1

 B6697B

 B6D7CF

 B6576D

 B6E9DD

 B6455F

 B6FBEB

 B63351

 B6FFF9

 B62143

 B6FFFF

 B60E34

 B60029

# Harmonies

## Analogous

The Analogous color harmony consists of three colors that are next to each other on the color wheel.



B1A1AD



B6A0A5



B7A19D

# Triad

The Triadic color harmony groups three colors that are evenly spaced from another and form a triangle on the color wheel.



B6A0A5



A2A898



96A8B3

# Complementary

The Complementary color scheme is a pair of colors which are on the opposite of each other on the color wheel.



B6A0A5



A0B6B1

# Split Complementary

Split-complementary colors differ from the complementary color scheme. The scheme consists of three colors, the original color and two neighbors of the complement color.



92AAAE



B6A0A5



99A99E

# Square

The Square scheme is like the rectangle color scheme, but the four colors are evenly spaced on the color wheel.



B6A0A5



ACA595



93AAA6



9EA6B5

# Rectangle

The Rectangle color scheme consists of four colors that form a rectangle on the color wheel.



B6A0A5



B5A299



93AAA6



94A9B2



# Sweetspot

The Sweet Spot groups the original color and five complimentary colors.



B6A0A5



EDE4E6



B1A0B6



787273



F7F7F7



787878



# Same Dimension

The Same Dimension uses a secret algorithm to generate beautiful new colors.



B6A0A5



EDCAD2



B6A6A0



5C5355



9C0023



1C0006



# Inverse Universe

The Inverse Universe completely reimagines the original color for something new.



B6A0A5



EDCAD2



A0B0B6



5C5355



9C0023

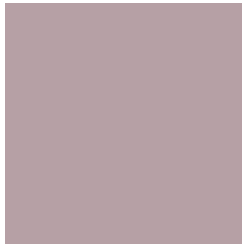


1C0006



# Previews

## White Background



This preview shows how the Hex color B6A0A5 looks on a white background.

## Color Contrast Check

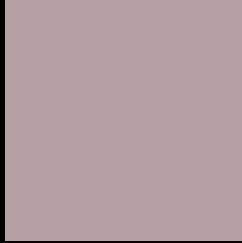
Large Text (above 18pt) WCAG AA × Fail

Any Text WCAG AA × Fail

Large Text (above 18pt) WCAG AAA × Fail

Any Text WCAG AAA × Fail

# Black Background



This preview shows how the Hex color B6A0A5 looks on a black background.

## Color Contrast Check

Large Text (above 18pt) WCAG AA ✓ Pass

Any Text WCAG AA ✓ Pass

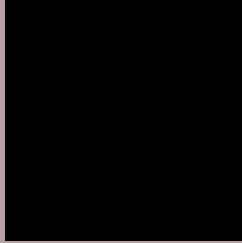
Large Text (above 18pt) WCAG AAA ✓ Pass

Any Text WCAG AAA ✓ Pass

If you want to check with other color combinations, try the [Color Contrast Checker](#).



## Hex B6A0A5 Background



This preview shows how black text looks on a background with the Hex color B6A0A5.

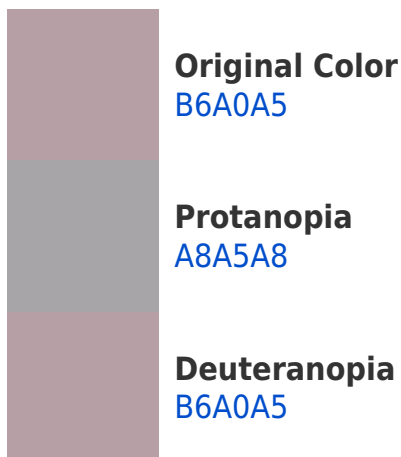


This preview shows how white text looks on a background with the Hex color B6A0A5.

# Color Blindness Simulation

Color vision deficiency is a very complex topic, and I could not describe the different causes any better than Wikipedia does, so if you want to learn more, you should check out their [article about color blindness](#).

## Dichromacy





**Tritanopia**  
B79FAB

# Trichromacy



**Original Color**  
B6A0A5

**Protanomaly**  
ADA3A7

**Deuteranomaly**  
B6A0A5

**Tritanomaly**  
B79FA9

# Monochromacy



**Original Color**  
B6A0A5

**Achromatopsia**  
A7A7A7

**Achromatomaly**  
ACA4A6

# CSS Examples

## Text

The CSS property to change the color of the text to Hex B6A0A5 is called "color". The color property can be set on classes, ids or directly on the HTML element.

This example shows how text in the color #B6A0A5 looks like.

```
.text, #text, p{  
    color:#B6A0A5  
}
```

If you want to add a text shadow in that color use the text-shadow property, you can generate a text shadow directly with our [CSS Text Shadow Generator](#).

Here you see how black text with a 4 pixel #B6A0A5 colored shadow looks like.

```
.shadow{ text-shadow: 4px 4px 2px #B6A0A5
}
```

## Border

The CSS property to change the border of an element to Hex B6A0A5 is called "border". The border property can be set on classes, ids or directly on the HTML element.

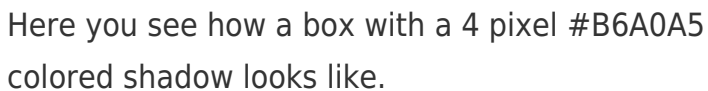
This example shows the color as border, it can be applied via the CSS property "border" or "border-color".

```
.border, #border, table{ border:4px solid
#B6A0A5 }
```

If only the border color should be changed use the property `border-color`.

```
.border{ border-color:#B6A0A5 }
```

If you want to add a box shadow in that color use:



Here you see how a box with a 4 pixel #B6A0A5 colored shadow looks like.

```
.boxshadow{ -moz-box-shadow:4px 4px 4px  
4px #B6A0A5; -webkit-box-shadow:4px 4px  
4px 4px #B6A0A5; box-shadow:4px 4px 4px  
4px #B6A0A5 }
```

# Background

The CSS property to change the background color of an element to Hex B6A0A5 is called "background". The background property can be set on classes, ids or directly on the HTML element.

```
.background, #background, body{  
background:#B6A0A5 }
```

If only the background color should be changed can be used:

```
.background{ background-color:#B6A0A5 }
```

This example shows the color as background, it is applied via the CSS property "background".

To optimize and compress your CSS code, you can use our [online CSS compressor and optimizer](#) based on csstidy. If you want to create a linear or radial gradient as background or border, check our [CSS Gradient Generator](#).



Hey! You found this booklet interesting? Support Converting Colors with the new Membership Option!

The pro membership hides all ads, plus gives you double the colors in the color bucket, and more awesome pro features!

**[Learn more, Memberships starting at \\$2.50/m!](#)**

**Follow me  
on Twitter!**

@ConvertingColor