

# Converting Colors

Hex(B6A3A0)

Have a look what the booklet for  
Hex(B6A3A0) contains.

<b>Hex(B6A3A0)</b> .....	3
<i><b>Conversions</b></i> .....	4
<i><b>Details</b></i> .....	6
<i><b>Harmonies</b></i> .....	11
<i><b>Previews</b></i> .....	23
<i><b>Color Blindness Simulation</b></i> .....	26
<i><b>CSS Examples</b></i> .....	29

# **Color**

**Hex(B6A3A0)**

# Conversions

## Conversions Part 1

Format	Color
Hex	B6A3A0
RGB	182, 163, 160
RGB Percent	71%, 64%, 63%
CMY	0.2863, 0.3608, 0.3725
CMYK	0.00, 0.10, 0.12, 0.29
HSL	8°, 13%, 67%
HSV	8°, 12%, 71%
XYZ	38.7338, 38.6775, 38.6817
YIQ	168.3390, 12.2870, 3.0950

# Conversions

## Conversions Part 2

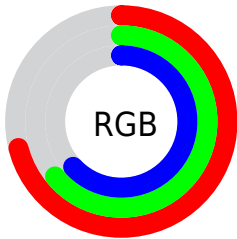
<b>Format</b>	<b>Color</b>
<b>RYB</b>	182, 163, 160
Decimal	11969440
CIELab	68.52, 6.40, 4.07
CIElCh	69, 7.585, 32.455
Yxy	38.6775, 0.3336, 0.3332
Android (android.graphics.Color)	4290159520 (0xFFB6A3A0)
YUV	168.3390, -4.1111, 11.9807
Hunter-Lab	62.1913, 2.3381, 6.6567

# Details

The Hex color **B6A3A0** is a light color, and the websafe version is hex **999999**. A complement of this color would be **A0B3B6**, and the grayscale version is **A8A8A8**.

A 20% lighter version of the original color is **EEDAD7**, and **816F6D** is the 20% darker color. If you saturate the color by 10%, you get **B6938E**, and if you desaturate by 10%, it is **B6B3B2**.

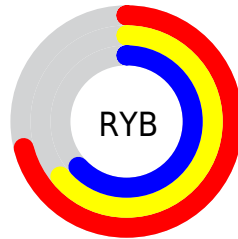
# Distribution



Red (71%)

Green (64%)

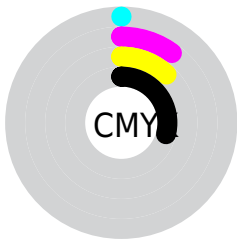
Blue (63%)



Red (71%)

Yellow (64%)

Blue (63%)

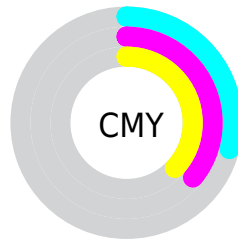


Cyan (0%)

Magenta (10%)

Yellow (12%)

Black (29%)



Cyan (29%)

Magenta (36%)

Yellow (37%)

# Brightness & Saturation Gradients

These gradients show how the Hex color B6A3A0 changes by changing the brightness by 10 percent. The first figure shows a shift by +10% for each color and the second figure -10%.

Similar to the brightness gradients but the following saturation gradients show a change of the Hex color B6A3A0 by changing the saturation by 10% instead.





B6A3A0



B6A3A0

FFFFFF



9B8986



EEDAD7



816F6D



FFF6F3



685754



4F403D



382A27



231513



000000



B6A3A0



B6A3A0



B6938E



B6B3B2

 B6847C

 B6C2C4

 B67469

 B6D2D7

 B66457

 B6E2E9

 B65445

 B6F2FB

 B64533

 B6FFFF

 B63521

 B6250E

 B61900

# Harmonies

## Analogous

The Analogous color harmony consists of three colors that are next to each other on the color wheel.



B5A3A7



B6A3A0



B3A59B

# Triad

The Triadic color harmony groups three colors that are evenly spaced from another and form a triangle on the color wheel.



B6A3A0



9DABA1



A1A7B5

# Complementary

The Complementary color scheme is a pair of colors which are on the opposite of each other on the color wheel.



B6A3A0



A0B3B6

# Split Complementary

Split-complementary colors differ from the complementary color scheme. The scheme consists of three colors, the original color and two neighbors of the complement color.



9AAAB3



B6A3A0



98ABA7

# Square

The Square scheme is like the rectangle color scheme, but the four colors are evenly spaced on the color wheel.



B6A3A0



A5A99B



96ABAE



A9A5B3

# Rectangle

The Rectangle color scheme consists of four colors that form a rectangle on the color wheel.



B6A3A0



AFA69A



96ABAE



9EA8B4



# Sweetspot

The Sweet Spot groups the original color and five complimentary colors.



B6A3A0



EDE5E4



B6A0B3



787372



F7F7F7



787878



# Same Dimension

The Same Dimension uses a secret algorithm to generate beautiful new colors.



B6A3A0



EDCECA



B6AEA0



5C5453



9C1500



1C0400



# Inverse Universe

The Inverse Universe completely reimagines the original color for something new.



A0B3B6



CAE8ED



A0A8B6



535B5C



00869C

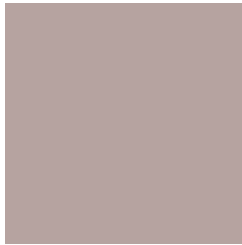


00181C



# Previews

## White Background



This preview shows how the Hex color B6A3A0 looks on a white background.

## Color Contrast Check

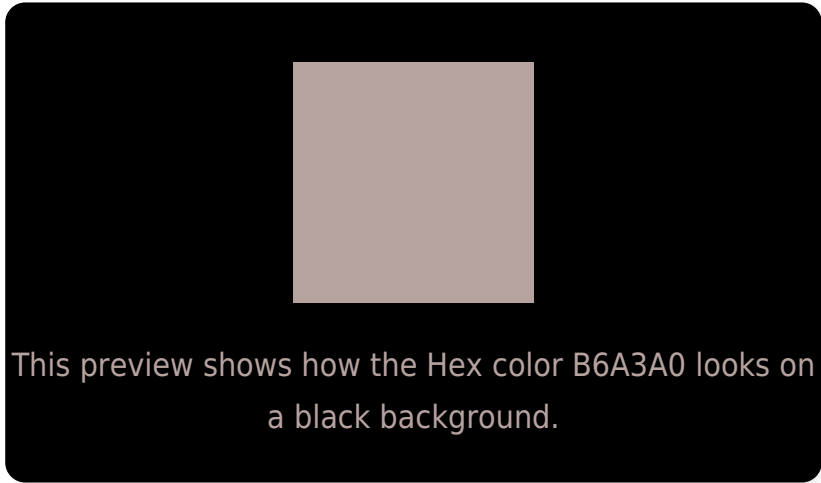
Large Text (above 18pt) WCAG AA × Fail

Any Text WCAG AA × Fail

Large Text (above 18pt) WCAG AAA × Fail

Any Text WCAG AAA × Fail

# Black Background



## Color Contrast Check

Large Text (above 18pt) WCAG AA ✓ Pass

Any Text WCAG AA ✓ Pass

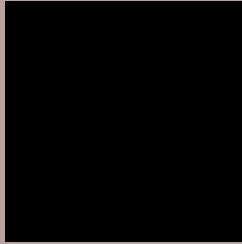
Large Text (above 18pt) WCAG AAA ✓ Pass

Any Text WCAG AAA ✓ Pass

If you want to check with other color combinations, try the [Color Contrast Checker](#).



## Hex B6A3A0 Background



This preview shows how black text looks on a background with the Hex color B6A3A0.

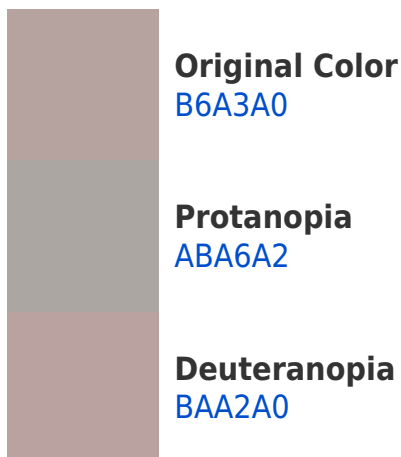


This preview shows how white text looks on a background with the Hex color B6A3A0.

# Color Blindness Simulation

Color vision deficiency is a very complex topic, and I could not describe the different causes any better than Wikipedia does, so if you want to learn more, you should check out their [article about color blindness](#).

## Dichromacy





**Tritanopia**  
B8A1AE

# Trichromacy



**Original Color**  
B6A3A0

**Protanomaly**  
AFA5A1

**Deuteranomaly**  
B9A2A0

**Tritanomaly**  
B7A2A9

# Monochromacy



**Original Color**  
B6A3A0

**Achromatopsia**  
A8A8A8

**Achromatomaly**  
ADA6A5

# CSS Examples

## Text

The CSS property to change the color of the text to Hex B6A3A0 is called "color". The color property can be set on classes, ids or directly on the HTML element.

This example shows how text in the color #B6A3A0 looks like.

```
.text, #text, p{  
    color:#B6A3A0  
}
```

If you want to add a text shadow in that color use the text-shadow property, you can generate a text shadow directly with our [CSS Text Shadow Generator](#).

Here you see how black text with a 4 pixel #B6A3A0 colored shadow looks like.

```
.shadow{ text-shadow: 4px 4px 2px #B6A3A0
}
```

## Border

The CSS property to change the border of an element to Hex B6A3A0 is called "border". The border property can be set on classes, ids or directly on the HTML element.

This example shows the color as border, it can be applied via the CSS property "border" or "border-color".

```
.border, #border, table{ border:4px solid
#B6A3A0 }
```

If only the border color should be changed use the property `border-color`.

```
.border{ border-color:#B6A3A0 }
```

If you want to add a box shadow in that color use:

Here you see how a box with a 4 pixel #B6A3A0 colored shadow looks like.

```
.boxshadow{ -moz-box-shadow:4px 4px 4px  
4px #B6A3A0; -webkit-box-shadow:4px 4px  
4px 4px #B6A3A0; box-shadow:4px 4px 4px  
4px #B6A3A0 }
```

# Background

The CSS property to change the background color of an element to Hex B6A3A0 is called "background". The background property can be set on classes, ids or directly on the HTML element.

```
.background, #background, body{  
background:#B6A3A0 }
```

If only the background color should be changed can be used:

```
.background{ background-color:#B6A3A0 }
```

This example shows the color as background, it is applied via the CSS property "background".

To optimize and compress your CSS code, you can use our [online CSS compressor and optimizer](#) based on csstidy. If you want to create a linear or radial gradient as background or border, check our [CSS Gradient Generator](#).



Hey! You found this booklet interesting? Support Converting Colors with the new Membership Option!

The pro membership hides all ads, plus gives you double the colors in the color bucket, and more awesome pro features!

**[Learn more, Memberships starting at \\$2.50/m!](#)**

**Follow me  
on Twitter!**

@ConvertingColor