

Converting Colors

Hex(B7656B)

Have a look what the booklet for
Hex(B7656B) contains.

Hex(B7656B)	3
<i>Conversions</i>	4
<i>Details</i>	6
<i>Harmonies</i>	11
<i>Previews</i>	23
<i>Color Blindness Simulation</i>	26
<i>CSS Examples</i>	29

Color

Hex(B7656B)

Conversions

Conversions Part 1

Format	Color
Hex	B7656B
RGB	183, 101, 107
RGB Percent	72%, 40%, 42%
CMY	0.2824, 0.6039, 0.5804
CMYK	0.00, 0.45, 0.42, 0.28
HSL	356°, 36%, 56%
HSV	356°, 45%, 72%
XYZ	26.8360, 20.4362, 16.4401
YIQ	126.2020, 46.9460, 19.2500

Conversions

Conversions Part 2

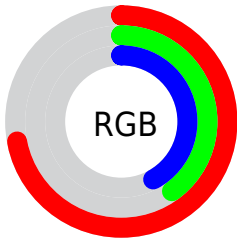
Format	Color
R_{YB}	183, 101, 107
Decimal	12019051
CIE Lab	52.33, 33.50, 11.31
CIE LCh	52, 35.361, 18.647
Yxy	20.4362, 0.4212, 0.3208
Android (android.graphics.Color)	4290209131 (0xFFB7656B)
YUV	126.2020, -9.4666, 49.8118
Hunter-Lab	45.2064, 26.8521, 10.0826

Details

The Hex color **B7656B** is a dark color, and the websafe version is hex **CC6666**. A complement of this color would be **65B7B1**, and the grayscale version is **7E7E7E**.

A 20% lighter version of the original color is **F1999E**, and **7F333C** is the 20% darker color. If you saturate the color by 10%, you get **B7535A**, and if you desaturate by 10%, it is **B7777C**.

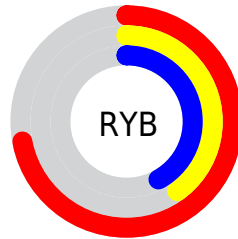
Distribution



Red (72%)

Green (40%)

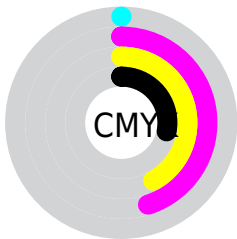
Blue (42%)



Red (72%)

Yellow (40%)

Blue (42%)

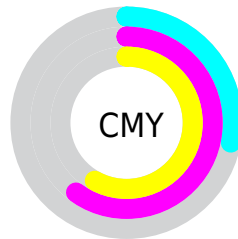


Cyan (0%)

Magenta (45%)

Yellow (42%)

Black (28%)



Cyan (28%)

Magenta (60%)

Yellow (58%)

Brightness & Saturation Gradients

These gradients show how the Hex color B7656B changes by changing the brightness by 10 percent. The first figure shows a shift by +10% for each color and the second figure -10%.

Similar to the brightness gradients but the following saturation gradients show a change of the Hex color B7656B by changing the saturation by 10% instead.

 B7656B

 B7656B

FFFFFF

 9B4C53

 F1999E

 7F333C

 FF5B9

 641B26

 FFD1D5

 490012

 FFEDF1

 310000

 010000

 000000

 B7656B

 B7656B

 B7535A

 B7777C

 B74049

 B78A8D

 B72E38

 B79C9E

 B71C27

 B7AEAF

 B70916

 B7C1C0

 B7000D

 B7D3D1

 B7E5E2

 B7F7F3

 B7FFFF

Harmonies

Analogous

The Analogous color harmony consists of three colors that are next to each other on the color wheel.



B0668A



B7656B



AE6C51

Triad

The Triadic color harmony groups three colors that are evenly spaced from another and form a triangle on the color wheel.



B7656B



5A8854



3183B8

Complementary

The Complementary color scheme is a pair of colors which are on the opposite of each other on the color wheel.



B7656B



65B7B1

Split Complementary

Split-complementary colors differ from the complementary color scheme. The scheme consists of three colors, the original color and two neighbors of the complement color.



008AAA



B7656B



2D8C70

Square

The Square scheme is like the rectangle color scheme, but the four colors are evenly spaced on the color wheel.



B7656B



7D8142



008D8F



6E79B6

Rectangle

The Rectangle color scheme consists of four colors that form a rectangle on the color wheel.



B7656B



A27344



008D8F



0D86B5

Sweetspot

The Sweet Spot groups the original color and five complimentary colors.



B7656B



EDCED1



B065B7



786566



F7F7F7



787878

Same Dimension

The Same Dimension uses a secret algorithm to generate beautiful new colors.



B7656B



ED6D76



B78765



5C5353



9C000B



1C0002

Inverse Universe

The Inverse Universe completely reimagines the original color for something new.



B7656B



ED6D76



6595B7



5C5353



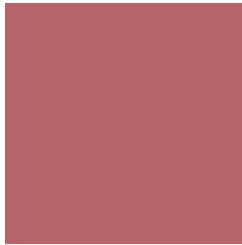
9C000B



1C0002

Previews

White Background



This preview shows how the Hex color B7656B looks on a white background.

Color Contrast Check

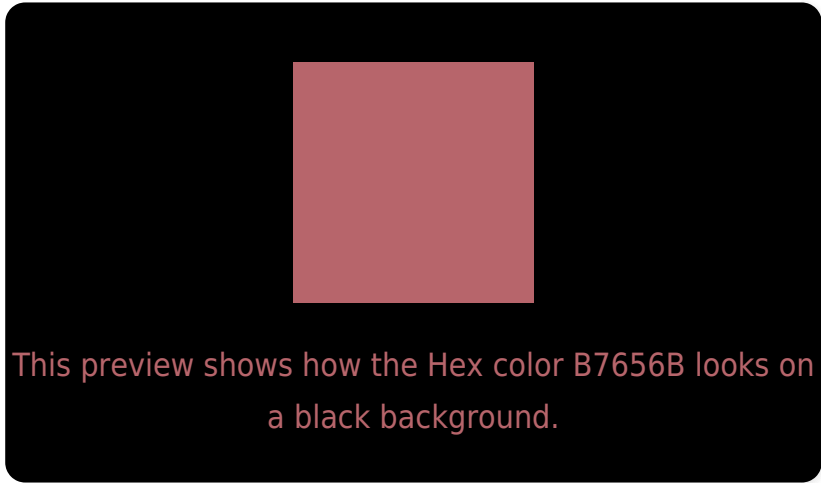
Large Text (above 18pt) WCAG AA ✓ Pass

Any Text WCAG AA × Fail

Large Text (above 18pt) WCAG AAA × Fail

Any Text WCAG AAA × Fail

Black Background



Color Contrast Check

Large Text (above 18pt) WCAG AA ✓ Pass

Any Text WCAG AA ✓ Pass

Large Text (above 18pt) WCAG AAA ✓ Pass

Any Text WCAG AAA × Fail

If you want to check with other color combinations, try the [Color Contrast Checker](#).

Hex B7656B Background



This preview shows how black text looks on a background with the Hex color B7656B.

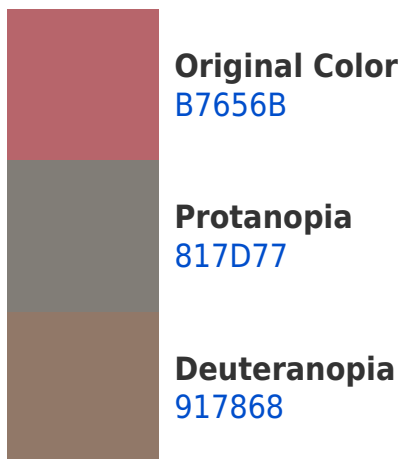



This preview shows how white text looks on a background with the Hex color B7656B.

Color Blindness Simulation

Color vision deficiency is a very complex topic, and I could not describe the different causes any better than Wikipedia does, so if you want to learn more, you should check out their [article about color blindness](#).

Dichromacy





Tritanopia
B7656C

Trichromacy



Original Color
B7656B

Protanomaly
957473

Deuteranomaly
9F7169

Tritanomaly
B7656C

Monochromacy



Original Color
B7656B

Achromatopsia
7E7E7E

Achromatomaly
937577

CSS Examples

Text

The CSS property to change the color of the text to Hex B7656B is called "color". The color property can be set on classes, ids or directly on the HTML element.

This example shows how text in the color #B7656B looks like.

```
.text, #text, p{  
    color:#B7656B  
}
```

If you want to add a text shadow in that color use the text-shadow property, you can generate a text shadow directly with our [CSS Text Shadow Generator](#).

Here you see how black text with a 4 pixel #B7656B colored shadow looks like.

```
.shadow{ text-shadow: 4px 4px 2px #B7656B
}
```

Border

The CSS property to change the border of an element to Hex B7656B is called "border". The border property can be set on classes, ids or directly on the HTML element.

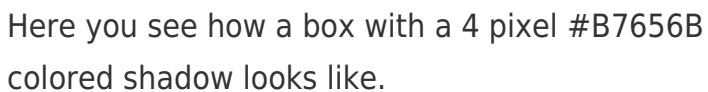
This example shows the color as border, it can be applied via the CSS property "border" or "border-color".

```
.border, #border, table{ border:4px solid
#B7656B }
```

If only the border color should be changed use the property `border-color`.

```
.border{ border-color:#B7656B }
```

If you want to add a box shadow in that color use:



Here you see how a box with a 4 pixel #B7656B colored shadow looks like.

```
.boxshadow{ -moz-box-shadow:4px 4px 4px  
4px #B7656B; -webkit-box-shadow:4px 4px  
4px 4px #B7656B; box-shadow:4px 4px 4px  
4px #B7656B }
```

Background

The CSS property to change the background color of an element to Hex B7656B is called "background". The background property can be set on classes, ids or directly on the HTML element.

```
.background, #background, body{  
background:#B7656B }
```

If only the background color should be changed can be used:

```
.background{ background-color:#B7656B }
```

This example shows the color as background, it is applied via the CSS property "background".

To optimize and compress your CSS code, you can use our [online CSS compressor and optimizer](#) based on csstidy. If you want to create a linear or radial gradient as background or border, check our [CSS Gradient Generator](#).

Hey! You found this booklet interesting? Support Converting Colors with the new Membership Option!

The pro membership hides all ads, plus gives you double the colors in the color bucket, and more awesome pro features!

[Learn more, Memberships starting at \\$2.50/m!](#)

**Follow me
on Twitter!**

@ConvertingColor