

Converting Colors

Hex(B76762)

Have a look what the booklet for
Hex(B76762) contains.

Hex(B76762)	3
<i>Conversions</i>	4
<i>Details</i>	6
<i>Harmonies</i>	11
<i>Previews</i>	23
<i>Color Blindness Simulation</i>	26
<i>CSS Examples</i>	29

Color

Hex(B76762)

Conversions

Conversions Part 1

Format	Color
Hex	B76762
RGB	183, 103, 98
RGB Percent	72%, 40%, 38%
CMY	0.2824, 0.5961, 0.6157
CMYK	0.00, 0.44, 0.46, 0.28
HSL	4°, 37%, 55%
HSV	4°, 46%, 72%
XYZ	26.5833, 20.6496, 14.1400
YIQ	126.3500, 49.2850, 15.4050

Conversions

Conversions Part 2

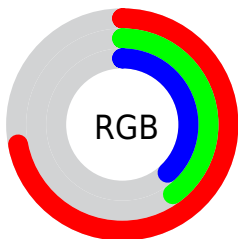
Format	Color
R_{YB}	183, 103, 98
Decimal	12019554
CIE _{Lab}	52.56, 31.45, 16.93
CIE _{LCh}	53, 35.719, 28.298
Yxy	20.6496, 0.4331, 0.3365
Android (android.graphics.Color)	4290209634 (0xFFB76762)
YUV	126.3500, -13.9765, 49.6821
Hunter-Lab	45.4418, 24.8985, 13.3603

Details

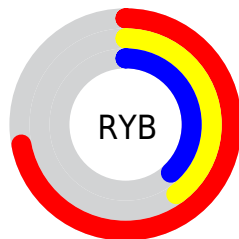
The Hex color **B76762** is a dark color, and the websafe version is hex **CC6666**. A complement of this color would be **62B2B7**, and the grayscale version is **7E7E7E**.

A 20% lighter version of the original color is **F29B95**, and **7F3634** is the 20% darker color. If you saturate the color by 10%, you get **B75650**, and if you desaturate by 10%, it is **B77874**.

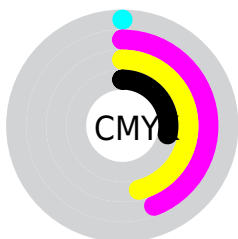
Distribution



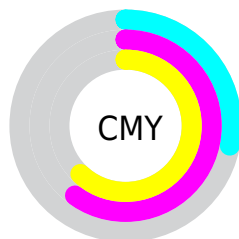
- Red (72%)
- Green (40%)
- Blue (38%)



- Red (72%)
- Yellow (40%)
- Blue (38%)



- Cyan (0%)
- Magenta (44%)
- Yellow (46%)
- Black (28%)



- Cyan (28%)
- Magenta (60%)
- Yellow (62%)

Brightness & Saturation Gradients

These gradients show how the Hex color B76762 changes by changing the brightness by 10 percent. The first figure shows a shift by +10% for each color and the second figure -10%.

Similar to the brightness gradients but the following saturation gradients show a change of the Hex color B76762 by changing the saturation by 10% instead.

 B76762

 B76762

FFFFFF

 9B4E4A

 F29B95

 7F3634

 FF7AF

 631E1E

 FFD3CB

 490307

 FFEFE7

 300000

 000000

 B76762

 B76762

 B75650

 B77874

 B7453D

 B78987

 B7332B

 B79B99

 B72219

 B7ACAB

 B71107

 B7BDBE

 B70B00

 B7CED0

 B7E0E2

 B7F1F4

 B7FFFF

Harmonies

Analogous

The Analogous color harmony consists of three colors that are next to each other on the color wheel.



B56580



B76762



AA704A

Triad

The Triadic color harmony groups three colors that are evenly spaced from another and form a triangle on the color wheel.



B76762



4D8A5C



4881BA

Complementary

The Complementary color scheme is a pair of colors which are on the opposite of each other on the color wheel.



B76762



62B2B7

Split Complementary

Split-complementary colors differ from the complementary color scheme. The scheme consists of three colors, the original color and two neighbors of the complement color.



0089B1



B76762



118D7B

Square

The Square scheme is like the rectangle color scheme, but the four colors are evenly spaced on the color wheel.



B76762



738446



008D99



7D76B3

Rectangle

The Rectangle color scheme consists of four colors that form a rectangle on the color wheel.



B76762



9B7741



008D99



3084B9

Sweetspot

The Sweet Spot groups the original color and five complimentary colors.



B76762



EDCECC



B762B3



786563



F7F7F7



787878

Same Dimension

The Same Dimension uses a secret algorithm to generate beautiful new colors.



B76762



ED7068



B79162



5C5353



9C0900



1C0200

Inverse Universe

The Inverse Universe completely reimagines the original color for something new.



62B2B7



68E5ED



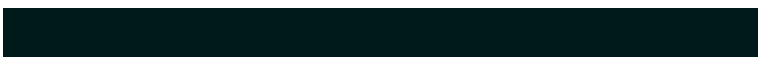
6288B7



535B5C



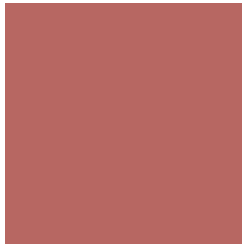
00929C



001A1C

Previews

White Background



This preview shows how the Hex color B76762 looks on a white background.

Color Contrast Check

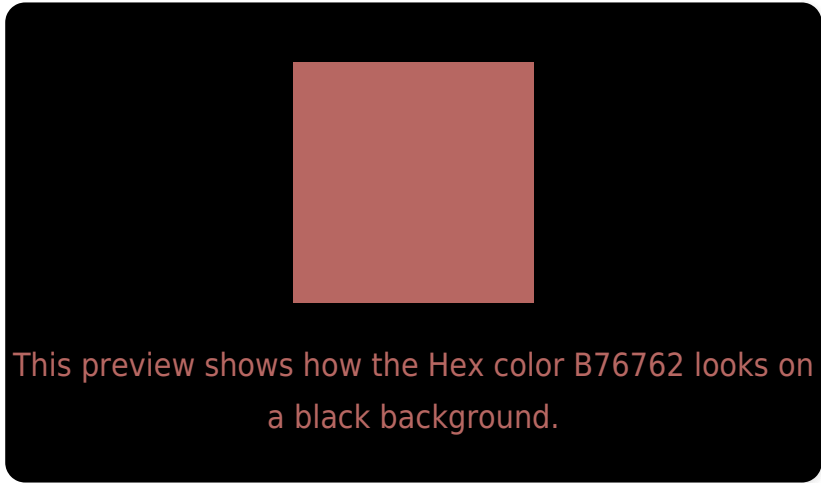
Large Text (above 18pt) WCAG AA ✓ Pass

Any Text WCAG AA × Fail

Large Text (above 18pt) WCAG AAA × Fail

Any Text WCAG AAA × Fail

Black Background



Color Contrast Check

Large Text (above 18pt) WCAG AA ✓ Pass

Any Text WCAG AA ✓ Pass

Large Text (above 18pt) WCAG AAA ✓ Pass

Any Text WCAG AAA × Fail

If you want to check with other color combinations, try the [Color Contrast Checker](#).

Hex B76762 Background



This preview shows how black text looks on a background with the Hex color B76762.



This preview shows how white text looks on a background with the Hex color B76762.

Color Blindness Simulation

Color vision deficiency is a very complex topic, and I could not describe the different causes any better than Wikipedia does, so if you want to learn more, you should check out their [article about color blindness](#).


Dichromacy



Original Color
B76762

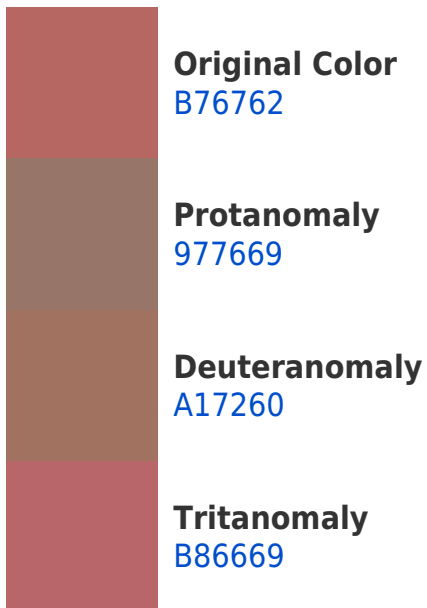
Protanopia
847E6D

Deuteranopia
94795F



Tritanopia
B8656D

Trichromacy



Monochromacy



CSS Examples

Text

The CSS property to change the color of the text to Hex B76762 is called "color". The color property can be set on classes, ids or directly on the HTML element.

This example shows how text in the color #B76762 looks like.

```
.text, #text, p{  
    color:#B76762  
}
```

If you want to add a text shadow in that color use the text-shadow property, you can generate a text shadow directly with our [CSS Text Shadow Generator](#).

Here you see how black text with a 4 pixel #B76762 colored shadow looks like.

```
.shadow{ text-shadow: 4px 4px 2px #B76762
}
```

Border

The CSS property to change the border of an element to Hex B76762 is called "border". The border property can be set on classes, ids or directly on the HTML element.

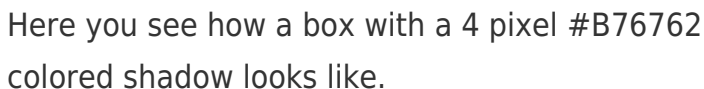
This example shows the color as border, it can be applied via the CSS property "border" or "border-color".

```
.border, #border, table{ border:4px solid
#B76762 }
```

If only the border color should be changed use the property `border-color`.

```
.border{ border-color:#B76762 }
```

If you want to add a box shadow in that color use:



Here you see how a box with a 4 pixel #B76762 colored shadow looks like.

```
.boxshadow{ -moz-box-shadow:4px 4px 4px  
4px #B76762; -webkit-box-shadow:4px 4px  
4px 4px #B76762; box-shadow:4px 4px 4px  
4px #B76762 }
```

Background

The CSS property to change the background color of an element to Hex B76762 is called "background". The background property can be set on classes, ids or directly on the HTML element.

```
.background, #background, body{  
background:#B76762 }
```

If only the background color should be changed can be used:

```
.background{ background-color:#B76762 }
```

This example shows the color as background, it is applied via the CSS property "background".

To optimize and compress your CSS code, you can use our [online CSS compressor and optimizer](#) based on csstidy. If you want to create a linear or radial gradient as background or border, check our [CSS Gradient Generator](#).

Hey! You found this booklet interesting? Support Converting Colors with the new Membership Option!

The pro membership hides all ads, plus gives you double the colors in the color bucket, and more awesome pro features!

[Learn more, Memberships starting at \\$2.50/m!](#)

**Follow me
on Twitter!**

@ConvertingColor