

# Converting Colors

Hex(B76A67)

Have a look what the booklet for  
Hex(B76A67) contains.

<b>Hex(B76A67)</b> .....	3
<b><i>Conversions</i></b> .....	4
<b><i>Details</i></b> .....	6
<b><i>Harmonies</i></b> .....	11
<b><i>Previews</i></b> .....	23
<b><i>Color Blindness Simulation</i></b> .....	26
<b><i>CSS Examples</i></b> .....	29

**Color**

**Hex(B76A67)**

# Conversions

## Conversions Part 1

<b>Format</b>	<b>Color</b>
Hex	<a href="#">B76A67</a>
RGB	<a href="#">183, 106, 103</a>
RGB Percent	<a href="#">72%, 42%, 40%</a>
CMY	<a href="#">0.2824, 0.5843, 0.5961</a>
CMYK	<a href="#">0.00, 0.42, 0.44, 0.28</a>
HSL	<a href="#">2°, 36%, 56%</a>
HSV	<a href="#">2°, 44%, 72%</a>
XYZ	<a href="#">27.1307, 21.3546, 15.5239</a>
YIQ	<a href="#">128.6810, 46.8550, 15.3910</a>

# Conversions

## Conversions Part 2

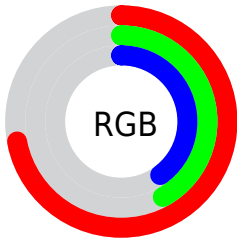
<b>Format</b>	<b>Color</b>
<a href="#">RYB</a>	<a href="#">183, 106, 103</a>
Decimal	<a href="#">12020327</a>
CIELab	<a href="#">53.34, 30.35, 15.06</a>
CIElCh	<a href="#">53, 33.885, 26.391</a>
Yxy	<a href="#">21.3546, 0.4239, 0.3336</a>
Android (android.graphics.Color)	<a href="#">4290210407</a> ( <a href="#">0xFFB76A67</a> )
YUV	<a href="#">128.6810, -12.6607, 47.6378</a>
Hunter-Lab	<a href="#">46.2111, 23.9285, 12.4302</a>

# Details

The Hex color **B76A67** is a dark color, and the websafe version is hex **CC6666**. A complement of this color would be **67B4B7**, and the grayscale version is **818181**.

A 20% lighter version of the original color is **F19E9A**, and **7F3938** is the 20% darker color. If you saturate the color by 10%, you get **B75855**, and if you desaturate by 10%, it is **B77C79**.

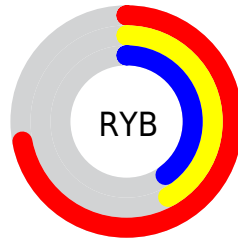
# Distribution



Red (72%)

Green (42%)

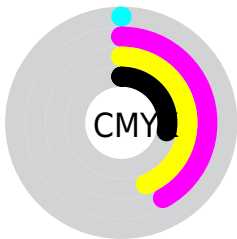
Blue (40%)



Red (72%)

Yellow (42%)

Blue (40%)

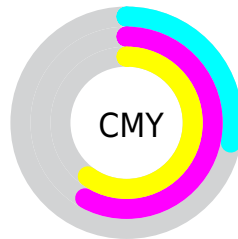


Cyan (0%)

Magenta (42%)

Yellow (44%)

Black (28%)



Cyan (28%)

Magenta (58%)

Yellow (60%)

# Brightness & Saturation Gradients

These gradients show how the Hex color B76A67 changes by changing the brightness by 10 percent. The first figure shows a shift by +10% for each color and the second figure -10%.

Similar to the brightness gradients but the following saturation gradients show a change of the Hex color B76A67 by changing the saturation by 10% instead.





B76A67



B76A67

FFFFFF



9B514F



F19E9A



7F3938



FFBAB5



642123



FFD6D0



49070D



FFF2ED



310000



040000



000000



B76A67



B76A67



B75855



B77C79

 B74742

 B78D8C

 B73530

 B79F9E

 B7241E

 B7B0B0

 B7120B

 B7C2C3

 B70700

 B7D4D5

 B7E5E7

 B7F7F9

 B7FFFF

# Harmonies

## Analogous

The Analogous color harmony consists of three colors that are next to each other on the color wheel.



B46884



B76A67



AB7250

# Triad

The Triadic color harmony groups three colors that are evenly spaced from another and form a triangle on the color wheel.



B76A67



558C5E



4B83B9

# Complementary

The Complementary color scheme is a pair of colors which are on the opposite of each other on the color wheel.



B76A67



67B4B7

# Split Complementary

Split-complementary colors differ from the complementary color scheme. The scheme consists of three colors, the original color and two neighbors of the complement color.



008BAF



B76A67



278E7B

# Square

The Square scheme is like the rectangle color scheme, but the four colors are evenly spaced on the color wheel.



B76A67



78854A



008E98



7D79B4

# Rectangle

The Rectangle color scheme consists of four colors that form a rectangle on the color wheel.



B76A67



9D7947



008E98



3786B8



# Sweetspot

The Sweet Spot groups the original color and five complimentary colors.



B76A67



EDCFCE



B767B4



786565



F7F7F7



787878



# Same Dimension

The Same Dimension uses a secret algorithm to generate beautiful new colors.



B76A67



ED7672



B79267



5C5353



9C0600



1C0100



# Inverse Universe

The Inverse Universe completely reimagines the original color for something new.



67B4B7



72E9ED



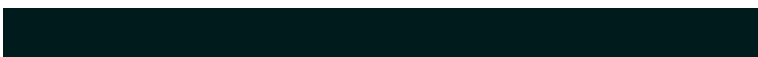
678CB7



535B5C



00969C

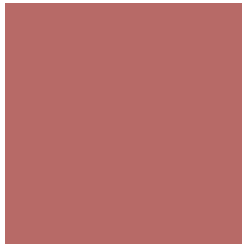


001B1C



# Previews

## White Background



This preview shows how the Hex color B76A67 looks on a white background.

## Color Contrast Check

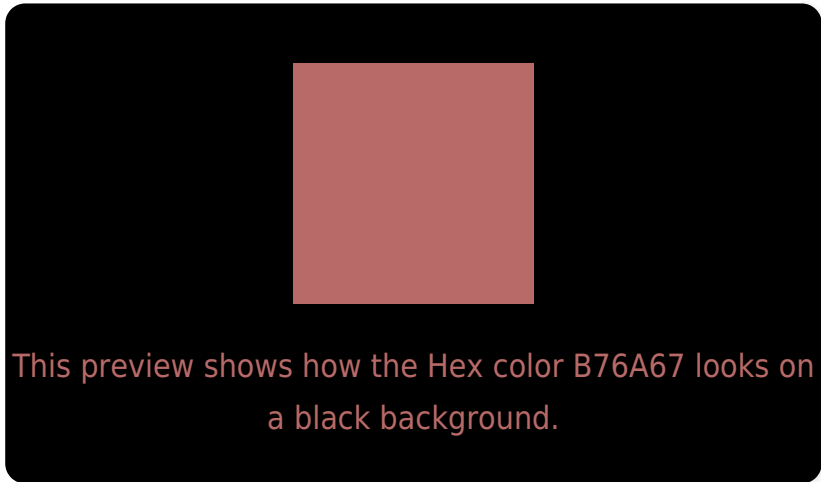
Large Text (above 18pt) WCAG AA ✓ Pass

Any Text WCAG AA × Fail

Large Text (above 18pt) WCAG AAA × Fail

Any Text WCAG AAA × Fail

# Black Background



## Color Contrast Check

Large Text (above 18pt) WCAG AA ✓ Pass

Any Text WCAG AA ✓ Pass

Large Text (above 18pt) WCAG AAA ✓ Pass

Any Text WCAG AAA × Fail

If you want to check with other color combinations, try the [Color Contrast Checker](#).



## Hex B76A67 Background



This preview shows how black text looks on a background with the Hex color B76A67.



This preview shows how white text looks on a background with the Hex color B76A67.

# Color Blindness Simulation

Color vision deficiency is a very complex topic, and I could not describe the different causes any better than Wikipedia does, so if you want to learn more, you should check out their [article about color blindness](#).

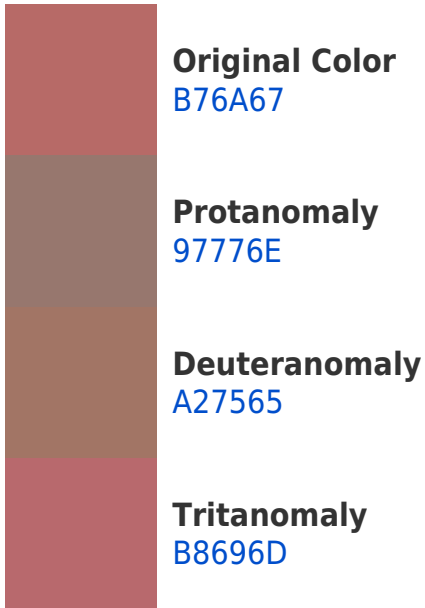
## Dichromacy





**Tritanopia**  
B86970

# Trichromacy



# Monochromacy



# CSS Examples

## Text

The CSS property to change the color of the text to Hex B76A67 is called "color". The color property can be set on classes, ids or directly on the HTML element.

This example shows how text in the color #B76A67 looks like.

```
.text, #text, p{  
    color:#B76A67  
}
```

If you want to add a text shadow in that color use the text-shadow property, you can generate a text shadow directly with our [CSS Text Shadow Generator](#).

Here you see how black text with a 4 pixel #B76A67 colored shadow looks like.

```
.shadow{ text-shadow: 4px 4px 2px #B76A67
}
```

## Border

The CSS property to change the border of an element to Hex B76A67 is called "border". The border property can be set on classes, ids or directly on the HTML element.

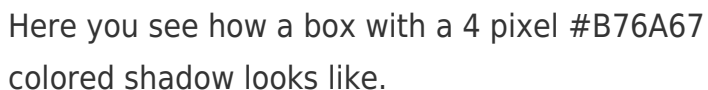
This example shows the color as border, it can be applied via the CSS property "border" or "border-color".

```
.border, #border, table{ border:4px solid
#B76A67 }
```

If only the border color should be changed use the property `border-color`.

```
.border{ border-color:#B76A67 }
```

If you want to add a box shadow in that color use:



Here you see how a box with a 4 pixel #B76A67 colored shadow looks like.

```
.boxshadow{ -moz-box-shadow:4px 4px 4px  
4px #B76A67; -webkit-box-shadow:4px 4px  
4px 4px #B76A67; box-shadow:4px 4px 4px  
4px #B76A67 }
```

# Background

The CSS property to change the background color of an element to Hex B76A67 is called "background". The background property can be set on classes, ids or directly on the HTML element.

```
.background, #background, body{  
background:#B76A67 }
```

If only the background color should be changed can be used:

```
.background{ background-color:#B76A67 }
```

This example shows the color as background, it is applied via the CSS property "background".

To optimize and compress your CSS code, you can use our [online CSS compressor and optimizer](#) based on csstidy. If you want to create a linear or radial gradient as background or border, check our [CSS Gradient Generator](#).



Hey! You found this booklet interesting? Support Converting Colors with the new Membership Option!

The pro membership hides all ads, plus gives you double the colors in the color bucket, and more awesome pro features!

**[Learn more, Memberships starting at \\$2.50/m!](#)**

**Follow me  
on Twitter!**

@ConvertingColor