

# Converting Colors

Hex(B7776F)

Have a look what the booklet for  
Hex(B7776F) contains.

<b>Hex(B7776F)</b> .....	3
<b><i>Conversions</i></b> .....	4
<b><i>Details</i></b> .....	6
<b><i>Harmonies</i></b> .....	11
<b><i>Previews</i></b> .....	23
<b><i>Color Blindness Simulation</i></b> .....	26
<b><i>CSS Examples</i></b> .....	29

**Color**

**Hex(B7776F)**

# Conversions

## Conversions Part 1

<b>Format</b>	<b>Color</b>
Hex	<a href="#">B7776F</a>
RGB	<a href="#">183, 119, 111</a>
RGB Percent	<a href="#">72%, 47%, 44%</a>
CMY	<a href="#">0.2824, 0.5333, 0.5647</a>
CMYK	<a href="#">0.00, 0.35, 0.39, 0.28</a>
HSL	<a href="#">7°, 33%, 58%</a>
HSV	<a href="#">7°, 39%, 72%</a>
XYZ	<a href="#">28.9945, 24.4086, 18.2221</a>
YIQ	<a href="#">137.2240, 40.7120, 11.0800</a>

# Conversions

## Conversions Part 2

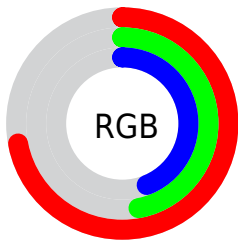
<b>Format</b>	<b>Color</b>
<b>R<sub>YB</sub></b>	183, 120, 111
Decimal	12023663
CIE <sub>Lab</sub>	56.49, 24.11, 14.78
CIE <sub>LCh</sub>	56, 28.276, 31.502
Yxy	24.4086, 0.4048, 0.3408
Android (android.graphics.Color)	4290213743 (0xFFB7776F)
YUV	137.2240, -12.9284, 40.1456
Hunter-Lab	49.4051, 18.2979, 12.7156

# Details

The Hex color **B7776F** is a dark color, and the websafe version is hex **996666**. A complement of this color would be **6FAFB7**, and the grayscale version is **898989**.

A 20% lighter version of the original color is **F1ACA3**, and **80463F** is the 20% darker color. If you saturate the color by 10%, you get **B7675D**, and if you desaturate by 10%, it is **B78781**.

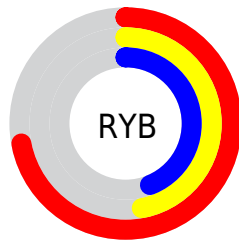
# Distribution



Red (72%)

Green (47%)

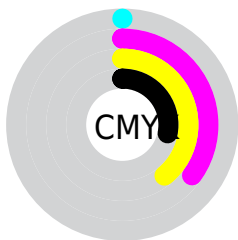
Blue (44%)



Red (72%)

Yellow (47%)

Blue (44%)

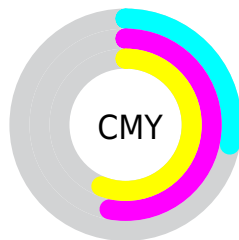


Cyan (0%)

Magenta (35%)

Yellow (39%)

Black (28%)



Cyan (28%)

Magenta (53%)

Yellow (56%)

# Brightness & Saturation Gradients

These gradients show how the Hex color B7776F changes by changing the brightness by 10 percent. The first figure shows a shift by +10% for each color and the second figure -10%.

Similar to the brightness gradients but the following saturation gradients show a change of the Hex color B7776F by changing the saturation by 10% instead.



 B7776F

 B7776F

FFFFFF

 9B5E57

 F1ACA3

 80463F

 FFC7BE

 652E29

 FFE3D9

 4B1815

 FFFFF6

 330100

 140000

 000000

 B7776F

 B7776F

 B7675D

 B78781

 B7564A

 B79894

 B74638

 B7A8A6

 B73626

 B7B8B8

 B72614

 B7C8CB

 B71501

 B7D9DD

 B71400

 B7E9EF

 B7F9FF

 B7FFFF

# Harmonies

## Analogous

The Analogous color harmony consists of three colors that are next to each other on the color wheel.



B67587



B7776F



AC7E5D

# Triad

The Triadic color harmony groups three colors that are evenly spaced from another and form a triangle on the color wheel.



B7776F



60936F



6889B8

# Complementary

The Complementary color scheme is a pair of colors which are on the opposite of each other on the color wheel.



B7776F



6FAFB7

# Split Complementary

Split-complementary colors differ from the complementary color scheme. The scheme consists of three colors, the original color and two neighbors of the complement color.



4290B2



B7776F



439588

# Square

The Square scheme is like the rectangle color scheme, but the four colors are evenly spaced on the color wheel.



B7776F



7D8E5D



3194A0



8C81B1

# Rectangle

The Rectangle color scheme consists of four colors that form a rectangle on the color wheel.



B7776F



9F8457



3194A0



5B8CB8



# Sweetspot

The Sweet Spot groups the original color and five complimentary colors.



B7776F



EDD4D1



B76FB0



786967



F7F7F7



787878



# Same Dimension

The Same Dimension uses a secret algorithm to generate beautiful new colors.



B7776F



ED8A7E



B79A6F



5C5453



9C1100



1C0300



# Inverse Universe

The Inverse Universe completely reimagines the original color for something new.



6FAFB7



7EE1ED



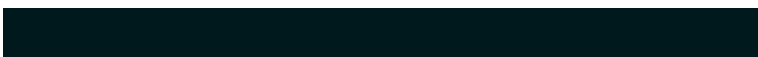
6F8CB7



535B5C



008A9C

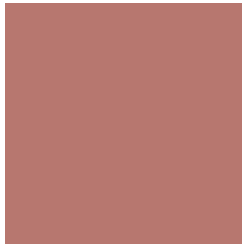


00191C



# Previews

## White Background



This preview shows how the Hex color B7776F looks on a white background.

## Color Contrast Check

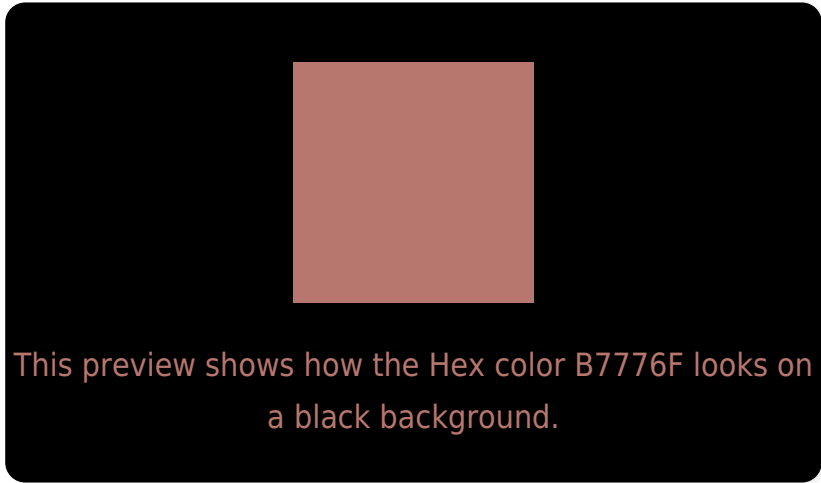
Large Text (above 18pt) WCAG AA ✓ Pass

Any Text WCAG AA × Fail

Large Text (above 18pt) WCAG AAA × Fail

Any Text WCAG AAA × Fail

# Black Background



## Color Contrast Check

Large Text (above 18pt) WCAG AA ✓ Pass

Any Text WCAG AA ✓ Pass

Large Text (above 18pt) WCAG AAA ✓ Pass

Any Text WCAG AAA × Fail

If you want to check with other color combinations, try the [Color Contrast Checker](#).



## Hex B7776F Background



This preview shows how black text looks on a background with the Hex color B7776F.



This preview shows how white text looks on a background with the Hex color B7776F.

# Color Blindness Simulation

Color vision deficiency is a very complex topic, and I could not describe the different causes any better than Wikipedia does, so if you want to learn more, you should check out their [article about color blindness](#).

## Dichromacy



**Original Color**  
B7776F

**Protanopia**  
8E8777

**Deuteranopia**  
9E836D



**Tritanopia**  
B8757E

# Trichromacy



**Original Color**  
B7776F

**Protanomaly**  
9D8174

**Deuteranomaly**  
A77F6E

**Tritanomaly**  
B87679

# Monochromacy



**Original Color**  
B7776F

**Achromatopsia**  
898989

**Achromatomaly**  
9A8280

# CSS Examples

## Text

The CSS property to change the color of the text to Hex B7776F is called "color". The color property can be set on classes, ids or directly on the HTML element.

This example shows how text in the color #B7776F looks like.

```
.text, #text, p{  
  color:#B7776F  
}
```

If you want to add a text shadow in that color use the text-shadow property, you can generate a text shadow directly with our [CSS Text Shadow Generator](#).

Here you see how black text with a 4 pixel #B7776F colored shadow looks like.

```
.shadow{ text-shadow: 4px 4px 2px #B7776F
}
```

## Border

The CSS property to change the border of an element to Hex B7776F is called "border". The border property can be set on classes, ids or directly on the HTML element.

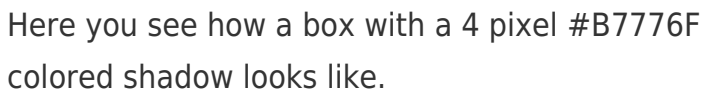
This example shows the color as border, it can be applied via the CSS property "border" or "border-color".

```
.border, #border, table{ border:4px solid
#B7776F }
```

If only the border color should be changed use the property `border-color`.

```
.border{ border-color:#B7776F }
```

If you want to add a box shadow in that color use:



Here you see how a box with a 4 pixel #B7776F colored shadow looks like.

```
.boxshadow{ -moz-box-shadow:4px 4px 4px  
4px #B7776F; -webkit-box-shadow:4px 4px  
4px 4px #B7776F; box-shadow:4px 4px 4px  
4px #B7776F }
```

# Background

The CSS property to change the background color of an element to Hex B7776F is called "background". The background property can be set on classes, ids or directly on the HTML element.

```
.background, #background, body{  
background:#B7776F }
```

If only the background color should be changed can be used:

```
.background{ background-color:#B7776F }
```

This example shows the color as background, it is applied via the CSS property "background".

To optimize and compress your CSS code, you can use our [online CSS compressor and optimizer](#) based on csstidy. If you want to create a linear or radial gradient as background or border, check our [CSS Gradient Generator](#).



Hey! You found this booklet interesting? Support Converting Colors with the new Membership Option!

The pro membership hides all ads, plus gives you double the colors in the color bucket, and more awesome pro features!

**[Learn more, Memberships starting at \\$2.50/m!](#)**

**Follow me  
on Twitter!**

@ConvertingColor