

Converting Colors

Hex(B77A54)

Have a look what the booklet for
Hex(B77A54) contains.

Hex(B77A54)	3
<i>Conversions</i>	4
<i>Details</i>	6
<i>Harmonies</i>	11
<i>Previews</i>	23
<i>Color Blindness Simulation</i>	26
<i>CSS Examples</i>	29

Color

Hex(B77A54)

Conversions

Conversions Part 1

Format	Color
Hex	B77A54
RGB	183, 122, 84
RGB Percent	72%, 48%, 33%
CMY	0.2824, 0.5216, 0.6706
CMYK	0.00, 0.33, 0.54, 0.28
HSL	23°, 41%, 52%
HSV	23°, 54%, 72%
XYZ	28.0882, 24.6264, 11.6605
YIQ	135.9070, 48.5540, 1.1140

Conversions

Conversions Part 2

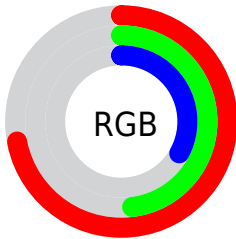
Format	Color
R _Y B	183, 146, 84
Decimal	12024404
CIE Lab	56.71, 19.64, 30.39
CIE LCh	57, 36.179, 57.125
Yxy	24.6264, 0.4363, 0.3825
Android (android.graphics.Color)	4290214484 (0xFFB77A54)
YUV	135.9070, -25.5902, 41.3006
Hunter-Lab	49.6250, 14.1888, 20.8061

Details

The Hex color **B77A54** is a dark color, and the websafe version is hex **996633**. A complement of this color would be **5491B7**, and the grayscale version is **888888**.

A 20% lighter version of the original color is **F2AF86**, and **7F4926** is the 20% darker color. If you saturate the color by 10%, you get **B76F42**, and if you desaturate by 10%, it is **B78566**.

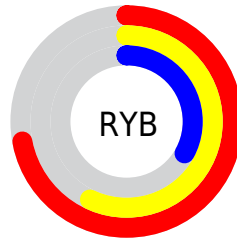
Distribution



Red (72%)

Green (48%)

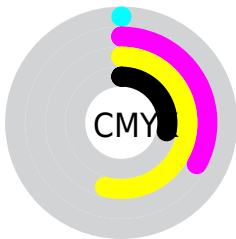
Blue (33%)



Red (72%)

Yellow (57%)

Blue (33%)

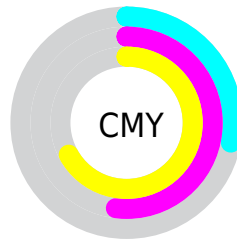


Cyan (0%)

Magenta (33%)

Yellow (54%)

Black (28%)



Cyan (28%)

Magenta (52%)

Yellow (67%)

Brightness & Saturation Gradients

These gradients show how the Hex color B77A54 changes by changing the brightness by 10 percent. The first figure shows a shift by +10% for each color and the second figure -10%.

Similar to the brightness gradients but the following saturation gradients show a change of the Hex color B77A54 by changing the saturation by 10% instead.

 B77A54

 B77A54

FFFFFF

 9B613C

 F2AF86

 7F4926

 FFCAA1

 643210

 FFE6BC

 4A1C00

 FFFFD8

 2F0700

 FFFFF4

 0E0000

 000000

 B77A54

 B77A54

 B76F42

 B78566

 B7632F

 B79179

 B7581D

 B79C8B

 B74D0B

 B7A79D

 B74600

 B7B2B0

 B7BEC2

 B7C9D4

 B7D4E6

 B7DFF9

Harmonies

Analogous

The Analogous color harmony consists of three colors that are next to each other on the color wheel.



C4716D



B77A54



9F8548

Triad

The Triadic color harmony groups three colors that are evenly spaced from another and form a triangle on the color wheel.



B77A54



259884



8781C0

Complementary

The Complementary color scheme is a pair of colors which are on the opposite of each other on the color wheel.



B77A54



5491B7

Split Complementary

Split-complementary colors differ from the complementary color scheme. The scheme consists of three colors, the original color and two neighbors of the complement color.



508CC7



B77A54



0098A4

Square

The Square scheme is like the rectangle color scheme, but the four colors are evenly spaced on the color wheel.



B77A54



599565



0094BC



AD76AB

Rectangle

The Rectangle color scheme consists of four colors that form a rectangle on the color wheel.



B77A54



8A8C4A



0094BC



7685C4

Sweetspot

The Sweet Spot groups the original color and five complimentary colors.



B77A54



EDD6C7



B75491



786A61



F7F7F7



787878

Same Dimension

The Same Dimension uses a secret algorithm to generate beautiful new colors.



B77A54



ED8E53



B7AB54



5C5653



9C3C00



1C0B00

Inverse Universe

The Inverse Universe completely reimagines the original color for something new.



5491B7



53B2ED



5460B7



53585C



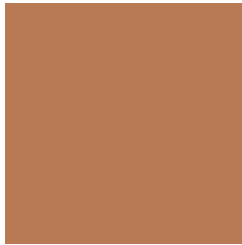
00609C



00111C

Previews

White Background



This preview shows how the Hex color B77A54 looks on a white background.

Color Contrast Check

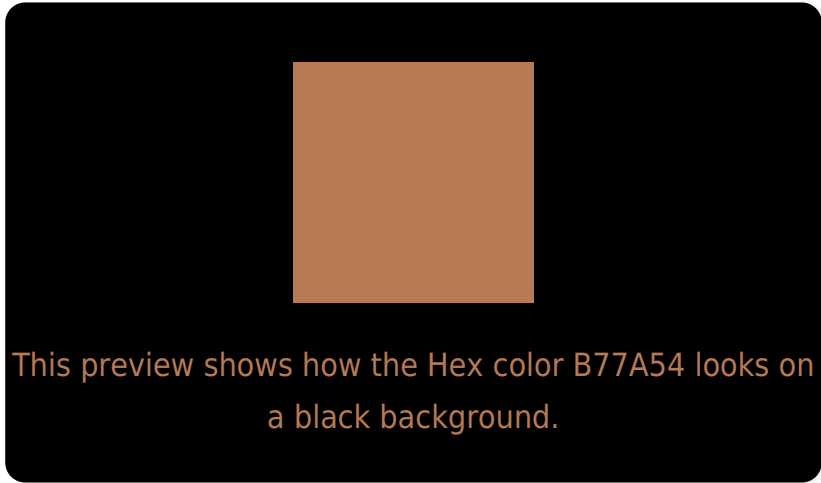
Large Text (above 18pt) WCAG AA ✓ Pass

Any Text WCAG AA × Fail

Large Text (above 18pt) WCAG AAA × Fail

Any Text WCAG AAA × Fail

Black Background



Color Contrast Check

Large Text (above 18pt) WCAG AA ✓ Pass

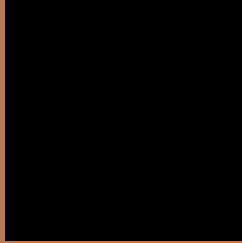
Any Text WCAG AA ✓ Pass

Large Text (above 18pt) WCAG AAA ✓ Pass

Any Text WCAG AAA × Fail

If you want to check with other color combinations, try the [Color Contrast Checker](#).

Hex B77A54 Background



This preview shows how black text looks on a background with the Hex color B77A54.



This preview shows how white text looks on a background with the Hex color B77A54.

Color Blindness Simulation

Color vision deficiency is a very complex topic, and I could not describe the different causes any better than Wikipedia does, so if you want to learn more, you should check out their [article about color blindness](#).

Dichromacy

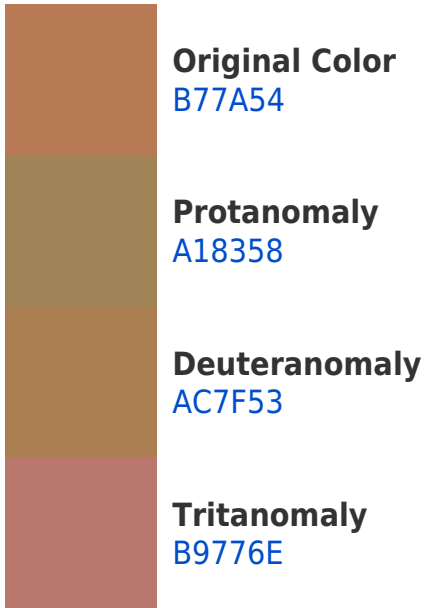


Original Color
B77A54

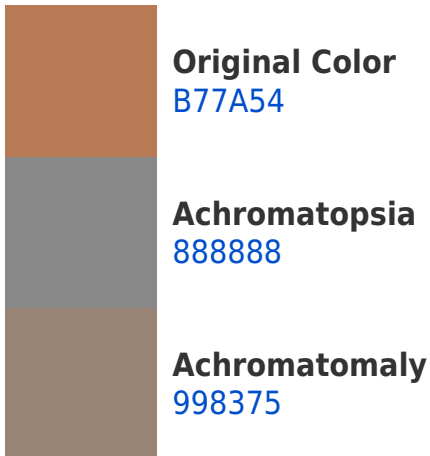
Protanopia
94885A

Deuteranopia
A58252

Trichromacy



Monochromacy



CSS Examples

Text

The CSS property to change the color of the text to Hex B77A54 is called "color". The color property can be set on classes, ids or directly on the HTML element.

This example shows how text in the color #B77A54 looks like.

```
.text, #text, p{  
    color:#B77A54  
}
```

If you want to add a text shadow in that color use the text-shadow property, you can generate a text shadow directly with our [CSS Text Shadow Generator](#).

Here you see how black text with a 4 pixel #B77A54 colored shadow looks like.

```
.shadow{ text-shadow: 4px 4px 2px #B77A54
}
```

Border

The CSS property to change the border of an element to Hex B77A54 is called "border". The border property can be set on classes, ids or directly on the HTML element.

This example shows the color as border, it can be applied via the CSS property "border" or "border-color".

```
.border, #border, table{ border:4px solid
#B77A54 }
```

If only the border color should be changed use the property `border-color`.

```
.border{ border-color:#B77A54 }
```

If you want to add a box shadow in that color use:

Here you see how a box with a 4 pixel #B77A54 colored shadow looks like.

```
.boxshadow{ -moz-box-shadow:4px 4px 4px  
4px #B77A54; -webkit-box-shadow:4px 4px  
4px 4px #B77A54; box-shadow:4px 4px 4px  
4px #B77A54 }
```

Background

The CSS property to change the background color of an element to Hex B77A54 is called "background". The background property can be set on classes, ids or directly on the HTML element.

```
.background, #background, body{  
background:#B77A54 }
```

If only the background color should be changed can be used:

```
.background{ background-color:#B77A54 }
```

This example shows the color as background, it is applied via the CSS property "background".

To optimize and compress your CSS code, you can use our [online CSS compressor and optimizer](#) based on csstidy. If you want to create a linear or radial gradient as background or border, check our [CSS Gradient Generator](#).

Hey! You found this booklet interesting? Support Converting Colors with the new Membership Option!

The pro membership hides all ads, plus gives you double the colors in the color bucket, and more awesome pro features!

[Learn more, Memberships starting at \\$2.50/m!](#)

**Follow me
on Twitter!**

@ConvertingColor