

# Converting Colors

Hex(B77C7C)

Have a look what the booklet for  
Hex(B77C7C) contains.

<b>Hex(B77C7C)</b> .....	3
<b><i>Conversions</i></b> .....	4
<b><i>Details</i></b> .....	6
<b><i>Harmonies</i></b> .....	11
<b><i>Previews</i></b> .....	23
<b><i>Color Blindness Simulation</i></b> .....	26
<b><i>CSS Examples</i></b> .....	29

# Color

Hex(**B77C7C**)

# Conversions

## Conversions Part 1

Format	Color
Hex	B77C7C
RGB	183, 124, 124
RGB Percent	72%, 49%, 49%
CMY	0.2824, 0.5137, 0.5137
CMYK	0.00, 0.32, 0.32, 0.28
HSL	0°, 29%, 60%
HSV	0°, 32%, 72%
XYZ	30.3742, 25.9378, 22.4744
YIQ	141.6410, 35.1640, 12.5080

# Conversions

## Conversions Part 2

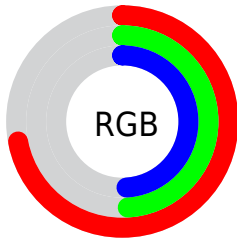
Format	Color
R <sub>Y</sub> B	183, 124, 124
Decimal	12024956
CIE Lab	57.98, 22.97, 9.35
CIE LCh	58, 24.802, 22.151
Yxy	25.9378, 0.3855, 0.3292
Android (android.graphics.Color)	4290215036 (0xFFB77C7C)
YUV	141.6410, -8.6970, 36.2718
Hunter-Lab	50.9292, 17.3314, 9.4865

# Details

The Hex color **B77C7C** is a dark color, and the websafe version is hex **996666**. A complement of this color would be **7CB7B7**, and the grayscale version is **8E8E8E**.

A 20% lighter version of the original color is **F0B1B0**, and **804A4B** is the 20% darker color. If you saturate the color by 10%, you get **B76A6A**, and if you desaturate by 10%, it is **B78E8E**.

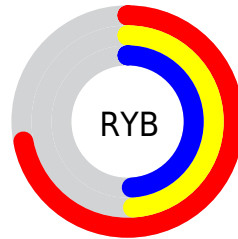
# Distribution



Red (72%)

Green (49%)

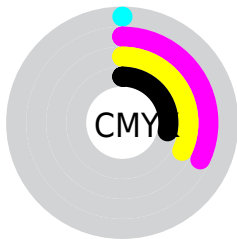
Blue (49%)



Red (72%)

Yellow (49%)

Blue (49%)

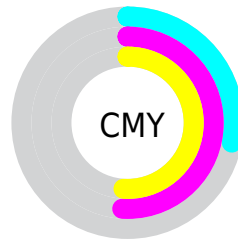


Cyan (0%)

Magenta (32%)

Yellow (32%)

Black (28%)



Cyan (28%)

Magenta (51%)

Yellow (51%)

# Brightness & Saturation Gradients

These gradients show how the Hex color B77C7C changes by changing the brightness by 10 percent. The first figure shows a shift by +10% for each color and the second figure -10%.

Similar to the brightness gradients but the following saturation gradients show a change of the Hex color B77C7C by changing the saturation by 10% instead.



 B77C7C

 B77C7C

FFFFFF

 9B6363

 F0B1B0

 804A4B

 FFCDCD

 663335

 FFE9E8

 4C1D20

 340608

 1B0001

 000000

 B77C7C

 B77C7C

 B76A6A

 B78E8E

 B75757

 B7A1A1

 B74545

 B7B3B3

 B73333

 B7C5C5

 B72121

 B7D8D8

 B70E0E

 B7EAEA

 B70000

 B7FCFC

 B7FFFF

# Harmonies

## Analogous

The Analogous color harmony consists of three colors that are next to each other on the color wheel.



B27C92



B77C7C



B0816A

# Triad

The Triadic color harmony groups three colors that are evenly spaced from another and form a triangle on the color wheel.



B77C7C



719470



678FB6

# Complementary

The Complementary color scheme is a pair of colors which are on the opposite of each other on the color wheel.



B77C7C



7CB7B7

# Split Complementary

Split-complementary colors differ from the complementary color scheme. The scheme consists of three colors, the original color and two neighbors of the complement color.



4D94AD



B77C7C



599785

# Square

The Square scheme is like the rectangle color scheme, but the four colors are evenly spaced on the color wheel.



B77C7C



8A8F63



48979B



8788B3

# Rectangle

The Rectangle color scheme consists of four colors that form a rectangle on the color wheel.



B77C7C



A68662



48979B



5D91B4



# Sweetspot

The Sweet Spot groups the original color and five complimentary colors.



B77C7C



EDD5D5



B77CB7



786969



F7F7F7



787878



# Same Dimension

The Same Dimension uses a secret algorithm to generate beautiful new colors.



B77C7C



ED9191



B79A7C



5C5353



9C0000



1C0000



# Inverse Universe

The Inverse Universe completely reimagines the original color for something new.



7CB7B7



91EDED



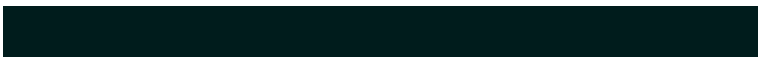
7C9AB7



535C5C



009C9C

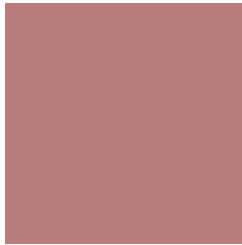


001C1C



# Previews

## White Background



This preview shows how the Hex color B77C7C looks on a white background.

## Color Contrast Check

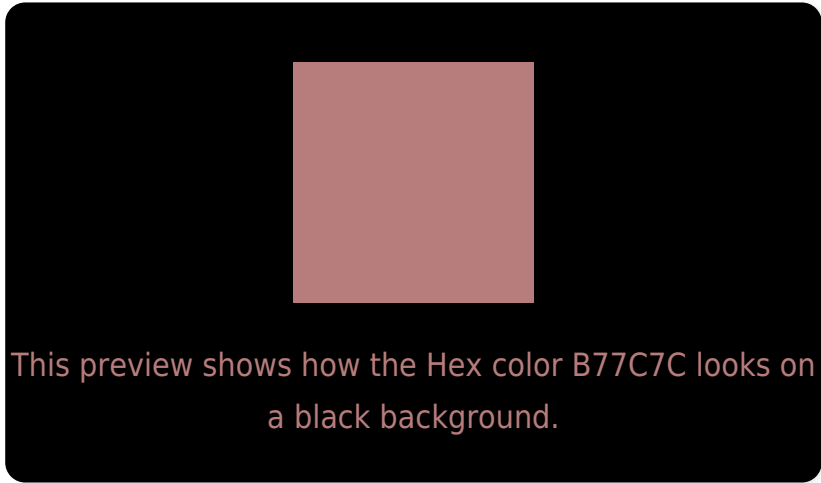
Large Text (above 18pt) WCAG AA ✓ Pass

Any Text WCAG AA × Fail

Large Text (above 18pt) WCAG AAA × Fail

Any Text WCAG AAA × Fail

# Black Background



## Color Contrast Check

Large Text (above 18pt) WCAG AA ✓ Pass

Any Text WCAG AA ✓ Pass

Large Text (above 18pt) WCAG AAA ✓ Pass

Any Text WCAG AAA × Fail

If you want to check with other color combinations, try the [Color Contrast Checker](#).



## Hex B77C7C Background



This preview shows how black text looks on a background with the Hex color B77C7C.



This preview shows how white text looks on a background with the Hex color B77C7C.

# Color Blindness Simulation

Color vision deficiency is a very complex topic, and I could not describe the different causes any better than Wikipedia does, so if you want to learn more, you should check out their [article about color blindness](#).

## Dichromacy



**Original Color**  
B77C7C

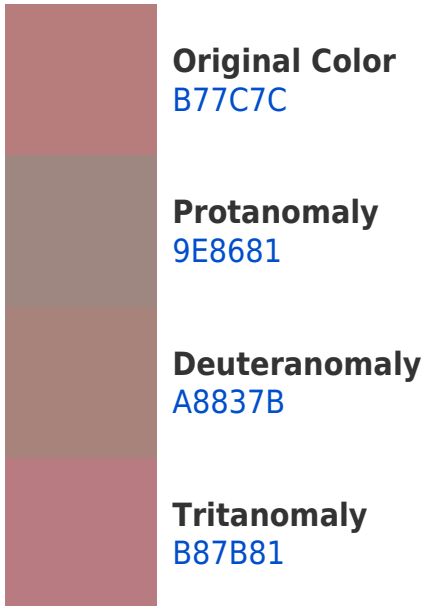
**Protanopia**  
908B84

**Deuteranopia**  
A0877A

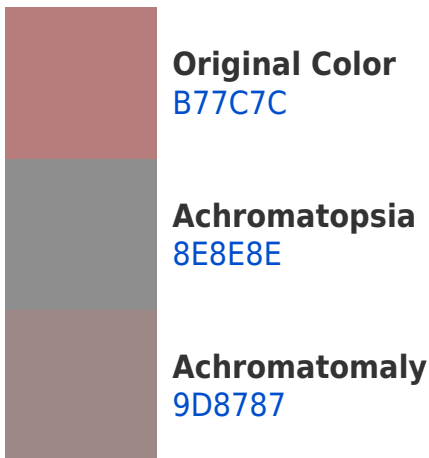


**Tritanopia**  
B87B84

# Trichromacy



# Monochromacy



# CSS Examples

## Text

The CSS property to change the color of the text to Hex B77C7C is called "color". The color property can be set on classes, ids or directly on the HTML element.

This example shows how text in the color #B77C7C looks like.

```
.text, #text, p{  
    color:#B77C7C  
}
```

If you want to add a text shadow in that color use the text-shadow property, you can generate a text shadow directly with our [CSS Text Shadow Generator](#).

Here you see how black text with a 4 pixel #B77C7C colored shadow looks like.

```
.shadow{ text-shadow: 4px 4px 2px #B77C7C
}
```

## Border

The CSS property to change the border of an element to Hex B77C7C is called "border". The border property can be set on classes, ids or directly on the HTML element.

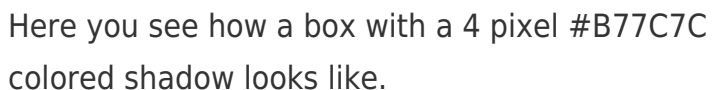
This example shows the color as border, it can be applied via the CSS property "border" or "border-color".

```
.border, #border, table{ border:4px solid
#B77C7C }
```

If only the border color should be changed use the property `border-color`.

```
.border{ border-color:#B77C7C }
```

If you want to add a box shadow in that color use:



Here you see how a box with a 4 pixel `#B77C7C` colored shadow looks like.

```
.boxshadow{ -moz-box-shadow:4px 4px 4px  
4px #B77C7C; -webkit-box-shadow:4px 4px  
4px 4px #B77C7C; box-shadow:4px 4px 4px  
4px #B77C7C }
```

# Background

The CSS property to change the background color of an element to Hex B77C7C is called "background". The background property can be set on classes, ids or directly on the HTML element.

```
.background, #background, body{  
background:#B77C7C }
```

If only the background color should be changed can be used:

```
.background{ background-color:#B77C7C }
```

This example shows the color as background, it is applied via the CSS property "background".

To optimize and compress your CSS code, you can use our [online CSS compressor and optimizer](#) based on csstidy. If you want to create a linear or radial gradient as background or border, check our [CSS Gradient Generator](#).



Hey! You found this booklet interesting? Support Converting Colors with the new Membership Option!

The pro membership hides all ads, plus gives you double the colors in the color bucket, and more awesome pro features!

**[Learn more, Memberships starting at \\$2.50/m!](#)**

**Follow me  
on Twitter!**

@ConvertingColor