

# Converting Colors

Hex(B78157)

Have a look what the booklet for  
Hex(B78157) contains.

<b>Hex(B78157)</b> .....	3
<b><i>Conversions</i></b> .....	4
<b><i>Details</i></b> .....	6
<b><i>Harmonies</i></b> .....	11
<b><i>Previews</i></b> .....	23
<b><i>Color Blindness Simulation</i></b> .....	26
<b><i>CSS Examples</i></b> .....	29

**Color**

**Hex(B78157)**

# Conversions

## Conversions Part 1

<b>Format</b>	<b>Color</b>
Hex	<a href="#">B78157</a>
RGB	<a href="#">183, 129, 87</a>
RGB Percent	<a href="#">72%, 51%, 34%</a>
CMY	<a href="#">0.2824, 0.4941, 0.6588</a>
CMYK	<a href="#">0.00, 0.30, 0.52, 0.28</a>
HSL	<a href="#">26°, 40%, 53%</a>
HSV	<a href="#">26°, 52%, 72%</a>
XYZ	<a href="#">29.0990, 26.4559, 12.5896</a>
YIQ	<a href="#">140.3580, 45.6660, -1.6140</a>

# Conversions

## Conversions Part 2

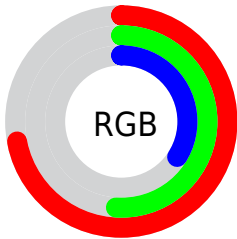
<b>Format</b>	<b>Color</b>
<b>R<sub>YB</sub></b>	183, 162, 87
Decimal	12026199
CIE <sub>Lab</sub>	58.47, 16.01, 30.96
CIE <sub>LCh</sub>	58, 34.852, 62.654
Yxy	26.4559, 0.4270, 0.3882
Android (android.graphics.Color)	4290216279 (0xFFB78157)
YUV	140.3580, -26.3055, 37.3970
Hunter-Lab	51.4353, 10.9727, 21.4925

# Details

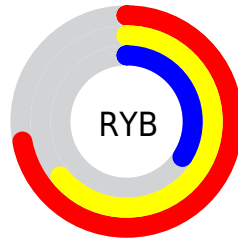
The Hex color **B78157** is a dark color, and the websafe version is hex **CC9966**. A complement of this color would be **578DB7**, and the grayscale version is **8D8D8D**.

A 20% lighter version of the original color is **F1B68A**, and **7F5028** is the 20% darker color. If you saturate the color by 10%, you get **B77745**, and if you desaturate by 10%, it is **B78B69**.

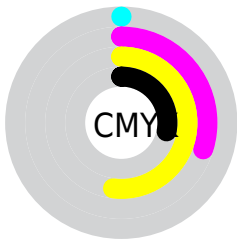
# Distribution



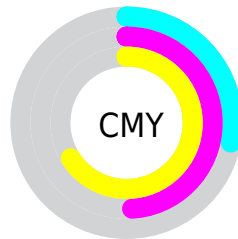
- Red (72%)
- Green (51%)
- Blue (34%)



- Red (72%)
- Yellow (64%)
- Blue (34%)



- Cyan (0%)
- Magenta (30%)
- Yellow (52%)
- Black (28%)



- Cyan (28%)
- Magenta (49%)
- Yellow (66%)

# Brightness & Saturation Gradients

These gradients show how the Hex color B78157 changes by changing the brightness by 10 percent. The first figure shows a shift by +10% for each color and the second figure -10%.

Similar to the brightness gradients but the following saturation gradients show a change of the Hex color B78157 by changing the saturation by 10% instead.



 B78157

 B78157

FFFFFF

 9B683F

 F1B68A

 7F5028

 FFD2A4

 643812

 FFEEBF

 4A2200

 FFFFDB

 300E00

 FFFFF8

 150000

 000000

 B78157

 B78157

 B77745

 B78B69

 B76C32

 B7967C

 B76220

 B7A08E

 B7580E

 B7AAA0

 B75000

 B7B4B3

 B7BFC5

 B7C9D7

 B7D3E9

 B7DEFC

# Harmonies

## Analogous

The Analogous color harmony consists of three colors that are next to each other on the color wheel.



C6786D



B78157



9E8C4F

# Triad

The Triadic color harmony groups three colors that are evenly spaced from another and form a triangle on the color wheel.



B78157



289D8E



9384C0

# Complementary

The Complementary color scheme is a pair of colors which are on the opposite of each other on the color wheel.



B78157



578DB7

# Split Complementary

Split-complementary colors differ from the complementary color scheme. The scheme consists of three colors, the original color and two neighbors of the complement color.



638FC9



B78157



009CAD

# Square

The Square scheme is like the rectangle color scheme, but the four colors are evenly spaced on the color wheel.



B78157



589A70



2497C2



B579A9

# Rectangle

The Rectangle color scheme consists of four colors that form a rectangle on the color wheel.



B78157



899253



2497C2



8587C5



# Sweetspot

The Sweet Spot groups the original color and five complimentary colors.



B78157



EDD8C7



B7578D



786B61



F7F7F7



787878



# Same Dimension

The Same Dimension uses a secret algorithm to generate beautiful new colors.



B78157



ED9958



B7B157



5C5753



9C4400



1C0C00



# Inverse Universe

The Inverse Universe completely reimagines the original color for something new.



578DB7



58ACED



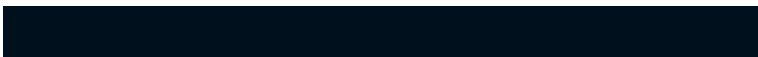
575DB7



53585C



00579C

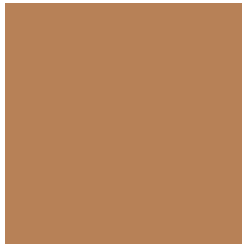


00101C



# Previews

## White Background



This preview shows how the Hex color B78157 looks on a white background.

## Color Contrast Check

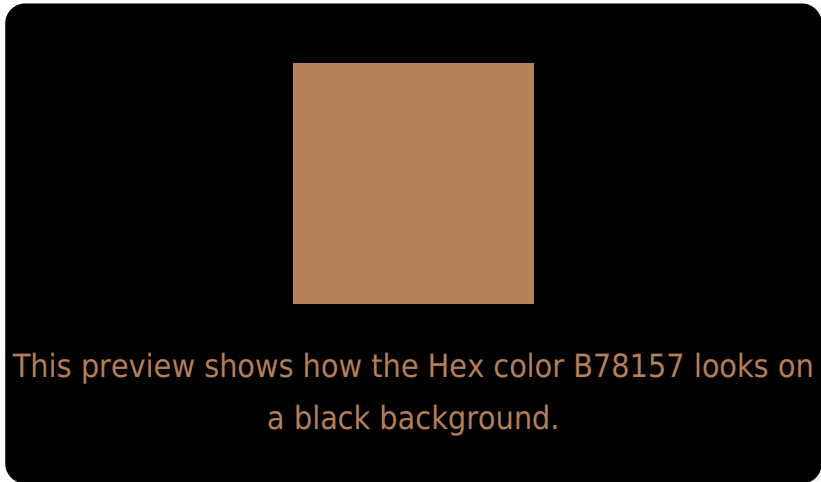
Large Text (above 18pt) WCAG AA ✓ Pass

Any Text WCAG AA × Fail

Large Text (above 18pt) WCAG AAA × Fail

Any Text WCAG AAA × Fail

# Black Background



## Color Contrast Check

Large Text (above 18pt) WCAG AA ✓ Pass

Any Text WCAG AA ✓ Pass

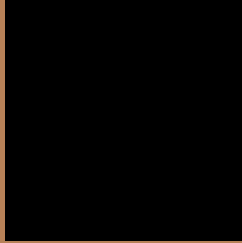
Large Text (above 18pt) WCAG AAA ✓ Pass

Any Text WCAG AAA × Fail

If you want to check with other color combinations, try the [Color Contrast Checker](#).



## Hex B78157 Background



This preview shows how black text looks on a background with the Hex color B78157.



This preview shows how white text looks on a background with the Hex color B78157.

# Color Blindness Simulation

Color vision deficiency is a very complex topic, and I could not describe the different causes any better than Wikipedia does, so if you want to learn more, you should check out their [article about color blindness](#).

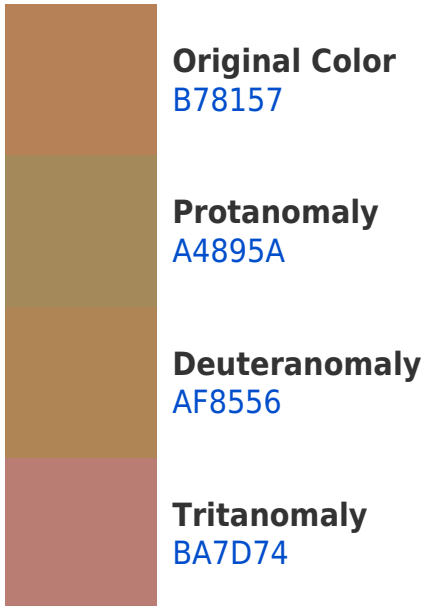
## Dichromacy





**Tritanopia**  
BB7B85

# Trichromacy



# Monochromacy



# CSS Examples

## Text

The CSS property to change the color of the text to Hex B78157 is called "color". The color property can be set on classes, ids or directly on the HTML element.

This example shows how text in the color #B78157 looks like.

```
.text, #text, p{  
    color:#B78157  
}
```

If you want to add a text shadow in that color use the text-shadow property, you can generate a text shadow directly with our [CSS Text Shadow Generator](#).

Here you see how black text with a 4 pixel #B78157 colored shadow looks like.

```
.shadow{ text-shadow: 4px 4px 2px #B78157  
}
```

## Border

The CSS property to change the border of an element to Hex B78157 is called "border". The border property can be set on classes, ids or directly on the HTML element.

This example shows the color as border, it can be applied via the CSS property "border" or "border-color".

```
.border, #border, table{ border:4px solid  
#B78157 }
```

If only the border color should be changed use the property `border-color`.

```
.border{ border-color:#B78157 }
```

If you want to add a box shadow in that color use:

Here you see how a box with a 4 pixel #B78157 colored shadow looks like.

```
.boxshadow{ -moz-box-shadow:4px 4px 4px  
4px #B78157; -webkit-box-shadow:4px 4px  
4px 4px #B78157; box-shadow:4px 4px 4px  
4px #B78157 }
```

# Background

The CSS property to change the background color of an element to Hex B78157 is called "background". The background property can be set on classes, ids or directly on the HTML element.

```
.background, #background, body{  
background:#B78157 }
```

If only the background color should be changed can be used:

```
.background{ background-color:#B78157 }
```

This example shows the color as background, it is applied via the CSS property "background".

To optimize and compress your CSS code, you can use our [online CSS compressor and optimizer](#) based on csstidy. If you want to create a linear or radial gradient as background or border, check our [CSS Gradient Generator](#).



Hey! You found this booklet interesting? Support Converting Colors with the new Membership Option!

The pro membership hides all ads, plus gives you double the colors in the color bucket, and more awesome pro features!

**[Learn more, Memberships starting at \\$2.50/m!](#)**

**Follow me  
on Twitter!**

@ConvertingColor