

Converting Colors

Hex(B78354)

Have a look what the booklet for
Hex(B78354) contains.

Hex(B78354)	3
<i>Conversions</i>	4
<i>Details</i>	6
<i>Harmonies</i>	11
<i>Previews</i>	23
<i>Color Blindness Simulation</i>	26
<i>CSS Examples</i>	29

Color

Hex(B78354)

Conversions

Conversions Part 1

Format	Color
Hex	B78354
RGB	183, 131, 84
RGB Percent	72%, 51%, 33%
CMY	0.2824, 0.4863, 0.6706
CMYK	0.00, 0.28, 0.54, 0.28
HSL	28°, 41%, 52%
HSV	28°, 54%, 72%
XYZ	29.2450, 26.9400, 12.0461
YIQ	141.1900, 46.0790, -3.5930

Conversions

Conversions Part 2

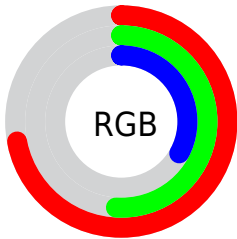
Format	Color
R_{YB}	183, 173, 84
Decimal	12026708
CIE _{Lab}	58.92, 14.63, 33.16
CIE _{LCh}	59, 36.241, 66.197
Yxy	26.9400, 0.4286, 0.3948
Android (android.graphics.Color)	4290216788 (0xFFB78354)
YUV	141.1900, -28.1947, 36.6674
Hunter-Lab	51.9037, 9.7437, 22.5723

Details

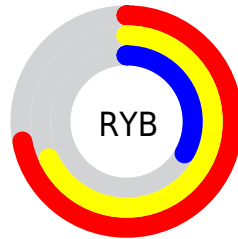
The Hex color **B78354** is a dark color, and the websafe version is hex **CC9966**. A complement of this color would be **5488B7**, and the grayscale version is **8D8D8D**.

A 20% lighter version of the original color is **F1B886**, and **7F5225** is the 20% darker color. If you saturate the color by 10%, you get **B77942**, and if you desaturate by 10%, it is **B78D66**.

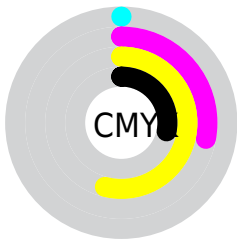
Distribution



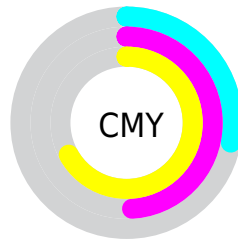
- Red (72%)
- Green (51%)
- Blue (33%)



- Red (72%)
- Yellow (68%)
- Blue (33%)



- Cyan (0%)
- Magenta (28%)
- Yellow (54%)
- Black (28%)



- Cyan (28%)
- Magenta (49%)
- Yellow (67%)

Brightness & Saturation Gradients

These gradients show how the Hex color B78354 changes by changing the brightness by 10 percent. The first figure shows a shift by +10% for each color and the second figure -10%.

Similar to the brightness gradients but the following saturation gradients show a change of the Hex color B78354 by changing the saturation by 10% instead.

 B78354

 B78354

FFFFFF

 9B6A3C

 F1B886

 7F5225

 FFD4A1

 643A0E

 FFF0BC

 4A2400

 FFFFD8

 301000

 FFFFF5

 160000

 000000

 B78354

 B78354

 B77942

 B78D66

 B7702F

 B79679

 B7661D

 B7A08B

 B75D0B

 B7A99D

 B75700

 B7B3B0

 B7BDC2

 B7C6D4

 B7D0E6

 B7DAF9

Harmonies

Analogous

The Analogous color harmony consists of three colors that are next to each other on the color wheel.



C8796A



B78354



9C8E4D

Triad

The Triadic color harmony groups three colors that are evenly spaced from another and form a triangle on the color wheel.



B78354



169F94



9A83C1

Complementary

The Complementary color scheme is a pair of colors which are on the opposite of each other on the color wheel.



B78354



5488B7

Split Complementary

Split-complementary colors differ from the complementary color scheme. The scheme consists of three colors, the original color and two neighbors of the complement color.



698FCD



B78354



009DB2

Square

The Square scheme is like the rectangle color scheme, but the four colors are evenly spaced on the color wheel.



B78354



529C73



2498C7



BB78A8

Rectangle

The Rectangle color scheme consists of four colors that form a rectangle on the color wheel.



B78354



869453



2498C7



8B87C7

Sweetspot

The Sweet Spot groups the original color and five complimentary colors.



B78354



EDD9C7



B75489



786C61



F7F7F7



787878

Same Dimension

The Same Dimension uses a secret algorithm to generate beautiful new colors.



B78354



ED9C53



B7B454



5C5753



9C4A00



1C0D00

Inverse Universe

The Inverse Universe completely reimagines the original color for something new.



5488B7



53A4ED



5457B7



53575C



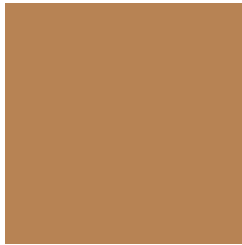
00529C



000F1C

Previews

White Background



This preview shows how the Hex color B78354 looks on a white background.

Color Contrast Check

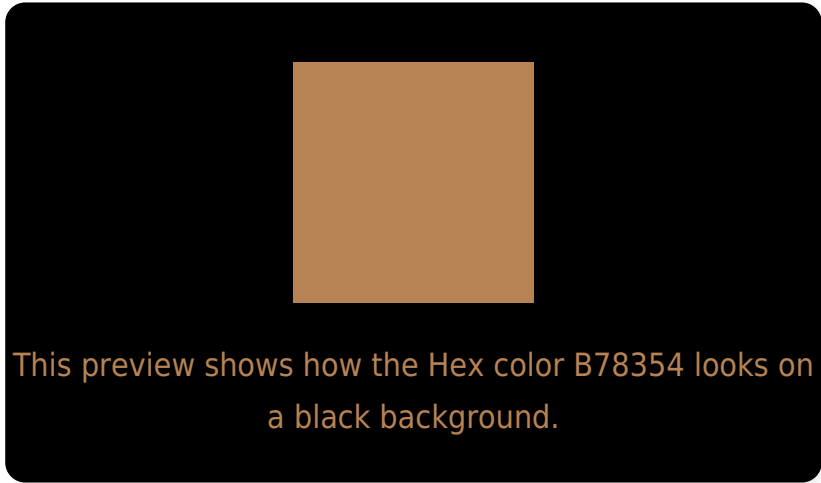
Large Text (above 18pt) WCAG AA ✓ Pass

Any Text WCAG AA × Fail

Large Text (above 18pt) WCAG AAA × Fail

Any Text WCAG AAA × Fail

Black Background



Color Contrast Check

Large Text (above 18pt) WCAG AA ✓ Pass

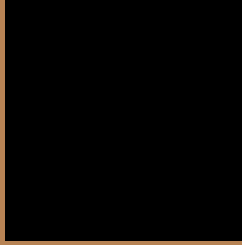
Any Text WCAG AA ✓ Pass

Large Text (above 18pt) WCAG AAA ✓ Pass

Any Text WCAG AAA × Fail

If you want to check with other color combinations, try the [Color Contrast Checker](#).

Hex B78354 Background



This preview shows how black text looks on a background with the Hex color B78354.



This preview shows how white text looks on a background with the Hex color B78354.

Color Blindness Simulation

Color vision deficiency is a very complex topic, and I could not describe the different causes any better than Wikipedia does, so if you want to learn more, you should check out their [article about color blindness](#).

Dichromacy



Original Color
B78354

Protanopia
9B8E58

Deuteranopia
AD8853



Tritanopia
BB7D86

Trichromacy



Original Color
B78354

Protanomaly
A58A57

Deuteranomaly
B18653

Tritanomaly
BA7F74

Monochromacy



Original Color
B78354

Achromatopsia
8D8D8D

Achromatomaly
9C8978

CSS Examples

Text

The CSS property to change the color of the text to Hex B78354 is called "color". The color property can be set on classes, ids or directly on the HTML element.

This example shows how text in the color #B78354 looks like.

```
.text, #text, p{  
    color:#B78354  
}
```

If you want to add a text shadow in that color use the text-shadow property, you can generate a text shadow directly with our [CSS Text Shadow Generator](#).

Here you see how black text with a 4 pixel #B78354 colored shadow looks like.

```
.shadow{ text-shadow: 4px 4px 2px #B78354
}
```

Border

The CSS property to change the border of an element to Hex B78354 is called "border". The border property can be set on classes, ids or directly on the HTML element.

This example shows the color as border, it can be applied via the CSS property "border" or "border-color".

```
.border, #border, table{ border:4px solid
#B78354 }
```

If only the border color should be changed use the property `border-color`.

```
.border{ border-color:#B78354 }
```

If you want to add a box shadow in that color use:

Here you see how a box with a 4 pixel #B78354 colored shadow looks like.

```
.boxshadow{ -moz-box-shadow:4px 4px 4px  
4px #B78354; -webkit-box-shadow:4px 4px  
4px 4px #B78354; box-shadow:4px 4px 4px  
4px #B78354 }
```

Background

The CSS property to change the background color of an element to Hex B78354 is called "background". The background property can be set on classes, ids or directly on the HTML element.

```
.background, #background, body{  
background:#B78354 }
```

If only the background color should be changed can be used:

```
.background{ background-color:#B78354 }
```

This example shows the color as background, it is applied via the CSS property "background".

To optimize and compress your CSS code, you can use our [online CSS compressor and optimizer](#) based on csstidy. If you want to create a linear or radial gradient as background or border, check our [CSS Gradient Generator](#).

Hey! You found this booklet interesting? Support Converting Colors with the new Membership Option!

The pro membership hides all ads, plus gives you double the colors in the color bucket, and more awesome pro features!

[Learn more, Memberships starting at \\$2.50/m!](#)

**Follow me
on Twitter!**

@ConvertingColor