

# Converting Colors

Hex(B78786)

Have a look what the booklet for  
Hex(B78786) contains.

<b>Hex(B78786)</b> .....	3
<i><b>Conversions</b></i> .....	4
<i><b>Details</b></i> .....	6
<i><b>Harmonies</b></i> .....	11
<i><b>Previews</b></i> .....	23
<i><b>Color Blindness Simulation</b></i> .....	26
<i><b>CSS Examples</b></i> .....	29

# **Color**

**Hex(B78786)**

# Conversions

## Conversions Part 1

Format	Color
Hex	B78786
RGB	183, 135, 134
RGB Percent	72%, 53%, 53%
CMY	0.2824, 0.4706, 0.4745
CMYK	0.00, 0.26, 0.27, 0.28
HSL	1°, 25%, 62%
HSV	1°, 27%, 72%
XYZ	32.4955, 29.1165, 26.4616
YIQ	149.2380, 28.9290, 9.8650

# Conversions

## Conversions Part 2

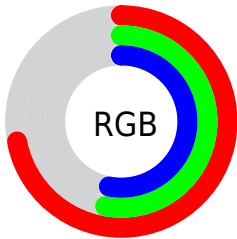
<b>Format</b>	<b>Color</b>
<a href="#">RYB</a>	<a href="#">183, 135, 134</a>
Decimal	<a href="#">12027782</a>
CIELab	<a href="#">60.88, 18.22, 7.75</a>
CIELCh	<a href="#">61, 19.803, 23.037</a>
Yxy	<a href="#">29.1165, 0.3690, 0.3306</a>
Android (android.graphics.Color)	<a href="#">4290217862 (0xFFB78786)</a>
YUV	<a href="#">149.2380, -7.5123, 29.6093</a>
Hunter-Lab	<a href="#">53.9597, 13.0665, 8.6962</a>

# Details

The Hex color **B78786** is a light color, and the websafe version is hex **CC9999**. A complement of this color would be **86B6B7**, and the grayscale version is **959595**.

A 20% lighter version of the original color is **F0BCBB**, and **815554** is the 20% darker color. If you saturate the color by 10%, you get **B77574**, and if you desaturate by 10%, it is **B79998**.

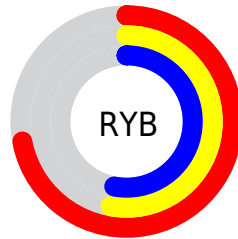
# Distribution



Red (72%)

Green (53%)

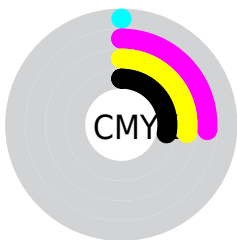
Blue (53%)



Red (72%)

Yellow (53%)

Blue (53%)

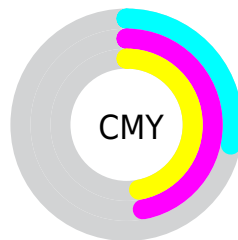


Cyan (0%)

Magenta (26%)

Yellow (27%)

Black (28%)



Cyan (28%)

Magenta (47%)

Yellow (47%)

# Brightness & Saturation Gradients

These gradients show how the Hex color B78786 changes by changing the brightness by 10 percent. The first figure shows a shift by +10% for each color and the second figure -10%.

Similar to the brightness gradients but the following saturation gradients show a change of the Hex color B78786 by changing the saturation by 10% instead.



 B78786

 B78786

FFFFFF

 9C6E6D

 F0BCBB

 815554

 FFD8D7

 673D3D

 FFF5F3

 4E2728

 361213

 220000

 000000

 B78786

 B78786

 B77574

 B79998

 B76361

 B7ABAB

 B7514F

 B7BDBD

 B73F3D

 B7CFCF

 B72D2B

 B7E1E2

 B71B18

 B7F3F4

 B70A06

 B7FFFF

 B70400

# Harmonies

## Analogous

The Analogous color harmony consists of three colors that are next to each other on the color wheel.



B38798



B78786



B18B78

# Triad

The Triadic color harmony groups three colors that are evenly spaced from another and form a triangle on the color wheel.



B78786



7E9A7D



7996B5

# Complementary

The Complementary color scheme is a pair of colors which are on the opposite of each other on the color wheel.



B78786



86B6B7

# Split Complementary

Split-complementary colors differ from the complementary color scheme. The scheme consists of three colors, the original color and two neighbors of the complement color.



679AAE



B78786



6C9D8E

# Square

The Square scheme is like the rectangle color scheme, but the four colors are evenly spaced on the color wheel.



B78786



929673



629DA0



9090B3

# Rectangle

The Rectangle color scheme consists of four colors that form a rectangle on the color wheel.



B78786



A98E72



629DA0



7297B4



# Sweetspot

The Sweet Spot groups the original color and five complimentary colors.



B78786



EDDBDA



B786B6



786C6C



F7F7F7



787878



# Same Dimension

The Same Dimension uses a secret algorithm to generate beautiful new colors.



B78786



EDA3A1



B79F86



5C5353



9C0300



1C0100



# Inverse Universe

The Inverse Universe completely reimagines the original color for something new.



86B6B7



A1ECED



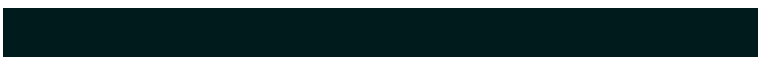
869EB7



535C5C



00989C

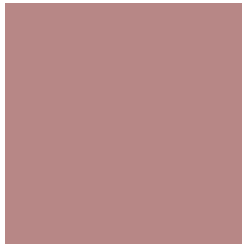


001B1C



# Previews

## White Background



This preview shows how the Hex color B78786 looks on a white background.

## Color Contrast Check

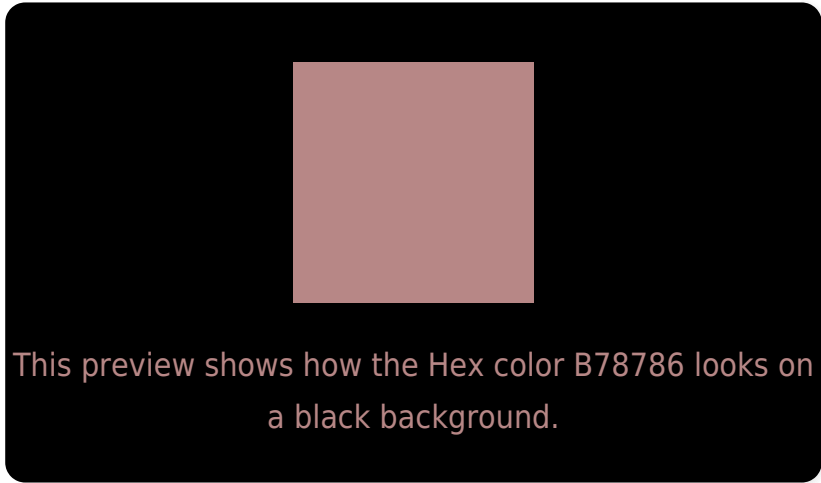
Large Text (above 18pt) WCAG AA ✓ Pass

Any Text WCAG AA × Fail

Large Text (above 18pt) WCAG AAA × Fail

Any Text WCAG AAA × Fail

# Black Background



## Color Contrast Check

Large Text (above 18pt) WCAG AA ✓ Pass

Any Text WCAG AA ✓ Pass

Large Text (above 18pt) WCAG AAA ✓ Pass

Any Text WCAG AAA × Fail

If you want to check with other color combinations, try the [Color Contrast Checker](#).



## Hex B78786 Background



This preview shows how black text looks on a background with the Hex color B78786.



This preview shows how white text looks on a background with the Hex color B78786.

# Color Blindness Simulation

Color vision deficiency is a very complex topic, and I could not describe the different causes any better than Wikipedia does, so if you want to learn more, you should check out their [article about color blindness](#).

## Dichromacy





**Tritanopia**  
B88590

# Trichromacy



**Original Color**  
B78786

**Protanomaly**  
A38F8A

**Deuteranomaly**  
AD8B85

**Tritanomaly**  
B8868C

# Monochromacy



**Original Color**  
B78786

**Achromatopsia**  
959595

**Achromatomaly**  
A19090

# CSS Examples

## Text

The CSS property to change the color of the text to Hex B78786 is called "color". The color property can be set on classes, ids or directly on the HTML element.

This example shows how text in the color #B78786 looks like.

```
.text, #text, p{  
    color:#B78786  
}
```

If you want to add a text shadow in that color use the text-shadow property, you can generate a text shadow directly with our [CSS Text Shadow Generator](#).

Here you see how black text with a 4 pixel #B78786 colored shadow looks like.

```
.shadow{ text-shadow: 4px 4px 2px #B78786
}
```

## Border

The CSS property to change the border of an element to Hex B78786 is called "border". The border property can be set on classes, ids or directly on the HTML element.

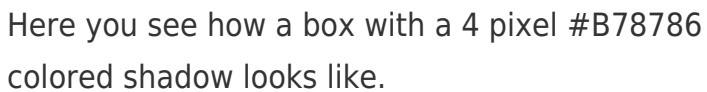
This example shows the color as border, it can be applied via the CSS property "border" or "border-color".

```
.border, #border, table{ border:4px solid
#B78786 }
```

If only the border color should be changed use the property `border-color`.

```
.border{ border-color:#B78786 }
```

If you want to add a box shadow in that color use:



Here you see how a box with a 4 pixel #B78786 colored shadow looks like.

```
.boxshadow{ -moz-box-shadow:4px 4px 4px  
4px #B78786; -webkit-box-shadow:4px 4px  
4px 4px #B78786; box-shadow:4px 4px 4px  
4px #B78786 }
```

# Background

The CSS property to change the background color of an element to Hex B78786 is called "background". The background property can be set on classes, ids or directly on the HTML element.

```
.background, #background, body{  
background:#B78786 }
```

If only the background color should be changed can be used:

```
.background{ background-color:#B78786 }
```

This example shows the color as background, it is applied via the CSS property "background".

To optimize and compress your CSS code, you can use our [online CSS compressor and optimizer](#) based on csstidy. If you want to create a linear or radial gradient as background or border, check our [CSS Gradient Generator](#).



Hey! You found this booklet interesting? Support Converting Colors with the new Membership Option!

The pro membership hides all ads, plus gives you double the colors in the color bucket, and more awesome pro features!

**[Learn more, Memberships starting at \\$2.50/m!](#)**

**Follow me  
on Twitter!**

@ConvertingColor