

Converting Colors

Hex(B78792)

Have a look what the booklet for
Hex(B78792) contains.

Hex(B78792)	3
<i>Conversions</i>	4
<i>Details</i>	6
<i>Harmonies</i>	11
<i>Previews</i>	23
<i>Color Blindness Simulation</i>	26
<i>CSS Examples</i>	29

Color

Hex(B78792)

Conversions

Conversions Part 1

Format	Color
Hex	B78792
RGB	183, 135, 146
RGB Percent	72%, 53%, 57%
CMY	0.2824, 0.4706, 0.4275
CMYK	0.00, 0.26, 0.20, 0.28
HSL	346°, 25%, 62%
HSV	346°, 26%, 72%
XYZ	33.3807, 29.4705, 31.1232
YIQ	150.6060, 25.0770, 13.5970

Conversions

Conversions Part 2

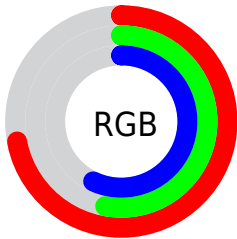
Format	Color
RYB	183, 135, 146
Decimal	12027794
CIELab	61.19, 20.03, 1.35
CIELCh	61, 20.078, 3.850
Yxy	29.4705, 0.3552, 0.3136
Android (android.graphics.Color)	4290217874 (0xFFB78792)
YUV	150.6060, -2.2708, 28.4095
Hunter-Lab	54.2868, 14.7570, 4.0092

Details

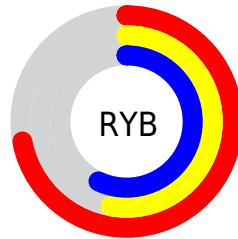
The Hex color **B78792** is a light color, and the websafe version is hex **CC9999**. A complement of this color would be **87B7AC**, and the grayscale version is **979797**.

A 20% lighter version of the original color is **F0BDC8**, and **815560** is the 20% darker color. If you saturate the color by 10%, you get **B77584**, and if you desaturate by 10%, it is **B799A0**.

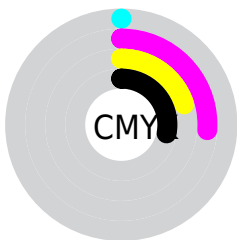
Distribution



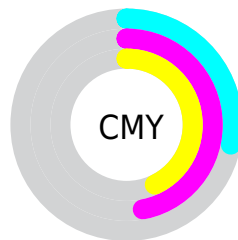
- Red (72%)
- Green (53%)
- Blue (57%)



- Red (72%)
- Yellow (53%)
- Blue (57%)



- Cyan (0%)
- Magenta (26%)
- Yellow (20%)
- Black (28%)



- Cyan (28%)
- Magenta (47%)
- Yellow (43%)

Brightness & Saturation Gradients

These gradients show how the Hex color B78792 changes by changing the brightness by 10 percent. The first figure shows a shift by +10% for each color and the second figure -10%.

Similar to the brightness gradients but the following saturation gradients show a change of the Hex color B78792 by changing the saturation by 10% instead.

 B78792

 B78792

FFFFFF

 9C6D78

 F0BDC8

 815560

 FFD8E4

 673D48

 FFF5FF

 4E2732

 36111D

 240002

 000000

 B78792

 B78792

 B77584

 B799A0

 B76276

 B7ACAE

 B75068

 B7BEBC

 B73E5A

 B7D0CA

 B72C4B

 B7E3D9

 B7193D

 B7F5E7

 B7072F

 B7FFF5

 B7002A

 B7FFFF

Harmonies

Analogous

The Analogous color harmony consists of three colors that are next to each other on the color wheel.



AD89A4



B78792



B78981

Triad

The Triadic color harmony groups three colors that are evenly spaced from another and form a triangle on the color wheel.



B78792



8B9976



6C9AB3

Complementary

The Complementary color scheme is a pair of colors which are on the opposite of each other on the color wheel.



B78792



87B7AC

Split Complementary

Split-complementary colors differ from the complementary color scheme. The scheme consists of three colors, the original color and two neighbors of the complement color.



629DA7



B78792



779C84

Square

The Square scheme is like the rectangle color scheme, but the four colors are evenly spaced on the color wheel.



B78792



9F9370



679E95



8295B7

Rectangle

The Rectangle color scheme consists of four colors that form a rectangle on the color wheel.



B78792



B28C78



679E95



679BB0

Sweetspot

The Sweet Spot groups the original color and five complimentary colors.



B78792



EDDADF



AC87B7



786C6F



F7F7F7



787878

Same Dimension

The Same Dimension uses a secret algorithm to generate beautiful new colors.



B78792



EDA4B4



B79487



5C5355



9C0024



1C0006

Inverse Universe

The Inverse Universe completely reimagines the original color for something new.



B78792



EDA4B4



87AAB7



5C5355



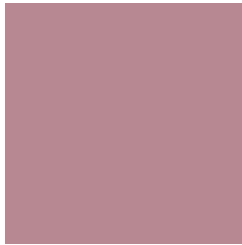
9C0024



1C0006

Previews

White Background



This preview shows how the Hex color B78792 looks on a white background.

Color Contrast Check

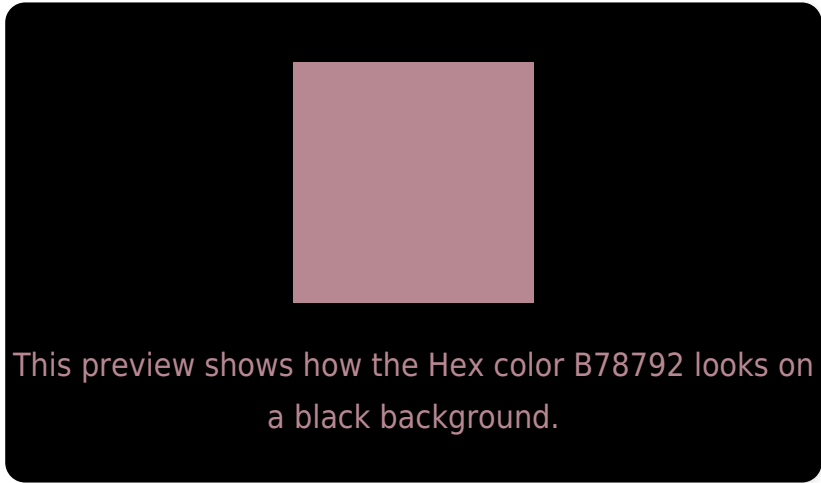
Large Text (above 18pt) WCAG AA ✓ Pass

Any Text WCAG AA ✗ Fail

Large Text (above 18pt) WCAG AAA ✗ Fail

Any Text WCAG AAA ✗ Fail

Black Background



Color Contrast Check

Large Text (above 18pt) WCAG AA ✓ Pass

Any Text WCAG AA ✓ Pass

Large Text (above 18pt) WCAG AAA ✓ Pass

Any Text WCAG AAA × Fail

If you want to check with other color combinations, try the [Color Contrast Checker](#).

Hex B78792 Background



This preview shows how black text looks on a background with the Hex color B78792.

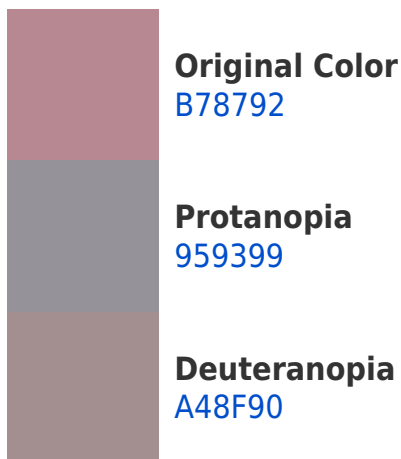


This preview shows how white text looks on a background with the Hex color B78792.

Color Blindness Simulation

Color vision deficiency is a very complex topic, and I could not describe the different causes any better than Wikipedia does, so if you want to learn more, you should check out their [article about color blindness](#).

Dichromacy





Tritanopia
B78791

Trichromacy



Original Color
B78792

Protanomaly
A18F96

Deuteranomaly
AB8C91

Tritanomaly
B78791

Monochromacy



Original Color
B78792

Achromatopsia
979797

Achromatomaly
A39195

CSS Examples

Text

The CSS property to change the color of the text to Hex B78792 is called "color". The color property can be set on classes, ids or directly on the HTML element.

This example shows how text in the color #B78792 looks like.

```
.text, #text, p{  
    color:#B78792  
}
```

If you want to add a text shadow in that color use the text-shadow property, you can generate a text shadow directly with our [CSS Text Shadow Generator](#).

Here you see how black text with a 4 pixel #B78792 colored shadow looks like.

```
.shadow{ text-shadow: 4px 4px 2px #B78792
}
```

Border

The CSS property to change the border of an element to Hex B78792 is called "border". The border property can be set on classes, ids or directly on the HTML element.

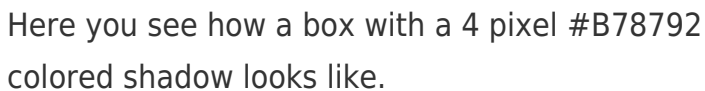
This example shows the color as border, it can be applied via the CSS property "border" or "border-color".

```
.border, #border, table{ border:4px solid
#B78792 }
```

If only the border color should be changed use the property `border-color`.

```
.border{ border-color:#B78792 }
```

If you want to add a box shadow in that color use:



Here you see how a box with a 4 pixel #B78792 colored shadow looks like.

```
.boxshadow{ -moz-box-shadow:4px 4px 4px  
4px #B78792; -webkit-box-shadow:4px 4px  
4px 4px #B78792; box-shadow:4px 4px 4px  
4px #B78792 }
```

Background

The CSS property to change the background color of an element to Hex B78792 is called "background". The background property can be set on classes, ids or directly on the HTML element.

```
.background, #background, body{  
background:#B78792 }
```

If only the background color should be changed can be used:

```
.background{ background-color:#B78792 }
```

This example shows the color as background, it is applied via the CSS property "background".

To optimize and compress your CSS code, you can use our [online CSS compressor and optimizer](#) based on csstidy. If you want to create a linear or radial gradient as background or border, check our [CSS Gradient Generator](#).

Hey! You found this booklet interesting? Support Converting Colors with the new Membership Option!

The pro membership hides all ads, plus gives you double the colors in the color bucket, and more awesome pro features!

[Learn more, Memberships starting at \\$2.50/m!](#)

**Follow me
on Twitter!**

@ConvertingColor