

Converting Colors

Hex(B78A8E)

Have a look what the booklet for
Hex(B78A8E) contains.

Hex(B78A8E)	3
<i>Conversions</i>	4
<i>Details</i>	6
<i>Harmonies</i>	11
<i>Previews</i>	23
<i>Color Blindness Simulation</i>	26
<i>CSS Examples</i>	29

Color

Hex(B78A8E)

Conversions

Conversions Part 1

Format	Color
Hex	B78A8E
RGB	183, 138, 142
RGB Percent	72%, 54%, 56%
CMY	0.2824, 0.4588, 0.4431
CMYK	0.00, 0.25, 0.22, 0.28
HSL	355°, 24%, 63%
HSV	355°, 25%, 72%
XYZ	33.4994, 30.1972, 29.6542
YIQ	151.9110, 25.5360, 10.7840

Conversions

Conversions Part 2

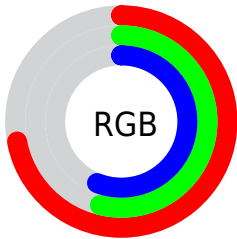
Format	Color
RYB	183, 138, 142
Decimal	12028558
CIELab	61.82, 17.74, 4.54
CIElCh	62, 18.309, 14.355
Yxy	30.1972, 0.3589, 0.3235
Android (android.graphics.Color)	4290218638 (0xFFB78A8E)
YUV	151.9110, -4.8861, 27.2651
Hunter-Lab	54.9520, 12.6497, 6.4712

Details

The Hex color **B78A8E** is a light color, and the websafe version is hex **CC9999**. A complement of this color would be **8AB7B3**, and the grayscale version is **989898**.

A 20% lighter version of the original color is **F0C0C4**, and **81585C** is the 20% darker color. If you saturate the color by 10%, you get **B7787D**, and if you desaturate by 10%, it is **B79C9F**.

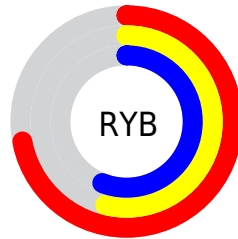
Distribution



Red (72%)

Green (54%)

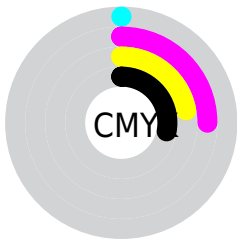
Blue (56%)



Red (72%)

Yellow (54%)

Blue (56%)

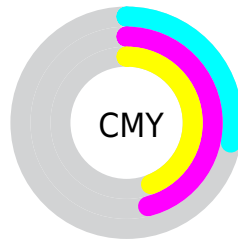


Cyan (0%)

Magenta (25%)

Yellow (22%)

Black (28%)



Cyan (28%)

Magenta (46%)

Yellow (44%)

Brightness & Saturation Gradients

These gradients show how the Hex color B78A8E changes by changing the brightness by 10 percent. The first figure shows a shift by +10% for each color and the second figure -10%.

Similar to the brightness gradients but the following saturation gradients show a change of the Hex color B78A8E by changing the saturation by 10% instead.


 B78A8E

 B78A8E

FFFFFF

 9C7074

 F0C0C4

 81585C

 FFDCE0

 674044

 FFF8FC

 4E2A2E

 36141A

 230000

 000000

 B78A8E

 B78A8E

 B7787D

 B79C9F

 B7656D

 B7AFAF

 B7535C

 B7C1C0

 B7414B

 B7D3D1

 B72E3B

 B7E6E1

 B71C2A

 B7F8F2

 B70A19

 B7FFFF

 B70010

Harmonies

Analogous

The Analogous color harmony consists of three colors that are next to each other on the color wheel.



B18B9F



B78A8E



B48D7F

Triad

The Triadic color harmony groups three colors that are evenly spaced from another and form a triangle on the color wheel.



B78A8E



879B7E



7899B4

Complementary

The Complementary color scheme is a pair of colors which are on the opposite of each other on the color wheel.



B78A8E



8AB7B3

Split Complementary

Split-complementary colors differ from the complementary color scheme. The scheme consists of three colors, the original color and two neighbors of the complement color.



6B9DAB



B78A8E



769E8C

Square

The Square scheme is like the rectangle color scheme, but the four colors are evenly spaced on the color wheel.



B78A8E



9A9776



6A9F9D



8D94B5

Rectangle

The Rectangle color scheme consists of four colors that form a rectangle on the color wheel.



B78A8E



AE9079



6A9F9D



729BB2

Sweetspot

The Sweet Spot groups the original color and five complimentary colors.



B78A8E



EDDDDE



B38AB7



786E6F



F7F7F7



787878

Same Dimension

The Same Dimension uses a secret algorithm to generate beautiful new colors.



B78A8E



EDA6AC



B79C8A



5C5353



9C000E



1C0002

Inverse Universe

The Inverse Universe completely reimagines the original color for something new.



B78A8E



EDA6AC



8AA5B7



5C5353



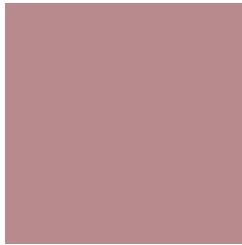
9C000E



1C0002

Previews

White Background



This preview shows how the Hex color B78A8E looks on a white background.

Color Contrast Check

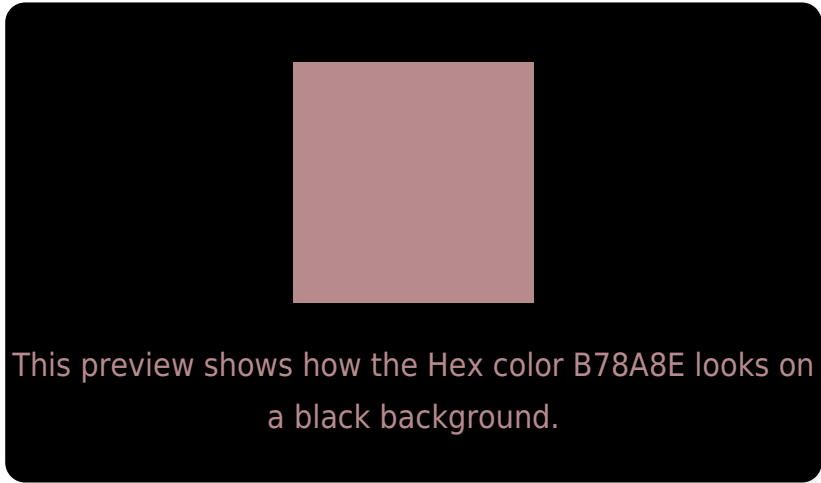
Large Text (above 18pt) WCAG AA × Fail

Any Text WCAG AA × Fail

Large Text (above 18pt) WCAG AAA × Fail

Any Text WCAG AAA × Fail

Black Background



Color Contrast Check

Large Text (above 18pt) WCAG AA ✓ Pass

Any Text WCAG AA ✓ Pass

Large Text (above 18pt) WCAG AAA ✓ Pass

Any Text WCAG AAA ✓ Pass

If you want to check with other color combinations, try the [Color Contrast Checker](#).

Hex B78A8E Background



This preview shows how black text looks on a background with the Hex color B78A8E.

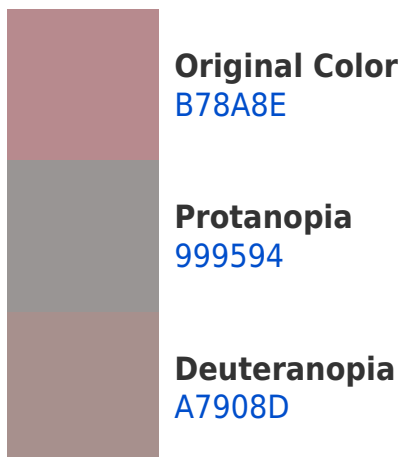


This preview shows how white text looks on a background with the Hex color B78A8E.

Color Blindness Simulation

Color vision deficiency is a very complex topic, and I could not describe the different causes any better than Wikipedia does, so if you want to learn more, you should check out their [article about color blindness](#).

Dichromacy





Tritanopia
B88994

Trichromacy



Original Color
B78A8E

Protanomaly
A49192

Deuteranomaly
AD8E8D

Tritanomaly
B88992

Monochromacy



Original Color
B78A8E

Achromatopsia
989898

Achromatomaly
A39394

CSS Examples

Text

The CSS property to change the color of the text to Hex B78A8E is called "color". The color property can be set on classes, ids or directly on the HTML element.

This example shows how text in the color #B78A8E looks like.

```
.text, #text, p{  
    color:#B78A8E  
}
```

If you want to add a text shadow in that color use the text-shadow property, you can generate a text shadow directly with our [CSS Text Shadow Generator](#).

Here you see how black text with a 4 pixel #B78A8E colored shadow looks like.

```
.shadow{ text-shadow: 4px 4px 2px #B78A8E
}
```

Border

The CSS property to change the border of an element to Hex B78A8E is called "border". The border property can be set on classes, ids or directly on the HTML element.

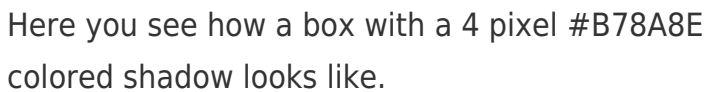
This example shows the color as border, it can be applied via the CSS property "border" or "border-color".

```
.border, #border, table{ border:4px solid
#B78A8E }
```

If only the border color should be changed use the property `border-color`.

```
.border{ border-color:#B78A8E }
```

If you want to add a box shadow in that color use:



Here you see how a box with a 4 pixel #B78A8E colored shadow looks like.

```
.boxshadow{ -moz-box-shadow:4px 4px 4px  
4px #B78A8E; -webkit-box-shadow:4px 4px  
4px 4px #B78A8E; box-shadow:4px 4px 4px  
4px #B78A8E }
```

Background

The CSS property to change the background color of an element to Hex B78A8E is called "background". The background property can be set on classes, ids or directly on the HTML element.

```
.background, #background, body{  
background:#B78A8E }
```

If only the background color should be changed can be used:

```
.background{ background-color:#B78A8E }
```

This example shows the color as background, it is applied via the CSS property "background".

To optimize and compress your CSS code, you can use our [online CSS compressor and optimizer](#) based on csstidy. If you want to create a linear or radial gradient as background or border, check our [CSS Gradient Generator](#).

Hey! You found this booklet interesting? Support Converting Colors with the new Membership Option!

The pro membership hides all ads, plus gives you double the colors in the color bucket, and more awesome pro features!

[Learn more, Memberships starting at \\$2.50/m!](#)

**Follow me
on Twitter!**

@ConvertingColor