

# Converting Colors

Hex(B78B93)

Have a look what the booklet for  
Hex(B78B93) contains.

<b>Hex(B78B93)</b> .....	3
<i><b>Conversions</b></i> .....	4
<i><b>Details</b></i> .....	6
<i><b>Harmonies</b></i> .....	11
<i><b>Previews</b></i> .....	23
<i><b>Color Blindness Simulation</b></i> .....	26
<i><b>CSS Examples</b></i> .....	29

# **Color**

**Hex(B78B93)**

# Conversions

## Conversions Part 1

Format	Color
Hex	B78B93
RGB	183, 139, 147
RGB Percent	72%, 55%, 58%
CMY	0.2824, 0.4549, 0.4235
CMYK	0.00, 0.24, 0.20, 0.28
HSL	349°, 23%, 63%
HSV	349°, 24%, 72%
XYZ	34.0275, 30.6391, 31.7243
YIQ	153.0680, 23.6560, 11.8160

# Conversions

## Conversions Part 2

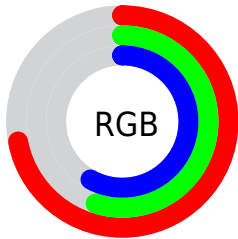
<b>Format</b>	<b>Color</b>
<a href="#">RYB</a>	<a href="#">183, 139, 147</a>
Decimal	<a href="#">12028819</a>
CIELab	<a href="#">62.20, 17.96, 2.24</a>
CIElCh	<a href="#">62, 18.095, 7.117</a>
Yxy	<a href="#">30.6391, 0.3530, 0.3179</a>
Android (android.graphics.Color)	<a href="#">4290218899 (0xFFB78B93)</a>
YUV	<a href="#">153.0680, -2.9915, 26.2504</a>
Hunter-Lab	<a href="#">55.3526, 12.8642, 4.7659</a>

# Details

The Hex color **B78B93** is a light color, and the websafe version is hex **CC9999**. A complement of this color would be **8BB7AF**, and the grayscale version is **999999**.

A 20% lighter version of the original color is **F0C1C9**, and **815961** is the 20% darker color. If you saturate the color by 10%, you get **B77984**, and if you desaturate by 10%, it is **B79DA2**.

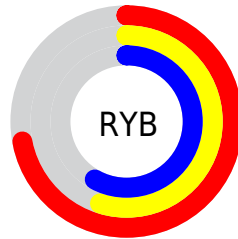
# Distribution



Red (72%)

Green (55%)

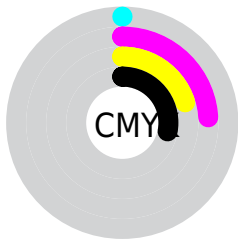
Blue (58%)



Red (72%)

Yellow (55%)

Blue (58%)

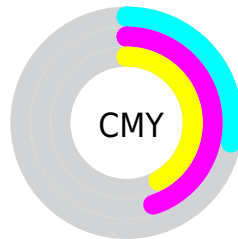


Cyan (0%)

Magenta (24%)

Yellow (20%)

Black (28%)



Cyan (28%)

Magenta (45%)

Yellow (42%)

# Brightness & Saturation Gradients

These gradients show how the Hex color B78B93 changes by changing the brightness by 10 percent. The first figure shows a shift by +10% for each color and the second figure -10%.

Similar to the brightness gradients but the following saturation gradients show a change of the Hex color B78B93 by changing the saturation by 10% instead.



 B78B93

 B78B93

FFFFFF

 9C7179

 F0C1C9

 815961

 FFDDE5

 684149

 FFF9FF

 4F2A32

 37151D

 240003

 000000

 B78B93

 B78B93

 B77984

 B79DA2

 B76675

 B7B0B1

 B75466

 B7C2C0

 B74257

 B7D4CF

 B72F48

 B7E7DE

 B71D39

 B7F9ED

 B70B2A

 B7FFFC

 B70021

 B7FFFF

# Harmonies

## Analogous

The Analogous color harmony consists of three colors that are next to each other on the color wheel.



AF8DA3



B78B93



B68D84

# Triad

The Triadic color harmony groups three colors that are evenly spaced from another and form a triangle on the color wheel.



B78B93



8D9B7C



759BB3

# Complementary

The Complementary color scheme is a pair of colors which are on the opposite of each other on the color wheel.



B78B93



8BB7AF

# Split Complementary

Split-complementary colors differ from the complementary color scheme. The scheme consists of three colors, the original color and two neighbors of the complement color.



6B9FA9



B78B93



7B9E89

# Square

The Square scheme is like the rectangle color scheme, but the four colors are evenly spaced on the color wheel.



B78B93



9F9677



6EA09A



8996B6

# Rectangle

The Rectangle color scheme consists of four colors that form a rectangle on the color wheel.



B78B93



B1907C



6EA09A



709DB1



# Sweetspot

The Sweet Spot groups the original color and five complimentary colors.



B78B93



EDDDE0



AF8BB7



786E70



F7F7F7



787878



# Same Dimension

The Same Dimension uses a secret algorithm to generate beautiful new colors.



B78B93



EDA8B5



B7998B



5C5354



9C001C



1C0005



# Inverse Universe

The Inverse Universe completely reimagines the original color for something new.



B78B93



EDA8B5



8BA9B7



5C5354



9C001C

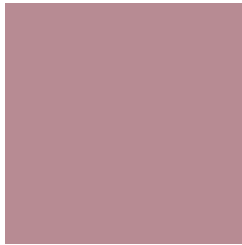


1C0005



# Previews

## White Background



This preview shows how the Hex color B78B93 looks on a white background.

## Color Contrast Check

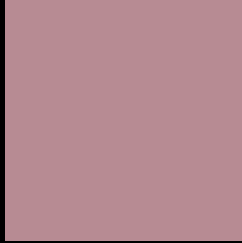
Large Text (above 18pt) WCAG AA × Fail

Any Text WCAG AA × Fail

Large Text (above 18pt) WCAG AAA × Fail

Any Text WCAG AAA × Fail

# Black Background



This preview shows how the Hex color B78B93 looks on a black background.

## Color Contrast Check

Large Text (above 18pt) WCAG AA ✓ Pass

Any Text WCAG AA ✓ Pass

Large Text (above 18pt) WCAG AAA ✓ Pass

Any Text WCAG AAA ✓ Pass

If you want to check with other color combinations, try the [Color Contrast Checker](#).



## Hex B78B93 Background



This preview shows how black text looks on a background with the Hex color B78B93.



This preview shows how white text looks on a background with the Hex color B78B93.

# Color Blindness Simulation

Color vision deficiency is a very complex topic, and I could not describe the different causes any better than Wikipedia does, so if you want to learn more, you should check out their [article about color blindness](#).

## Dichromacy



**Original Color**  
B78B93

**Protanopia**  
989699

**Deuteranopia**  
A79292



**Tritanopia**  
B78B95

# Trichromacy



**Original Color**  
B78B93

**Protanomaly**  
A39297

**Deuteranomaly**  
AD8F92

**Tritanomaly**  
B78B94

# Monochromacy



**Original Color**  
B78B93

**Achromatopsia**  
999999

**Achromatomaly**  
A49497

# CSS Examples

## Text

The CSS property to change the color of the text to Hex B78B93 is called "color". The color property can be set on classes, ids or directly on the HTML element.

This example shows how text in the color #B78B93 looks like.

```
.text, #text, p{  
    color:#B78B93  
}
```

If you want to add a text shadow in that color use the text-shadow property, you can generate a text shadow directly with our [CSS Text Shadow Generator](#).

Here you see how black text with a 4 pixel #B78B93 colored shadow looks like.

```
.shadow{ text-shadow: 4px 4px 2px #B78B93
}
```

## Border

The CSS property to change the border of an element to Hex B78B93 is called "border". The border property can be set on classes, ids or directly on the HTML element.

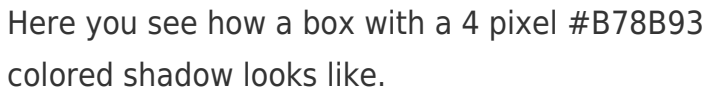
This example shows the color as border, it can be applied via the CSS property "border" or "border-color".

```
.border, #border, table{ border:4px solid
#B78B93 }
```

If only the border color should be changed use the property `border-color`.

```
.border{ border-color:#B78B93 }
```

If you want to add a box shadow in that color use:



Here you see how a box with a 4 pixel `#B78B93` colored shadow looks like.

```
.boxshadow{ -moz-box-shadow:4px 4px 4px  
4px #B78B93; -webkit-box-shadow:4px 4px  
4px 4px #B78B93; box-shadow:4px 4px 4px  
4px #B78B93 }
```

# Background

The CSS property to change the background color of an element to Hex B78B93 is called "background". The background property can be set on classes, ids or directly on the HTML element.

```
.background, #background, body{  
background:#B78B93 }
```

If only the background color should be changed can be used:

```
.background{ background-color:#B78B93 }
```

This example shows the color as background, it is applied via the CSS property "background".

To optimize and compress your CSS code, you can use our [online CSS compressor and optimizer](#) based on csstidy. If you want to create a linear or radial gradient as background or border, check our [CSS Gradient Generator](#).



Hey! You found this booklet interesting? Support Converting Colors with the new Membership Option!

The pro membership hides all ads, plus gives you double the colors in the color bucket, and more awesome pro features!

**[Learn more, Memberships starting at \\$2.50/m!](#)**

**Follow me  
on Twitter!**

@ConvertingColor