

Converting Colors

Hex(B79264)

Have a look what the booklet for
Hex(B79264) contains.

Hex(B79264)	3
<i>Conversions</i>	4
<i>Details</i>	6
<i>Harmonies</i>	11
<i>Previews</i>	23
<i>Color Blindness Simulation</i>	26
<i>CSS Examples</i>	29

Color

Hex(B79264)

Conversions

Conversions Part 1

Format	Color
Hex	B79264
RGB	183, 146, 100
RGB Percent	72%, 57%, 39%
CMY	0.2824, 0.4275, 0.6078
CMYK	0.00, 0.20, 0.45, 0.28
HSL	33°, 37%, 55%
HSV	33°, 45%, 72%
XYZ	32.1076, 31.5451, 16.4532
YIQ	151.8190, 36.8180, -6.4620

Conversions

Conversions Part 2

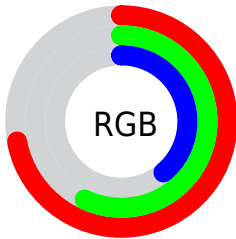
Format	Color
RYB	167, 183, 100
Decimal	12030564
CIELab	62.97, 7.86, 29.62
CIElCh	63, 30.644, 75.142
Yxy	31.5451, 0.4008, 0.3938
Android (android.graphics.Color)	4290220644 (0xFFB79264)
YUV	151.8190, -25.5468, 27.3457
Hunter-Lab	56.1651, 3.7532, 21.9470

Details

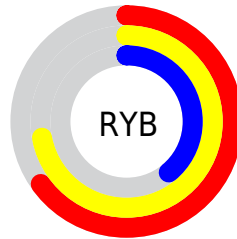
The Hex color **B79264** is a dark color, and the websafe version is hex **CC9966**. A complement of this color would be **6489B7**, and the grayscale version is **989898**.

A 20% lighter version of the original color is **F0C897**, and **806034** is the 20% darker color. If you saturate the color by 10%, you get **B78A52**, and if you desaturate by 10%, it is **B79A76**.

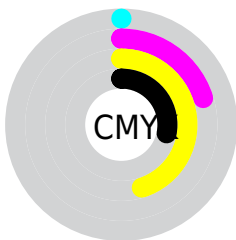
Distribution



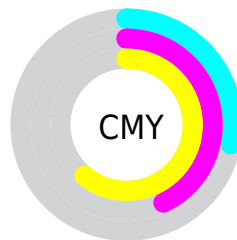
- Red (72%)
- Green (57%)
- Blue (39%)



- Red (65%)
- Yellow (72%)
- Blue (39%)



- Cyan (0%)
- Magenta (20%)
- Yellow (45%)
- Black (28%)



- Cyan (28%)
- Magenta (43%)
- Yellow (61%)

Brightness & Saturation Gradients

These gradients show how the Hex color B79264 changes by changing the brightness by 10 percent. The first figure shows a shift by +10% for each color and the second figure -10%.

Similar to the brightness gradients but the following saturation gradients show a change of the Hex color B79264 by changing the saturation by 10% instead.

 B79264

 B79264

FFFFFF

 9B784C

 F0C897

 806034

 FFE4B2

 66481E

 FFFFCE

 4C3206

 FFFFEA

 331D00

 1B0400

 000000

 B79264

 B79264

 B78A52

 B79A76

 B7823F

 B7A289

 B77A2D

 B7AA9B

 B7711B

 B7B3AD

 B76908

 B7BBC0

 B76500

 B7C3D2

 B7CBE4

 B7D3F6

 B7DBFF

Harmonies

Analogous

The Analogous color harmony consists of three colors that are next to each other on the color wheel.



C98973



B79264



9D9B63

Triad

The Triadic color harmony groups three colors that are evenly spaced from another and form a triangle on the color wheel.



B79264



40A7A6



AD8CBF

Complementary

The Complementary color scheme is a pair of colors which are on the opposite of each other on the color wheel.



B79264



6489B7

Split Complementary

Split-complementary colors differ from the complementary color scheme. The scheme consists of three colors, the original color and two neighbors of the complement color.



8896CD



B79264



3DA5BE

Square

The Square scheme is like the rectangle color scheme, but the four colors are evenly spaced on the color wheel.



B79264



5EA689



5E9FCC



C585A7

Rectangle

The Rectangle color scheme consists of four colors that form a rectangle on the color wheel.



B79264



89A06B



5E9FCC



A290C5

Sweetspot

The Sweet Spot groups the original color and five complimentary colors.



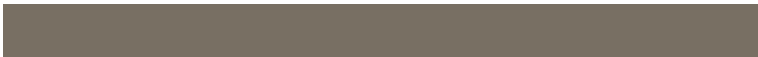
B79264



EDDECC



B76489



786F63



F7F7F7



787878

Same Dimension

The Same Dimension uses a secret algorithm to generate beautiful new colors.



B79264



EDB46D



B3B764



5C5853



9C5600



1C1000

Inverse Universe

The Inverse Universe completely reimagines the original color for something new.



6489B7



6DA6ED



6864B7



53575C



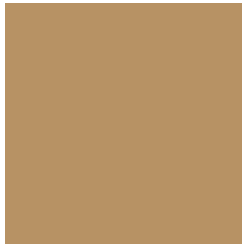
00459C



000D1C

Previews

White Background



This preview shows how the Hex color B79264 looks on a white background.

Color Contrast Check

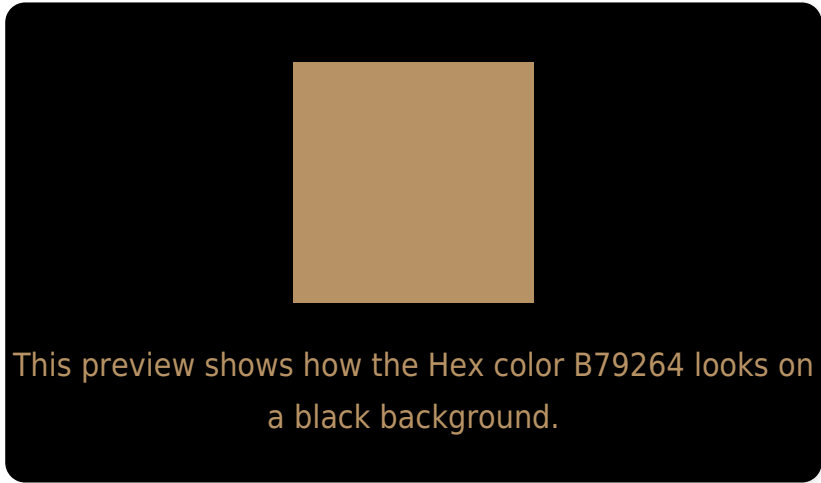
Large Text (above 18pt) WCAG AA × Fail

Any Text WCAG AA × Fail

Large Text (above 18pt) WCAG AAA × Fail

Any Text WCAG AAA × Fail

Black Background



Color Contrast Check

Large Text (above 18pt) WCAG AA ✓ Pass

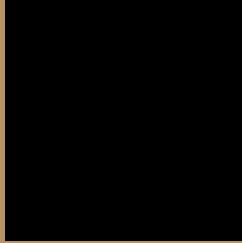
Any Text WCAG AA ✓ Pass

Large Text (above 18pt) WCAG AAA ✓ Pass

Any Text WCAG AAA ✓ Pass

If you want to check with other color combinations, try the [Color Contrast Checker](#).

Hex B79264 Background



This preview shows how black text looks on a background with the Hex color B79264.



This preview shows how white text looks on a background with the Hex color B79264.

Color Blindness Simulation

Color vision deficiency is a very complex topic, and I could not describe the different causes any better than Wikipedia does, so if you want to learn more, you should check out their [article about color blindness](#).

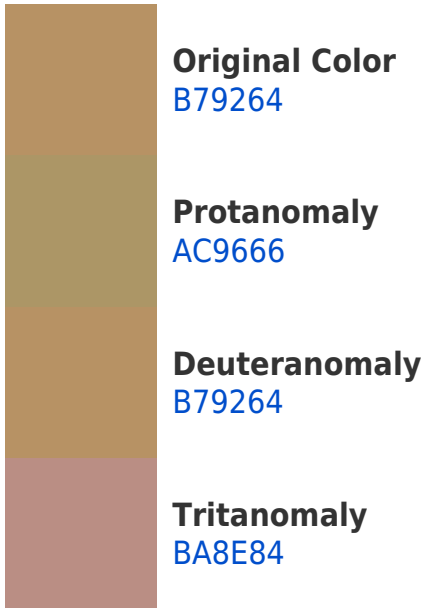
Dichromacy



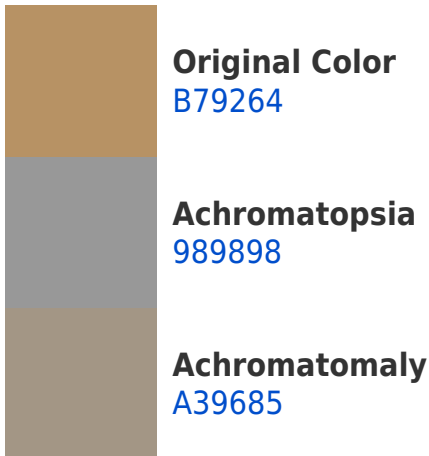


Tritanopia
BC8C96

Trichromacy



Monochromacy



CSS Examples

Text

The CSS property to change the color of the text to Hex B79264 is called "color". The color property can be set on classes, ids or directly on the HTML element.

This example shows how text in the color #B79264 looks like.

```
.text, #text, p{  
    color:#B79264  
}
```

If you want to add a text shadow in that color use the text-shadow property, you can generate a text shadow directly with our [CSS Text Shadow Generator](#).

Here you see how black text with a 4 pixel #B79264 colored shadow looks like.

```
.shadow{ text-shadow: 4px 4px 2px #B79264
}
```

Border

The CSS property to change the border of an element to Hex B79264 is called "border". The border property can be set on classes, ids or directly on the HTML element.

This example shows the color as border, it can be applied via the CSS property "border" or "border-color".

```
.border, #border, table{ border:4px solid
#B79264 }
```

If only the border color should be changed use the property `border-color`.

```
.border{ border-color:#B79264 }
```

If you want to add a box shadow in that color use:

Here you see how a box with a 4 pixel #B79264 colored shadow looks like.

```
.boxshadow{ -moz-box-shadow:4px 4px 4px  
4px #B79264; -webkit-box-shadow:4px 4px  
4px 4px #B79264; box-shadow:4px 4px 4px  
4px #B79264 }
```

Background

The CSS property to change the background color of an element to Hex B79264 is called "background". The background property can be set on classes, ids or directly on the HTML element.

```
.background, #background, body{  
background:#B79264 }
```

If only the background color should be changed can be used:

```
.background{ background-color:#B79264 }
```

This example shows the color as background, it is applied via the CSS property "background".

To optimize and compress your CSS code, you can use our [online CSS compressor and optimizer](#) based on csstidy. If you want to create a linear or radial gradient as background or border, check our [CSS Gradient Generator](#).

Hey! You found this booklet interesting? Support Converting Colors with the new Membership Option!

The pro membership hides all ads, plus gives you double the colors in the color bucket, and more awesome pro features!

[Learn more, Memberships starting at \\$2.50/m!](#)

**Follow me
on Twitter!**

@ConvertingColor