

Converting Colors

Hex(B79298)

Have a look what the booklet for
Hex(B79298) contains.

| | |
|--|----|
| Hex(B79298) | 3 |
| <i>Conversions</i> | 4 |
| <i>Details</i> | 6 |
| <i>Harmonies</i> | 11 |
| <i>Previews</i> | 23 |
| <i>Color Blindness Simulation</i> | 26 |
| <i>CSS Examples</i> | 29 |

Color

Hex(B79298)

Conversions

Conversions Part 1

| Format | Color |
|-------------|---|
| Hex | B79298 |
| RGB | 183, 146, 152 |
| RGB Percent | 72%, 57%, 60% |
| CMY | 0.2824, 0.4275, 0.4039 |
| CMYK | 0.00, 0.20, 0.17, 0.28 |
| HSL | 350°, 20%, 65% |
| HSV | 350°, 20%, 72% |
| XYZ | 35.4748, 32.8920, 34.1848 |
| YIQ | 157.7470, 20.1260, 9.7100 |

Conversions

Conversions Part 2

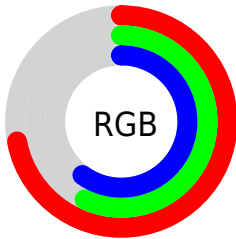
| Format | Color |
|-------------------------------------|--|
| RYB | 183, 146, 152 |
| Decimal | 12030616 |
| CIELab | 64.07, 14.85, 2.13 |
| CIElCh | 64, 15.003, 8.146 |
| Yxy | 32.8920, 0.3459, 0.3207 |
| Android (android.graphics.Color) | 4290220696 (0xFFB79298) |
| YUV | 157.7470, -2.8333, 22.1469 |
| Hunter-Lab | 57.3516, 10.0459, 4.8059 |

Details

The Hex color **B79298** is a light color, and the websafe version is hex **CC9999**. A complement of this color would be **92B7B1**, and the grayscale version is **9E9E9E**.

A 20% lighter version of the original color is **EFC8CE**, and **815F65** is the 20% darker color. If you saturate the color by 10%, you get **B78089**, and if you desaturate by 10%, it is **B7A4A7**.

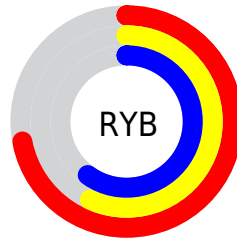
Distribution



Red (72%)

Green (57%)

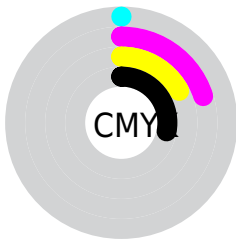
Blue (60%)



Red (72%)

Yellow (57%)

Blue (60%)

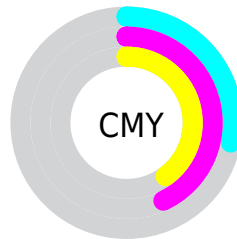


Cyan (0%)

Magenta (20%)

Yellow (17%)

Black (28%)



Cyan (28%)

Magenta (43%)

Yellow (40%)

Brightness & Saturation Gradients

These gradients show how the Hex color B79298 changes by changing the brightness by 10 percent. The first figure shows a shift by +10% for each color and the second figure -10%.

Similar to the brightness gradients but the following saturation gradients show a change of the Hex color B79298 by changing the saturation by 10% instead.

 B79298

 B79298

FFFFFF

 9C787E

 EFC8CE

 815F65

 FFE4EA

 68474D

 4F3137

 381B21

 23030A

 000000

 B79298

 B79298

 B78089

 B7A4A7

 B76D79

 B7B7B7

 B75B6A

 B7C9C6

 B7495B

 B7DBD5

 B7374B

 B7EEE5

 B7243C

 B7FFF4

 B7122D

 B7FFFF

 B7001E

Harmonies

Analogous

The Analogous color harmony consists of three colors that are next to each other on the color wheel.



B093A6



B79298



B6948B

Triad

The Triadic color harmony groups three colors that are evenly spaced from another and form a triangle on the color wheel.



B79298



93A086



819FB4

Complementary

The Complementary color scheme is a pair of colors which are on the opposite of each other on the color wheel.



B79298



92B7B1

Split Complementary

Split-complementary colors differ from the complementary color scheme. The scheme consists of three colors, the original color and two neighbors of the complement color.



79A2AB



B79298



84A291

Square

The Square scheme is like the rectangle color scheme, but the four colors are evenly spaced on the color wheel.



B79298



A29C81



7AA39F



919BB6

Rectangle

The Rectangle color scheme consists of four colors that form a rectangle on the color wheel.



B79298



B29685



7AA39F



7DA0B2

Sweetspot

The Sweet Spot groups the original color and five complimentary colors.



B79298



EDDFE1



B192B7



786F71



F7F7F7



787878

Same Dimension

The Same Dimension uses a secret algorithm to generate beautiful new colors.



B79298



EDB4BD



B79E92



5C5354



9C0019



1C0005

Inverse Universe

The Inverse Universe completely reimagines the original color for something new.



B79298



EDB4BD



92ABB7



5C5354



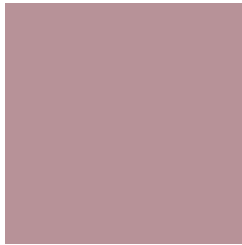
9C0019



1C0005

Previews

White Background



This preview shows how the Hex color B79298 looks on a white background.

Color Contrast Check

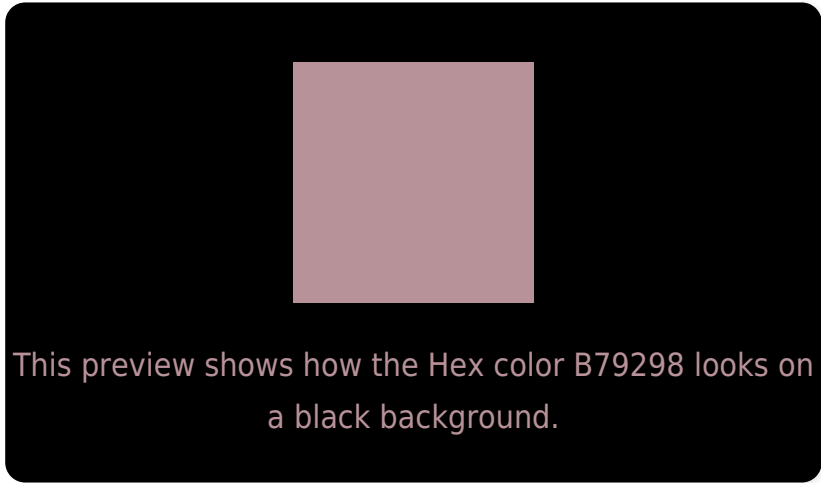
Large Text (above 18pt) WCAG AA × Fail

Any Text WCAG AA × Fail

Large Text (above 18pt) WCAG AAA × Fail

Any Text WCAG AAA × Fail

Black Background



Color Contrast Check

Large Text (above 18pt) WCAG AA ✓ Pass

Any Text WCAG AA ✓ Pass

Large Text (above 18pt) WCAG AAA ✓ Pass

Any Text WCAG AAA ✓ Pass

If you want to check with other color combinations, try the [Color Contrast Checker](#).

Hex B79298 Background



This preview shows how black text looks on a background with the Hex color B79298.




This preview shows how white text looks on a background with the Hex color B79298.

Color Blindness Simulation

Color vision deficiency is a very complex topic, and I could not describe the different causes any better than Wikipedia does, so if you want to learn more, you should check out their [article about color blindness](#).

Dichromacy





Tritanopia
B8919D

Trichromacy



Original Color

B79298

Protanomaly

A7989B

Deuteranomaly

B09597

Tritanomaly

B8919B

Monochromacy



Original Color

B79298

Achromatopsia

9E9E9E

Achromatomaly

A79A9C

CSS Examples

Text

The CSS property to change the color of the text to Hex B79298 is called "color". The color property can be set on classes, ids or directly on the HTML element.

This example shows how text in the color #B79298 looks like.

```
.text, #text, p{  
    color:#B79298  
}
```

If you want to add a text shadow in that color use the text-shadow property, you can generate a text shadow directly with our [CSS Text Shadow Generator](#).

Here you see how black text with a 4 pixel #B79298 colored shadow looks like.

```
.shadow{ text-shadow: 4px 4px 2px #B79298
}
```

Border

The CSS property to change the border of an element to Hex B79298 is called "border". The border property can be set on classes, ids or directly on the HTML element.

This example shows the color as border, it can be applied via the CSS property "border" or "border-color".

```
.border, #border, table{ border:4px solid
#B79298 }
```

If only the border color should be changed use the property `border-color`.

```
.border{ border-color:#B79298 }
```

If you want to add a box shadow in that color use:

Here you see how a box with a 4 pixel #B79298 colored shadow looks like.

```
.boxshadow{ -moz-box-shadow:4px 4px 4px  
4px #B79298; -webkit-box-shadow:4px 4px  
4px 4px #B79298; box-shadow:4px 4px 4px  
4px #B79298 }
```

Background

The CSS property to change the background color of an element to Hex B79298 is called "background". The background property can be set on classes, ids or directly on the HTML element.

```
.background, #background, body{  
background:#B79298 }
```

If only the background color should be changed can be used:

```
.background{ background-color:#B79298 }
```

This example shows the color as background, it is applied via the CSS property "background".

To optimize and compress your CSS code, you can use our [online CSS compressor and optimizer](#) based on csstidy. If you want to create a linear or radial gradient as background or border, check our [CSS Gradient Generator](#).

Hey! You found this booklet interesting? Support Converting Colors with the new Membership Option!

The pro membership hides all ads, plus gives you double the colors in the color bucket, and more awesome pro features!

[Learn more, Memberships starting at \\$2.50/m!](#)

**Follow me
on Twitter!**

@ConvertingColor