

# Converting Colors

Hex(B7959C)

Have a look what the booklet for  
Hex(B7959C) contains.

<b>Hex(B7959C)</b> .....	3
<i><b>Conversions</b></i> .....	4
<i><b>Details</b></i> .....	6
<i><b>Harmonies</b></i> .....	11
<i><b>Previews</b></i> .....	23
<i><b>Color Blindness Simulation</b></i> .....	26
<i><b>CSS Examples</b></i> .....	29

# **Color**

**Hex(B7959C)**

# Conversions

## Conversions Part 1

<b>Format</b>	<b>Color</b>
Hex	B7959C
RGB	183, 149, 156
RGB Percent	72%, 58%, 61%
CMY	0.2824, 0.4157, 0.3882
CMYK	0.00, 0.19, 0.15, 0.28
HSL	348°, 19%, 65%
HSV	348°, 19%, 72%
XYZ	36.2766, 33.9625, 36.0959
YIQ	159.9640, 18.0170, 9.3850

# Conversions

## Conversions Part 2

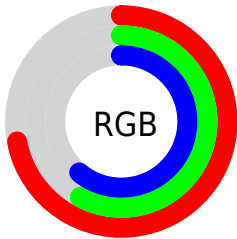
<b>Format</b>	<b>Color</b>
<a href="#">RYB</a>	<a href="#">183, 149, 156</a>
Decimal	<a href="#">12031388</a>
CIELab	<a href="#">64.93, 13.84, 1.12</a>
CIELCh	<a href="#">65, 13.885, 4.627</a>
Yxy	<a href="#">33.9625, 0.3412, 0.3194</a>
Android (android.graphics.Color)	<a href="#">4290221468</a> ( <a href="#">0xFFB7959C</a> )
YUV	<a href="#">159.9640, -1.9543, 20.2026</a>
Hunter-Lab	<a href="#">58.2773, 9.1279, 4.0710</a>

# Details

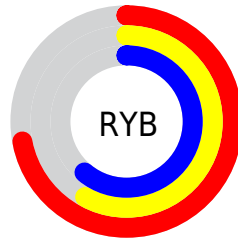
The Hex color **B7959C** is a light color, and the websafe version is hex **CC9999**. A complement of this color would be **95B7B0**, and the grayscale version is **A0A0A0**.

A 20% lighter version of the original color is **EFCBD2**, and **826269** is the 20% darker color. If you saturate the color by 10%, you get **B7838D**, and if you desaturate by 10%, it is **B7A7AB**.

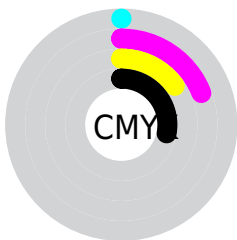
# Distribution



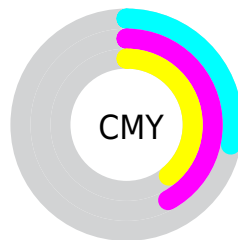
- Red (72%)
- Green (58%)
- Blue (61%)



- Red (72%)
- Yellow (58%)
- Blue (61%)



- Cyan (0%)
- Magenta (19%)
- Yellow (15%)
- Black (28%)



- Cyan (28%)
- Magenta (42%)
- Yellow (39%)

# Brightness & Saturation Gradients

These gradients show how the Hex color B7959C changes by changing the brightness by 10 percent. The first figure shows a shift by +10% for each color and the second figure -10%.

Similar to the brightness gradients but the following saturation gradients show a change of the Hex color B7959C by changing the saturation by 10% instead.



 B7959C

 B7959C

FFFFFF

 9C7B82

 EFCBD2

 826269

 FFE7EF

 684A51

 50333A

 381E24

 23070F

 000000

 B7959C

 B7959C

 B7838D

 B7A7AB

 B7707F

 B7BAB9

 B75E70

 B7CCC8

 B74C62

 B7DED6

 B73A53

 B7F1E5

 B72745

 B7FFF3

 B71536

 B7FFFF

 B70328

 B70026

# Harmonies

## Analogous

The Analogous color harmony consists of three colors that are next to each other on the color wheel.



B096A8



B7959C



B79690

# Triad

The Triadic color harmony groups three colors that are evenly spaced from another and form a triangle on the color wheel.



B7959C



98A189



85A2B4

# Complementary

The Complementary color scheme is a pair of colors which are on the opposite of each other on the color wheel.



B7959C



95B7B0

# Split Complementary

Split-complementary colors differ from the complementary color scheme. The scheme consists of three colors, the original color and two neighbors of the complement color.



7EA4AB



B7959C



8AA493

# Square

The Square scheme is like the rectangle color scheme, but the four colors are evenly spaced on the color wheel.



B7959C



A69D85



80A59F



929EB6

# Rectangle

The Rectangle color scheme consists of four colors that form a rectangle on the color wheel.



B7959C



B4988A



80A59F



81A3B1



# Sweetspot

The Sweet Spot groups the original color and five complimentary colors.



B7959C



EDDFE2



B095B7



786F71



F7F7F7



787878



# Same Dimension

The Same Dimension uses a secret algorithm to generate beautiful new colors.



B7959C



EDB9C4



B79F95



5C5355



9C0020



1C0006



# Inverse Universe

The Inverse Universe completely reimagines the original color for something new.



B7959C



EDB9C4



95ADB7



5C5355



9C0020

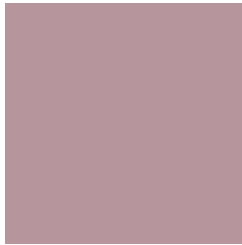


1C0006



# Previews

## White Background



This preview shows how the Hex color B7959C looks on a white background.

## Color Contrast Check

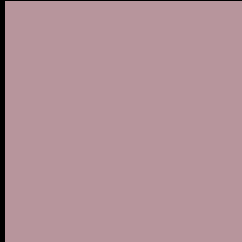
Large Text (above 18pt) WCAG AA × Fail

Any Text WCAG AA × Fail

Large Text (above 18pt) WCAG AAA × Fail

Any Text WCAG AAA × Fail

# Black Background



This preview shows how the Hex color B7959C looks on a black background.

## Color Contrast Check

Large Text (above 18pt) WCAG AA ✓ Pass

Any Text WCAG AA ✓ Pass

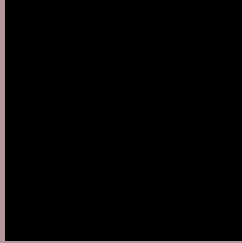
Large Text (above 18pt) WCAG AAA ✓ Pass

Any Text WCAG AAA ✓ Pass

If you want to check with other color combinations, try the [Color Contrast Checker](#).



## Hex B7959C Background



This preview shows how black text looks on a background with the Hex color B7959C.

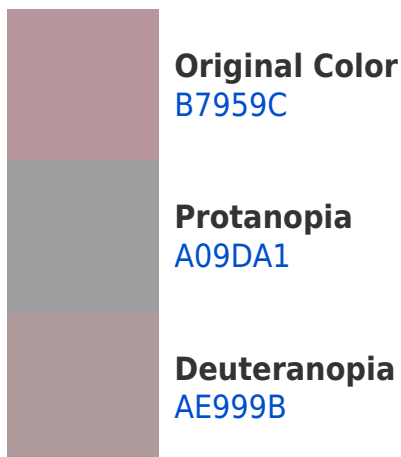


This preview shows how white text looks on a background with the Hex color B7959C.

# Color Blindness Simulation

Color vision deficiency is a very complex topic, and I could not describe the different causes any better than Wikipedia does, so if you want to learn more, you should check out their [article about color blindness](#).

## Dichromacy





**Tritanopia**  
B794A0

# Trichromacy



**Original Color**  
B7959C

**Protanomaly**  
A89A9F

**Deuteranomaly**  
B1989B

**Tritanomaly**  
B7949F

# Monochromacy



**Original Color**  
B7959C

**Achromatopsia**  
A0A0A0

**Achromatomaly**  
A89C9F

# CSS Examples

## Text

The CSS property to change the color of the text to Hex B7959C is called "color". The color property can be set on classes, ids or directly on the HTML element.

This example shows how text in the color #B7959C looks like.

```
.text, #text, p{  
    color:#B7959C  
}
```

If you want to add a text shadow in that color use the text-shadow property, you can generate a text shadow directly with our [CSS Text Shadow Generator](#).

Here you see how black text with a 4 pixel #B7959C colored shadow looks like.

```
.shadow{ text-shadow: 4px 4px 2px #B7959C
}
```

## Border

The CSS property to change the border of an element to Hex B7959C is called "border". The border property can be set on classes, ids or directly on the HTML element.

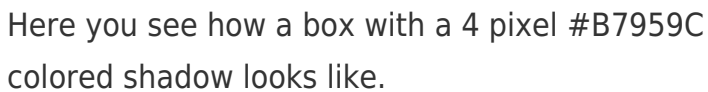
This example shows the color as border, it can be applied via the CSS property "border" or "border-color".

```
.border, #border, table{ border:4px solid
#B7959C }
```

If only the border color should be changed use the property `border-color`.

```
.border{ border-color:#B7959C }
```

If you want to add a box shadow in that color use:



Here you see how a box with a 4 pixel #B7959C colored shadow looks like.

```
.boxshadow{ -moz-box-shadow:4px 4px 4px  
4px #B7959C; -webkit-box-shadow:4px 4px  
4px 4px #B7959C; box-shadow:4px 4px 4px  
4px #B7959C }
```

# Background

The CSS property to change the background color of an element to Hex B7959C is called "background". The background property can be set on classes, ids or directly on the HTML element.

```
.background, #background, body{  
background:#B7959C }
```

If only the background color should be changed can be used:

```
.background{ background-color:#B7959C }
```

This example shows the color as background, it is applied via the CSS property "background".

To optimize and compress your CSS code, you can use our [online CSS compressor and optimizer](#) based on csstidy. If you want to create a linear or radial gradient as background or border, check our [CSS Gradient Generator](#).



Hey! You found this booklet interesting? Support Converting Colors with the new Membership Option!

The pro membership hides all ads, plus gives you double the colors in the color bucket, and more awesome pro features!

**[Learn more, Memberships starting at \\$2.50/m!](#)**

**Follow me  
on Twitter!**

@ConvertingColor