

Converting Colors

Hex(B7A0A6)

Have a look what the booklet for
Hex(B7A0A6) contains.

Hex(B7A0A6)	3
<i>Conversions</i>	4
<i>Details</i>	6
<i>Harmonies</i>	11
<i>Previews</i>	23
<i>Color Blindness Simulation</i>	26
<i>CSS Examples</i>	29

Color

Hex(B7A0A6)

Conversions

Conversions Part 1

Format	Color
Hex	B7A0A6
RGB	183, 160, 166
RGB Percent	72%, 63%, 65%
CMY	0.2824, 0.3725, 0.3490
CMYK	0.00, 0.13, 0.09, 0.28
HSL	344°, 14%, 67%
HSV	344°, 13%, 72%
XYZ	38.9822, 37.9621, 41.3492
YIQ	167.5610, 11.7820, 6.7420

Conversions

Conversions Part 2

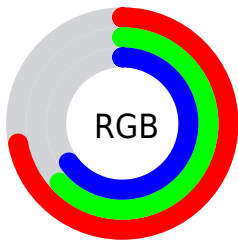
Format	Color
RYB	183, 160, 166
Decimal	12034214
CIELab	67.99, 9.45, -0.02
CIElCh	68, 9.452, 359.894
Yxy	37.9621, 0.3295, 0.3209
Android (android.graphics.Color)	4290224294 (0xFFB7A0A6)
YUV	167.5610, -0.7696, 13.5400
Hunter-Lab	61.6134, 5.1118, 3.3394

Details

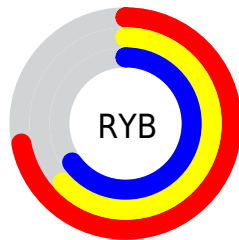
The Hex color **B7A0A6** is a light color, and the websafe version is hex **999999**. A complement of this color would be **A0B7B1**, and the grayscale version is **A8A8A8**.

A 20% lighter version of the original color is **EFD7DD**, and **826D72** is the 20% darker color. If you saturate the color by 10%, you get **B78E98**, and if you desaturate by 10%, it is **B7B2B4**.

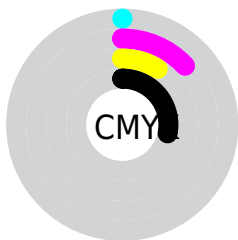
Distribution



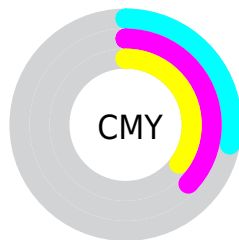
- Red (72%)
- Green (63%)
- Blue (65%)



- Red (72%)
- Yellow (63%)
- Blue (65%)



- Cyan (0%)
- Magenta (13%)
- Yellow (9%)
- Black (28%)



- Cyan (28%)
- Magenta (37%)
- Yellow (35%)

Brightness & Saturation Gradients

These gradients show how the Hex color B7A0A6 changes by changing the brightness by 10 percent. The first figure shows a shift by +10% for each color and the second figure -10%.

Similar to the brightness gradients but the following saturation gradients show a change of the Hex color B7A0A6 by changing the saturation by 10% instead.



B7A0A6



B7A0A6

FFFFFF



9C868C



EFD7DD



826D72



FFF3FA



69545A



503D42



39272C



231318



020000



000000



B7A0A6



B7A0A6

 B78E98

 B7B2B4

 B77B8B

 B7C5C1

 B7697D

 B7D7CF

 B75770

 B7E9DC

 B74562

 B7FCEA

 B73255

 B7FFF7

 B72047

 B7FFFF

 B70E3A

 B70030

Harmonies

Analogous

The Analogous color harmony consists of three colors that are next to each other on the color wheel.



B1A1AE



B7A0A6



B8A09E

Triad

The Triadic color harmony groups three colors that are evenly spaced from another and form a triangle on the color wheel.



B7A0A6



A3A897



94A9B4

Complementary

The Complementary color scheme is a pair of colors which are on the opposite of each other on the color wheel.



B7A0A6



A0B7B1

Split Complementary

Split-complementary colors differ from the complementary color scheme. The scheme consists of three colors, the original color and two neighbors of the complement color.



91AAAE



B7A0A6



9AAA9D

Square

The Square scheme is like the rectangle color scheme, but the four colors are evenly spaced on the color wheel.



B7A0A6



ADA595



93ABA5



9DA6B7

Rectangle

The Rectangle color scheme consists of four colors that form a rectangle on the color wheel.



B7A0A6



B6A299



93ABA5



92AAB2

Sweetspot

The Sweet Spot groups the original color and five complimentary colors.



B7A0A6



EDE4E6



B1A0B7



787273



F7F7F7



787878

Same Dimension

The Same Dimension uses a secret algorithm to generate beautiful new colors.



B7A0A6



EDCAD3



B7A5A0



5C5355



9C0029



1C0007

Inverse Universe

The Inverse Universe completely reimagines the original color for something new.



B7A0A6



EDCAD3



A0B2B7



5C5355



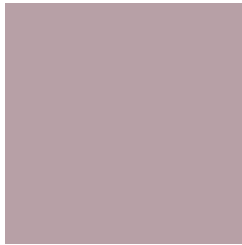
9C0029



1C0007

Previews

White Background



This preview shows how the Hex color B7A0A6 looks on a white background.

Color Contrast Check

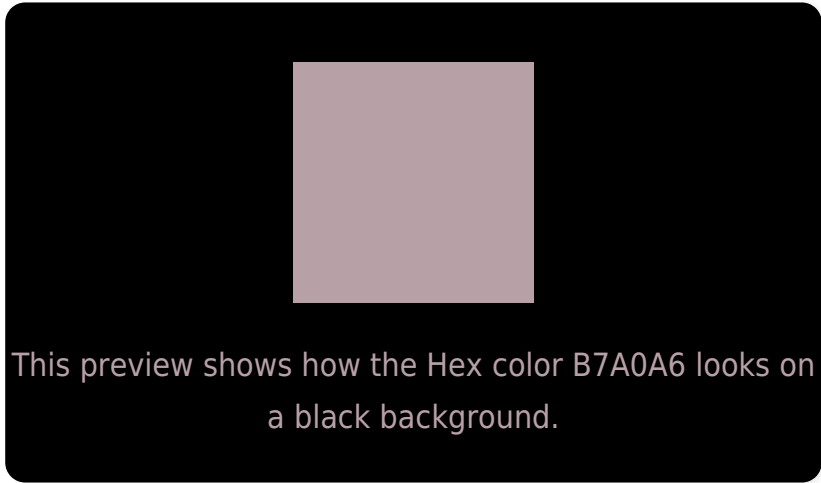
Large Text (above 18pt) WCAG AA × Fail

Any Text WCAG AA × Fail

Large Text (above 18pt) WCAG AAA × Fail

Any Text WCAG AAA × Fail

Black Background



Color Contrast Check

Large Text (above 18pt) WCAG AA ✓ Pass

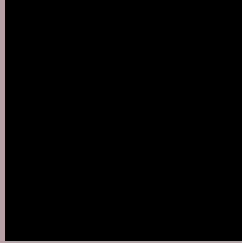
Any Text WCAG AA ✓ Pass

Large Text (above 18pt) WCAG AAA ✓ Pass

Any Text WCAG AAA ✓ Pass

If you want to check with other color combinations, try the [Color Contrast Checker](#).

Hex B7A0A6 Background



This preview shows how black text looks on a background with the Hex color B7A0A6.



This preview shows how white text looks on a background with the Hex color B7A0A6.

Color Blindness Simulation

Color vision deficiency is a very complex topic, and I could not describe the different causes any better than Wikipedia does, so if you want to learn more, you should check out their [article about color blindness](#).

Dichromacy



Original Color
B7A0A6

Protanopia
A8A5A9

Deuteranopia
B6A1A6



Tritanopia
B89FAC

Trichromacy



Original Color
B7A0A6

Protanomaly
ADA3A8

Deuteranomaly
B6A1A6

Tritanomaly
B89FAA

Monochromacy



Original Color
B7A0A6

Achromatopsia
A8A8A8

Achromatomaly
ADA5A7

CSS Examples

Text

The CSS property to change the color of the text to Hex B7A0A6 is called "color". The color property can be set on classes, ids or directly on the HTML element.

This example shows how text in the color #B7A0A6 looks like.

```
.text, #text, p{  
    color:#B7A0A6  
}
```

If you want to add a text shadow in that color use the text-shadow property, you can generate a text shadow directly with our [CSS Text Shadow Generator](#).

Here you see how black text with a 4 pixel #B7A0A6 colored shadow looks like.

```
.shadow{ text-shadow: 4px 4px 2px #B7A0A6
}
```

Border

The CSS property to change the border of an element to Hex B7A0A6 is called "border". The border property can be set on classes, ids or directly on the HTML element.

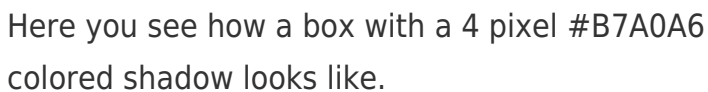
This example shows the color as border, it can be applied via the CSS property "border" or "border-color".

```
.border, #border, table{ border:4px solid
#B7A0A6 }
```

If only the border color should be changed use the property `border-color`.

```
.border{ border-color:#B7A0A6 }
```

If you want to add a box shadow in that color use:



Here you see how a box with a 4 pixel #B7A0A6 colored shadow looks like.

```
.boxshadow{ -moz-box-shadow:4px 4px 4px  
4px #B7A0A6; -webkit-box-shadow:4px 4px  
4px 4px #B7A0A6; box-shadow:4px 4px 4px  
4px #B7A0A6 }
```

Background

The CSS property to change the background color of an element to Hex B7A0A6 is called "background". The background property can be set on classes, ids or directly on the HTML element.

```
.background, #background, body{  
background:#B7A0A6 }
```

If only the background color should be changed can be used:

```
.background{ background-color:#B7A0A6 }
```

This example shows the color as background, it is applied via the CSS property "background".

To optimize and compress your CSS code, you can use our [online CSS compressor and optimizer](#) based on csstidy. If you want to create a linear or radial gradient as background or border, check our [CSS Gradient Generator](#).

Hey! You found this booklet interesting? Support Converting Colors with the new Membership Option!

The pro membership hides all ads, plus gives you double the colors in the color bucket, and more awesome pro features!

[Learn more, Memberships starting at \\$2.50/m!](#)

**Follow me
on Twitter!**

@ConvertingColor