

Converting Colors

Hex(B7A1B9)

Have a look what the booklet for
Hex(B7A1B9) contains.

Hex(B7A1B9)	3
<i>Conversions</i>	4
<i>Details</i>	6
<i>Harmonies</i>	11
<i>Previews</i>	23
<i>Color Blindness Simulation</i>	26
<i>CSS Examples</i>	29

Color

Hex(B7A1B9)

Conversions

Conversions Part 1

Format	Color
Hex	B7A1B9
RGB	183, 161, 185
RGB Percent	72%, 63%, 73%
CMY	0.2824, 0.3686, 0.2745
CMYK	0.01, 0.13, 0.00, 0.27
HSL	295°, 15%, 68%
HSV	295°, 13%, 73%
XYZ	41.0303, 39.0598, 51.2757
YIQ	170.3140, 5.4080, 12.1280

Conversions

Conversions Part 2

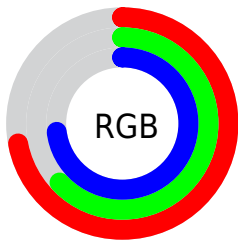
Format	Color
RYB	183, 161, 185
Decimal	12034489
CIELab	68.79, 12.39, -9.40
CIELCh	69, 15.555, 322.802
Yxy	39.0598, 0.3123, 0.2973
Android (android.graphics.Color)	4290224569 (0xFFB7A1B9)
YUV	170.3140, 7.2402, 11.1256
Hunter-Lab	62.4978, 7.8153, -4.8954

Details

The Hex color **B7A1B9** is a light color, and the websafe version is hex **999999**. A complement of this color would be **A3B9A1**, and the grayscale version is **AAAAAA**.

A 20% lighter version of the original color is **EFD8F1**, and **826D84** is the 20% darker color. If you saturate the color by 10%, you get **B58FB9**, and if you desaturate by 10%, it is **B9B3B9**.

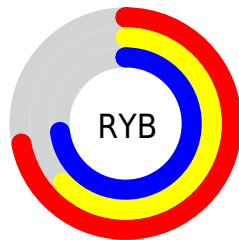
Distribution



Red (72%)

Green (63%)

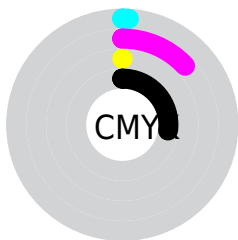
Blue (73%)



Red (72%)

Yellow (63%)

Blue (73%)

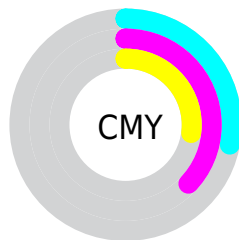


Cyan (1%)

Magenta (13%)

Yellow (0%)

Black (27%)



Cyan (28%)

Magenta (37%)

Yellow (27%)

Brightness & Saturation Gradients

These gradients show how the Hex color B7A1B9 changes by changing the brightness by 10 percent. The first figure shows a shift by +10% for each color and the second figure -10%.

Similar to the brightness gradients but the following saturation gradients show a change of the Hex color B7A1B9 by changing the saturation by 10% instead.

 B7A1B9

 B7A1B9

FFFFFF

 9C879E

 EFD8F1

 826D84

 FFF4FF

 69556B

 503E53

 39283B

 231326

 0A0011

 000000

 B7A1B9

 B7A1B9

 B58FB9

 B9B3B9

 B47CB9

 BAC6B9

 B26AB9

 BCD9B9

 B157B9

 BDEBB9

 AF45B9

 BFFDB9

 AE32B9

 C0FFB9

 AC20B9

 C2FFB9

 AB0DB9

 C3FFB9

 AA00B9

 C5FFB9

Harmonies

Analogous

The Analogous color harmony consists of three colors that are next to each other on the color wheel.



A6A5C2



B7A1B9



C29EAC

Triad

The Triadic color harmony groups three colors that are evenly spaced from another and form a triangle on the color wheel.



B7A1B9



B6A68C



83B0B2

Complementary

The Complementary color scheme is a pair of colors which are on the opposite of each other on the color wheel.



B7A1B9



A3B9A1

Split Complementary

Split-complementary colors differ from the complementary color scheme. The scheme consists of three colors, the original color and two neighbors of the complement color.



8AB0A4



B7A1B9



A7AA8E

Square

The Square scheme is like the rectangle color scheme, but the four colors are evenly spaced on the color wheel.



B7A1B9



C1A192



97AE96



87AEBE

Rectangle

The Rectangle color scheme consists of four colors that form a rectangle on the color wheel.



B7A1B9



C59EA2



97AE96



84B0AE

Sweetspot

The Sweet Spot groups the original color and five complimentary colors.



B7A1B9



EFE6F0



A1A3B9



777278



F7F7F7



787878

Same Dimension

The Same Dimension uses a secret algorithm to generate beautiful new colors.



B7A1B9



EDC9F0



B9A1AF



5B535C



8F009C



1A001C

Inverse Universe

The Inverse Universe completely reimagines the original color for something new.



B9A1A3



F0C9CD



A1B9AB



5C5353



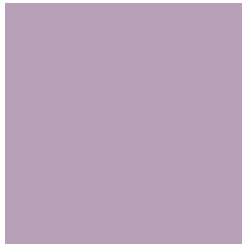
9C000D



1C0002

Previews

White Background



This preview shows how the Hex color B7A1B9 looks on a white background.

Color Contrast Check

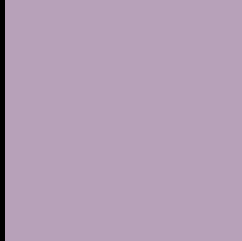
Large Text (above 18pt) WCAG AA × Fail

Any Text WCAG AA × Fail

Large Text (above 18pt) WCAG AAA × Fail

Any Text WCAG AAA × Fail

Black Background



This preview shows how the Hex color B7A1B9 looks on a black background.

Color Contrast Check

Large Text (above 18pt) WCAG AA ✓ Pass

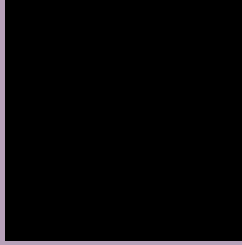
Any Text WCAG AA ✓ Pass

Large Text (above 18pt) WCAG AAA ✓ Pass

Any Text WCAG AAA ✓ Pass

If you want to check with other color combinations, try the [Color Contrast Checker](#).

Hex B7A1B9 Background



This preview shows how black text looks on a background with the Hex color B7A1B9.



This preview shows how white text looks on a background with the Hex color B7A1B9.

Color Blindness Simulation

Color vision deficiency is a very complex topic, and I could not describe the different causes any better than Wikipedia does, so if you want to learn more, you should check out their [article about color blindness](#).

Dichromacy



Original Color
B7A1B9

Protanopia
A5A7BD

Deuteranopia
B1A3B9



Tritanopia
B6A3AF

Trichromacy



Original Color
B7A1B9

Protanomaly
ACA5BC

Deuteranomaly
B3A2B9

Tritanomaly
B6A2B3

Monochromacy



Original Color
B7A1B9

Achromatopsia
AAAAAA

Achromatomaly
AFA7AF

CSS Examples

Text

The CSS property to change the color of the text to Hex B7A1B9 is called "color". The color property can be set on classes, ids or directly on the HTML element.

This example shows how text in the color #B7A1B9 looks like.

```
.text, #text, p{  
    color:#B7A1B9  
}
```

If you want to add a text shadow in that color use the text-shadow property, you can generate a text shadow directly with our [CSS Text Shadow Generator](#).

Here you see how black text with a 4 pixel #B7A1B9 colored shadow looks like.

```
.shadow{ text-shadow: 4px 4px 2px #B7A1B9
}
```

Border

The CSS property to change the border of an element to Hex B7A1B9 is called "border". The border property can be set on classes, ids or directly on the HTML element.

This example shows the color as border, it can be applied via the CSS property "border" or "border-color".

```
.border, #border, table{ border:4px solid
#B7A1B9 }
```

If only the border color should be changed use the property `border-color`.

```
.border{ border-color:#B7A1B9 }
```

If you want to add a box shadow in that color use:

Here you see how a box with a 4 pixel #B7A1B9 colored shadow looks like.

```
.boxshadow{ -moz-box-shadow:4px 4px 4px  
4px #B7A1B9; -webkit-box-shadow:4px 4px  
4px 4px #B7A1B9; box-shadow:4px 4px 4px  
4px #B7A1B9 }
```

Background

The CSS property to change the background color of an element to Hex B7A1B9 is called "background". The background property can be set on classes, ids or directly on the HTML element.

```
.background, #background, body{  
background:#B7A1B9 }
```

If only the background color should be changed can be used:

```
.background{ background-color:#B7A1B9 }
```

This example shows the color as background, it is applied via the CSS property "background".

To optimize and compress your CSS code, you can use our [online CSS compressor and optimizer](#) based on csstidy. If you want to create a linear or radial gradient as background or border, check our [CSS Gradient Generator](#).

Hey! You found this booklet interesting? Support Converting Colors with the new Membership Option!

The pro membership hides all ads, plus gives you double the colors in the color bucket, and more awesome pro features!

[Learn more, Memberships starting at \\$2.50/m!](#)

**Follow me
on Twitter!**

@ConvertingColor