

Converting Colors

Hex(B7A2A7)

Have a look what the booklet for
Hex(B7A2A7) contains.

Hex(B7A2A7)	3
<i>Conversions</i>	4
<i>Details</i>	6
<i>Harmonies</i>	11
<i>Previews</i>	23
<i>Color Blindness Simulation</i>	26
<i>CSS Examples</i>	29

Color

Hex(B7A2A7)

Conversions

Conversions Part 1

Format	Color
Hex	B7A2A7
RGB	183, 162, 167
RGB Percent	72%, 64%, 65%
CMY	0.2824, 0.3647, 0.3451
CMYK	0.00, 0.11, 0.09, 0.28
HSL	346°, 13%, 68%
HSV	346°, 11%, 72%
XYZ	39.4238, 38.6980, 41.9508
YIQ	168.8490, 10.9110, 6.0070

Conversions

Conversions Part 2

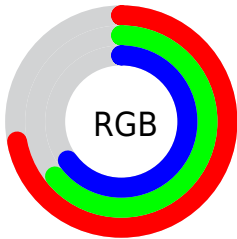
Format	Color
RYB	183, 162, 167
Decimal	12034727
CIELab	68.53, 8.52, 0.21
CIElCh	69, 8.528, 1.433
Yxy	38.6980, 0.3283, 0.3223
Android (android.graphics.Color)	4290224807 (0xFFB7A2A7)
YUV	168.8490, -0.9116, 12.4104
Hunter-Lab	62.2077, 4.2601, 3.5622

Details

The Hex color **B7A2A7** is a light color, and the websafe version is hex **999999**. A complement of this color would be **A2B7B2**, and the grayscale version is **A9A9A9**.

A 20% lighter version of the original color is **EFD9DE**, and **826E73** is the 20% darker color. If you saturate the color by 10%, you get **B79099**, and if you desaturate by 10%, it is **B7B4B5**.

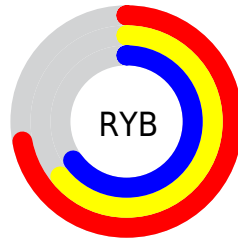
Distribution



Red (72%)

Green (64%)

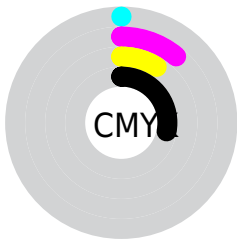
Blue (65%)



Red (72%)

Yellow (64%)

Blue (65%)

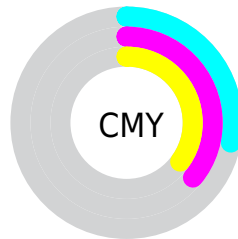


Cyan (0%)

Magenta (11%)

Yellow (9%)

Black (28%)



Cyan (28%)

Magenta (36%)

Yellow (35%)

Brightness & Saturation Gradients

These gradients show how the Hex color B7A2A7 changes by changing the brightness by 10 percent. The first figure shows a shift by +10% for each color and the second figure -10%.

Similar to the brightness gradients but the following saturation gradients show a change of the Hex color B7A2A7 by changing the saturation by 10% instead.



B7A2A7



B7A2A7

FFFFFF



9C888D



EFD9DE



826E73



FFF5FB



69565B



503F43



39292D



231418



060000



000000



B7A2A7



B7A2A7

 B79099

 B7B4B5

 B77D8B

 B7C7C3

 B76B7D

 B7D9D1

 B7596F

 B7EBDF

 B74761

 B7FDED

 B73453

 B7FFFB

 B72245

 B7FFFF

 B71037

 B7002C

Harmonies

Analogous

The Analogous color harmony consists of three colors that are next to each other on the color wheel.



B2A3AF



B7A2A7



B8A29F

Triad

The Triadic color harmony groups three colors that are evenly spaced from another and form a triangle on the color wheel.



B7A2A7



A5A99A



98AAB4

Complementary

The Complementary color scheme is a pair of colors which are on the opposite of each other on the color wheel.



B7A2A7



A2B7B2

Split Complementary

Split-complementary colors differ from the complementary color scheme. The scheme consists of three colors, the original color and two neighbors of the complement color.



94ABAF



B7A2A7



9CABA0

Square

The Square scheme is like the rectangle color scheme, but the four colors are evenly spaced on the color wheel.



B7A2A7



ADA798



96ACA7



A0A8B6

Rectangle

The Rectangle color scheme consists of four colors that form a rectangle on the color wheel.



B7A2A7



B6A49B



96ACA7



96ABB3

Sweetspot

The Sweet Spot groups the original color and five complimentary colors.



B7A2A7



EDE6E8



B2A2B7



787374



F7F7F7



787878

Same Dimension

The Same Dimension uses a secret algorithm to generate beautiful new colors.



B7A2A7



EDCCD4



B7A7A2



5C5355



9C0025



1C0007

Inverse Universe

The Inverse Universe completely reimagines the original color for something new.



B7A2A7



EDCCD4



A2B2B7



5C5355



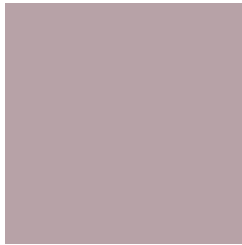
9C0025



1C0007

Previews

White Background



This preview shows how the Hex color B7A2A7 looks on a white background.

Color Contrast Check

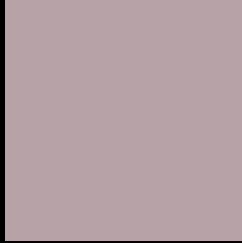
Large Text (above 18pt) WCAG AA × Fail

Any Text WCAG AA × Fail

Large Text (above 18pt) WCAG AAA × Fail

Any Text WCAG AAA × Fail

Black Background



This preview shows how the Hex color B7A2A7 looks on a black background.

Color Contrast Check

Large Text (above 18pt) WCAG AA ✓ Pass

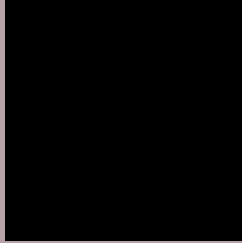
Any Text WCAG AA ✓ Pass

Large Text (above 18pt) WCAG AAA ✓ Pass

Any Text WCAG AAA ✓ Pass

If you want to check with other color combinations, try the [Color Contrast Checker](#).

Hex B7A2A7 Background



This preview shows how black text looks on a background with the Hex color B7A2A7.

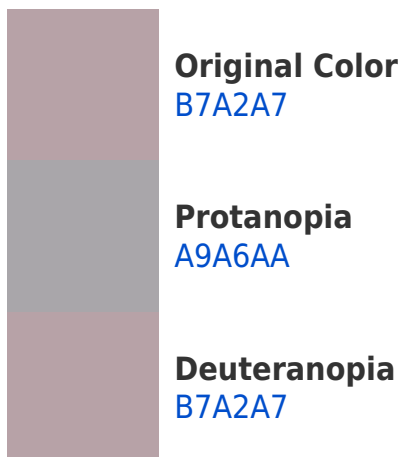


This preview shows how white text looks on a background with the Hex color B7A2A7.

Color Blindness Simulation

Color vision deficiency is a very complex topic, and I could not describe the different causes any better than Wikipedia does, so if you want to learn more, you should check out their [article about color blindness](#).

Dichromacy





Tritanopia
B8A1AE

Trichromacy



Original Color
B7A2A7

Protanomaly
AEA5A9

Deuteranomaly
B7A2A7

Tritanomaly
B8A1AB

Monochromacy



Original Color
B7A2A7

Achromatopsia
A9A9A9

Achromatomaly
AEA6A8

CSS Examples

Text

The CSS property to change the color of the text to Hex B7A2A7 is called "color". The color property can be set on classes, ids or directly on the HTML element.

This example shows how text in the color #B7A2A7 looks like.

```
.text, #text, p{  
    color:#B7A2A7  
}
```

If you want to add a text shadow in that color use the text-shadow property, you can generate a text shadow directly with our [CSS Text Shadow Generator](#).

Here you see how black text with a 4 pixel #B7A2A7 colored shadow looks like.

```
.shadow{ text-shadow: 4px 4px 2px #B7A2A7
}
```

Border

The CSS property to change the border of an element to Hex B7A2A7 is called "border". The border property can be set on classes, ids or directly on the HTML element.

This example shows the color as border, it can be applied via the CSS property "border" or "border-color".

```
.border, #border, table{ border:4px solid
#B7A2A7 }
```

If only the border color should be changed use the property `border-color`.

```
.border{ border-color:#B7A2A7 }
```

If you want to add a box shadow in that color use:

Here you see how a box with a 4 pixel #B7A2A7 colored shadow looks like.

```
.boxshadow{ -moz-box-shadow:4px 4px 4px  
4px #B7A2A7; -webkit-box-shadow:4px 4px  
4px 4px #B7A2A7; box-shadow:4px 4px 4px  
4px #B7A2A7 }
```

Background

The CSS property to change the background color of an element to Hex B7A2A7 is called "background". The background property can be set on classes, ids or directly on the HTML element.

```
.background, #background, body{  
background:#B7A2A7 }
```

If only the background color should be changed can be used:

```
.background{ background-color:#B7A2A7 }
```

This example shows the color as background, it is applied via the CSS property "background".

To optimize and compress your CSS code, you can use our [online CSS compressor and optimizer](#) based on csstidy. If you want to create a linear or radial gradient as background or border, check our [CSS Gradient Generator](#).

Hey! You found this booklet interesting? Support Converting Colors with the new Membership Option!

The pro membership hides all ads, plus gives you double the colors in the color bucket, and more awesome pro features!

[Learn more, Memberships starting at \\$2.50/m!](#)

**Follow me
on Twitter!**

@ConvertingColor