

Converting Colors

Hex(B8595F)

Have a look what the booklet for
Hex(B8595F) contains.

Hex(B8595F)	3
<i>Conversions</i>	4
<i>Details</i>	6
<i>Harmonies</i>	11
<i>Previews</i>	23
<i>Color Blindness Simulation</i>	26
<i>CSS Examples</i>	29

Color

Hex(B8595F)

Conversions

Conversions Part 1

Format	Color
Hex	B8595F
RGB	184, 89, 95
RGB Percent	72%, 35%, 37%
CMY	0.2784, 0.6510, 0.6275
CMYK	0.00, 0.52, 0.48, 0.28
HSL	356°, 40%, 54%
HSV	356°, 52%, 72%
XYZ	25.4051, 18.1613, 12.9930
YIQ	118.0890, 54.6940, 22.0060

Conversions

Conversions Part 2

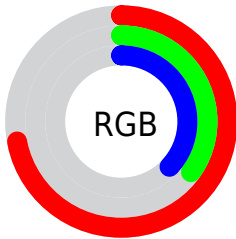
Format	Color
RYB	184, 89, 95
Decimal	12081503
CIELab	49.69, 38.93, 14.80
CIELCh	50, 41.646, 20.811
Yxy	18.1613, 0.4492, 0.3211
Android (android.graphics.Color)	4290271583 (0xFFB8595F)
YUV	118.0890, -11.3829, 57.8039
Hunter-Lab	42.6161, 31.8325, 11.7547

Details

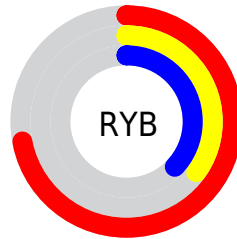
The Hex color **B8595F** is a dark color, and the websafe version is hex **CC6666**. A complement of this color would be **59B8B2**, and the grayscale version is **767676**.

A 20% lighter version of the original color is **F38D91**, and **7F2631** is the 20% darker color. If you saturate the color by 10%, you get **B8474E**, and if you desaturate by 10%, it is **B86B70**.

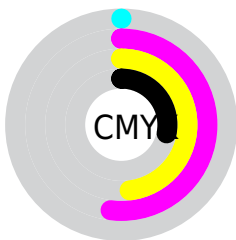
Distribution



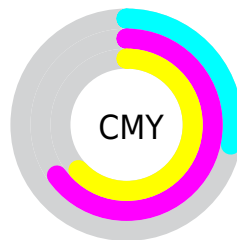
- Red (72%)
- Green (35%)
- Blue (37%)



- Red (72%)
- Yellow (35%)
- Blue (37%)



- Cyan (0%)
- Magenta (52%)
- Yellow (48%)
- Black (28%)



- Cyan (28%)
- Magenta (65%)
- Yellow (63%)

Brightness & Saturation Gradients

These gradients show how the Hex color B8595F changes by changing the brightness by 10 percent. The first figure shows a shift by +10% for each color and the second figure -10%.

Similar to the brightness gradients but the following saturation gradients show a change of the Hex color B8595F by changing the saturation by 10% instead.



B8595F



B8595F

FFFFFF



9B4047



F38D91



7F2631



FFA9AC



63081C



FFC4C7



480002



FFE1E3



300002

FFFEFF



000000



B8595F



B8595F



B8474E



B86B70



B8343D



B87E81

 B8222B

 B89093

 B80F1A

 B8A3A4

 B8000C

 B8B5B5

 B8C7C6

 B8DAD8

 B8ECE9

 B8FFFA

Harmonies

Analogous

The Analogous color harmony consists of three colors that are next to each other on the color wheel.



B25983



B8595F



AC6340

Triad

The Triadic color harmony groups three colors that are evenly spaced from another and form a triangle on the color wheel.



B8595F



488348



007DBC

Complementary

The Complementary color scheme is a pair of colors which are on the opposite of each other on the color wheel.



B8595F



59B8B2

Split Complementary

Split-complementary colors differ from the complementary color scheme. The scheme consists of three colors, the original color and two neighbors of the complement color.



0085AC



B8595F



00876A

Square

The Square scheme is like the rectangle color scheme, but the four colors are evenly spaced on the color wheel.



B8595F



727C31



00888E



6671B8

Rectangle

The Rectangle color scheme consists of four colors that form a rectangle on the color wheel.



B8595F



9D6C32



00888E



0080B9

Sweetspot

The Sweet Spot groups the original color and five complimentary colors.



B8595F



F0CCCE



B259B8



786264



F7F7F7



787878

Same Dimension

The Same Dimension uses a secret algorithm to generate beautiful new colors.



B8595F



F05B64



B88259



5C5353



9C000A



1C0002

Inverse Universe

The Inverse Universe completely reimagines the original color for something new.



B8595F



F05B64



598FB8



5C5353



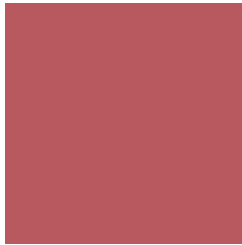
9C000A



1C0002

Previews

White Background



This preview shows how the Hex color B8595F looks on a white background.

Color Contrast Check

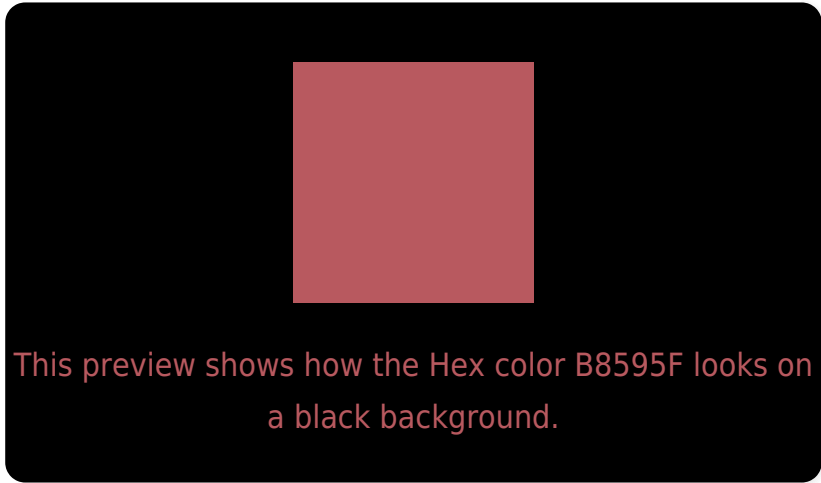
Large Text (above 18pt) WCAG AA ✓ Pass

Any Text WCAG AA ✓ Pass

Large Text (above 18pt) WCAG AAA ✓ Pass

Any Text WCAG AAA × Fail

Black Background



Color Contrast Check

Large Text (above 18pt) WCAG AA ✓ Pass

Any Text WCAG AA ✓ Pass

Large Text (above 18pt) WCAG AAA ✓ Pass

Any Text WCAG AAA × Fail

If you want to check with other color combinations, try the [Color Contrast Checker](#).

Hex B8595F Background



This preview shows how black text looks on a background with the Hex color B8595F.

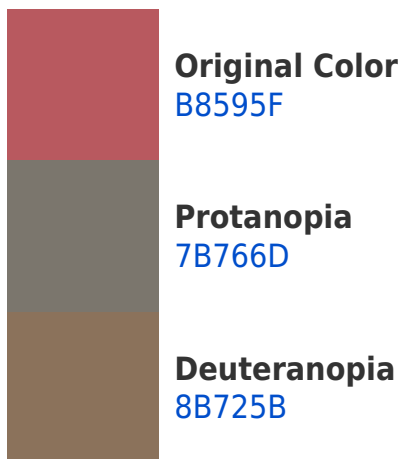



This preview shows how white text looks on a background with the Hex color B8595F.

Color Blindness Simulation

Color vision deficiency is a very complex topic, and I could not describe the different causes any better than Wikipedia does, so if you want to learn more, you should check out their [article about color blindness](#).

Dichromacy





Tritanopia
B8595F

Trichromacy



Monochromacy



CSS Examples

Text

The CSS property to change the color of the text to Hex B8595F is called "color". The color property can be set on classes, ids or directly on the HTML element.

This example shows how text in the color #B8595F looks like.

```
.text, #text, p{  
    color:#B8595F  
}
```

If you want to add a text shadow in that color use the text-shadow property, you can generate a text shadow directly with our [CSS Text Shadow Generator](#).

Here you see how black text with a 4 pixel #B8595F colored shadow looks like.

```
.shadow{ text-shadow: 4px 4px 2px #B8595F
}
```

Border

The CSS property to change the border of an element to Hex B8595F is called "border". The border property can be set on classes, ids or directly on the HTML element.

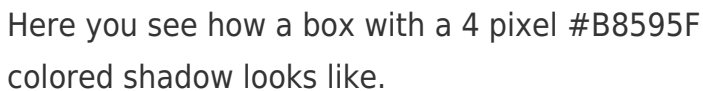
This example shows the color as border, it can be applied via the CSS property "border" or "border-color".

```
.border, #border, table{ border:4px solid
#B8595F }
```

If only the border color should be changed use the property `border-color`.

```
.border{ border-color:#B8595F }
```

If you want to add a box shadow in that color use:



Here you see how a box with a 4 pixel #B8595F colored shadow looks like.

```
.boxshadow{ -moz-box-shadow:4px 4px 4px  
4px #B8595F; -webkit-box-shadow:4px 4px  
4px 4px #B8595F; box-shadow:4px 4px 4px  
4px #B8595F }
```

Background

The CSS property to change the background color of an element to Hex B8595F is called "background". The background property can be set on classes, ids or directly on the HTML element.

```
.background, #background, body{  
background:#B8595F }
```

If only the background color should be changed can be used:

```
.background{ background-color:#B8595F }
```

This example shows the color as background, it is applied via the CSS property "background".

To optimize and compress your CSS code, you can use our [online CSS compressor and optimizer](#) based on csstidy. If you want to create a linear or radial gradient as background or border, check our [CSS Gradient Generator](#).

Hey! You found this booklet
interesting? Support Converting
Colors with the new Membership
Option!

The pro membership hides all ads, plus gives you
double the colors in the color bucket, and more
awesome pro features!

[Learn more, Memberships starting at \\$2.50/m!](#)

**Follow me
on Twitter!**

@ConvertingColor