

# Converting Colors

Hex(B85E60)

Have a look what the booklet for  
Hex(B85E60) contains.

<b>Hex(B85E60)</b> .....	3
<b><i>Conversions</i></b> .....	4
<b><i>Details</i></b> .....	6
<b><i>Harmonies</i></b> .....	11
<b><i>Previews</i></b> .....	23
<b><i>Color Blindness Simulation</i></b> .....	26
<b><i>CSS Examples</i></b> .....	29

# Color

**Hex(B85E60)**

# Conversions

## Conversions Part 1

Format	Color
Hex	B85E60
RGB	184, 94, 96
RGB Percent	72%, 37%, 38%
CMY	0.2784, 0.6314, 0.6235
CMYK	0.00, 0.49, 0.48, 0.28
HSL	359°, 39%, 55%
HSV	359°, 49%, 72%
XYZ	25.8812, 19.0403, 13.3774
YIQ	121.1380, 52.9980, 19.7020

# Conversions

## Conversions Part 2

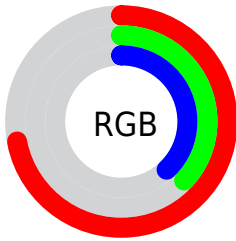
<b>Format</b>	<b>Color</b>
<b>R<sub>YB</sub></b>	184, 94, 96
Decimal	12082784
CIE <sub>Lab</sub>	50.73, 36.43, 15.63
CIE <sub>LCh</sub>	51, 39.644, 23.224
Yxy	19.0403, 0.4439, 0.3266
Android (android.graphics.Color)	4290272864 (0xFFB85E60)
YUV	121.1380, -12.3930, 55.1300
Hunter-Lab	43.6352, 29.5116, 12.3679

# Details

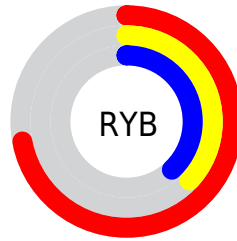
The Hex color **B85E60** is a dark color, and the websafe version is hex **CC6666**. A complement of this color would be **5EB8B6**, and the grayscale version is **797979**.

A 20% lighter version of the original color is **F39292**, and **7F2C32** is the 20% darker color. If you saturate the color by 10%, you get **B84C4E**, and if you desaturate by 10%, it is **B87072**.

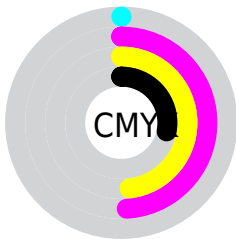
# Distribution



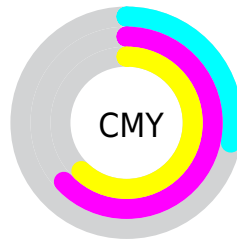
- Red (72%)
- Green (37%)
- Blue (38%)



- Red (72%)
- Yellow (37%)
- Blue (38%)



- Cyan (0%)
- Magenta (49%)
- Yellow (48%)
- Black (28%)



- Cyan (28%)
- Magenta (63%)
- Yellow (62%)

# Brightness & Saturation Gradients

These gradients show how the Hex color B85E60 changes by changing the brightness by 10 percent. The first figure shows a shift by +10% for each color and the second figure -10%.

Similar to the brightness gradients but the following saturation gradients show a change of the Hex color B85E60 by changing the saturation by 10% instead.



 B85E60

 B85E60

FFFFFF

 9B4548

 F39292

 7F2C32

 FFAEAD

 63111D

 FFC9C8

 490004

 FFE6E4

 310001

 000000

 B85E60

 B85E60

 B84C4E

 B87072

 B8393C

 B88384

 B8272A

 B89596

 B81418

 B8A8A8

 B80206

 B8BABA

 B80004

 B8CCCC

 B8DFDE

 B8F1F0

 B8FFFF

# Harmonies

## Analogous

The Analogous color harmony consists of three colors that are next to each other on the color wheel.



B35D82



B85E60



AC6844

# Triad

The Triadic color harmony groups three colors that are evenly spaced from another and form a triangle on the color wheel.



B85E60



4A864F



227FBC

# Complementary

The Complementary color scheme is a pair of colors which are on the opposite of each other on the color wheel.



B85E60



5EB8B6

# Split Complementary

Split-complementary colors differ from the complementary color scheme. The scheme consists of three colors, the original color and two neighbors of the complement color.



0086AE



B85E60



008970

# Square

The Square scheme is like the rectangle color scheme, but the four colors are evenly spaced on the color wheel.



B85E60



737F38



008A92



6F73B7

# Rectangle

The Rectangle color scheme consists of four colors that form a rectangle on the color wheel.



B85E60



9D7037



008A92



0082B9



# Sweetspot

The Sweet Spot groups the original color and five complimentary colors.



B85E60



F0CCCD



B55EB8



786263



F7F7F7



787878



# Same Dimension

The Same Dimension uses a secret algorithm to generate beautiful new colors.



B85E60



F06265



B8885E



5C5353



9C0003



1C0001



# Inverse Universe

The Inverse Universe completely reimagines the original color for something new.



B85E60



F06265



5E8EB8



5C5353



9C0003

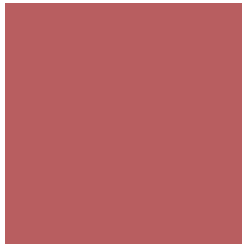


1C0001



# Previews

## White Background



This preview shows how the Hex color B85E60 looks on a white background.

## Color Contrast Check

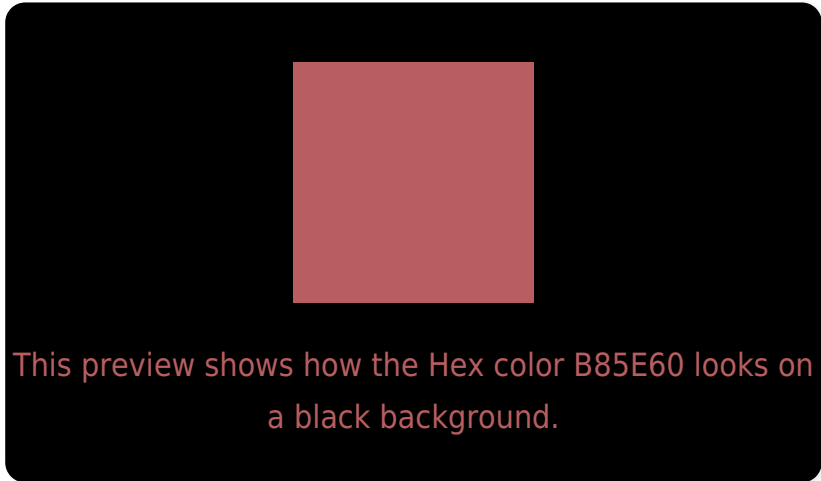
Large Text (above 18pt) WCAG AA ✓ Pass

Any Text WCAG AA × Fail

Large Text (above 18pt) WCAG AAA × Fail

Any Text WCAG AAA × Fail

# Black Background



## Color Contrast Check

Large Text (above 18pt) WCAG AA ✓ Pass

Any Text WCAG AA ✓ Pass

Large Text (above 18pt) WCAG AAA ✓ Pass

Any Text WCAG AAA × Fail

If you want to check with other color combinations, try the [Color Contrast Checker](#).



## Hex B85E60 Background



This preview shows how black text looks on a background with the Hex color B85E60.




This preview shows how white text looks on a background with the Hex color B85E60.

# Color Blindness Simulation

Color vision deficiency is a very complex topic, and I could not describe the different causes any better than Wikipedia does, so if you want to learn more, you should check out their [article about color blindness](#).

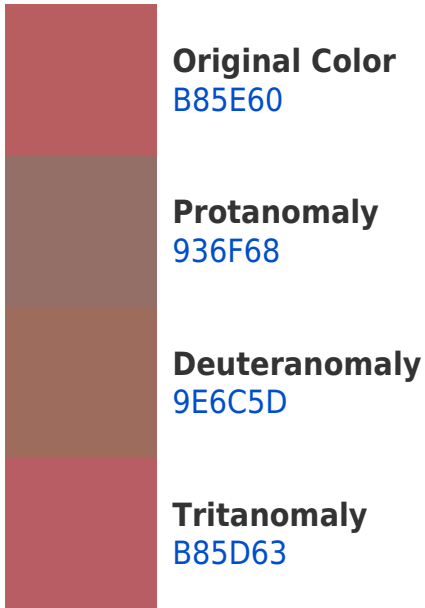
## Dichromacy





**Tritanopia**  
B85D64

# Trichromacy



# Monochromacy



# CSS Examples

## Text

The CSS property to change the color of the text to Hex B85E60 is called "color". The color property can be set on classes, ids or directly on the HTML element.

This example shows how text in the color #B85E60 looks like.

```
.text, #text, p{  
    color:#B85E60  
}
```

If you want to add a text shadow in that color use the text-shadow property, you can generate a text shadow directly with our [CSS Text Shadow Generator](#).

Here you see how black text with a 4 pixel #B85E60 colored shadow looks like.

```
.shadow{ text-shadow: 4px 4px 2px #B85E60
}
```

## Border

The CSS property to change the border of an element to Hex B85E60 is called "border". The border property can be set on classes, ids or directly on the HTML element.

This example shows the color as border, it can be applied via the CSS property "border" or "border-color".

```
.border, #border, table{ border:4px solid
#B85E60 }
```

If only the border color should be changed use the property `border-color`.

```
.border{ border-color:#B85E60 }
```

If you want to add a box shadow in that color use:

Here you see how a box with a 4 pixel #B85E60 colored shadow looks like.

```
.boxshadow{ -moz-box-shadow:4px 4px 4px  
4px #B85E60; -webkit-box-shadow:4px 4px  
4px 4px #B85E60; box-shadow:4px 4px 4px  
4px #B85E60 }
```

# Background

The CSS property to change the background color of an element to Hex B85E60 is called "background". The background property can be set on classes, ids or directly on the HTML element.

```
.background, #background, body{  
background:#B85E60 }
```

If only the background color should be changed can be used:

```
.background{ background-color:#B85E60 }
```

This example shows the color as background, it is applied via the CSS property "background".

To optimize and compress your CSS code, you can use our [online CSS compressor and optimizer](#) based on csstidy. If you want to create a linear or radial gradient as background or border, check our [CSS Gradient Generator](#).



Hey! You found this booklet interesting? Support Converting Colors with the new Membership Option!

The pro membership hides all ads, plus gives you double the colors in the color bucket, and more awesome pro features!

**[Learn more, Memberships starting at \\$2.50/m!](#)**

**Follow me  
on Twitter!**

@ConvertingColor