

Converting Colors

Hex(B8696C)

Have a look what the booklet for
Hex(B8696C) contains.

| | |
|--|----|
| Hex(B8696C) | 3 |
| <i>Conversions</i> | 4 |
| <i>Details</i> | 6 |
| <i>Harmonies</i> | 11 |
| <i>Previews</i> | 23 |
| <i>Color Blindness Simulation</i> | 26 |
| <i>CSS Examples</i> | 29 |

Color

Hex(B8696C)

Conversions

Conversions Part 1

| Format | Color |
|---------------|----------------------------|
| Hex | B8696C |
| RGB | 184, 105, 108 |
| RGB Percent | 72%, 41%, 42% |
| CMY | 0.2784, 0.5882, 0.5765 |
| CMYK | 0.00, 0.43, 0.41, 0.28 |
| HSL | 358°, 36%, 57% |
| HSV | 358°, 43%, 72% |
| XYZ | 27.5255, 21.3762, 16.8626 |
| YIQ | 128.9630, 46.1210, 17.6810 |

Conversions

Conversions Part 2

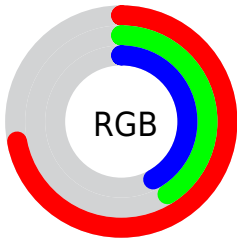
| Format | Color |
|-------------------------------------|--|
| RYB | 184, 105, 108 |
| Decimal | 12085612 |
| CIELab | 53.36, 31.84, 12.18 |
| CIElCh | 53, 34.093, 20.933 |
| Yxy | 21.3762, 0.4185, 0.3250 |
| Android (android.graphics.Color) | 4290275692 (0xFFB8696C) |
| YUV | 128.9630, -10.3348, 48.2674 |
| Hunter-Lab | 46.2344, 25.3592, 10.7398 |

Details

The Hex color **B8696C** is a dark color, and the websafe version is hex **CC6666**. A complement of this color would be **69B8B5**, and the grayscale version is **818181**.

A 20% lighter version of the original color is **F29D9F**, and **80383D** is the 20% darker color. If you saturate the color by 10%, you get **B8575A**, and if you desaturate by 10%, it is **B87B7E**.

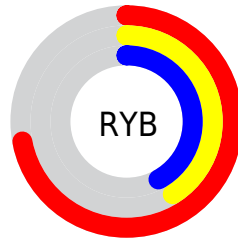
Distribution



Red (72%)

Green (41%)

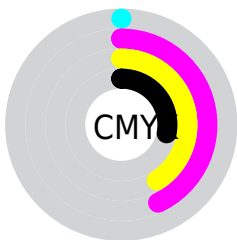
Blue (42%)



Red (72%)

Yellow (41%)

Blue (42%)

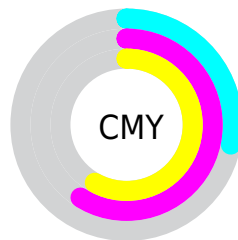


Cyan (0%)

Magenta (43%)

Yellow (41%)

Black (28%)



Cyan (28%)

Magenta (59%)

Yellow (58%)

Brightness & Saturation Gradients

These gradients show how the Hex color B8696C changes by changing the brightness by 10 percent. The first figure shows a shift by +10% for each color and the second figure -10%.

Similar to the brightness gradients but the following saturation gradients show a change of the Hex color B8696C by changing the saturation by 10% instead.

 B8696C

 B8696C

FFFFFF

 9C5054

 F29D9F

 80383D

 FFB9BA

 651F27

 FFD5D6

 4A0513

 FFF1F2

 320000

 080000

 000000

 B8696C

 B8696C

 B8575A

 B87B7E

 B84449

 B88E8F

 B83237

 B8A0A1

 B81F25

 B8B3B3

 B80D13

 B8C5C5

 B80007

 B8D7D6

 B8EAE8

 B8FCFA

 B8FFFF

Harmonies

Analogous

The Analogous color harmony consists of three colors that are next to each other on the color wheel.



B2698A



B8696C



AF7053

Triad

The Triadic color harmony groups three colors that are evenly spaced from another and form a triangle on the color wheel.



B8696C



5C8B59



4085B9

Complementary

The Complementary color scheme is a pair of colors which are on the opposite of each other on the color wheel.



B8696C



69B8B5

Split Complementary

Split-complementary colors differ from the complementary color scheme. The scheme consists of three colors, the original color and two neighbors of the complement color.



008CAC



B8696C



318E75

Square

The Square scheme is like the rectangle color scheme, but the four colors are evenly spaced on the color wheel.



B8696C



7D8447



008F93



757BB6

Rectangle

The Rectangle color scheme consists of four colors that form a rectangle on the color wheel.



B8696C



A27748



008F93



2888B6

Sweetspot

The Sweet Spot groups the original color and five complimentary colors.



B8696C



F0D1D2



B469B8



786565



F7F7F7



787878

Same Dimension

The Same Dimension uses a secret algorithm to generate beautiful new colors.



B8696C



F07378



B88D69



5C5353



9C0006



1C0001

Inverse Universe

The Inverse Universe completely reimagines the original color for something new.



B8696C



F07378



6994B8



5C5353



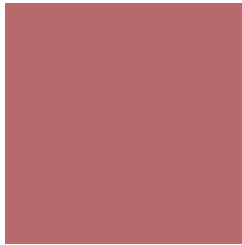
9C0006



1C0001

Previews

White Background



This preview shows how the Hex color B8696C looks on a white background.

Color Contrast Check

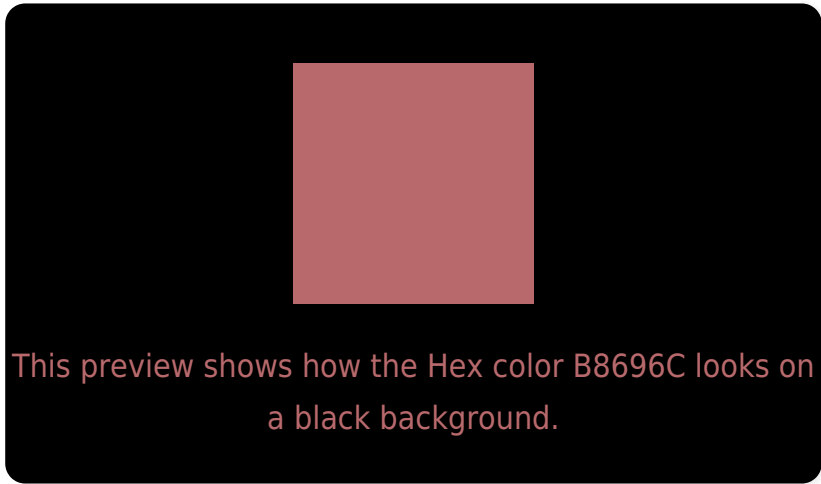
Large Text (above 18pt) WCAG AA ✓ Pass

Any Text WCAG AA × Fail

Large Text (above 18pt) WCAG AAA × Fail

Any Text WCAG AAA × Fail

Black Background



Color Contrast Check

Large Text (above 18pt) WCAG AA ✓ Pass

Any Text WCAG AA ✓ Pass

Large Text (above 18pt) WCAG AAA ✓ Pass

Any Text WCAG AAA × Fail

If you want to check with other color combinations, try the [Color Contrast Checker](#).

Hex B8696C Background



This preview shows how black text looks on a background with the Hex color B8696C.



This preview shows how white text looks on a background with the Hex color B8696C.

Color Blindness Simulation

Color vision deficiency is a very complex topic, and I could not describe the different causes any better than Wikipedia does, so if you want to learn more, you should check out their [article about color blindness](#).

Dichromacy



Original Color
B8696C

Protanopia
847F78

Deuteranopia
947B69



Tritanopia
B86870

Trichromacy



Original Color
B8696C

Protanomaly
977774

Deuteranomaly
A1746A

Tritanomaly
B8686F

Monochromacy



Original Color
B8696C

Achromatopsia
818181

Achromatomaly
957879

CSS Examples

Text

The CSS property to change the color of the text to Hex B8696C is called "color". The color property can be set on classes, ids or directly on the HTML element.

This example shows how text in the color #B8696C looks like.

```
.text, #text, p{  
    color:#B8696C  
}
```

If you want to add a text shadow in that color use the text-shadow property, you can generate a text shadow directly with our [CSS Text Shadow Generator](#).

Here you see how black text with a 4 pixel #B8696C colored shadow looks like.

```
.shadow{ text-shadow: 4px 4px 2px #B8696C
}
```

Border

The CSS property to change the border of an element to Hex B8696C is called "border". The border property can be set on classes, ids or directly on the HTML element.

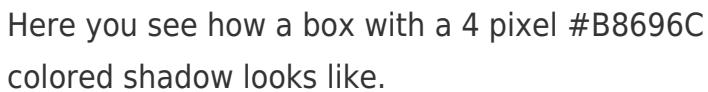
This example shows the color as border, it can be applied via the CSS property "border" or "border-color".

```
.border, #border, table{ border:4px solid
#B8696C }
```

If only the border color should be changed use the property `border-color`.

```
.border{ border-color:#B8696C }
```

If you want to add a box shadow in that color use:



Here you see how a box with a 4 pixel #B8696C colored shadow looks like.

```
.boxshadow{ -moz-box-shadow:4px 4px 4px  
4px #B8696C; -webkit-box-shadow:4px 4px  
4px 4px #B8696C; box-shadow:4px 4px 4px  
4px #B8696C }
```

Background

The CSS property to change the background color of an element to Hex B8696C is called "background". The background property can be set on classes, ids or directly on the HTML element.

```
.background, #background, body{  
background:#B8696C }
```

If only the background color should be changed can be used:

```
.background{ background-color:#B8696C }
```

This example shows the color as background, it is applied via the CSS property "background".

To optimize and compress your CSS code, you can use our [online CSS compressor and optimizer](#) based on csstidy. If you want to create a linear or radial gradient as background or border, check our [CSS Gradient Generator](#).

Hey! You found this booklet interesting? Support Converting Colors with the new Membership Option!

The pro membership hides all ads, plus gives you double the colors in the color bucket, and more awesome pro features!

[Learn more, Memberships starting at \\$2.50/m!](#)

**Follow me
on Twitter!**

@ConvertingColor