

# Converting Colors

Hex(B86E6F)

Have a look what the booklet for  
Hex(B86E6F) contains.

<b>Hex(B86E6F)</b> .....	3
<i><b>Conversions</b></i> .....	4
<i><b>Details</b></i> .....	6
<i><b>Harmonies</b></i> .....	11
<i><b>Previews</b></i> .....	23
<i><b>Color Blindness Simulation</b></i> .....	26
<i><b>CSS Examples</b></i> .....	29

# Color

**Hex(B86E6F)**

# Conversions

## Conversions Part 1

<b>Format</b>	<b>Color</b>
Hex	<a href="#">B86E6F</a>
RGB	<a href="#">184, 110, 111</a>
RGB Percent	<a href="#">72%, 43%, 44%</a>
CMY	<a href="#">0.2784, 0.5686, 0.5647</a>
CMYK	<a href="#">0.00, 0.40, 0.40, 0.28</a>
HSL	<a href="#">359°, 34%, 58%</a>
HSV	<a href="#">359°, 40%, 72%</a>
XYZ	<a href="#">28.2123, 22.4899, 17.8930</a>
YIQ	<a href="#">132.2400, 43.7830, 15.9990</a>

# Conversions

## Conversions Part 2

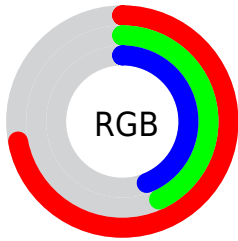
<b>Format</b>	<b>Color</b>
<b>R<sub>YB</sub></b>	184, 110, 111
Decimal	12086895
CIE Lab	54.54, 29.47, 12.08
CIE LCh	55, 31.846, 22.288
Yxy	22.4899, 0.4113, 0.3279
Android (android.graphics.Color)	4290276975 (0xFFB86E6F)
YUV	132.2400, -10.4713, 45.3935
Hunter-Lab	47.4235, 23.1988, 10.8263

# Details

The Hex color **B86E6F** is a dark color, and the websafe version is hex **996666**. A complement of this color would be **6EB8B7**, and the grayscale version is **848484**.

A 20% lighter version of the original color is **F2A3A3**, and **803D3F** is the 20% darker color. If you saturate the color by 10%, you get **B85C5D**, and if you desaturate by 10%, it is **B88081**.

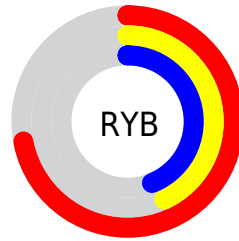
# Distribution



Red (72%)

Green (43%)

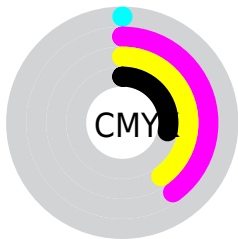
Blue (44%)



Red (72%)

Yellow (43%)

Blue (44%)

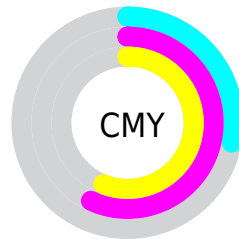


Cyan (0%)

Magenta (40%)

Yellow (40%)

Black (28%)



Cyan (28%)

Magenta (57%)

Yellow (56%)

# Brightness & Saturation Gradients

These gradients show how the Hex color B86E6F changes by changing the brightness by 10 percent. The first figure shows a shift by +10% for each color and the second figure -10%.

Similar to the brightness gradients but the following saturation gradients show a change of the Hex color B86E6F by changing the saturation by 10% instead.



 B86E6F

 B86E6F

FFFFFF

 9C5557

 F2A3A3

 803D3F

 FFBEBE

 65252A

 FFDAD9

 4B0C15

 FFF7F6

 330000

 0F0000

 000000

 B86E6F

 B86E6F

 B85C5D

 B88081

 B8494B

 B89393

 B83739

 B8A5A5

 B82426

 B8B8B8

 B81214

 B8CACA

 B80002

 B8DCDC

 B8EFEE

 B8FFFF

# Harmonies

## Analogous

The Analogous color harmony consists of three colors that are next to each other on the color wheel.



B36E8B



B86E6F



AF7558

# Triad

The Triadic color harmony groups three colors that are evenly spaced from another and form a triangle on the color wheel.



B86E6F



608D60



4D87B9

# Complementary

The Complementary color scheme is a pair of colors which are on the opposite of each other on the color wheel.



B86E6F



6EB8B7

# Split Complementary

Split-complementary colors differ from the complementary color scheme. The scheme consists of three colors, the original color and two neighbors of the complement color.



158EAD



B86E6F



3B917A

# Square

The Square scheme is like the rectangle color scheme, but the four colors are evenly spaced on the color wheel.



B86E6F



80874F



089196



7B7EB5

# Rectangle

The Rectangle color scheme consists of four colors that form a rectangle on the color wheel.



B86E6F



A27B4E



089196



3C8AB6



# Sweetspot

The Sweet Spot groups the original color and five complimentary colors.



B86E6F



F0D3D3



B76EB8



786767



F7F7F7



787878



# Same Dimension

The Same Dimension uses a secret algorithm to generate beautiful new colors.



B86E6F



F07D7E



B8926E



5C5353



9C0002



1C0000



# Inverse Universe

The Inverse Universe completely reimagines the original color for something new.



B86E6F



F07D7E



6E94B8



5C5353



9C0002

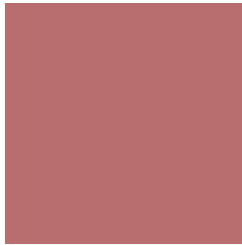


1C0000



# Previews

## White Background



This preview shows how the Hex color B86E6F looks on a white background.

## Color Contrast Check

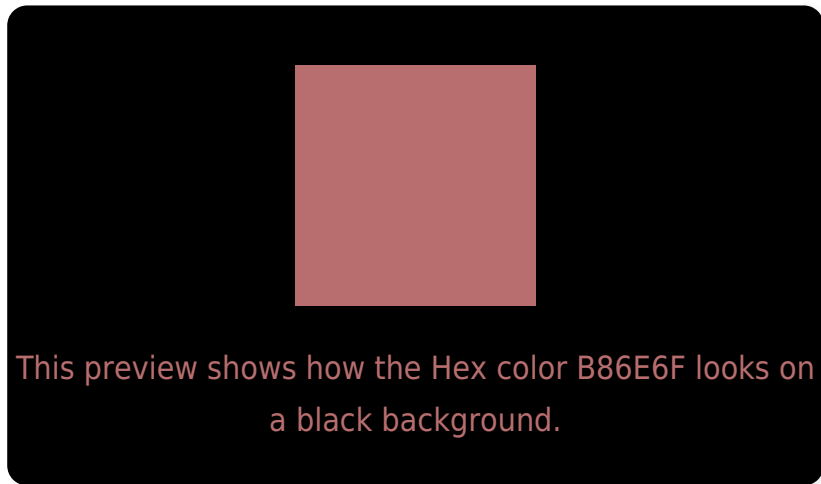
Large Text (above 18pt) WCAG AA ✓ Pass

Any Text WCAG AA × Fail

Large Text (above 18pt) WCAG AAA × Fail

Any Text WCAG AAA × Fail

# Black Background



## Color Contrast Check

Large Text (above 18pt) WCAG AA ✓ Pass

Any Text WCAG AA ✓ Pass

Large Text (above 18pt) WCAG AAA ✓ Pass

Any Text WCAG AAA × Fail

If you want to check with other color combinations, try the [Color Contrast Checker](#).



## Hex B86E6F Background



This preview shows how black text looks on a background with the Hex color B86E6F.



This preview shows how white text looks on a background with the Hex color B86E6F.

# Color Blindness Simulation

Color vision deficiency is a very complex topic, and I could not describe the different causes any better than Wikipedia does, so if you want to learn more, you should check out their [article about color blindness](#).


## Dichromacy



**Original Color**  
B86E6F

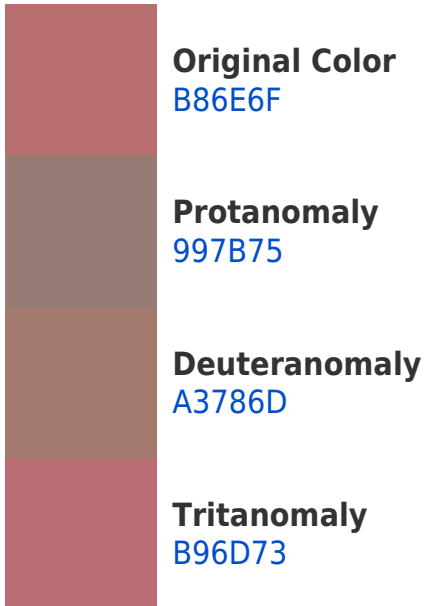
**Protanopia**  
878279

**Deuteranopia**  
977E6C



**Tritanopia**  
B96D75

# Trichromacy



# Monochromacy



# CSS Examples

## Text

The CSS property to change the color of the text to Hex B86E6F is called "color". The color property can be set on classes, ids or directly on the HTML element.

This example shows how text in the color #B86E6F looks like.

```
.text, #text, p{  
    color:#B86E6F  
}
```

If you want to add a text shadow in that color use the text-shadow property, you can generate a text shadow directly with our [CSS Text Shadow Generator](#).

Here you see how black text with a 4 pixel #B86E6F colored shadow looks like.

```
.shadow{ text-shadow: 4px 4px 2px #B86E6F
}
```

## Border

The CSS property to change the border of an element to Hex B86E6F is called "border". The border property can be set on classes, ids or directly on the HTML element.

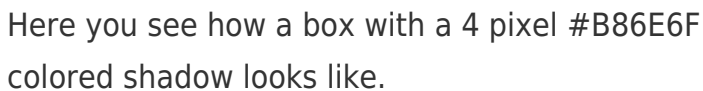
This example shows the color as border, it can be applied via the CSS property "border" or "border-color".

```
.border, #border, table{ border:4px solid
#B86E6F }
```

If only the border color should be changed use the property `border-color`.

```
.border{ border-color:#B86E6F }
```

If you want to add a box shadow in that color use:



Here you see how a box with a 4 pixel #B86E6F colored shadow looks like.

```
.boxshadow{ -moz-box-shadow:4px 4px 4px  
4px #B86E6F; -webkit-box-shadow:4px 4px  
4px 4px #B86E6F; box-shadow:4px 4px 4px  
4px #B86E6F }
```

# Background

The CSS property to change the background color of an element to Hex B86E6F is called "background". The background property can be set on classes, ids or directly on the HTML element.

```
.background, #background, body{  
background:#B86E6F }
```

If only the background color should be changed can be used:

```
.background{ background-color:#B86E6F }
```

This example shows the color as background, it is applied via the CSS property "background".

To optimize and compress your CSS code, you can use our [online CSS compressor and optimizer](#) based on csstidy. If you want to create a linear or radial gradient as background or border, check our [CSS Gradient Generator](#).



Hey! You found this booklet interesting? Support Converting Colors with the new Membership Option!

The pro membership hides all ads, plus gives you double the colors in the color bucket, and more awesome pro features!

**[Learn more, Memberships starting at \\$2.50/m!](#)**

**Follow me  
on Twitter!**

@ConvertingColor