

# Converting Colors

Hex(B87A86)

Have a look what the booklet for  
Hex(B87A86) contains.

<b>Hex(B87A86)</b> .....	3
<i><b>Conversions</b></i> .....	4
<i><b>Details</b></i> .....	6
<i><b>Harmonies</b></i> .....	11
<i><b>Previews</b></i> .....	23
<i><b>Color Blindness Simulation</b></i> .....	26
<i><b>CSS Examples</b></i> .....	29

# Color

Hex(**B87A86**)

# Conversions

## Conversions Part 1

<b>Format</b>	<b>Color</b>
Hex	<a href="#">B87A86</a>
RGB	<a href="#">184, 122, 134</a>
RGB Percent	<a href="#">72%, 48%, 53%</a>
CMY	<a href="#">0.2784, 0.5216, 0.4745</a>
CMYK	<a href="#">0.00, 0.34, 0.27, 0.28</a>
HSL	<a href="#">348°, 30%, 60%</a>
HSV	<a href="#">348°, 34%, 72%</a>
XYZ	<a href="#">31.0298, 25.8306, 25.9046</a>
YIQ	<a href="#">141.9060, 33.1000, 16.8760</a>

# Conversions

## Conversions Part 2

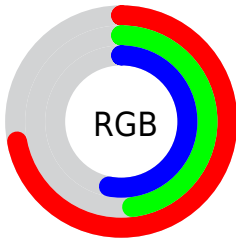
<b>Format</b>	<b>Color</b>
<b>RYB</b>	184, 122, 134
Decimal	12089990
CIELab	57.88, 25.85, 3.44
CIELCh	58, 26.082, 7.589
Yxy	25.8306, 0.3749, 0.3121
Android (android.graphics.Color)	4290280070 (0xFFB87A86)
YUV	141.9060, -3.8977, 36.9164
Hunter-Lab	50.8239, 20.0389, 5.3569

# Details

The Hex color **B87A86** is a dark color, and the websafe version is hex **996666**. A complement of this color would be **7AB8AC**, and the grayscale version is **8E8E8E**.

A 20% lighter version of the original color is **F1AFBB**, and **814855** is the 20% darker color. If you saturate the color by 10%, you get **B86877**, and if you desaturate by 10%, it is **B88C95**.

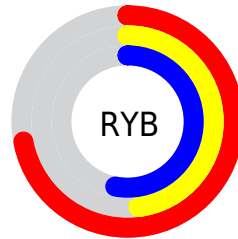
# Distribution



Red (72%)

Green (48%)

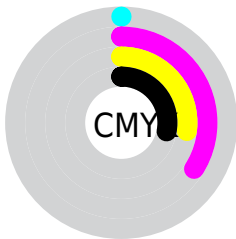
Blue (53%)



Red (72%)

Yellow (48%)

Blue (53%)

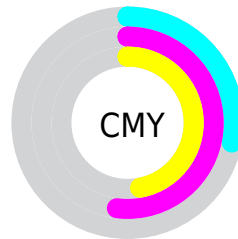


Cyan (0%)

Magenta (34%)

Yellow (27%)

Black (28%)



Cyan (28%)

Magenta (52%)

Yellow (47%)

# Brightness & Saturation Gradients

These gradients show how the Hex color B87A86 changes by changing the brightness by 10 percent. The first figure shows a shift by +10% for each color and the second figure -10%.

Similar to the brightness gradients but the following saturation gradients show a change of the Hex color B87A86 by changing the saturation by 10% instead.



 B87A86

 B87A86

FFFFFF

 9C616D

 F1AFBB

 814855

 FFCBD7

 67313D

 FFE7F3

 4E1A28

 350313

 1E0001

 000000

 B87A86

 B87A86

 B86877

 B88C95

 B85568

 B89FA4

 B84359

 B8B1B3

 B8304B

 B8C4C1

 B81E3C

 B8D6D0

 B80C2D

 B8E8DF

 B80024

 B8FBEE

 B8FFFD

 B8FFFF

# Harmonies

## Analogous

The Analogous color harmony consists of three colors that are next to each other on the color wheel.



AD7C9D



B87A86



B67D70

# Triad

The Triadic color harmony groups three colors that are evenly spaced from another and form a triangle on the color wheel.



B87A86



7C9266



5592B5

# Complementary

The Complementary color scheme is a pair of colors which are on the opposite of each other on the color wheel.



B87A86



7AB8AC

# Split Complementary

Split-complementary colors differ from the complementary color scheme. The scheme consists of three colors, the original color and two neighbors of the complement color.



4296A6



B87A86



629679

# Square

The Square scheme is like the rectangle color scheme, but the four colors are evenly spaced on the color wheel.



B87A86



958B5E



4A9890



768BB8

# Rectangle

The Rectangle color scheme consists of four colors that form a rectangle on the color wheel.



B87A86



AF8165



4A9890



4C94B1



# Sweetspot

The Sweet Spot groups the original color and five complimentary colors.



B87A86



F0D8DC



AC7AB8



78696C



F7F7F7



787878



# Same Dimension

The Same Dimension uses a secret algorithm to generate beautiful new colors.



B87A86



F090A2



B88D7A



5C5354



9C001E



1C0005



# Inverse Universe

The Inverse Universe completely reimagines the original color for something new.



B87A86



F090A2



7AA5B8



5C5354



9C001E

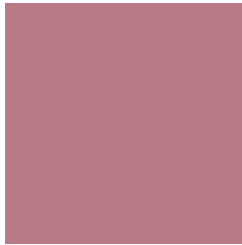


1C0005



# Previews

## White Background



This preview shows how the Hex color B87A86 looks on a white background.

## Color Contrast Check

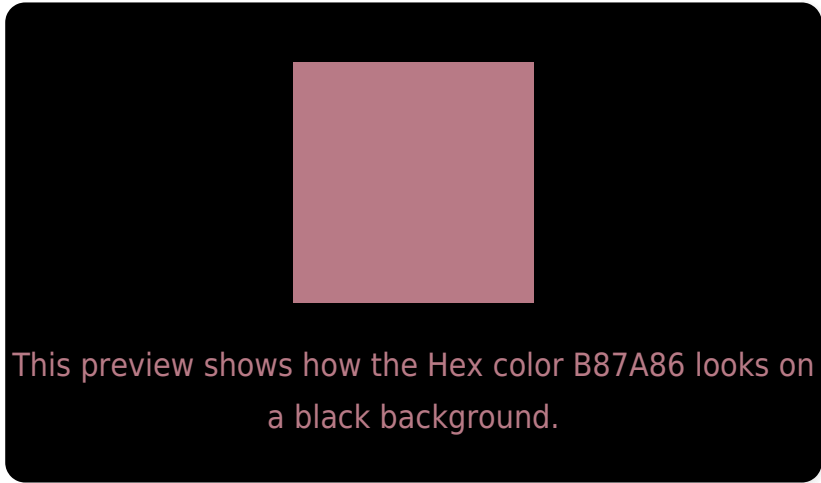
Large Text (above 18pt) WCAG AA ✓ Pass

Any Text WCAG AA × Fail

Large Text (above 18pt) WCAG AAA × Fail

Any Text WCAG AAA × Fail

# Black Background



## Color Contrast Check

Large Text (above 18pt) WCAG AA ✓ Pass

Any Text WCAG AA ✓ Pass

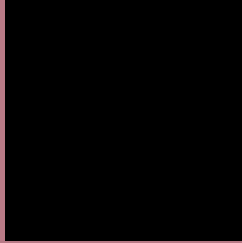
Large Text (above 18pt) WCAG AAA ✓ Pass

Any Text WCAG AAA × Fail

If you want to check with other color combinations, try the [Color Contrast Checker](#).



## Hex B87A86 Background



This preview shows how black text looks on a background with the Hex color B87A86.




This preview shows how white text looks on a background with the Hex color B87A86.

# Color Blindness Simulation

Color vision deficiency is a very complex topic, and I could not describe the different causes any better than Wikipedia does, so if you want to learn more, you should check out their [article about color blindness](#).

## Dichromacy





**Tritanopia**  
B87A84

# Trichromacy



**Original Color**  
B87A86

**Protanomaly**  
9D858C

**Deuteranomaly**  
A68285

**Tritanomaly**  
B87A85

# Monochromacy



**Original Color**  
B87A86

**Achromatopsia**  
8E8E8E

**Achromatomaly**  
9D878B

# CSS Examples

## Text

The CSS property to change the color of the text to Hex B87A86 is called "color". The color property can be set on classes, ids or directly on the HTML element.

This example shows how text in the color #B87A86 looks like.

```
.text, #text, p{  
    color:#B87A86  
}
```

If you want to add a text shadow in that color use the text-shadow property, you can generate a text shadow directly with our [CSS Text Shadow Generator](#).

Here you see how black text with a 4 pixel #B87A86 colored shadow looks like.

```
.shadow{ text-shadow: 4px 4px 2px #B87A86
}
```

## Border

The CSS property to change the border of an element to Hex B87A86 is called "border". The border property can be set on classes, ids or directly on the HTML element.

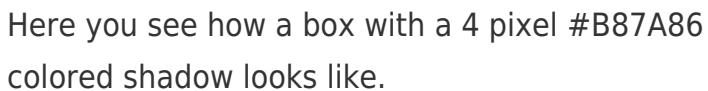
This example shows the color as border, it can be applied via the CSS property "border" or "border-color".

```
.border, #border, table{ border:4px solid
#B87A86 }
```

If only the border color should be changed use the property `border-color`.

```
.border{ border-color:#B87A86 }
```

If you want to add a box shadow in that color use:



Here you see how a box with a 4 pixel #B87A86 colored shadow looks like.

```
.boxshadow{ -moz-box-shadow:4px 4px 4px  
4px #B87A86; -webkit-box-shadow:4px 4px  
4px 4px #B87A86; box-shadow:4px 4px 4px  
4px #B87A86 }
```

# Background

The CSS property to change the background color of an element to Hex B87A86 is called "background". The background property can be set on classes, ids or directly on the HTML element.

```
.background, #background, body{  
background:#B87A86 }
```

If only the background color should be changed can be used:

```
.background{ background-color:#B87A86 }
```

This example shows the color as background, it is applied via the CSS property "background".

To optimize and compress your CSS code, you can use our [online CSS compressor and optimizer](#) based on csstidy. If you want to create a linear or radial gradient as background or border, check our [CSS Gradient Generator](#).



Hey! You found this booklet interesting? Support Converting Colors with the new Membership Option!

The pro membership hides all ads, plus gives you double the colors in the color bucket, and more awesome pro features!

**[Learn more, Memberships starting at \\$2.50/m!](#)**

**Follow me  
on Twitter!**

@ConvertingColor