

# Converting Colors

Hex(B87F53)

Have a look what the booklet for  
Hex(B87F53) contains.

<b>Hex(B87F53)</b> .....	3
<i><b>Conversions</b></i> .....	4
<i><b>Details</b></i> .....	6
<i><b>Harmonies</b></i> .....	11
<i><b>Previews</b></i> .....	23
<i><b>Color Blindness Simulation</b></i> .....	26
<i><b>CSS Examples</b></i> .....	29

**Color**

**Hex(B87F53)**

# Conversions

## Conversions Part 1

<b>Format</b>	<b>Color</b>
Hex	B87F53
RGB	184, 127, 83
RGB Percent	72%, 50%, 33%
CMY	0.2784, 0.5020, 0.6745
CMYK	0.00, 0.31, 0.55, 0.28
HSL	26°, 42%, 52%
HSV	26°, 55%, 72%
XYZ	28.9179, 25.9936, 11.6767
YIQ	139.0270, 48.0960, -1.6000

# Conversions

## Conversions Part 2

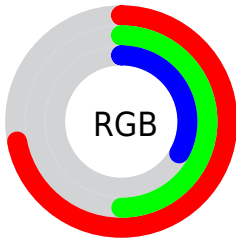
<b>Format</b>	<b>Color</b>
<b>RYB</b>	184, 161, 83
Decimal	12091219
CIELab	58.03, 17.19, 32.62
CIElCh	58, 36.871, 62.211
Yxy	25.9936, 0.4343, 0.3904
Android (android.graphics.Color)	4290281299 (0xFFB87F53)
YUV	139.0270, -27.6213, 39.4413
Hunter-Lab	50.9839, 12.0225, 22.1097

# Details

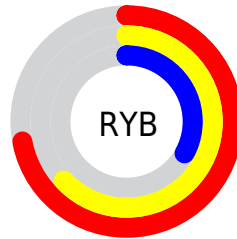
The Hex color **B87F53** is a dark color, and the websafe version is hex **CC9966**. A complement of this color would be **538CB8**, and the grayscale version is **8B8B8B**.

A 20% lighter version of the original color is **F3B485**, and **804E24** is the 20% darker color. If you saturate the color by 10%, you get **B87541**, and if you desaturate by 10%, it is **B88965**.

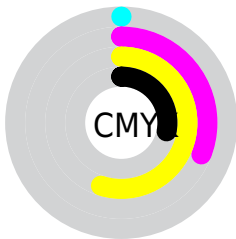
# Distribution



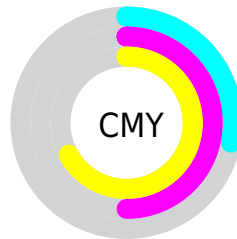
- Red (72%)
- Green (50%)
- Blue (33%)



- Red (72%)
- Yellow (63%)
- Blue (33%)



- Cyan (0%)
- Magenta (31%)
- Yellow (55%)
- Black (28%)



- Cyan (28%)
- Magenta (50%)
- Yellow (67%)

# Brightness & Saturation Gradients

These gradients show how the Hex color B87F53 changes by changing the brightness by 10 percent. The first figure shows a shift by +10% for each color and the second figure -10%.

Similar to the brightness gradients but the following saturation gradients show a change of the Hex color B87F53 by changing the saturation by 10% instead.



 B87F53

 B87F53

FFFFFF

 9C663B

 F3B485

 804E24

 FFCFA0

 65370E

 FFECBB

 4B2100

 FFFFD7

 300C00

 FFFFF3

 140000

 000000

 B87F53

 B87F53

 B87541

 B88965

 B86A2E

 B89478

 B8601C

 B89E8A

 B85509

 B8A99D

 B85000

 B8B3AF

 B8BDC1

 B8C8D4

 B8D2E6

 B8DCF9

# Harmonies

## Analogous

The Analogous color harmony consists of three colors that are next to each other on the color wheel.



C7756B



B87F53



9E8A4A

# Triad

The Triadic color harmony groups three colors that are evenly spaced from another and form a triangle on the color wheel.



B87F53



179C8D



9282C2

# Complementary

The Complementary color scheme is a pair of colors which are on the opposite of each other on the color wheel.



B87F53



538CB8

# Split Complementary

Split-complementary colors differ from the complementary color scheme. The scheme consists of three colors, the original color and two neighbors of the complement color.



5D8ECC



B87F53



009BAD

# Square

The Square scheme is like the rectangle color scheme, but the four colors are evenly spaced on the color wheel.



B87F53



549A6C



0097C4



B677AA

# Rectangle

The Rectangle color scheme consists of four colors that form a rectangle on the color wheel.



B87F53



88914E



0097C4



8286C7



# Sweetspot

The Sweet Spot groups the original color and five complimentary colors.



B87F53



F0DAC9



B8538C



786B61



F7F7F7



787878



# Same Dimension

The Same Dimension uses a secret algorithm to generate beautiful new colors.



B87F53



F09651



B8B153



5C5753



9C4400



1C0C00



# Inverse Universe

The Inverse Universe completely reimagines the original color for something new.



538CB8



51ABF0



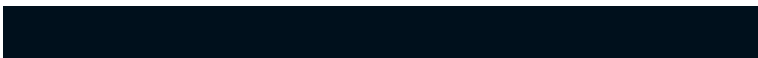
535AB8



53585C



00589C

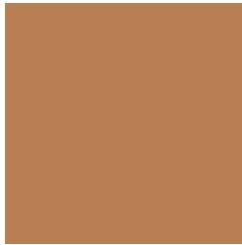


00101C



# Previews

## White Background



This preview shows how the Hex color B87F53 looks on a white background.

## Color Contrast Check

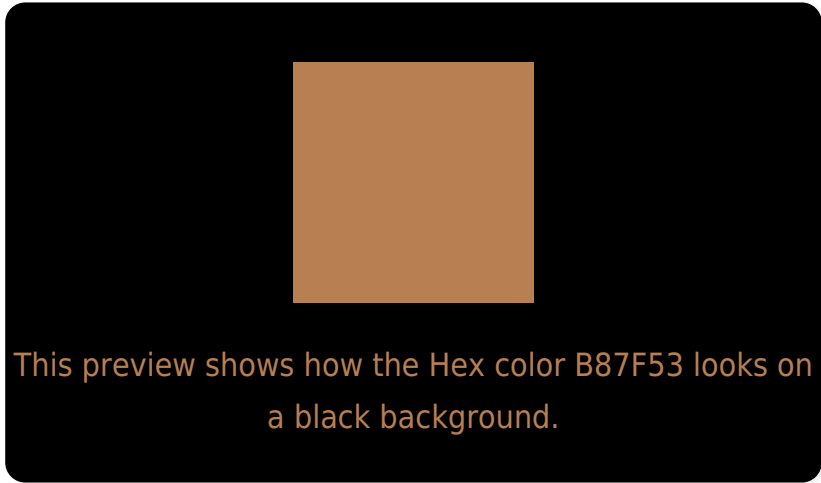
Large Text (above 18pt) WCAG AA ✓ Pass

Any Text WCAG AA × Fail

Large Text (above 18pt) WCAG AAA × Fail

Any Text WCAG AAA × Fail

# Black Background



## Color Contrast Check

Large Text (above 18pt) WCAG AA ✓ Pass

Any Text WCAG AA ✓ Pass

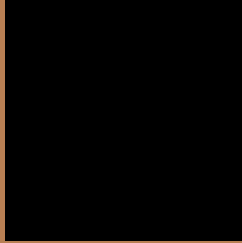
Large Text (above 18pt) WCAG AAA ✓ Pass

Any Text WCAG AAA × Fail

If you want to check with other color combinations, try the [Color Contrast Checker](#).



## Hex B87F53 Background



This preview shows how black text looks on a background with the Hex color B87F53.



This preview shows how white text looks on a background with the Hex color B87F53.

# Color Blindness Simulation

Color vision deficiency is a very complex topic, and I could not describe the different causes any better than Wikipedia does, so if you want to learn more, you should check out their [article about color blindness](#).

## Dichromacy



**Original Color**  
B87F53

**Protanopia**  
988C58

**Deuteranopia**  
AA8552



# Trichromacy



**Original Color**  
B87F53

**Protanomaly**  
A48756

**Deuteranomaly**  
AF8352

**Tritanomaly**  
BB7B71

# Monochromacy



**Original Color**  
B87F53

**Achromatopsia**  
8B8B8B

**Achromatomaly**  
9B8777

# CSS Examples

## Text

The CSS property to change the color of the text to Hex B87F53 is called "color". The color property can be set on classes, ids or directly on the HTML element.

This example shows how text in the color #B87F53 looks like.

```
.text, #text, p{  
    color:#B87F53  
}
```

If you want to add a text shadow in that color use the text-shadow property, you can generate a text shadow directly with our [CSS Text Shadow Generator](#).

Here you see how black text with a 4 pixel #B87F53 colored shadow looks like.

```
.shadow{ text-shadow: 4px 4px 2px #B87F53
}
```

## Border

The CSS property to change the border of an element to Hex B87F53 is called "border". The border property can be set on classes, ids or directly on the HTML element.

This example shows the color as border, it can be applied via the CSS property "border" or "border-color".

```
.border, #border, table{ border:4px solid
#B87F53 }
```

If only the border color should be changed use the property `border-color`.

```
.border{ border-color:#B87F53 }
```

If you want to add a box shadow in that color use:

Here you see how a box with a 4 pixel #B87F53 colored shadow looks like.

```
.boxshadow{ -moz-box-shadow:4px 4px 4px  
4px #B87F53; -webkit-box-shadow:4px 4px  
4px 4px #B87F53; box-shadow:4px 4px 4px  
4px #B87F53 }
```

# Background

The CSS property to change the background color of an element to Hex B87F53 is called "background". The background property can be set on classes, ids or directly on the HTML element.

```
.background, #background, body{  
background:#B87F53 }
```

If only the background color should be changed can be used:

```
.background{ background-color:#B87F53 }
```

This example shows the color as background, it is applied via the CSS property "background".

To optimize and compress your CSS code, you can use our [online CSS compressor and optimizer](#) based on csstidy. If you want to create a linear or radial gradient as background or border, check our [CSS Gradient Generator](#).



Hey! You found this booklet interesting? Support Converting Colors with the new Membership Option!

The pro membership hides all ads, plus gives you double the colors in the color bucket, and more awesome pro features!

**[Learn more, Memberships starting at \\$2.50/m!](#)**

**Follow me  
on Twitter!**

@ConvertingColor