

Converting Colors

Hex(B88188)

Have a look what the booklet for
Hex(B88188) contains.

Hex(B88188)	3
<i>Conversions</i>	4
<i>Details</i>	6
<i>Harmonies</i>	11
<i>Previews</i>	23
<i>Color Blindness Simulation</i>	26
<i>CSS Examples</i>	29

Color

Hex(B88188)

Conversions

Conversions Part 1

Format	Color
Hex	B88188
RGB	184, 129, 136
RGB Percent	72%, 51%, 53%
CMY	0.2784, 0.4941, 0.4667
CMYK	0.00, 0.30, 0.26, 0.28
HSL	352°, 28%, 61%
HSV	352°, 30%, 72%
XYZ	32.0614, 27.6684, 26.9433
YIQ	146.2430, 30.5330, 13.8370

Conversions

Conversions Part 2

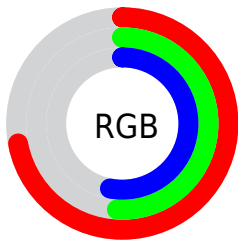
Format	Color
RYB	184, 129, 136
Decimal	12091784
CIELab	59.59, 22.25, 4.76
CIELCh	60, 22.751, 12.081
Yxy	27.6684, 0.3699, 0.3192
Android (android.graphics.Color)	4290281864 (0xFFB88188)
YUV	146.2430, -5.0498, 33.1129
Hunter-Lab	52.6008, 16.7483, 6.4509

Details

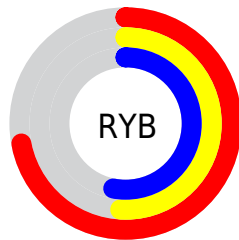
The Hex color **B88188** is a light color, and the websafe version is hex **CC9999**. A complement of this color would be **81B8B1**, and the grayscale version is **929292**.

A 20% lighter version of the original color is **F1B6BD**, and **824F56** is the 20% darker color. If you saturate the color by 10%, you get **B86F78**, and if you desaturate by 10%, it is **B89398**.

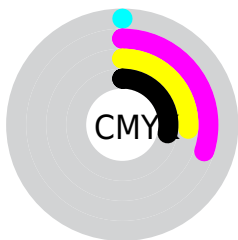
Distribution



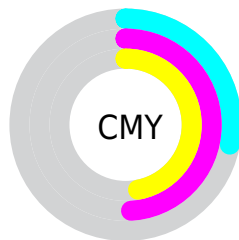
- Red (72%)
- Green (51%)
- Blue (53%)



- Red (72%)
- Yellow (51%)
- Blue (53%)



- Cyan (0%)
- Magenta (30%)
- Yellow (26%)
- Black (28%)



- Cyan (28%)
- Magenta (49%)
- Yellow (47%)

Brightness & Saturation Gradients

These gradients show how the Hex color B88188 changes by changing the brightness by 10 percent. The first figure shows a shift by +10% for each color and the second figure -10%.

Similar to the brightness gradients but the following saturation gradients show a change of the Hex color B88188 by changing the saturation by 10% instead.

 B88188

 B88188

FFFFFF

 9C686F

 F1B6BD

 824F56

 FFD2D9

 68383F

 FFEEF5


 4E2129

 360B15

 220001

 000000

 B88188

 B88188

 B86F78

 B89398

 B85C68

 B8A6A8

 B84A58

 B8B8B8

 B83748

 B8CBC8

 B82538

 B8DDD8

 B81328

 B8EFE8

 B80018

 B8FFF8

 B80017

 B8FFFF

Harmonies

Analogous

The Analogous color harmony consists of three colors that are next to each other on the color wheel.



B0829C



B88188



B58476

Triad

The Triadic color harmony groups three colors that are evenly spaced from another and form a triangle on the color wheel.



B88188



7F9671



6795B5

Complementary

The Complementary color scheme is a pair of colors which are on the opposite of each other on the color wheel.



B88188



81B8B1

Split Complementary

Split-complementary colors differ from the complementary color scheme. The scheme consists of three colors, the original color and two neighbors of the complement color.



5599AA



B88188



699A83

Square

The Square scheme is like the rectangle color scheme, but the four colors are evenly spaced on the color wheel.



B88188



969168



589B97



828FB6

Rectangle

The Rectangle color scheme consists of four colors that form a rectangle on the color wheel.



B88188



AE886D



589B97



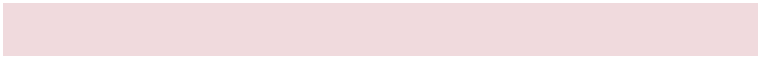
5F97B2

Sweetspot

The Sweet Spot groups the original color and five complimentary colors.



B88188



F0DADD



B181B8



786B6C



F7F7F7



787878

Same Dimension

The Same Dimension uses a secret algorithm to generate beautiful new colors.



B88188



F099A4



B89581



5C5354



9C0014



1C0004

Inverse Universe

The Inverse Universe completely reimagines the original color for something new.



B88188



F099A4



81A4B8



5C5354



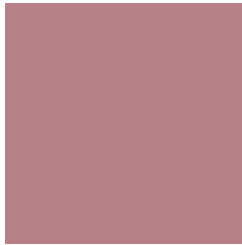
9C0014



1C0004

Previews

White Background



This preview shows how the Hex color B88188 looks on a white background.

Color Contrast Check

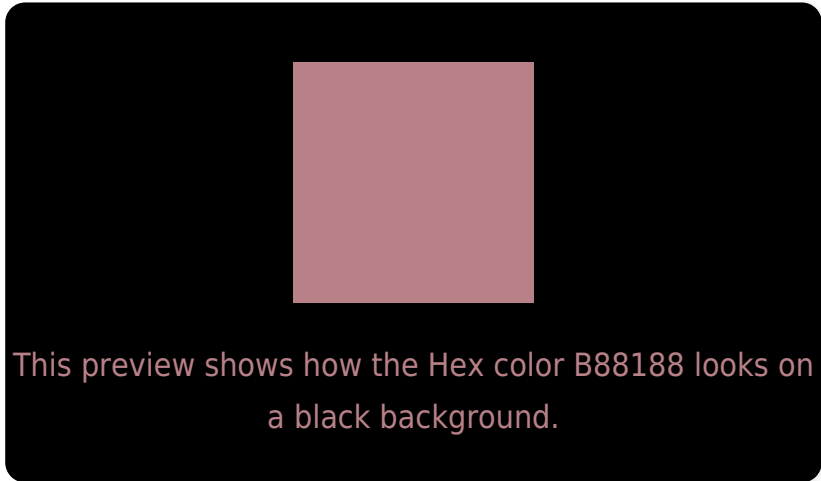
Large Text (above 18pt) WCAG AA ✓ Pass

Any Text WCAG AA ✗ Fail

Large Text (above 18pt) WCAG AAA ✗ Fail

Any Text WCAG AAA ✗ Fail

Black Background



Color Contrast Check

Large Text (above 18pt) WCAG AA ✓ Pass

Any Text WCAG AA ✓ Pass

Large Text (above 18pt) WCAG AAA ✓ Pass

Any Text WCAG AAA × Fail

If you want to check with other color combinations, try the [Color Contrast Checker](#).

Hex B88188 Background



This preview shows how black text looks on a background with the Hex color B88188.



This preview shows how white text looks on a background with the Hex color B88188.

Color Blindness Simulation

Color vision deficiency is a very complex topic, and I could not describe the different causes any better than Wikipedia does, so if you want to learn more, you should check out their [article about color blindness](#).


Dichromacy



Original Color
B88188

Protanopia
928F90

Deuteranopia
A18B86



Tritanopia
B8818A

Trichromacy



Original Color
B88188

Protanomaly
A08A8D

Deuteranomaly
A98787

Tritanomaly
B88189

Monochromacy



Original Color
B88188

Achromatopsia
929292

Achromatomaly
A08C8E

CSS Examples

Text

The CSS property to change the color of the text to Hex B88188 is called "color". The color property can be set on classes, ids or directly on the HTML element.

This example shows how text in the color #B88188 looks like.

```
.text, #text, p{  
    color:#B88188  
}
```

If you want to add a text shadow in that color use the text-shadow property, you can generate a text shadow directly with our [CSS Text Shadow Generator](#).

Here you see how black text with a 4 pixel #B88188 colored shadow looks like.

```
.shadow{ text-shadow: 4px 4px 2px #B88188
}
```

Border

The CSS property to change the border of an element to Hex B88188 is called "border". The border property can be set on classes, ids or directly on the HTML element.

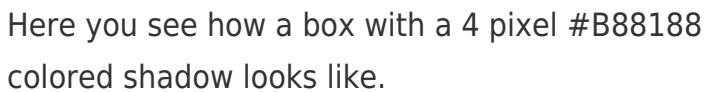
This example shows the color as border, it can be applied via the CSS property "border" or "border-color".

```
.border, #border, table{ border:4px solid
#B88188 }
```

If only the border color should be changed use the property `border-color`.

```
.border{ border-color:#B88188 }
```

If you want to add a box shadow in that color use:



Here you see how a box with a 4 pixel #B88188 colored shadow looks like.

```
.boxshadow{ -moz-box-shadow:4px 4px 4px  
4px #B88188; -webkit-box-shadow:4px 4px  
4px 4px #B88188; box-shadow:4px 4px 4px  
4px #B88188 }
```

Background

The CSS property to change the background color of an element to Hex B88188 is called "background". The background property can be set on classes, ids or directly on the HTML element.

```
.background, #background, body{  
background:#B88188 }
```

If only the background color should be changed can be used:

```
.background{ background-color:#B88188 }
```

This example shows the color as background, it is applied via the CSS property "background".

To optimize and compress your CSS code, you can use our [online CSS compressor and optimizer](#) based on csstidy. If you want to create a linear or radial gradient as background or border, check our [CSS Gradient Generator](#).

Hey! You found this booklet interesting? Support Converting Colors with the new Membership Option!

The pro membership hides all ads, plus gives you double the colors in the color bucket, and more awesome pro features!

[Learn more, Memberships starting at \\$2.50/m!](#)

**Follow me
on Twitter!**

@ConvertingColor