

Converting Colors

Hex(B88377)

Have a look what the booklet for
Hex(B88377) contains.

Hex(B88377)	3
<i>Conversions</i>	4
<i>Details</i>	6
<i>Harmonies</i>	11
<i>Previews</i>	23
<i>Color Blindness Simulation</i>	26
<i>CSS Examples</i>	29

Color

Hex(B88377)

Conversions

Conversions Part 1

Format	Color
Hex	B88377
RGB	184, 131, 119
RGB Percent	72%, 51%, 47%
CMY	0.2784, 0.4863, 0.5333
CMYK	0.00, 0.29, 0.35, 0.28
HSL	11°, 31%, 59%
HSV	11°, 35%, 72%
XYZ	31.2132, 27.7549, 21.1649
YIQ	145.4790, 35.4400, 7.5040

Conversions

Conversions Part 2

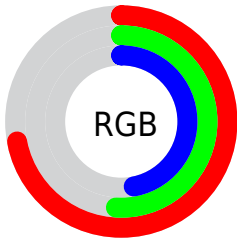
Format	Color
R_{YB}	184, 134, 119
Decimal	12092279
CIE Lab	59.67, 18.81, 14.60
CIE LCh	60, 23.816, 37.824
Yxy	27.7549, 0.3895, 0.3464
Android (android.graphics.Color)	4290282359 (0xFFB88377)
YUV	145.4790, -13.0541, 33.7829
Hunter-Lab	52.6829, 13.5616, 13.0588

Details

The Hex color **B88377** is a dark color, and the websafe version is hex **CC9999**. A complement of this color would be **77ACB8**, and the grayscale version is **929292**.

A 20% lighter version of the original color is **F1B8AB**, and **815147** is the 20% darker color. If you saturate the color by 10%, you get **B87465**, and if you desaturate by 10%, it is **B89289**.

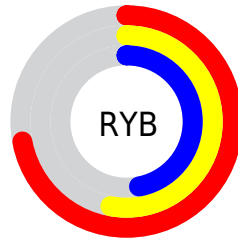
Distribution



Red (72%)

Green (51%)

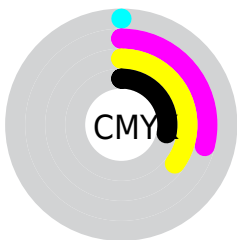
Blue (47%)



Red (72%)

Yellow (53%)

Blue (47%)

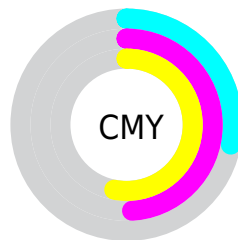


Cyan (0%)

Magenta (29%)

Yellow (35%)

Black (28%)



Cyan (28%)

Magenta (49%)

Yellow (53%)

Brightness & Saturation Gradients

These gradients show how the Hex color B88377 changes by changing the brightness by 10 percent. The first figure shows a shift by +10% for each color and the second figure -10%.

Similar to the brightness gradients but the following saturation gradients show a change of the Hex color B88377 by changing the saturation by 10% instead.

 B88377

 B88377

FFFFFF

 9C6A5E

 F1B8AB

 815147

 FFD4C7

 673A30

 FFF0E3

 4D241B

 350E01

 1F0001

 000000

 B88377

 B88377

 B87465

 B89289

 B86552

 B8A19C

 B85640

 B8B0AE

 B8472D

 B8BFC1

 B8381B

 B8CED3

 B82909

 B8DDE5

 B82200

 B8ECF8

 B8FBFF

 B8FFFF

Harmonies

Analogous

The Analogous color harmony consists of three colors that are next to each other on the color wheel.



B9808B



B88377



AC8969

Triad

The Triadic color harmony groups three colors that are evenly spaced from another and form a triangle on the color wheel.



B88377



6A9A7F



7D90B9

Complementary

The Complementary color scheme is a pair of colors which are on the opposite of each other on the color wheel.



B88377



77ACB8

Split Complementary

Split-complementary colors differ from the complementary color scheme. The scheme consists of three colors, the original color and two neighbors of the complement color.



6196B6



B88377



569B95

Square

The Square scheme is like the rectangle color scheme, but the four colors are evenly spaced on the color wheel.



B88377



82966E



519AA9



9A88B1

Rectangle

The Rectangle color scheme consists of four colors that form a rectangle on the color wheel.



B88377



A08E66



519AA9



7392B9

Sweetspot

The Sweet Spot groups the original color and five complimentary colors.



B88377



F0DAD5



B877AC



786B68



F7F7F7



787878

Same Dimension

The Same Dimension uses a secret algorithm to generate beautiful new colors.



B88377



F09E8B



B8A377



5C5453



9C1D00



1C0500

Inverse Universe

The Inverse Universe completely reimagines the original color for something new.



77ACB8



8BDDF0



778CB8



535A5C



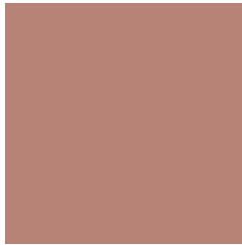
007F9C



00171C

Previews

White Background



This preview shows how the Hex color B88377 looks on a white background.

Color Contrast Check

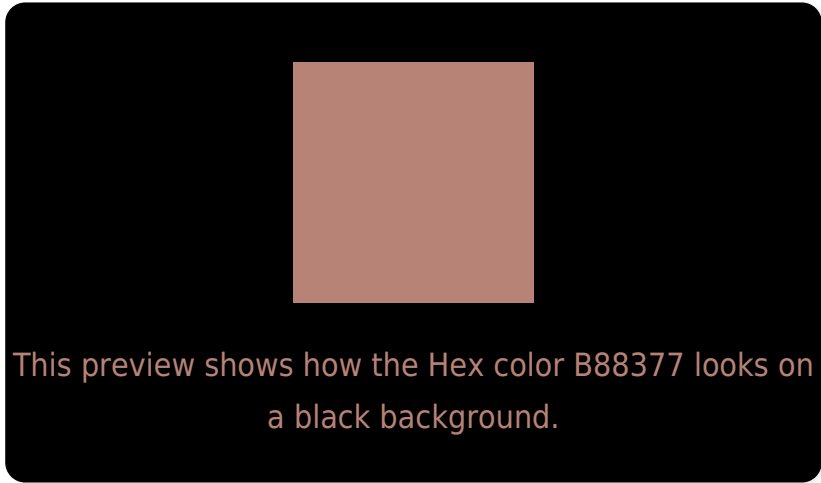
Large Text (above 18pt) WCAG AA ✓ Pass

Any Text WCAG AA × Fail

Large Text (above 18pt) WCAG AAA × Fail

Any Text WCAG AAA × Fail

Black Background



Color Contrast Check

Large Text (above 18pt) WCAG AA ✓ Pass

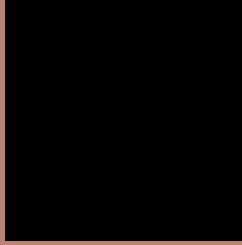
Any Text WCAG AA ✓ Pass

Large Text (above 18pt) WCAG AAA ✓ Pass

Any Text WCAG AAA × Fail

If you want to check with other color combinations, try the [Color Contrast Checker](#).

Hex B88377 Background



This preview shows how black text looks on a background with the Hex color B88377.

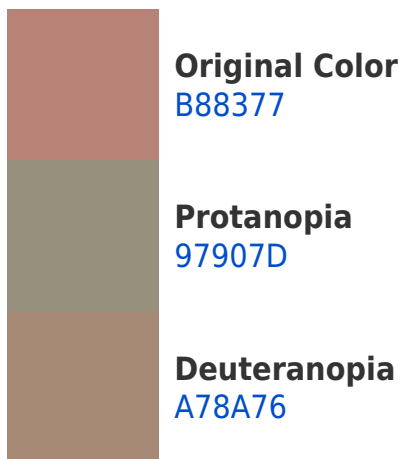



This preview shows how white text looks on a background with the Hex color B88377.

Color Blindness Simulation

Color vision deficiency is a very complex topic, and I could not describe the different causes any better than Wikipedia does, so if you want to learn more, you should check out their [article about color blindness](#).

Dichromacy





Tritanopia
BA808A

Trichromacy



Original Color
B88377

Protanomaly
A38B7B

Deuteranomaly
AD8776

Tritanomaly
B98183

Monochromacy



Original Color
B88377

Achromatopsia
919191

Achromatomaly
9F8C88

CSS Examples

Text

The CSS property to change the color of the text to Hex B88377 is called "color". The color property can be set on classes, ids or directly on the HTML element.

This example shows how text in the color #B88377 looks like.

```
.text, #text, p{  
    color:#B88377  
}
```

If you want to add a text shadow in that color use the text-shadow property, you can generate a text shadow directly with our [CSS Text Shadow Generator](#).

Here you see how black text with a 4 pixel #B88377 colored shadow looks like.

```
.shadow{ text-shadow: 4px 4px 2px #B88377  
}
```

Border

The CSS property to change the border of an element to Hex B88377 is called "border". The border property can be set on classes, ids or directly on the HTML element.

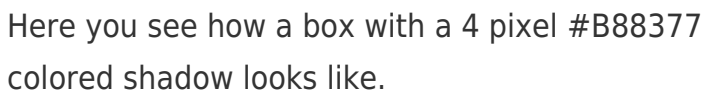
This example shows the color as border, it can be applied via the CSS property "border" or "border-color".

```
.border, #border, table{ border:4px solid  
#B88377 }
```

If only the border color should be changed use the property `border-color`.

```
.border{ border-color:#B88377 }
```

If you want to add a box shadow in that color use:



Here you see how a box with a 4 pixel #B88377 colored shadow looks like.

```
.boxshadow{ -moz-box-shadow:4px 4px 4px  
4px #B88377; -webkit-box-shadow:4px 4px  
4px 4px #B88377; box-shadow:4px 4px 4px  
4px #B88377 }
```

Background

The CSS property to change the background color of an element to Hex B88377 is called "background". The background property can be set on classes, ids or directly on the HTML element.

```
.background, #background, body{  
background:#B88377 }
```

If only the background color should be changed can be used:

```
.background{ background-color:#B88377 }
```

This example shows the color as background, it is applied via the CSS property "background".

To optimize and compress your CSS code, you can use our [online CSS compressor and optimizer](#) based on csstidy. If you want to create a linear or radial gradient as background or border, check our [CSS Gradient Generator](#).

Hey! You found this booklet interesting? Support Converting Colors with the new Membership Option!

The pro membership hides all ads, plus gives you double the colors in the color bucket, and more awesome pro features!

[Learn more, Memberships starting at \\$2.50/m!](#)

**Follow me
on Twitter!**

@ConvertingColor