

Converting Colors

Hex(B8844C)

Have a look what the booklet for
Hex(B8844C) contains.

Hex(B8844C)	3
<i>Conversions</i>	4
<i>Details</i>	6
<i>Harmonies</i>	11
<i>Previews</i>	23
<i>Color Blindness Simulation</i>	26
<i>CSS Examples</i>	29

Color

Hex(B8844C)

Conversions

Conversions Part 1

Format	Color
Hex	B8844C
RGB	184, 132, 76
RGB Percent	72%, 52%, 30%
CMY	0.2784, 0.4824, 0.7020
CMYK	0.00, 0.28, 0.59, 0.28
HSL	31°, 43%, 51%
HSV	31°, 59%, 72%
XYZ	29.3229, 27.2147, 10.5449
YIQ	141.1640, 48.9680, -6.3920

Conversions

Conversions Part 2

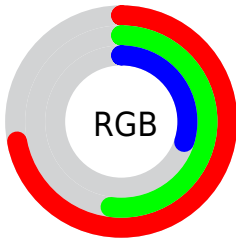
Format	Color
R_{YB}	176, 184, 76
Decimal	12092492
CIE _{Lab}	59.17, 13.83, 37.76
CIE _{LCh}	59, 40.216, 69.882
Y _{xy}	27.2147, 0.4371, 0.4057
Android (android.graphics.Color)	4290282572 (0xFFB8844C)
YUV	141.1640, -32.1259, 37.5672
Hunter-Lab	52.1677, 9.0396, 24.5328

Details

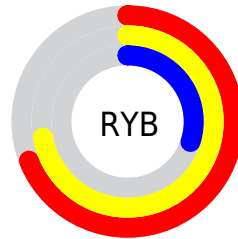
The Hex color **B8844C** is a dark color, and the websafe version is hex **CC9966**. A complement of this color would be **4C80B8**, and the grayscale version is **8D8D8D**.

A 20% lighter version of the original color is **F3B97E**, and **80531D** is the 20% darker color. If you saturate the color by 10%, you get **B87B3A**, and if you desaturate by 10%, it is **B88D5E**.

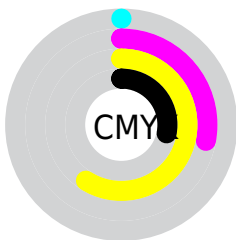
Distribution



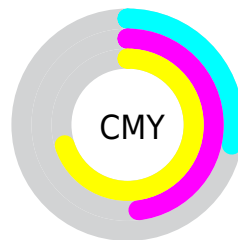
- Red (72%)
- Green (52%)
- Blue (30%)



- Red (69%)
- Yellow (72%)
- Blue (30%)



- Cyan (0%)
- Magenta (28%)
- Yellow (59%)
- Black (28%)



- Cyan (28%)
- Magenta (48%)
- Yellow (70%)

Brightness & Saturation Gradients

These gradients show how the Hex color B8844C changes by changing the brightness by 10 percent. The first figure shows a shift by +10% for each color and the second figure -10%.

Similar to the brightness gradients but the following saturation gradients show a change of the Hex color B8844C by changing the saturation by 10% instead.

 B8844C

 B8844C

FFFFFF

 9C6B34

 F3B97E

 80531D

 FFD599

 643B03

 FFF1B4

 4A2500

 FFFFD0

 301100

 FFFFEC

 160000

 000000

 B8844C

 B8844C

 B87B3A

 B88D5E

 B87227

 B89671

 B86915

 B89F83

 B86102

 B8A796

 B85F00

 B8B0A8

 B8B9BA

 B8C2CD

 B8CBDF

 B8D4F2

Harmonies

Analogous

The Analogous color harmony consists of three colors that are next to each other on the color wheel.



CC7863



B8844C



999047

Triad

The Triadic color harmony groups three colors that are evenly spaced from another and form a triangle on the color wheel.



B8844C



00A199



A181C5

Complementary

The Complementary color scheme is a pair of colors which are on the opposite of each other on the color wheel.



B8844C



4C80B8

Split Complementary

Split-complementary colors differ from the complementary color scheme. The scheme consists of three colors, the original color and two neighbors of the complement color.



6B8ED4



B8844C



009FBB

Square

The Square scheme is like the rectangle color scheme, but the four colors are evenly spaced on the color wheel.



B8844C



429F75



0099D0



C375A8

Rectangle

The Rectangle color scheme consists of four colors that form a rectangle on the color wheel.



B8844C



80974F



0099D0



9185CC

Sweetspot

The Sweet Spot groups the original color and five complimentary colors.



B8844C



F0DBC5



B84C80



786B5D



F7F7F7



787878

Same Dimension

The Same Dimension uses a secret algorithm to generate beautiful new colors.



B8844C



F09F48



B6B84C



5C5753



9C5100



1C0F00

Inverse Universe

The Inverse Universe completely reimagines the original color for something new.



4C80B8



4899F0



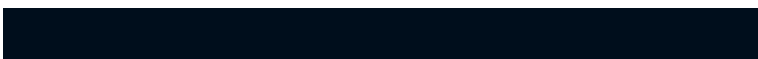
4E4CB8



53575C



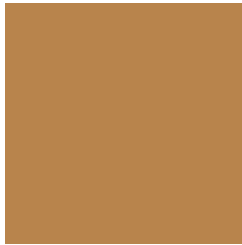
004B9C



000E1C

Previews

White Background



This preview shows how the Hex color B8844C looks on a white background.

Color Contrast Check

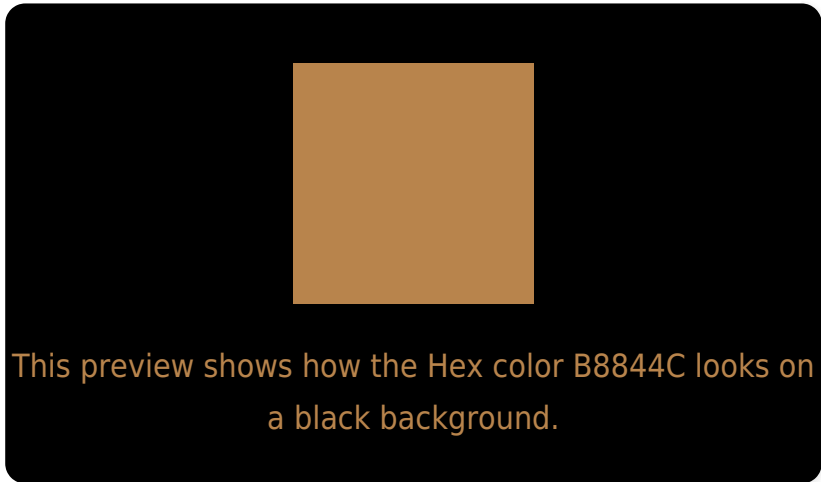
Large Text (above 18pt) WCAG AA ✓ Pass

Any Text WCAG AA × Fail

Large Text (above 18pt) WCAG AAA × Fail

Any Text WCAG AAA × Fail

Black Background



Color Contrast Check

Large Text (above 18pt) WCAG AA ✓ Pass

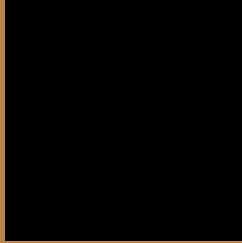
Any Text WCAG AA ✓ Pass

Large Text (above 18pt) WCAG AAA ✓ Pass

Any Text WCAG AAA × Fail

If you want to check with other color combinations, try the [Color Contrast Checker](#).

Hex B8844C Background



This preview shows how black text looks on a background with the Hex color B8844C.



This preview shows how white text looks on a background with the Hex color B8844C.

Color Blindness Simulation

Color vision deficiency is a very complex topic, and I could not describe the different causes any better than Wikipedia does, so if you want to learn more, you should check out their [article about color blindness](#).

Dichromacy





Tritanopia
BD7D87

Trichromacy



Original Color
B8844C

Protanomaly
A78B4F

Deuteranomaly
B2874B

Tritanomaly
BB8072

Monochromacy



Original Color
B8844C

Achromatopsia
8D8D8D

Achromatomaly
9D8A75

CSS Examples

Text

The CSS property to change the color of the text to Hex B8844C is called "color". The color property can be set on classes, ids or directly on the HTML element.

This example shows how text in the color #B8844C looks like.

```
.text, #text, p{  
    color:#B8844C  
}
```

If you want to add a text shadow in that color use the text-shadow property, you can generate a text shadow directly with our [CSS Text Shadow Generator](#).

Here you see how black text with a 4 pixel #B8844C colored shadow looks like.

```
.shadow{ text-shadow: 4px 4px 2px #B8844C
}
```

Border

The CSS property to change the border of an element to Hex B8844C is called "border". The border property can be set on classes, ids or directly on the HTML element.

This example shows the color as border, it can be applied via the CSS property "border" or "border-color".

```
.border, #border, table{ border:4px solid
#B8844C }
```

If only the border color should be changed use the property `border-color`.

```
.border{ border-color:#B8844C }
```

If you want to add a box shadow in that color use:

Here you see how a box with a 4 pixel #B8844C colored shadow looks like.

```
.boxshadow{ -moz-box-shadow:4px 4px 4px  
4px #B8844C; -webkit-box-shadow:4px 4px  
4px 4px #B8844C; box-shadow:4px 4px 4px  
4px #B8844C }
```

Background

The CSS property to change the background color of an element to Hex B8844C is called "background". The background property can be set on classes, ids or directly on the HTML element.

```
.background, #background, body{  
background:#B8844C }
```

If only the background color should be changed can be used:

```
.background{ background-color:#B8844C }
```

This example shows the color as background, it is applied via the CSS property "background".

To optimize and compress your CSS code, you can use our [online CSS compressor and optimizer](#) based on csstidy. If you want to create a linear or radial gradient as background or border, check our [CSS Gradient Generator](#).

Hey! You found this booklet interesting? Support Converting Colors with the new Membership Option!

The pro membership hides all ads, plus gives you double the colors in the color bucket, and more awesome pro features!

[Learn more, Memberships starting at \\$2.50/m!](#)

**Follow me
on Twitter!**

@ConvertingColor