

# Converting Colors

Hex(B8865A)

Have a look what the booklet for  
Hex(B8865A) contains.

<b>Hex(B8865A)</b> .....	3
<b><i>Conversions</i></b> .....	4
<b><i>Details</i></b> .....	6
<b><i>Harmonies</i></b> .....	11
<b><i>Previews</i></b> .....	23
<b><i>Color Blindness Simulation</i></b> .....	26
<b><i>CSS Examples</i></b> .....	29

**Color**

**Hex(B8865A)**

# Conversions

## Conversions Part 1

<b>Format</b>	<b>Color</b>
Hex	B8865A
RGB	184, 134, 90
RGB Percent	72%, 53%, 35%
CMY	0.2784, 0.4745, 0.6471
CMYK	0.00, 0.27, 0.51, 0.28
HSL	28°, 40%, 54%
HSV	28°, 51%, 72%
XYZ	30.1377, 27.9787, 13.4849
YIQ	143.9340, 43.9240, -3.0840

# Conversions

## Conversions Part 2

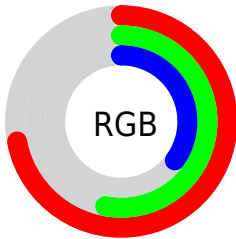
<b>Format</b>	<b>Color</b>
<a href="#">RYB</a>	<a href="#">184, 173, 90</a>
Decimal	<a href="#">12093018</a>
CIELab	<a href="#">59.87, 13.93, 31.12</a>
CIELCh	<a href="#">60, 34.093, 65.886</a>
Yxy	<a href="#">27.9787, 0.4209, 0.3908</a>
Android (android.graphics.Color)	<a href="#">4290283098</a> ( <a href="#">0xFFB8865A</a> )
YUV	<a href="#">143.9340, -26.5895, 35.1379</a>
Hunter-Lab	<a href="#">52.8949, 9.1371, 21.9112</a>

# Details

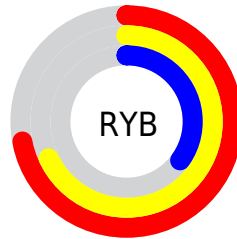
The Hex color **B8865A** is a dark color, and the websafe version is hex **CC9966**. A complement of this color would be **5A8CB8**, and the grayscale version is **909090**.

A 20% lighter version of the original color is **F2BB8D**, and **80542B** is the 20% darker color. If you saturate the color by 10%, you get **B87C48**, and if you desaturate by 10%, it is **B8906C**.

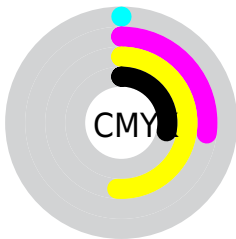
# Distribution



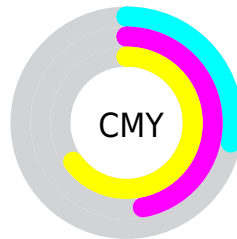
- Red (72%)
- Green (53%)
- Blue (35%)



- Red (72%)
- Yellow (68%)
- Blue (35%)



- Cyan (0%)
- Magenta (27%)
- Yellow (51%)
- Black (28%)



- Cyan (28%)
- Magenta (47%)
- Yellow (65%)

# Brightness & Saturation Gradients

These gradients show how the Hex color B8865A changes by changing the brightness by 10 percent. The first figure shows a shift by +10% for each color and the second figure -10%.

Similar to the brightness gradients but the following saturation gradients show a change of the Hex color B8865A by changing the saturation by 10% instead.





B8865A



B8865A

FFFFFF



9C6D42



F2BB8D



80542B



FFD7A7



653D15



FFF3C3



4C2700



FFFFDF



321200



FFFFFC



1A0001



000000



B8865A



B8865A




B87C48



B8906C

 B87235

 B89A7F

 B86923

 B8A391

 B85F10

 B8ADA4

 B85600

 B8B7B6

 B8C1C8

 B8CBDB

 B8D4ED

 B8DEFF

# Harmonies

## Analogous

The Analogous color harmony consists of three colors that are next to each other on the color wheel.



C87D6F



B8865A



9E9054

# Triad

The Triadic color harmony groups three colors that are evenly spaced from another and form a triangle on the color wheel.



B8865A



2DA095



9B86C1

# Complementary

The Complementary color scheme is a pair of colors which are on the opposite of each other on the color wheel.



B8865A



5A8CB8

# Split Complementary

Split-complementary colors differ from the complementary color scheme. The scheme consists of three colors, the original color and two neighbors of the complement color.



6E91CC



B8865A



009FB2

# Square

The Square scheme is like the rectangle color scheme, but the four colors are evenly spaced on the color wheel.



B8865A



599E77



379AC6



BB7DA9

# Rectangle

The Rectangle color scheme consists of four colors that form a rectangle on the color wheel.



B8865A



899659



379AC6



8E8AC6



# Sweetspot

The Sweet Spot groups the original color and five complimentary colors.



B8865A



F0DDCC



B85A8C



786C62



F7F7F7



787878



# Same Dimension

The Same Dimension uses a secret algorithm to generate beautiful new colors.



B8865A



F0A25D



B8B55A



5C5753



9C4900



1C0D00



# Inverse Universe

The Inverse Universe completely reimagines the original color for something new.



5A8CB8



5DABF0



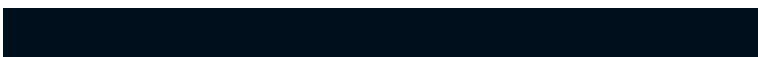
5A5DB8



53585C



00539C

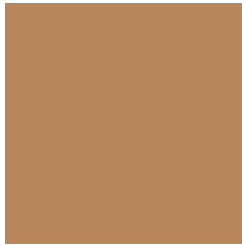


000F1C



# Previews

## White Background



This preview shows how the Hex color B8865A looks on a white background.

## Color Contrast Check

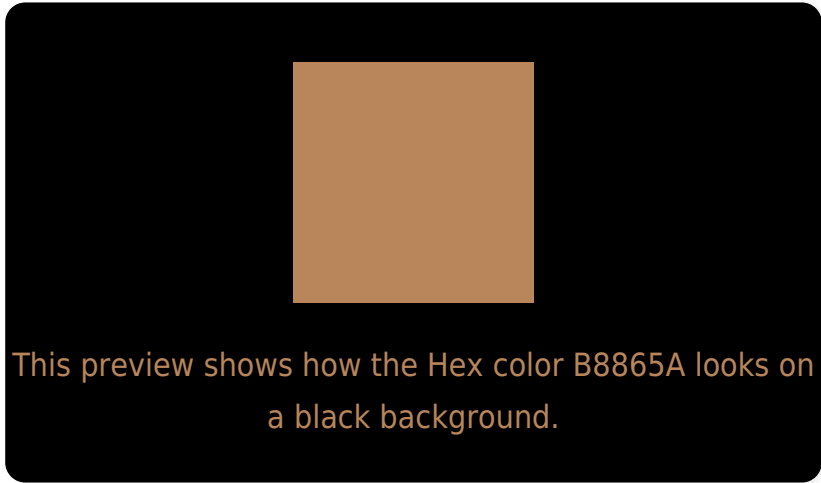
Large Text (above 18pt) WCAG AA ✓ Pass

Any Text WCAG AA × Fail

Large Text (above 18pt) WCAG AAA × Fail

Any Text WCAG AAA × Fail

# Black Background



## Color Contrast Check

Large Text (above 18pt) WCAG AA ✓ Pass

Any Text WCAG AA ✓ Pass

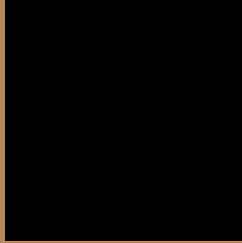
Large Text (above 18pt) WCAG AAA ✓ Pass

Any Text WCAG AAA × Fail

If you want to check with other color combinations, try the [Color Contrast Checker](#).



## Hex B8865A Background



This preview shows how black text looks on a background with the Hex color B8865A.



This preview shows how white text looks on a background with the Hex color B8865A.

# Color Blindness Simulation

Color vision deficiency is a very complex topic, and I could not describe the different causes any better than Wikipedia does, so if you want to learn more, you should check out their [article about color blindness](#).

## Dichromacy



**Original Color**  
B8865A

**Protanopia**  
9D915E

**Deuteranopia**  
AF8A59



**Tritanopia**  
BC808A

# Trichromacy



# Monochromacy



# CSS Examples

## Text

The CSS property to change the color of the text to Hex B8865A is called "color". The color property can be set on classes, ids or directly on the HTML element.

This example shows how text in the color #B8865A looks like.

```
.text, #text, p{  
    color:#B8865A  
}
```

If you want to add a text shadow in that color use the text-shadow property, you can generate a text shadow directly with our [CSS Text Shadow Generator](#).

Here you see how black text with a 4 pixel #B8865A colored shadow looks like.

```
.shadow{ text-shadow: 4px 4px 2px #B8865A
}
```

## Border

The CSS property to change the border of an element to Hex B8865A is called "border". The border property can be set on classes, ids or directly on the HTML element.

This example shows the color as border, it can be applied via the CSS property "border" or "border-color".

```
.border, #border, table{ border:4px solid
#B8865A }
```

If only the border color should be changed use the property `border-color`.

```
.border{ border-color:#B8865A }
```

If you want to add a box shadow in that color use:

Here you see how a box with a 4 pixel #B8865A colored shadow looks like.

```
.boxshadow{ -moz-box-shadow:4px 4px 4px  
4px #B8865A; -webkit-box-shadow:4px 4px  
4px 4px #B8865A; box-shadow:4px 4px 4px  
4px #B8865A }
```

# Background

The CSS property to change the background color of an element to Hex B8865A is called "background". The background property can be set on classes, ids or directly on the HTML element.

```
.background, #background, body{  
background:#B8865A }
```

If only the background color should be changed can be used:

```
.background{ background-color:#B8865A }
```

This example shows the color as background, it is applied via the CSS property "background".

To optimize and compress your CSS code, you can use our [online CSS compressor and optimizer](#) based on csstidy. If you want to create a linear or radial gradient as background or border, check our [CSS Gradient Generator](#).



Hey! You found this booklet interesting? Support Converting Colors with the new Membership Option!

The pro membership hides all ads, plus gives you double the colors in the color bucket, and more awesome pro features!

**[Learn more, Memberships starting at \\$2.50/m!](#)**

**Follow me  
on Twitter!**

@ConvertingColor