

# Converting Colors

Hex(B88989)

Have a look what the booklet for  
Hex(B88989) contains.

<b>Hex(B88989)</b> .....	3
<i><b>Conversions</b></i> .....	4
<i><b>Details</b></i> .....	6
<i><b>Harmonies</b></i> .....	11
<i><b>Previews</b></i> .....	23
<i><b>Color Blindness Simulation</b></i> .....	26
<i><b>CSS Examples</b></i> .....	29

# **Color**

**Hex(B88989)**

# Conversions

## Conversions Part 1

<b>Format</b>	<b>Color</b>
Hex	<a href="#">B88989</a>
RGB	<a href="#">184, 137, 137</a>
RGB Percent	<a href="#">72%, 54%, 54%</a>
CMY	<a href="#">0.2784, 0.4627, 0.4627</a>
CMYK	<a href="#">0.00, 0.26, 0.26, 0.28</a>
HSL	<a href="#">0°, 25%, 63%</a>
HSV	<a href="#">0°, 26%, 72%</a>
XYZ	<a href="#">33.2282, 29.8878, 27.6845</a>
YIQ	<a href="#">151.0530, 28.0120, 9.9640</a>

# Conversions

## Conversions Part 2

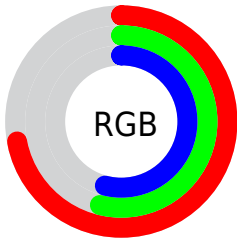
<b>Format</b>	<b>Color</b>
<b>RYB</b>	184, 137, 137
Decimal	12093833
CIELab	61.56, 17.93, 7.02
CIElCh	62, 19.255, 21.369
Yxy	29.8878, 0.3659, 0.3292
Android (android.graphics.Color)	4290283913 (0xFFB88989)
YUV	151.0530, -6.9281, 28.8945
Hunter-Lab	54.6697, 12.8200, 8.2446

# Details

The Hex color **B88989** is a light color, and the websafe version is hex **CC9999**. A complement of this color would be **89B8B8**, and the grayscale version is **979797**.

A 20% lighter version of the original color is **F1BFBE**, and **825757** is the 20% darker color. If you saturate the color by 10%, you get **B87777**, and if you desaturate by 10%, it is **B89B9B**.

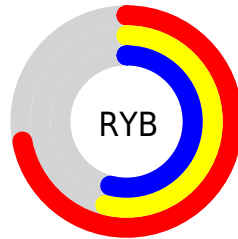
# Distribution



Red (72%)

Green (54%)

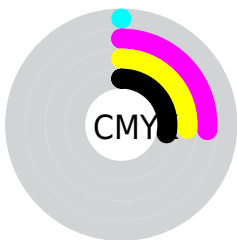
Blue (54%)



Red (72%)

Yellow (54%)

Blue (54%)

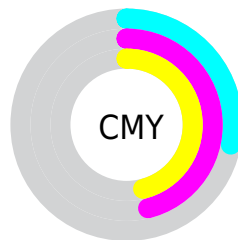


Cyan (0%)

Magenta (26%)

Yellow (26%)

Black (28%)



Cyan (28%)

Magenta (46%)

Yellow (46%)

# Brightness & Saturation Gradients

These gradients show how the Hex color B88989 changes by changing the brightness by 10 percent. The first figure shows a shift by +10% for each color and the second figure -10%.

Similar to the brightness gradients but the following saturation gradients show a change of the Hex color B88989 by changing the saturation by 10% instead.



 B88989

 B88989

FFFFFF

 9D6F70

 F1BFBE

 825757

 FFDBDA

 683F40

 FFF7F7

 4F292A

 371316

 230000


 000000

 B88989

 B88989

 B87777

 B89B9B

 B86464

 B8AEAE

 B85252

 B8C0C0

 B83F3F

 B8D3D3

 B82D2D

 B8E5E5

 B81B1B

 B8F7F7

 B80808

 B8FFFF

 B80000

# Harmonies

## Analogous

The Analogous color harmony consists of three colors that are next to each other on the color wheel.



B4899A



B88989



B38C7B

# Triad

The Triadic color harmony groups three colors that are evenly spaced from another and form a triangle on the color wheel.



B88989



819C7F



7A98B6

# Complementary

The Complementary color scheme is a pair of colors which are on the opposite of each other on the color wheel.



B88989



89B8B8

# Split Complementary

Split-complementary colors differ from the complementary color scheme. The scheme consists of three colors, the original color and two neighbors of the complement color.



699CAF



B88989



709E8F

# Square

The Square scheme is like the rectangle color scheme, but the four colors are evenly spaced on the color wheel.



B88989



959775



669EA0



9192B4

# Rectangle

The Rectangle color scheme consists of four colors that form a rectangle on the color wheel.



B88989



AB9075



669EA0



7499B4



# Sweetspot

The Sweet Spot groups the original color and five complimentary colors.



B88989



F0DDDD



B889B8



786C6C



F7F7F7



787878



# Same Dimension

The Same Dimension uses a secret algorithm to generate beautiful new colors.



B88989



F0A5A5



B8A189



5C5353



9C0000



1C0000



# Inverse Universe

The Inverse Universe completely reimagines the original color for something new.



89B8B8



A5F0F0



89A1B8



535C5C



009C9C

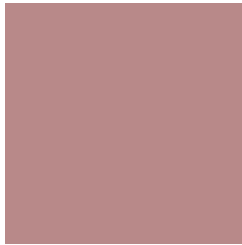


001C1C



# Previews

## White Background



This preview shows how the Hex color B88989 looks on a white background.

## Color Contrast Check

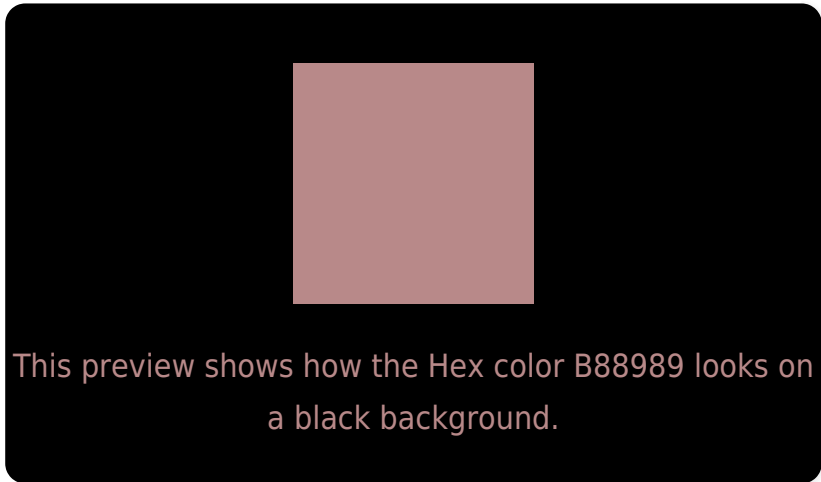
Large Text (above 18pt) WCAG AA ✓ Pass

Any Text WCAG AA × Fail

Large Text (above 18pt) WCAG AAA × Fail

Any Text WCAG AAA × Fail

# Black Background



## Color Contrast Check

Large Text (above 18pt) WCAG AA ✓ Pass

Any Text WCAG AA ✓ Pass

Large Text (above 18pt) WCAG AAA ✓ Pass

Any Text WCAG AAA × Fail

If you want to check with other color combinations, try the [Color Contrast Checker](#).



## Hex B88989 Background



This preview shows how black text looks on a background with the Hex color B88989.

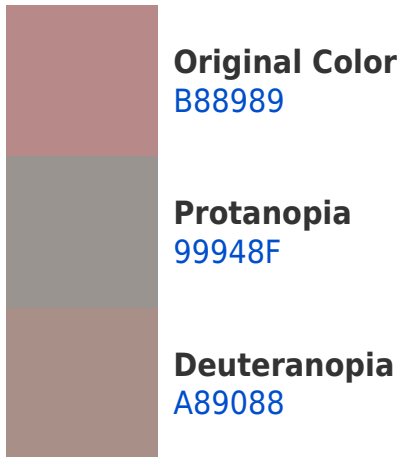


This preview shows how white text looks on a background with the Hex color B88989.

# Color Blindness Simulation

Color vision deficiency is a very complex topic, and I could not describe the different causes any better than Wikipedia does, so if you want to learn more, you should check out their [article about color blindness](#).

## Dichromacy





**Tritanopia**  
B98892

# Trichromacy



**Original Color**  
B88989

**Protanomaly**  
A4908D

**Deuteranomaly**  
AE8D88

**Tritanomaly**  
B9888F

# Monochromacy



**Original Color**  
B88989

**Achromatopsia**  
979797

**Achromatomaly**  
A39292

# CSS Examples

## Text

The CSS property to change the color of the text to Hex B88989 is called "color". The color property can be set on classes, ids or directly on the HTML element.

This example shows how text in the color #B88989 looks like.

```
.text, #text, p{  
    color:#B88989  
}
```

If you want to add a text shadow in that color use the text-shadow property, you can generate a text shadow directly with our [CSS Text Shadow Generator](#).

Here you see how black text with a 4 pixel #B88989 colored shadow looks like.

```
.shadow{ text-shadow: 4px 4px 2px #B88989
}
```

## Border

The CSS property to change the border of an element to Hex B88989 is called "border". The border property can be set on classes, ids or directly on the HTML element.

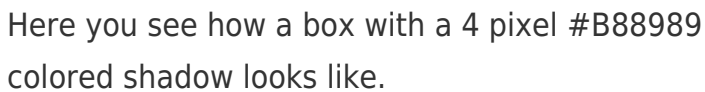
This example shows the color as border, it can be applied via the CSS property "border" or "border-color".

```
.border, #border, table{ border:4px solid
#B88989 }
```

If only the border color should be changed use the property `border-color`.

```
.border{ border-color:#B88989 }
```

If you want to add a box shadow in that color use:



Here you see how a box with a 4 pixel #B88989 colored shadow looks like.

```
.boxshadow{ -moz-box-shadow:4px 4px 4px  
4px #B88989; -webkit-box-shadow:4px 4px  
4px 4px #B88989; box-shadow:4px 4px 4px  
4px #B88989 }
```

# Background

The CSS property to change the background color of an element to Hex B88989 is called "background". The background property can be set on classes, ids or directly on the HTML element.

```
.background, #background, body{  
background:#B88989 }
```

If only the background color should be changed can be used:

```
.background{ background-color:#B88989 }
```

This example shows the color as background, it is applied via the CSS property "background".

To optimize and compress your CSS code, you can use our [online CSS compressor and optimizer](#) based on csstidy. If you want to create a linear or radial gradient as background or border, check our [CSS Gradient Generator](#).



Hey! You found this booklet interesting? Support Converting Colors with the new Membership Option!

The pro membership hides all ads, plus gives you double the colors in the color bucket, and more awesome pro features!

**[Learn more, Memberships starting at \\$2.50/m!](#)**

**Follow me  
on Twitter!**

@ConvertingColor