

# Converting Colors

Hex(B88A84)

Have a look what the booklet for  
Hex(B88A84) contains.

<b>Hex(B88A84)</b> .....	3
<i><b>Conversions</b></i> .....	4
<i><b>Details</b></i> .....	6
<i><b>Harmonies</b></i> .....	11
<i><b>Previews</b></i> .....	23
<i><b>Color Blindness Simulation</b></i> .....	26
<i><b>CSS Examples</b></i> .....	29

# **Color**

**Hex(B88A84)**

# Conversions

## Conversions Part 1

<b>Format</b>	<b>Color</b>
Hex	B88A84
RGB	184, 138, 132
RGB Percent	72%, 54%, 52%
CMY	0.2784, 0.4588, 0.4824
CMYK	0.00, 0.25, 0.28, 0.28
HSL	7°, 27%, 62%
HSV	7°, 28%, 72%
XYZ	33.0205, 30.0332, 25.8864
YIQ	151.0700, 29.3420, 7.8860

# Conversions

## Conversions Part 2

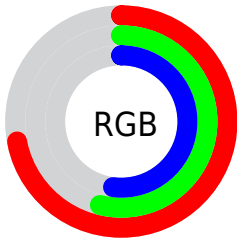
<b>Format</b>	<b>Color</b>
<b>RYB</b>	184, 139, 132
Decimal	12094084
CIELab	61.68, 16.65, 10.04
CIELCh	62, 19.445, 31.076
Yxy	30.0332, 0.3713, 0.3377
Android (android.graphics.Color)	4290284164 (0xFFB88A84)
YUV	151.0700, -9.4015, 28.8796
Hunter-Lab	54.8026, 11.6480, 10.3557

# Details

The Hex color **B88A84** is a light color, and the websafe version is hex **CC9999**. A complement of this color would be **84B2B8**, and the grayscale version is **979797**.

A 20% lighter version of the original color is **F1C0B9**, and **825853** is the 20% darker color. If you saturate the color by 10%, you get **B87A72**, and if you desaturate by 10%, it is **B89A96**.

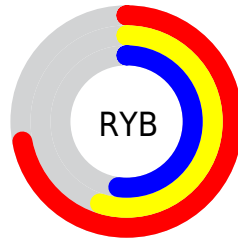
# Distribution



Red (72%)

Green (54%)

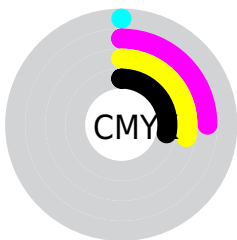
Blue (52%)



Red (72%)

Yellow (55%)

Blue (52%)

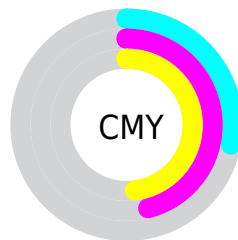


Cyan (0%)

Magenta (25%)

Yellow (28%)

Black (28%)



Cyan (28%)

Magenta (46%)

Yellow (48%)

# Brightness & Saturation Gradients

These gradients show how the Hex color B88A84 changes by changing the brightness by 10 percent. The first figure shows a shift by +10% for each color and the second figure -10%.

Similar to the brightness gradients but the following saturation gradients show a change of the Hex color B88A84 by changing the saturation by 10% instead.



 B88A84

 B88A84

FFFFFF

 9D706B

 F1C0B9

 825853

 FFDCD5

 68403C

 FFF8F1

 4F2A26

 361511

 220000

 000000

 B88A84

 B88A84

 B87A72

 B89A96

 B8695F

 B8ABA9

 B8594D

 B8BBBB

 B8493A

 B8CBCE

 B83928

 B8DBE0

 B82816

 B8ECF2

 B81803

 B8FCFF

 B81500

 B8FFFF

# Harmonies

## Analogous

The Analogous color harmony consists of three colors that are next to each other on the color wheel.



B78995



B88A84



B08E77

# Triad

The Triadic color harmony groups three colors that are evenly spaced from another and form a triangle on the color wheel.



B88A84



7B9D84



8296B7

# Complementary

The Complementary color scheme is a pair of colors which are on the opposite of each other on the color wheel.



B88A84



84B2B8

# Split Complementary

Split-complementary colors differ from the complementary color scheme. The scheme consists of three colors, the original color and two neighbors of the complement color.



6D9BB3



B88A84



6B9F95

# Square

The Square scheme is like the rectangle color scheme, but the four colors are evenly spaced on the color wheel.



B88A84



8F9977



659EA6



9990B2

# Rectangle

The Rectangle color scheme consists of four colors that form a rectangle on the color wheel.



B88A84



A79273



659EA6



7A98B7



# Sweetspot

The Sweet Spot groups the original color and five complimentary colors.



B88A84



F0DFDD



B884B3



786D6C



F7F7F7



787878



# Same Dimension

The Same Dimension uses a secret algorithm to generate beautiful new colors.



B88A84



F0A89E



B8A384



5C5453



9C1200



1C0300



# Inverse Universe

The Inverse Universe completely reimagines the original color for something new.



84B2B8



9EE6F0



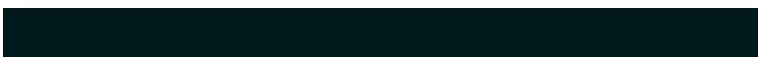
8499B8



535B5C



008A9C

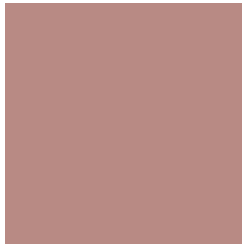


00191C



# Previews

## White Background



This preview shows how the Hex color B88A84 looks on a white background.

## Color Contrast Check

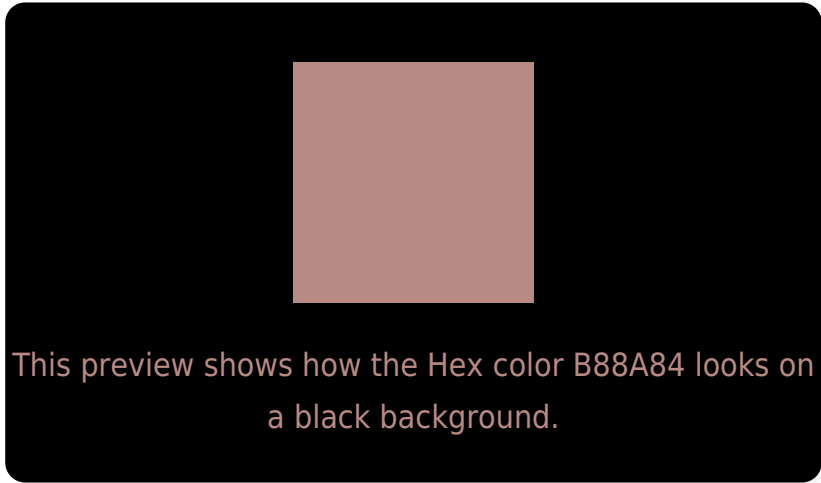
Large Text (above 18pt) WCAG AA ✓ Pass

Any Text WCAG AA × Fail

Large Text (above 18pt) WCAG AAA × Fail

Any Text WCAG AAA × Fail

# Black Background



## Color Contrast Check

Large Text (above 18pt) WCAG AA ✓ Pass

Any Text WCAG AA ✓ Pass

Large Text (above 18pt) WCAG AAA ✓ Pass

Any Text WCAG AAA ✓ Pass

If you want to check with other color combinations, try the [Color Contrast Checker](#).



## Hex B88A84 Background



This preview shows how black text looks on a background with the Hex color B88A84.



This preview shows how white text looks on a background with the Hex color B88A84.

# Color Blindness Simulation

Color vision deficiency is a very complex topic, and I could not describe the different causes any better than Wikipedia does, so if you want to learn more, you should check out their [article about color blindness](#).

## Dichromacy



**Original Color**  
B88A84

**Protanopia**  
9B958A

**Deuteranopia**  
AA9083



**Tritanopia**  
BA8892

# Trichromacy



**Original Color**  
B88A84

**Protanomaly**  
A69188

**Deuteranomaly**  
AF8E83

**Tritanomaly**  
B9898D

# Monochromacy



**Original Color**  
B88A84

**Achromatopsia**  
979797

**Achromatomaly**  
A39290

# CSS Examples

## Text

The CSS property to change the color of the text to Hex B88A84 is called "color". The color property can be set on classes, ids or directly on the HTML element.

This example shows how text in the color #B88A84 looks like.

```
.text, #text, p{  
    color:#B88A84  
}
```

If you want to add a text shadow in that color use the text-shadow property, you can generate a text shadow directly with our [CSS Text Shadow Generator](#).

Here you see how black text with a 4 pixel #B88A84 colored shadow looks like.

```
.shadow{ text-shadow: 4px 4px 2px #B88A84
}
```

## Border

The CSS property to change the border of an element to Hex B88A84 is called "border". The border property can be set on classes, ids or directly on the HTML element.

This example shows the color as border, it can be applied via the CSS property "border" or "border-color".

```
.border, #border, table{ border:4px solid
#B88A84 }
```

If only the border color should be changed use the property `border-color`.

```
.border{ border-color:#B88A84 }
```

If you want to add a box shadow in that color use:

Here you see how a box with a 4 pixel #B88A84 colored shadow looks like.

```
.boxshadow{ -moz-box-shadow:4px 4px 4px  
4px #B88A84; -webkit-box-shadow:4px 4px  
4px 4px #B88A84; box-shadow:4px 4px 4px  
4px #B88A84 }
```

# Background

The CSS property to change the background color of an element to Hex B88A84 is called "background". The background property can be set on classes, ids or directly on the HTML element.

```
.background, #background, body{  
background:#B88A84 }
```

If only the background color should be changed can be used:

```
.background{ background-color:#B88A84 }
```

This example shows the color as background, it is applied via the CSS property "background".

To optimize and compress your CSS code, you can use our [online CSS compressor and optimizer](#) based on csstidy. If you want to create a linear or radial gradient as background or border, check our [CSS Gradient Generator](#).



Hey! You found this booklet interesting? Support Converting Colors with the new Membership Option!

The pro membership hides all ads, plus gives you double the colors in the color bucket, and more awesome pro features!

**[Learn more, Memberships starting at \\$2.50/m!](#)**

**Follow me  
on Twitter!**

@ConvertingColor