

# Converting Colors

Hex(B8906C)

Have a look what the booklet for  
Hex(B8906C) contains.

<b>Hex(B8906C)</b> .....	3
<b><i>Conversions</i></b> .....	4
<b><i>Details</i></b> .....	6
<b><i>Harmonies</i></b> .....	11
<b><i>Previews</i></b> .....	23
<b><i>Color Blindness Simulation</i></b> .....	26
<b><i>CSS Examples</i></b> .....	29

**Color**

**Hex(B8906C)**

# Conversions

## Conversions Part 1

Format	Color
Hex	B8906C
RGB	184, 144, 108
RGB Percent	72%, 56%, 42%
CMY	0.2784, 0.4353, 0.5765
CMYK	0.00, 0.22, 0.41, 0.28
HSL	28°, 35%, 57%
HSV	28°, 41%, 72%
XYZ	32.4472, 31.2196, 18.5032
YIQ	151.8560, 35.3960, -2.7160

# Conversions

## Conversions Part 2

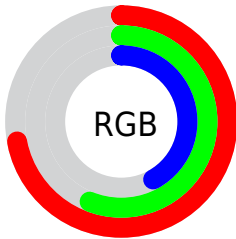
Format	Color
<a href="#">RYB</a>	<a href="#">184, 176, 108</a>
Decimal	<a href="#">12095596</a>
CIELab	<a href="#">62.69, 10.26, 24.90</a>
CIElCh	<a href="#">63, 26.927, 67.611</a>
Yxy	<a href="#">31.2196, 0.3949, 0.3799</a>
Android (android.graphics.Color)	<a href="#">4290285676 (0xFFB8906C)</a>
YUV	<a href="#">151.8560, -21.6210, 28.1903</a>
Hunter-Lab	<a href="#">55.8745, 5.8774, 19.4779</a>

# Details

The Hex color **B8906C** is a dark color, and the websafe version is hex **CC9966**. A complement of this color would be **6C94B8**, and the grayscale version is **989898**.

A 20% lighter version of the original color is **F1C6A0**, and **815E3C** is the 20% darker color. If you saturate the color by 10%, you get **B8865A**, and if you desaturate by 10%, it is **B89A7E**.

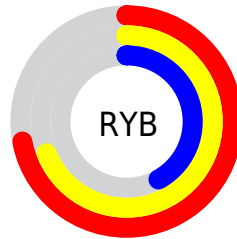
# Distribution



Red (72%)

Green (56%)

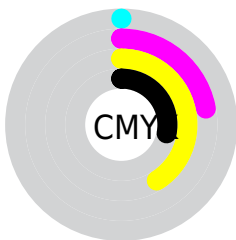
Blue (42%)



Red (72%)

Yellow (69%)

Blue (42%)

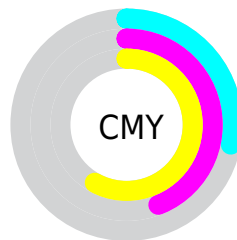


Cyan (0%)

Magenta (22%)

Yellow (41%)

Black (28%)



Cyan (28%)

Magenta (44%)

Yellow (58%)

# Brightness & Saturation Gradients

These gradients show how the Hex color B8906C changes by changing the brightness by 10 percent. The first figure shows a shift by +10% for each color and the second figure -10%.

Similar to the brightness gradients but the following saturation gradients show a change of the Hex color B8906C by changing the saturation by 10% instead.




 B8906C

 B8906C

FFFFFF

 9C7653

 F1C6A0

 815E3C

 FFE2BB

 674626

 FFFED7

 4D3010

 FFFFF3

 351B00

 1E0100

 000000

 B8906C

 B8906C

 B8865A

 B89A7E

 B87D47

 B8A391

 B87335

 B8ADA3

 B86922

 B8B7B6

 B86010

 B8C0C8

 B85700

 B8CADA

 B8D4ED

 B8DDFF

 B8E7FF

# Harmonies

## Analogous

The Analogous color harmony consists of three colors that are next to each other on the color wheel.



C5897C



B8906C



A39868

# Triad

The Triadic color harmony groups three colors that are evenly spaced from another and form a triangle on the color wheel.



B8906C



54A59D



A38FBE

# Complementary

The Complementary color scheme is a pair of colors which are on the opposite of each other on the color wheel.



B8906C



6C94B8

# Split Complementary

Split-complementary colors differ from the complementary color scheme. The scheme consists of three colors, the original color and two neighbors of the complement color.



8298C7



B8906C



4CA4B4

# Square

The Square scheme is like the rectangle color scheme, but the four colors are evenly spaced on the color wheel.



B8906C



6CA385



609FC3



BB88AA

# Rectangle

The Rectangle color scheme consists of four colors that form a rectangle on the color wheel.



B8906C



919D6D



609FC3



9892C2



# Sweetspot

The Sweet Spot groups the original color and five complimentary colors.



B8906C



F0E1D3



B86C95



786F67



F7F7F7



787878



# Same Dimension

The Same Dimension uses a secret algorithm to generate beautiful new colors.



B8906C



F0B178



B8B56C



5C5753



9C4A00



1C0D00



# Inverse Universe

The Inverse Universe completely reimagines the original color for something new.



6C94B8



78B7F0



6C6FB8



53575C



00529C

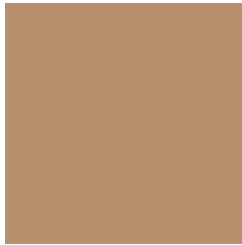


000F1C



# Previews

## White Background



This preview shows how the Hex color B8906C looks on a white background.

## Color Contrast Check

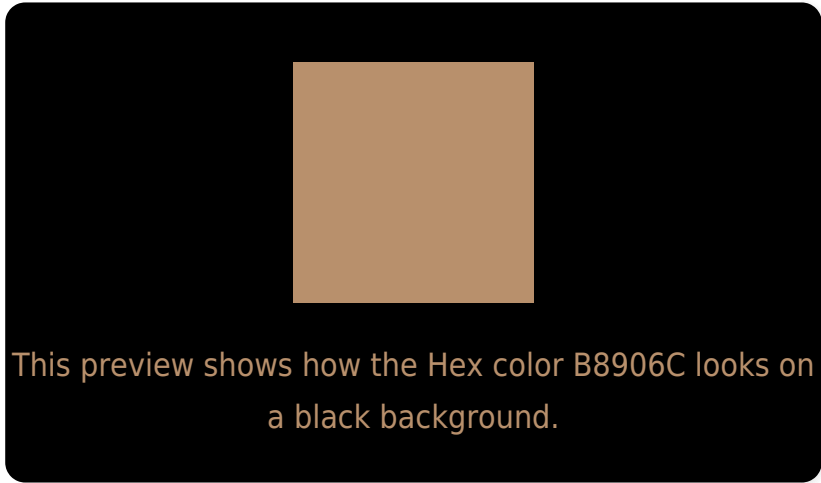
Large Text (above 18pt) WCAG AA × Fail

Any Text WCAG AA × Fail

Large Text (above 18pt) WCAG AAA × Fail

Any Text WCAG AAA × Fail

# Black Background



## Color Contrast Check

Large Text (above 18pt) WCAG AA ✓ Pass

Any Text WCAG AA ✓ Pass

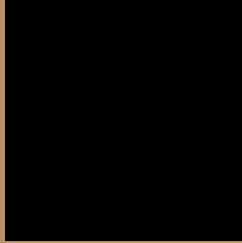
Large Text (above 18pt) WCAG AAA ✓ Pass

Any Text WCAG AAA ✓ Pass

If you want to check with other color combinations, try the [Color Contrast Checker](#).



## Hex B8906C Background



This preview shows how black text looks on a background with the Hex color B8906C.



This preview shows how white text looks on a background with the Hex color B8906C.

# Color Blindness Simulation

Color vision deficiency is a very complex topic, and I could not describe the different causes any better than Wikipedia does, so if you want to learn more, you should check out their [article about color blindness](#).

## Dichromacy



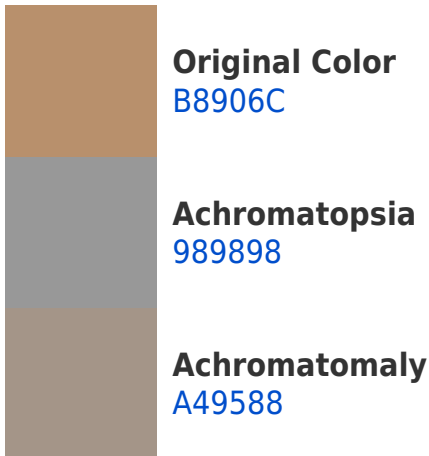


**Tritanopia**  
BC8B95

# Trichromacy



# Monochromacy



# CSS Examples

## Text

The CSS property to change the color of the text to Hex B8906C is called "color". The color property can be set on classes, ids or directly on the HTML element.

This example shows how text in the color #B8906C looks like.

```
.text, #text, p{  
    color:#B8906C  
}
```

If you want to add a text shadow in that color use the text-shadow property, you can generate a text shadow directly with our [CSS Text Shadow Generator](#).

Here you see how black text with a 4 pixel #B8906C colored shadow looks like.

```
.shadow{ text-shadow: 4px 4px 2px #B8906C
}
```

## Border

The CSS property to change the border of an element to Hex B8906C is called "border". The border property can be set on classes, ids or directly on the HTML element.

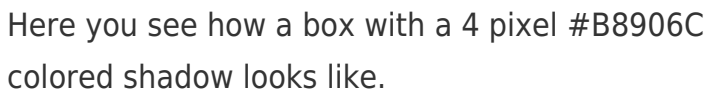
This example shows the color as border, it can be applied via the CSS property "border" or "border-color".

```
.border, #border, table{ border:4px solid
#B8906C }
```

If only the border color should be changed use the property `border-color`.

```
.border{ border-color:#B8906C }
```

If you want to add a box shadow in that color use:



Here you see how a box with a 4 pixel #B8906C colored shadow looks like.

```
.boxshadow{ -moz-box-shadow:4px 4px 4px  
4px #B8906C; -webkit-box-shadow:4px 4px  
4px 4px #B8906C; box-shadow:4px 4px 4px  
4px #B8906C }
```

# Background

The CSS property to change the background color of an element to Hex B8906C is called "background". The background property can be set on classes, ids or directly on the HTML element.

```
.background, #background, body{  
background:#B8906C }
```

If only the background color should be changed can be used:

```
.background{ background-color:#B8906C }
```

This example shows the color as background, it is applied via the CSS property "background".

To optimize and compress your CSS code, you can use our [online CSS compressor and optimizer](#) based on csstidy. If you want to create a linear or radial gradient as background or border, check our [CSS Gradient Generator](#).



Hey! You found this booklet interesting? Support Converting Colors with the new Membership Option!

The pro membership hides all ads, plus gives you double the colors in the color bucket, and more awesome pro features!

**[Learn more, Memberships starting at \\$2.50/m!](#)**

**Follow me  
on Twitter!**

@ConvertingColor