

Converting Colors

Hex(B89490)

Have a look what the booklet for
Hex(B89490) contains.

Hex(B89490)	3
<i>Conversions</i>	4
<i>Details</i>	6
<i>Harmonies</i>	11
<i>Previews</i>	23
<i>Color Blindness Simulation</i>	26
<i>CSS Examples</i>	29

Color

Hex(B89490)

Conversions

Conversions Part 1

Format	Color
Hex	B89490
RGB	184, 148, 144
RGB Percent	72%, 58%, 56%
CMY	0.2784, 0.4196, 0.4353
CMYK	0.00, 0.20, 0.22, 0.28
HSL	6°, 22%, 64%
HSV	6°, 22%, 72%
XYZ	35.3911, 33.3838, 30.9640
YIQ	158.3080, 22.7400, 6.3880

Conversions

Conversions Part 2

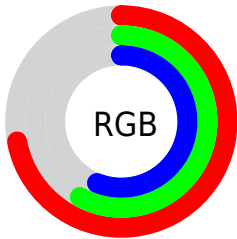
Format	Color
RYB	184, 148, 144
Decimal	12096656
CIELab	64.47, 12.86, 7.22
CIELCh	64, 14.746, 29.321
Yxy	33.3838, 0.3548, 0.3347
Android (android.graphics.Color)	4290286736 (0xFFB89490)
YUV	158.3080, -7.0538, 22.5319
Hunter-Lab	57.7787, 8.2237, 8.6712

Details

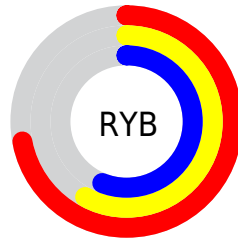
The Hex color **B89490** is a light color, and the websafe version is hex **CC9999**. A complement of this color would be **90B4B8**, and the grayscale version is **9E9E9E**.

A 20% lighter version of the original color is **F1CAC6**, and **82615E** is the 20% darker color. If you saturate the color by 10%, you get **B8837E**, and if you desaturate by 10%, it is **B8A5A2**.

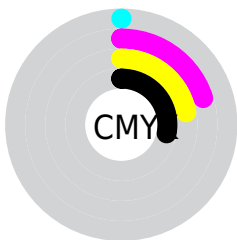
Distribution



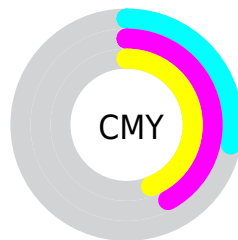
- Red (72%)
- Green (58%)
- Blue (56%)



- Red (72%)
- Yellow (58%)
- Blue (56%)



- Cyan (0%)
- Magenta (20%)
- Yellow (22%)
- Black (28%)



- Cyan (28%)
- Magenta (42%)
- Yellow (44%)

Brightness & Saturation Gradients

These gradients show how the Hex color B89490 changes by changing the brightness by 10 percent. The first figure shows a shift by +10% for each color and the second figure -10%.

Similar to the brightness gradients but the following saturation gradients show a change of the Hex color B89490 by changing the saturation by 10% instead.

 B89490

 B89490

FFFFFF

 9D7A76

 F1CAC6

 82615E

 FFE6E2

 694946

FFFFFFE

 503330

 381D1B

 240600

 000000

 B89490

 B89490

 B8837E

 B8A5A2

 B8736B

 B8B5B5

 B86259

 B8C6C7

 B85246

 B8D6DA

 B84134

 B8E7EC

 B83122

 B8F7FE

 B8200F

 B8FFFF

 B81200

Harmonies

Analogous

The Analogous color harmony consists of three colors that are next to each other on the color wheel.



B6939D



B89490



B29786

Triad

The Triadic color harmony groups three colors that are evenly spaced from another and form a triangle on the color wheel.



B89490



8AA38F



8D9EB6

Complementary

The Complementary color scheme is a pair of colors which are on the opposite of each other on the color wheel.



B89490



90B4B8

Split Complementary

Split-complementary colors differ from the complementary color scheme. The scheme consists of three colors, the original color and two neighbors of the complement color.



7FA1B2



B89490



7EA49C

Square

The Square scheme is like the rectangle color scheme, but the four colors are evenly spaced on the color wheel.



B89490



999F85



7AA4A9



9E99B3

Rectangle

The Rectangle color scheme consists of four colors that form a rectangle on the color wheel.



B89490



AB9A83



7AA4A9



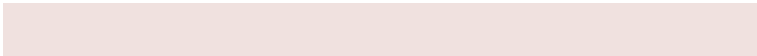
889FB6

Sweetspot

The Sweet Spot groups the original color and five complimentary colors.



B89490



F0E1DF



B890B4



786F6E



F7F7F7



787878

Same Dimension

The Same Dimension uses a secret algorithm to generate beautiful new colors.



B89490



F0B8B1



B8A890



5C5453



9C1000



1C0300

Inverse Universe

The Inverse Universe completely reimagines the original color for something new.



90B4B8



B1E9F0



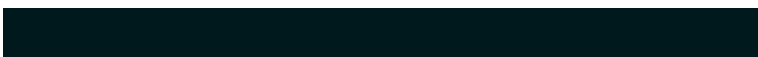
90A0B8



535B5C



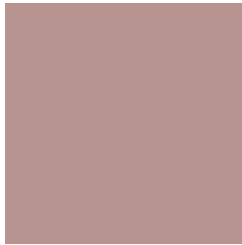
008C9C



00191C

Previews

White Background



This preview shows how the Hex color B89490 looks on a white background.

Color Contrast Check

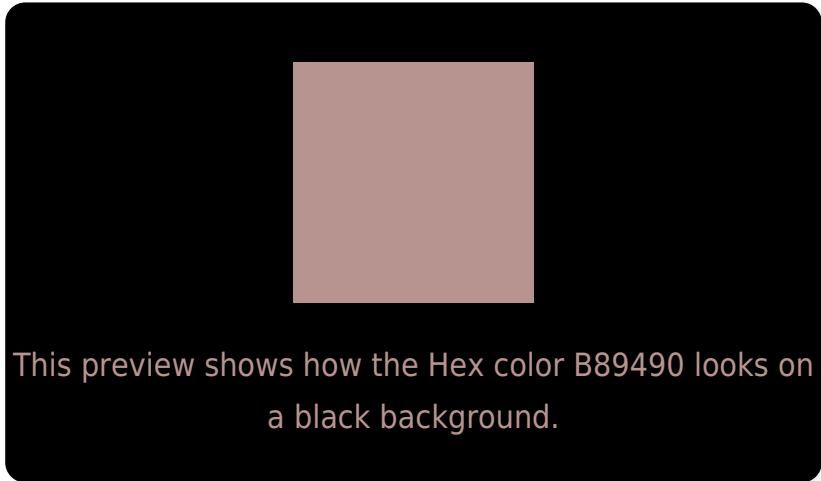
Large Text (above 18pt) WCAG AA × Fail

Any Text WCAG AA × Fail

Large Text (above 18pt) WCAG AAA × Fail

Any Text WCAG AAA × Fail

Black Background



Color Contrast Check

Large Text (above 18pt) WCAG AA ✓ Pass

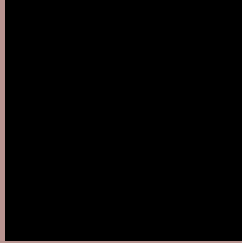
Any Text WCAG AA ✓ Pass

Large Text (above 18pt) WCAG AAA ✓ Pass

Any Text WCAG AAA ✓ Pass

If you want to check with other color combinations, try the [Color Contrast Checker](#).

Hex B89490 Background



This preview shows how black text looks on a background with the Hex color B89490.



This preview shows how white text looks on a background with the Hex color B89490.

Color Blindness Simulation

Color vision deficiency is a very complex topic, and I could not describe the different causes any better than Wikipedia does, so if you want to learn more, you should check out their [article about color blindness](#).


Dichromacy



Original Color
B89490

Protanopia
A19C94

Deuteranopia
B0978F



Tritanopia
BA929D

Trichromacy



Original Color

B89490

Protanomaly

A99993

Deuteranomaly

B3968F

Tritanomaly

B99398

Monochromacy



Original Color

B89490

Achromatopsia

9E9E9E

Achromatomaly

A79A99

CSS Examples

Text

The CSS property to change the color of the text to Hex B89490 is called "color". The color property can be set on classes, ids or directly on the HTML element.

This example shows how text in the color #B89490 looks like.

```
.text, #text, p{  
    color:#B89490  
}
```

If you want to add a text shadow in that color use the text-shadow property, you can generate a text shadow directly with our [CSS Text Shadow Generator](#).

Here you see how black text with a 4 pixel #B89490 colored shadow looks like.

```
.shadow{ text-shadow: 4px 4px 2px #B89490
}
```

Border

The CSS property to change the border of an element to Hex B89490 is called "border". The border property can be set on classes, ids or directly on the HTML element.

This example shows the color as border, it can be applied via the CSS property "border" or "border-color".

```
.border, #border, table{ border:4px solid
#B89490 }
```

If only the border color should be changed use the property border-color.

```
.border{ border-color:#B89490 }
```

If you want to add a box shadow in that color use:

Here you see how a box with a 4 pixel #B89490 colored shadow looks like.

```
.boxshadow{ -moz-box-shadow:4px 4px 4px  
4px #B89490; -webkit-box-shadow:4px 4px  
4px 4px #B89490; box-shadow:4px 4px 4px  
4px #B89490 }
```

Background

The CSS property to change the background color of an element to Hex B89490 is called "background". The background property can be set on classes, ids or directly on the HTML element.

```
.background, #background, body{  
background:#B89490 }
```

If only the background color should be changed can be used:

```
.background{ background-color:#B89490 }
```

This example shows the color as background, it is applied via the CSS property "background".

To optimize and compress your CSS code, you can use our [online CSS compressor and optimizer](#) based on csstidy. If you want to create a linear or radial gradient as background or border, check our [CSS Gradient Generator](#).

Hey! You found this booklet interesting? Support Converting Colors with the new Membership Option!

The pro membership hides all ads, plus gives you double the colors in the color bucket, and more awesome pro features!

[Learn more, Memberships starting at \\$2.50/m!](#)

**Follow me
on Twitter!**

@ConvertingColor