

# Converting Colors

Hex(B89596)

Have a look what the booklet for  
Hex(B89596) contains.

<b>Hex(B89596)</b> .....	3
<i><b>Conversions</b></i> .....	4
<i><b>Details</b></i> .....	6
<i><b>Harmonies</b></i> .....	11
<i><b>Previews</b></i> .....	23
<i><b>Color Blindness Simulation</b></i> .....	26
<i><b>CSS Examples</b></i> .....	29

# **Color**

**Hex(B89596)**

# Conversions

## Conversions Part 1

<b>Format</b>	<b>Color</b>
Hex	<a href="#">B89596</a>
RGB	<a href="#">184, 149, 150</a>
RGB Percent	<a href="#">72%, 58%, 59%</a>
CMY	<a href="#">0.2784, 0.4157, 0.4118</a>
CMYK	<a href="#">0.00, 0.19, 0.18, 0.28</a>
HSL	<a href="#">358°, 20%, 65%</a>
HSV	<a href="#">358°, 19%, 72%</a>
XYZ	<a href="#">36.0196, 33.8872, 33.4966</a>
YIQ	<a href="#">159.5790, 20.5390, 7.7310</a>

# Conversions

## Conversions Part 2

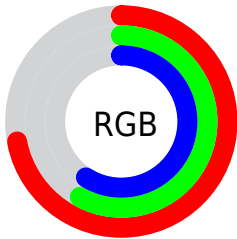
Format	Color
<a href="#">RYB</a>	<a href="#">184, 149, 150</a>
Decimal	<a href="#">12096918</a>
CIELab	<a href="#">64.87, 13.24, 4.42</a>
CIELCh	<a href="#">65, 13.958, 18.473</a>
Yxy	<a href="#">33.8872, 0.3483, 0.3277</a>
Android (android.graphics.Color)	<a href="#">4290286998</a> ( <a href="#">0xFFB89596</a> )
YUV	<a href="#">159.5790, -4.7224, 21.4172</a>
Hunter-Lab	<a href="#">58.2128, 8.5761, 6.6324</a>

# Details

The Hex color **B89596** is a light color, and the websafe version is hex **CC9999**. A complement of this color would be **95B8B7**, and the grayscale version is **A0A0A0**.

A 20% lighter version of the original color is **F0CBCC**, and **826263** is the 20% darker color. If you saturate the color by 10%, you get **B88384**, and if you desaturate by 10%, it is **B8A7A8**.

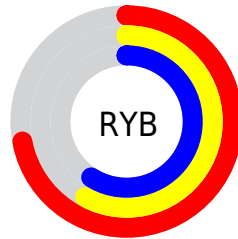
# Distribution



Red (72%)

Green (58%)

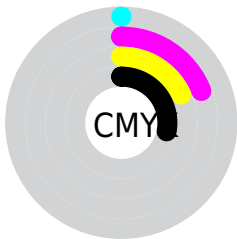
Blue (59%)



Red (72%)

Yellow (58%)

Blue (59%)

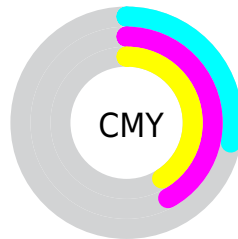


Cyan (0%)

Magenta (19%)

Yellow (18%)

Black (28%)



Cyan (28%)

Magenta (42%)

Yellow (41%)

# Brightness & Saturation Gradients

These gradients show how the Hex color B89596 changes by changing the brightness by 10 percent. The first figure shows a shift by +10% for each color and the second figure -10%.

Similar to the brightness gradients but the following saturation gradients show a change of the Hex color B89596 by changing the saturation by 10% instead.



 B89596

 B89596

FFFFFF

 9D7B7C

 F0CBCC

 826263

 FFE7E8

 694A4B

 503335

 391E20

 240708

 000000

 B89596

 B89596

 B88384

 B8A7A8

 B87072

 B8BABA

 B85E60

 B8CCCC

 B84B4F

 B8DFDD

 B8393D

 B8F1EF

 B8272B

 B8FFFF

 B81419

 B80207

 B80005

# Harmonies

## Analogous

The Analogous color harmony consists of three colors that are next to each other on the color wheel.



B495A3



B89596



B5978B

# Triad

The Triadic color harmony groups three colors that are evenly spaced from another and form a triangle on the color wheel.



B89596



91A28D



8AA0B5

# Complementary

The Complementary color scheme is a pair of colors which are on the opposite of each other on the color wheel.



B89596



95B8B7

# Split Complementary

Split-complementary colors differ from the complementary color scheme. The scheme consists of three colors, the original color and two neighbors of the complement color.



7FA3B0



B89596



84A498

# Square

The Square scheme is like the rectangle color scheme, but the four colors are evenly spaced on the color wheel.



B89596



9F9F86



7DA5A5



9A9CB5

# Rectangle

The Rectangle color scheme consists of four colors that form a rectangle on the color wheel.



B89596



B09A87



7DA5A5



86A1B4



# Sweetspot

The Sweet Spot groups the original color and five complimentary colors.



B89596



F0E1E2



B795B8



786F70



F7F7F7



787878



# Same Dimension

The Same Dimension uses a secret algorithm to generate beautiful new colors.



B89596



F0B9BA



B8A595



5C5353



9C0004



1C0001



# Inverse Universe

The Inverse Universe completely reimagines the original color for something new.



B89596



F0B9BA



95A8B8



5C5353



9C0004

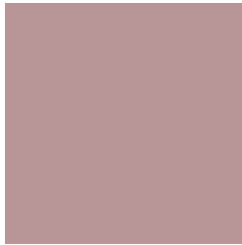


1C0001



# Previews

## White Background



This preview shows how the Hex color B89596 looks on a white background.

## Color Contrast Check

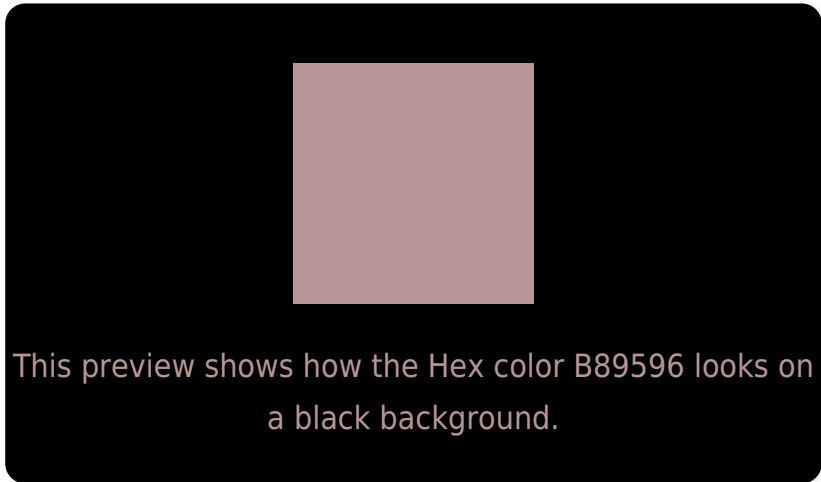
Large Text (above 18pt) WCAG AA × Fail

Any Text WCAG AA × Fail

Large Text (above 18pt) WCAG AAA × Fail

Any Text WCAG AAA × Fail

# Black Background



## Color Contrast Check

Large Text (above 18pt) WCAG AA ✓ Pass

Any Text WCAG AA ✓ Pass

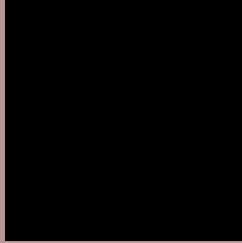
Large Text (above 18pt) WCAG AAA ✓ Pass

Any Text WCAG AAA ✓ Pass

If you want to check with other color combinations, try the [Color Contrast Checker](#).



## Hex B89596 Background



This preview shows how black text looks on a background with the Hex color B89596.

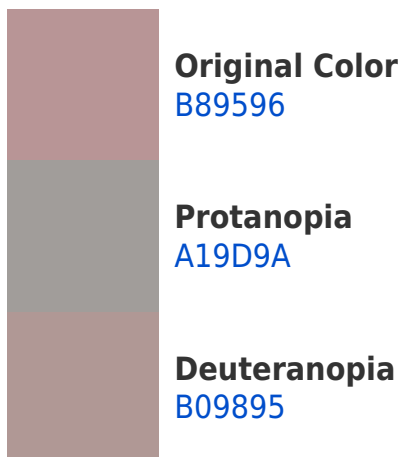


This preview shows how white text looks on a background with the Hex color B89596.

# Color Blindness Simulation

Color vision deficiency is a very complex topic, and I could not describe the different causes any better than Wikipedia does, so if you want to learn more, you should check out their [article about color blindness](#).

## Dichromacy





**Tritanopia**  
B9949F

# Trichromacy



**Original Color**  
B89596

**Protanomaly**  
A99A99

**Deuteranomaly**  
B39795

**Tritanomaly**  
B9949C

# Monochromacy



**Original Color**  
B89596

**Achromatopsia**  
A0A0A0

**Achromatomaly**  
A99C9C

# CSS Examples

## Text

The CSS property to change the color of the text to Hex B89596 is called "color". The color property can be set on classes, ids or directly on the HTML element.

This example shows how text in the color #B89596 looks like.

```
.text, #text, p{  
    color:#B89596  
}
```

If you want to add a text shadow in that color use the text-shadow property, you can generate a text shadow directly with our [CSS Text Shadow Generator](#).

Here you see how black text with a 4 pixel #B89596 colored shadow looks like.

```
.shadow{ text-shadow: 4px 4px 2px #B89596
}
```

## Border

The CSS property to change the border of an element to Hex B89596 is called "border". The border property can be set on classes, ids or directly on the HTML element.

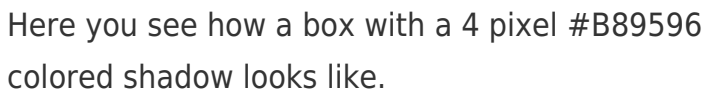
This example shows the color as border, it can be applied via the CSS property "border" or "border-color".

```
.border, #border, table{ border:4px solid
#B89596 }
```

If only the border color should be changed use the property `border-color`.

```
.border{ border-color:#B89596 }
```

If you want to add a box shadow in that color use:



Here you see how a box with a 4 pixel #B89596 colored shadow looks like.

```
.boxshadow{ -moz-box-shadow:4px 4px 4px  
4px #B89596; -webkit-box-shadow:4px 4px  
4px 4px #B89596; box-shadow:4px 4px 4px  
4px #B89596 }
```

# Background

The CSS property to change the background color of an element to Hex B89596 is called "background". The background property can be set on classes, ids or directly on the HTML element.

```
.background, #background, body{  
background:#B89596 }
```

If only the background color should be changed can be used:

```
.background{ background-color:#B89596 }
```

This example shows the color as background, it is applied via the CSS property "background".

To optimize and compress your CSS code, you can use our [online CSS compressor and optimizer](#) based on csstidy. If you want to create a linear or radial gradient as background or border, check our [CSS Gradient Generator](#).



Hey! You found this booklet interesting? Support Converting Colors with the new Membership Option!

The pro membership hides all ads, plus gives you double the colors in the color bucket, and more awesome pro features!

**[Learn more, Memberships starting at \\$2.50/m!](#)**

**Follow me  
on Twitter!**

@ConvertingColor