

Converting Colors

Hex(B8979E)

Have a look what the booklet for
Hex(B8979E) contains.

Hex(B8979E)	3
<i>Conversions</i>	4
<i>Details</i>	6
<i>Harmonies</i>	11
<i>Previews</i>	23
<i>Color Blindness Simulation</i>	26
<i>CSS Examples</i>	29

Color

Hex(B8979E)

Conversions

Conversions Part 1

Format	Color
Hex	B8979E
RGB	184, 151, 158
RGB Percent	72%, 59%, 62%
CMY	0.2784, 0.4078, 0.3804
CMYK	0.00, 0.18, 0.14, 0.28
HSL	347°, 19%, 66%
HSV	347°, 18%, 72%
XYZ	37.0053, 34.7922, 37.1129
YIQ	161.6650, 17.4210, 9.1730

Conversions

Conversions Part 2

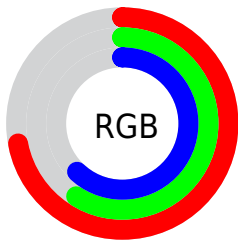
Format	Color
RYB	184, 151, 158
Decimal	12097438
CIELab	65.59, 13.43, 0.96
CIElCh	66, 13.468, 4.085
Yxy	34.7922, 0.3398, 0.3195
Android (android.graphics.Color)	4290287518 (0xFFB8979E)
YUV	161.6650, -1.8068, 19.5878
Hunter-Lab	58.9849, 8.7619, 3.9845

Details

The Hex color **B8979E** is a light color, and the websafe version is hex **CC9999**. A complement of this color would be **97B8B1**, and the grayscale version is **A2A2A2**.

A 20% lighter version of the original color is **F0CDD5**, and **83646B** is the 20% darker color. If you saturate the color by 10%, you get **B88590**, and if you desaturate by 10%, it is **B8A9AC**.

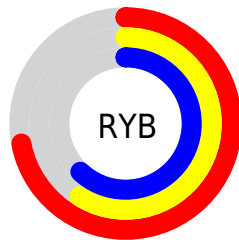
Distribution



Red (72%)

Green (59%)

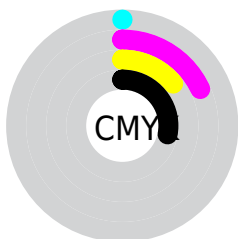
Blue (62%)



Red (72%)

Yellow (59%)

Blue (62%)

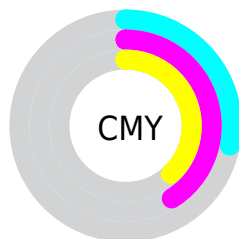


Cyan (0%)

Magenta (18%)

Yellow (14%)

Black (28%)



Cyan (28%)

Magenta (41%)

Yellow (38%)

Brightness & Saturation Gradients

These gradients show how the Hex color B8979E changes by changing the brightness by 10 percent. The first figure shows a shift by +10% for each color and the second figure -10%.

Similar to the brightness gradients but the following saturation gradients show a change of the Hex color B8979E by changing the saturation by 10% instead.

 B8979E

 B8979E

FFFFFF

 9D7D84

 F0CDD5

 83646B

 FFEAF1

 694C53

 51353C

 392026

 230A11

 000000

 B8979E

 B8979E

 B88590

 B8A9AC

 B87281

 B8BCBB

 B86073

 B8CEC9

 B84D64

 B8E1D8

 B83B56

 B8F3E6

 B82947

 B8FFF5

 B81639

 B8FFFF

 B8042A

 B80027

Harmonies

Analogous

The Analogous color harmony consists of three colors that are next to each other on the color wheel.



B198AA



B8979E



B89892

Triad

The Triadic color harmony groups three colors that are evenly spaced from another and form a triangle on the color wheel.



B8979E



9AA38B



87A3B5

Complementary

The Complementary color scheme is a pair of colors which are on the opposite of each other on the color wheel.



B8979E



97B8B1

Split Complementary

Split-complementary colors differ from the complementary color scheme. The scheme consists of three colors, the original color and two neighbors of the complement color.



80A6AC



B8979E



8CA594

Square

The Square scheme is like the rectangle color scheme, but the four colors are evenly spaced on the color wheel.



B8979E



A79F87



83A6A1



94A0B7

Rectangle

The Rectangle color scheme consists of four colors that form a rectangle on the color wheel.



B8979E



B59A8C



83A6A1



84A4B2

Sweetspot

The Sweet Spot groups the original color and five complimentary colors.



B8979E



F0E4E6



B197B8



787172



F7F7F7



787878

Same Dimension

The Same Dimension uses a secret algorithm to generate beautiful new colors.



B8979E



F0BBC6



B8A097



5C5355



9C0021



1C0006

Inverse Universe

The Inverse Universe completely reimagines the original color for something new.



B8979E



F0BBC6



97AFB8



5C5355



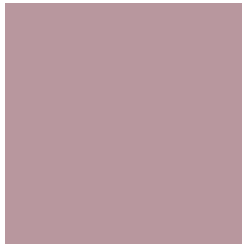
9C0021



1C0006

Previews

White Background



This preview shows how the Hex color B8979E looks on a white background.

Color Contrast Check

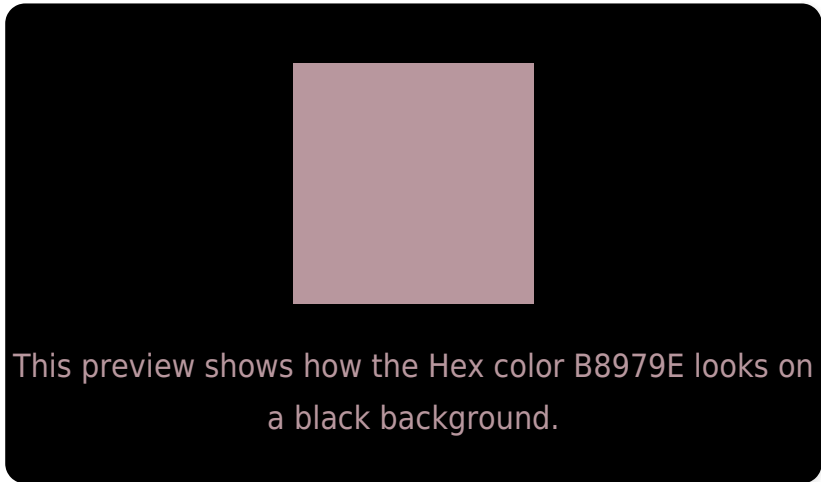
Large Text (above 18pt) WCAG AA × Fail

Any Text WCAG AA × Fail

Large Text (above 18pt) WCAG AAA × Fail

Any Text WCAG AAA × Fail

Black Background



Color Contrast Check

Large Text (above 18pt) WCAG AA ✓ Pass

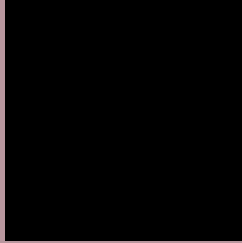
Any Text WCAG AA ✓ Pass

Large Text (above 18pt) WCAG AAA ✓ Pass

Any Text WCAG AAA ✓ Pass

If you want to check with other color combinations, try the [Color Contrast Checker](#).

Hex B8979E Background



This preview shows how black text looks on a background with the Hex color B8979E.

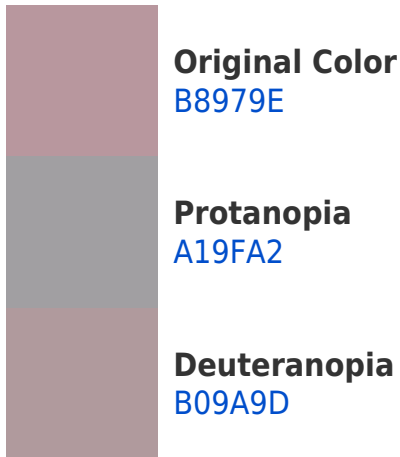


This preview shows how white text looks on a background with the Hex color B8979E.

Color Blindness Simulation

Color vision deficiency is a very complex topic, and I could not describe the different causes any better than Wikipedia does, so if you want to learn more, you should check out their [article about color blindness](#).

Dichromacy





Tritanopia
B996A2

Trichromacy



Original Color
B8979E

Protanomaly
A99CA1

Deuteranomaly
B3999D

Tritanomaly
B996A1

Monochromacy



Original Color
B8979E

Achromatopsia
A2A2A2

Achromatomaly
AA9EA1

CSS Examples

Text

The CSS property to change the color of the text to Hex B8979E is called "color". The color property can be set on classes, ids or directly on the HTML element.

This example shows how text in the color #B8979E looks like.

```
.text, #text, p{  
    color:#B8979E  
}
```

If you want to add a text shadow in that color use the text-shadow property, you can generate a text shadow directly with our [CSS Text Shadow Generator](#).

Here you see how black text with a 4 pixel #B8979E colored shadow looks like.

```
.shadow{ text-shadow: 4px 4px 2px #B8979E
}
```

Border

The CSS property to change the border of an element to Hex B8979E is called "border". The border property can be set on classes, ids or directly on the HTML element.

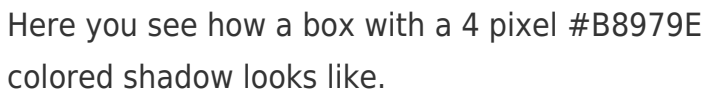
This example shows the color as border, it can be applied via the CSS property "border" or "border-color".

```
.border, #border, table{ border:4px solid
#B8979E }
```

If only the border color should be changed use the property `border-color`.

```
.border{ border-color:#B8979E }
```

If you want to add a box shadow in that color use:



Here you see how a box with a 4 pixel #B8979E colored shadow looks like.

```
.boxshadow{ -moz-box-shadow:4px 4px 4px  
4px #B8979E; -webkit-box-shadow:4px 4px  
4px 4px #B8979E; box-shadow:4px 4px 4px  
4px #B8979E }
```

Background

The CSS property to change the background color of an element to Hex B8979E is called "background". The background property can be set on classes, ids or directly on the HTML element.

```
.background, #background, body{  
background:#B8979E }
```

If only the background color should be changed can be used:

```
.background{ background-color:#B8979E }
```

This example shows the color as background, it is applied via the CSS property "background".

To optimize and compress your CSS code, you can use our [online CSS compressor and optimizer](#) based on csstidy. If you want to create a linear or radial gradient as background or border, check our [CSS Gradient Generator](#).

Hey! You found this booklet interesting? Support Converting Colors with the new Membership Option!

The pro membership hides all ads, plus gives you double the colors in the color bucket, and more awesome pro features!

[Learn more, Memberships starting at \\$2.50/m!](#)

**Follow me
on Twitter!**

@ConvertingColor