

Converting Colors

Hex(B89CA4)

Have a look what the booklet for
Hex(B89CA4) contains.

| | |
|------------------------------------------------|----|
| Hex(B89CA4) | 3 |
| <i>Conversions</i> | 4 |
| <i>Details</i> | 6 |
| <i>Harmonies</i> | 11 |
| <i>Previews</i> | 23 |
| <i>Color Blindness Simulation</i> | 26 |
| <i>CSS Examples</i> | 29 |

Color

Hex(B89CA4)

Conversions

Conversions Part 1

| Format | Color |
|-------------|---------------------------|
| Hex | B89CA4 |
| RGB | 184, 156, 164 |
| RGB Percent | 72%, 61%, 64% |
| CMY | 0.2784, 0.3882, 0.3569 |
| CMYK | 0.00, 0.15, 0.11, 0.28 |
| HSL | 343°, 16%, 67% |
| HSV | 343°, 15%, 72% |
| XYZ | 38.3565, 36.6476, 40.1741 |
| YIQ | 165.2840, 14.1200, 8.4240 |

Conversions

Conversions Part 2

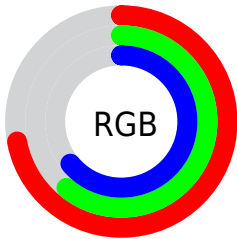
| Format | Color |
|-------------------------------------|--------------------------------------------------------------|
| RYB | 184, 156, 164 |
| Decimal | 12098724 |
| CIELab | 67.01, 11.68, -0.32 |
| CIELCh | 67, 11.686, 358.415 |
| Yxy | 36.6476, 0.3330, 0.3182 |
| Android (android.graphics.Color) | 4290288804 (0xFFB89CA4) |
| YUV | 165.2840, -0.6330, 16.4139 |
| Hunter-Lab | 60.5373, 7.1575, 3.0298 |

Details

The Hex color **B89CA4** is a light color, and the websafe version is hex **CC9999**. A complement of this color would be **9CB8B0**, and the grayscale version is **A5A5A5**.

A 20% lighter version of the original color is **F0D3DB**, and **836970** is the 20% darker color. If you saturate the color by 10%, you get **B88A97**, and if you desaturate by 10%, it is **B8AEB1**.

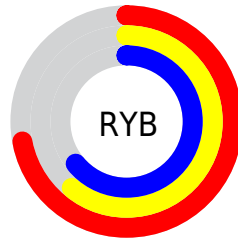
Distribution



Red (72%)

Green (61%)

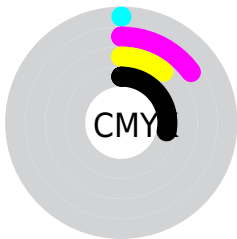
Blue (64%)



Red (72%)

Yellow (61%)

Blue (64%)

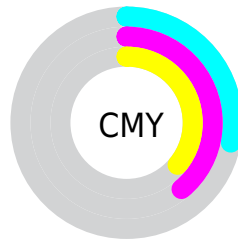


Cyan (0%)

Magenta (15%)

Yellow (11%)

Black (28%)



Cyan (28%)

Magenta (39%)

Yellow (36%)

Brightness & Saturation Gradients

These gradients show how the Hex color B89CA4 changes by changing the brightness by 10 percent. The first figure shows a shift by +10% for each color and the second figure -10%.

Similar to the brightness gradients but the following saturation gradients show a change of the Hex color B89CA4 by changing the saturation by 10% instead.

 B89CA4

 B89CA4

FFFFFF

 9D828A

 F0D3DB

 836970

 FFEFF7

 695158

 513941

 3A242B

 240F16

 000000

 B89CA4

 B89CA4

 B88A97

 B8AEB1

 B8778A

 B8C1BE

 B8657D

 B8D3CB

 B8526F

 B8E6D9

 B84062

 B8F8E6

 B82E55

 B8FFF3

 B81B48

 B8FFFF

 B8093B

 B80035

Harmonies

Analogous

The Analogous color harmony consists of three colors that are next to each other on the color wheel.



B09EAE



B89CA4



BA9C9A

Triad

The Triadic color harmony groups three colors that are evenly spaced from another and form a triangle on the color wheel.



B89CA4



A1A591



8DA7B5

Complementary

The Complementary color scheme is a pair of colors which are on the opposite of each other on the color wheel.



B89CA4



9CB8B0

Split Complementary

Split-complementary colors differ from the complementary color scheme. The scheme consists of three colors, the original color and two neighbors of the complement color.



88A9AD



B89CA4



95A898

Square

The Square scheme is like the rectangle color scheme, but the four colors are evenly spaced on the color wheel.



B89CA4



ACA28E



8CA9A2



97A4B8

Rectangle

The Rectangle color scheme consists of four colors that form a rectangle on the color wheel.



B89CA4



B79E94



8CA9A2



8AA8B2

Sweetspot

The Sweet Spot groups the original color and five complimentary colors.



B89CA4



F0E4E7



B09CB8



787173



F7F7F7



787878

Same Dimension

The Same Dimension uses a secret algorithm to generate beautiful new colors.



B89CA4



F0C5D1



B8A29C



5C5355



9C002C



1C0008

Inverse Universe

The Inverse Universe completely reimagines the original color for something new.



B89CA4



F0C5D1



9CB2B8



5C5355



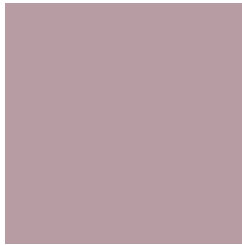
9C002C



1C0008

Previews

White Background



This preview shows how the Hex color B89CA4 looks on a white background.

Color Contrast Check

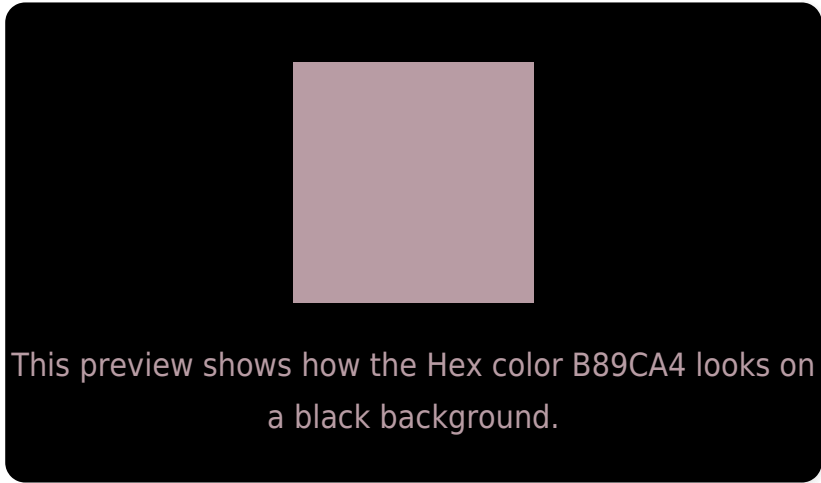
Large Text (above 18pt) WCAG AA × Fail

Any Text WCAG AA × Fail

Large Text (above 18pt) WCAG AAA × Fail

Any Text WCAG AAA × Fail

Black Background



Color Contrast Check

Large Text (above 18pt) WCAG AA ✓ Pass

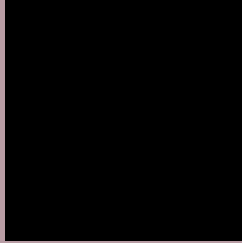
Any Text WCAG AA ✓ Pass

Large Text (above 18pt) WCAG AAA ✓ Pass

Any Text WCAG AAA ✓ Pass

If you want to check with other color combinations, try the [Color Contrast Checker](#).

Hex B89CA4 Background



This preview shows how black text looks on a background with the Hex color B89CA4.

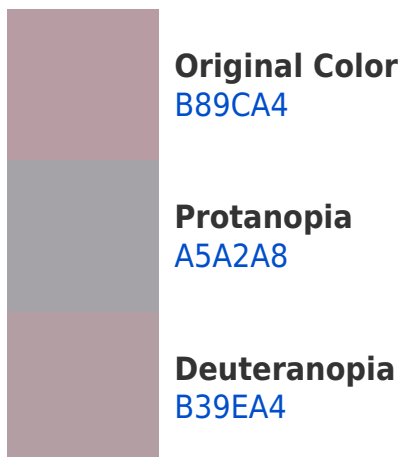


This preview shows how white text looks on a background with the Hex color B89CA4.

Color Blindness Simulation

Color vision deficiency is a very complex topic, and I could not describe the different causes any better than Wikipedia does, so if you want to learn more, you should check out their [article about color blindness](#).

Dichromacy





Tritanopia
B89BA8

Trichromacy



Original Color
B89CA4

Protanomaly
ACA0A7

Deuteranomaly
B59DA4

Tritanomaly
B89BA7

Monochromacy



Original Color
B89CA4

Achromatopsia
A5A5A5

Achromatomaly
ACA2A5

CSS Examples

Text

The CSS property to change the color of the text to Hex B89CA4 is called "color". The color property can be set on classes, ids or directly on the HTML element.

This example shows how text in the color #B89CA4 looks like.

```
.text, #text, p{  
    color:#B89CA4  
}
```

If you want to add a text shadow in that color use the text-shadow property, you can generate a text shadow directly with our [CSS Text Shadow Generator](#).

Here you see how black text with a 4 pixel #B89CA4 colored shadow looks like.

```
.shadow{ text-shadow: 4px 4px 2px #B89CA4
}
```

Border

The CSS property to change the border of an element to Hex B89CA4 is called "border". The border property can be set on classes, ids or directly on the HTML element.

This example shows the color as border, it can be applied via the CSS property "border" or "border-color".

```
.border, #border, table{ border:4px solid
#B89CA4 }
```

If only the border color should be changed use the property `border-color`.

```
.border{ border-color:#B89CA4 }
```

If you want to add a box shadow in that color use:

Here you see how a box with a 4 pixel #B89CA4 colored shadow looks like.

```
.boxshadow{ -moz-box-shadow:4px 4px 4px  
4px #B89CA4; -webkit-box-shadow:4px 4px  
4px 4px #B89CA4; box-shadow:4px 4px 4px  
4px #B89CA4 }
```

Background

The CSS property to change the background color of an element to Hex B89CA4 is called "background". The background property can be set on classes, ids or directly on the HTML element.

```
.background, #background, body{  
background:#B89CA4 }
```

If only the background color should be changed can be used:

```
.background{ background-color:#B89CA4 }
```

This example shows the color as background, it is applied via the CSS property "background".

To optimize and compress your CSS code, you can use our [online CSS compressor and optimizer](#) based on csstidy. If you want to create a linear or radial gradient as background or border, check our [CSS Gradient Generator](#).

Hey! You found this booklet interesting? Support Converting Colors with the new Membership Option!

The pro membership hides all ads, plus gives you double the colors in the color bucket, and more awesome pro features!

[Learn more, Memberships starting at \\$2.50/m!](#)

**Follow me
on Twitter!**

@ConvertingColor