

# Converting Colors

Hex(B8A38B)

Have a look what the booklet for  
Hex(B8A38B) contains.

<b>Hex(B8A38B)</b> .....	3
<i><b>Conversions</b></i> .....	4
<i><b>Details</b></i> .....	6
<i><b>Harmonies</b></i> .....	11
<i><b>Previews</b></i> .....	23
<i><b>Color Blindness Simulation</b></i> .....	26
<i><b>CSS Examples</b></i> .....	29

# **Color**

**Hex(B8A38B)**

# Conversions

## Conversions Part 1

<b>Format</b>	<b>Color</b>
Hex	B8A38B
RGB	184, 163, 139
RGB Percent	72%, 64%, 55%
CMY	0.2784, 0.3608, 0.4549
CMYK	0.00, 0.11, 0.24, 0.28
HSL	32°, 24%, 63%
HSV	32°, 24%, 72%
XYZ	37.5246, 38.2488, 29.8311
YIQ	166.5430, 20.2200, -3.0120

# Conversions

## Conversions Part 2

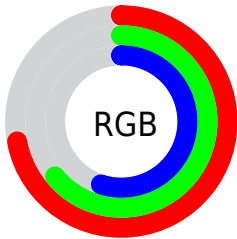
Format	Color
<a href="#">RYB</a>	<a href="#">178, 184, 139</a>
Decimal	<a href="#">12100491</a>
CIELab	<a href="#">68.20, 3.85, 15.28</a>
CIElCh	<a href="#">68, 15.760, 75.848</a>
Yxy	<a href="#">38.2488, 0.3553, 0.3622</a>
Android (android.graphics.Color)	<a href="#">4290290571 (0xFFB8A38B)</a>
YUV	<a href="#">166.5430, -13.5787, 15.3098</a>
Hunter-Lab	<a href="#">61.8456, 0.0742, 14.6935</a>

# Details

The Hex color **B8A38B** is a light color, and the websafe version is hex **999999**. A complement of this color would be **8BA0B8**, and the grayscale version is **A7A7A7**.

A 20% lighter version of the original color is **F0DAC1**, and **826F59** is the 20% darker color. If you saturate the color by 10%, you get **B89A79**, and if you desaturate by 10%, it is **B8AC9D**.

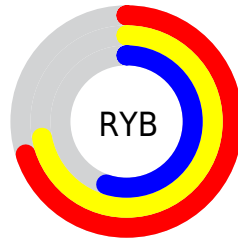
# Distribution



Red (72%)

Green (64%)

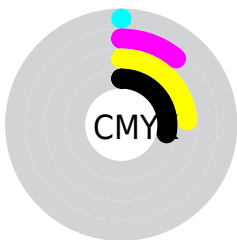
Blue (55%)



Red (70%)

Yellow (72%)

Blue (55%)

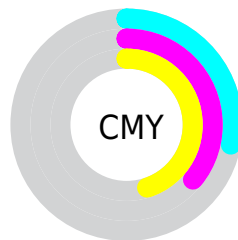


Cyan (0%)

Magenta (11%)

Yellow (24%)

Black (28%)



Cyan (28%)

Magenta (36%)

Yellow (45%)

# Brightness & Saturation Gradients

These gradients show how the Hex color B8A38B changes by changing the brightness by 10 percent. The first figure shows a shift by +10% for each color and the second figure -10%.

Similar to the brightness gradients but the following saturation gradients show a change of the Hex color B8A38B by changing the saturation by 10% instead.





B8A38B



B8A38B

FFFFFF



9D8971



F0DAC1



826F59



FFF6DC



695741



FFFFFF9



50402B



392A16



241500



000000



B8A38B



B8A38B



B89A79



B8AC9D

 B89266

 B8B4B0

 B88954

 B8BDC2

 B88141

 B8C5D5

 B8782F

 B8CEE7

 B86F1D

 B8D7F9

 B8670A

 B8DFFF

 B86200

 B8E8FF

 B8F0FF

# Harmonies

## Analogous

The Analogous color harmony consists of three colors that are next to each other on the color wheel.



C29F92



B8A38B



AAA88B

# Triad

The Triadic color harmony groups three colors that are evenly spaced from another and form a triangle on the color wheel.



B8A38B



82AFAD



B2A0BA

# Complementary

The Complementary color scheme is a pair of colors which are on the opposite of each other on the color wheel.



B8A38B



8BA0B8

# Split Complementary

Split-complementary colors differ from the complementary color scheme. The scheme consists of three colors, the original color and two neighbors of the complement color.



A0A5C1



B8A38B



83ADBA

# Square

The Square scheme is like the rectangle color scheme, but the four colors are evenly spaced on the color wheel.



B8A38B



8AAE9F



8FAAC1



BF9DAE

# Rectangle

The Rectangle color scheme consists of four colors that form a rectangle on the color wheel.



B8A38B



9FAA8F



8FAAC1



ACA2BD

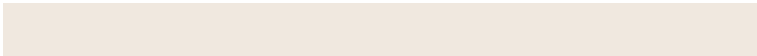


# Sweetspot

The Sweet Spot groups the original color and five complimentary colors.



**B8A38B**



**F0E8DF**



**B88BA0**



**78736E**



**F7F7F7**



**787878**



# Same Dimension

The Same Dimension uses a secret algorithm to generate beautiful new colors.



B8A38B



F0CFAA



B7B88B



5C5853



9C5300



1C0F00



# Inverse Universe

The Inverse Universe completely reimagines the original color for something new.



8BA0B8



AACBF0



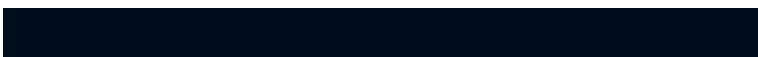
8C8BB8



53575C



00499C

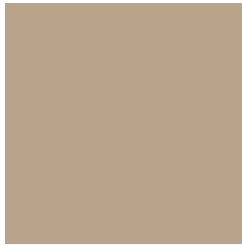


000D1C



# Previews

## White Background



This preview shows how the Hex color B8A38B looks on a white background.

## Color Contrast Check

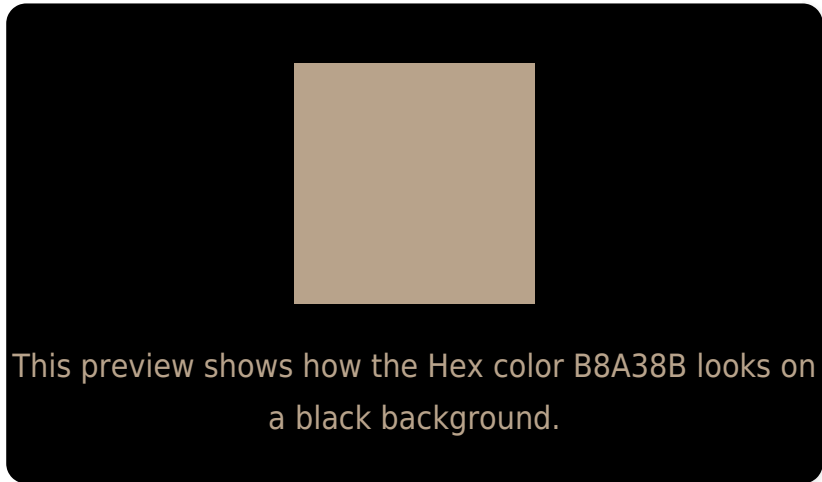
Large Text (above 18pt) WCAG AA × Fail

Any Text WCAG AA × Fail

Large Text (above 18pt) WCAG AAA × Fail

Any Text WCAG AAA × Fail

# Black Background



## Color Contrast Check

Large Text (above 18pt) WCAG AA ✓ Pass

Any Text WCAG AA ✓ Pass

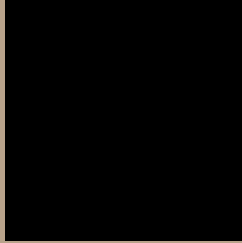
Large Text (above 18pt) WCAG AAA ✓ Pass

Any Text WCAG AAA ✓ Pass

If you want to check with other color combinations, try the [Color Contrast Checker](#).



## Hex B8A38B Background



This preview shows how black text looks on a background with the Hex color B8A38B.

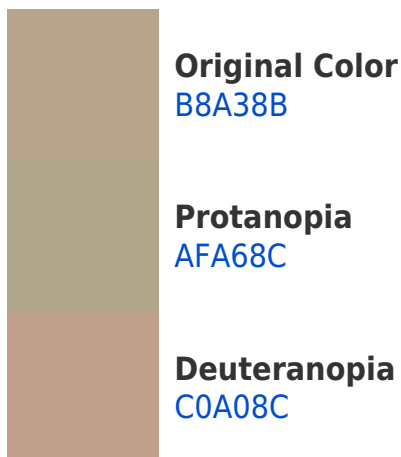


This preview shows how white text looks on a background with the Hex color B8A38B.

# Color Blindness Simulation

Color vision deficiency is a very complex topic, and I could not describe the different causes any better than Wikipedia does, so if you want to learn more, you should check out their [article about color blindness](#).

## Dichromacy





**Tritanopia**  
BC9EAB

# Trichromacy



**Original Color**  
B8A38B

**Protanomaly**  
B2A58C

**Deuteranomaly**  
BDA18C

**Tritanomaly**  
BBA09F

# Monochromacy



**Original Color**  
B8A38B

**Achromatopsia**  
A7A7A7

**Achromatomaly**  
ADA69D

# CSS Examples

## Text

The CSS property to change the color of the text to Hex B8A38B is called "color". The color property can be set on classes, ids or directly on the HTML element.

This example shows how text in the color #B8A38B looks like.

```
.text, #text, p{  
    color:#B8A38B  
}
```

If you want to add a text shadow in that color use the text-shadow property, you can generate a text shadow directly with our [CSS Text Shadow Generator](#).

Here you see how black text with a 4 pixel #B8A38B colored shadow looks like.

```
.shadow{ text-shadow: 4px 4px 2px #B8A38B
}
```

## Border

The CSS property to change the border of an element to Hex B8A38B is called "border". The border property can be set on classes, ids or directly on the HTML element.

This example shows the color as border, it can be applied via the CSS property "border" or "border-color".

```
.border, #border, table{ border:4px solid
#B8A38B }
```

If only the border color should be changed use the property `border-color`.

```
.border{ border-color:#B8A38B }
```

If you want to add a box shadow in that color use:

Here you see how a box with a 4 pixel #B8A38B colored shadow looks like.

```
.boxshadow{ -moz-box-shadow:4px 4px 4px  
4px #B8A38B; -webkit-box-shadow:4px 4px  
4px 4px #B8A38B; box-shadow:4px 4px 4px  
4px #B8A38B }
```

# Background

The CSS property to change the background color of an element to Hex B8A38B is called "background". The background property can be set on classes, ids or directly on the HTML element.

```
.background, #background, body{  
background:#B8A38B }
```

If only the background color should be changed can be used:

```
.background{ background-color:#B8A38B }
```

This example shows the color as background, it is applied via the CSS property "background".

To optimize and compress your CSS code, you can use our [online CSS compressor and optimizer](#) based on csstidy. If you want to create a linear or radial gradient as background or border, check our [CSS Gradient Generator](#).



Hey! You found this booklet interesting? Support Converting Colors with the new Membership Option!

The pro membership hides all ads, plus gives you double the colors in the color bucket, and more awesome pro features!

**[Learn more, Memberships starting at \\$2.50/m!](#)**

**Follow me  
on Twitter!**

@ConvertingColor