

Converting Colors

Hex(B8A3A3)

Have a look what the booklet for
Hex(B8A3A3) contains.

| | |
|--|----|
| Hex(B8A3A3) | 3 |
| <i>Conversions</i> | 4 |
| <i>Details</i> | 6 |
| <i>Harmonies</i> | 11 |
| <i>Previews</i> | 23 |
| <i>Color Blindness Simulation</i> | 26 |
| <i>CSS Examples</i> | 29 |

Color

Hex(B8A3A3)

Conversions

Conversions Part 1

| Format | Color |
|-------------|---------------------------|
| Hex | B8A3A3 |
| RGB | 184, 163, 163 |
| RGB Percent | 72%, 64%, 64% |
| CMY | 0.2784, 0.3608, 0.3608 |
| CMYK | 0.00, 0.11, 0.11, 0.28 |
| HSL | 0°, 13%, 68% |
| HSV | 0°, 11%, 72% |
| XYZ | 39.4752, 39.0291, 40.1031 |
| YIQ | 169.2790, 12.5160, 4.4520 |

Conversions

Conversions Part 2

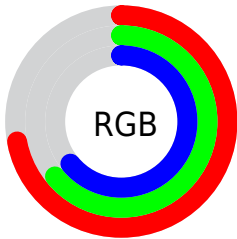
| Format | Color |
|-------------------------------------|-------------------------------|
| RYB | 184, 163, 163 |
| Decimal | 12100515 |
| CIELab | 68.77, 7.65, 2.80 |
| CIELCh | 69, 8.146, 20.079 |
| Yxy | 39.0291, 0.3328, 0.3291 |
| Android (android.graphics.Color) | 4290290595 (0xFFB8A3A3) |
| YUV | 169.2790, -3.0955, 12.9103 |
| Hunter-Lab | 62.4733, 3.4613, 5.6716 |

Details

The Hex color **B8A3A3** is a light color, and the websafe version is hex **999999**. A complement of this color would be **A3B8B8**, and the grayscale version is **A9A9A9**.

A 20% lighter version of the original color is **F0DADA**, and **836F6F** is the 20% darker color. If you saturate the color by 10%, you get **B89191**, and if you desaturate by 10%, it is **B8B5B5**.

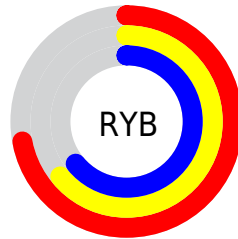
Distribution



Red (72%)

Green (64%)

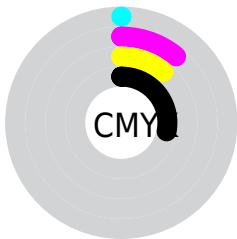
Blue (64%)



Red (72%)

Yellow (64%)

Blue (64%)

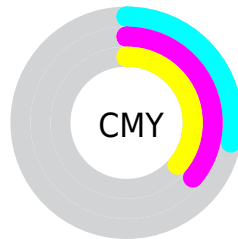


Cyan (0%)

Magenta (11%)

Yellow (11%)

Black (28%)



Cyan (28%)

Magenta (36%)

Yellow (36%)

Brightness & Saturation Gradients

These gradients show how the Hex color B8A3A3 changes by changing the brightness by 10 percent. The first figure shows a shift by +10% for each color and the second figure -10%.

Similar to the brightness gradients but the following saturation gradients show a change of the Hex color B8A3A3 by changing the saturation by 10% instead.



B8A3A3



B8A3A3

FFFFFF



9D8989



F0DADA



836F6F



FFF6F6



6A5757



514040



3A2A2A



241515



060000




000000



B8A3A3



B8A3A3

 B89191

 B8B5B5

 B87E7E

 B8C8C8

 B86C6C

 B8DADA

 B85959

 B8EDED

 B84747

 B8FFFF

 B83535

 B82222

 B81010

 B80000

Harmonies

Analogous

The Analogous color harmony consists of three colors that are next to each other on the color wheel.



B6A3AB



B8A3A3



B6A49D

Triad

The Triadic color harmony groups three colors that are evenly spaced from another and form a triangle on the color wheel.



B8A3A3



A0AB9E



9EA9B6

Complementary

The Complementary color scheme is a pair of colors which are on the opposite of each other on the color wheel.



B8A3A3



A3B8B8

Split Complementary

Split-complementary colors differ from the complementary color scheme. The scheme consists of three colors, the original color and two neighbors of the complement color.



97ABB3



B8A3A3



99ACA5

Square

The Square scheme is like the rectangle color scheme, but the four colors are evenly spaced on the color wheel.



B8A3A3



A9A99A



96ACAD



A6A7B6

Rectangle

The Rectangle color scheme consists of four colors that form a rectangle on the color wheel.



B8A3A3



B3A69A



96ACAD



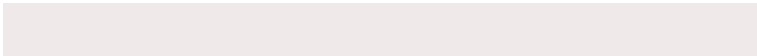
9BAAB5

Sweetspot

The Sweet Spot groups the original color and five complimentary colors.



B8A3A3



F0E9E9



B8A3B8



787373



F7F7F7



787878

Same Dimension

The Same Dimension uses a secret algorithm to generate beautiful new colors.



B8A3A3



F0CECE



B8ADA3



5C5353



9C0000



1C0000

Inverse Universe

The Inverse Universe completely reimagines the original color for something new.



A3B8B8



CEF0F0



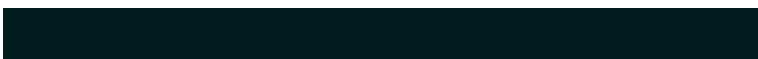
A3ADB8



535C5C



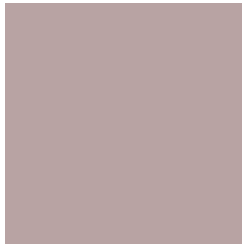
009C9C



001C1C

Previews

White Background



This preview shows how the Hex color B8A3A3 looks on a white background.

Color Contrast Check

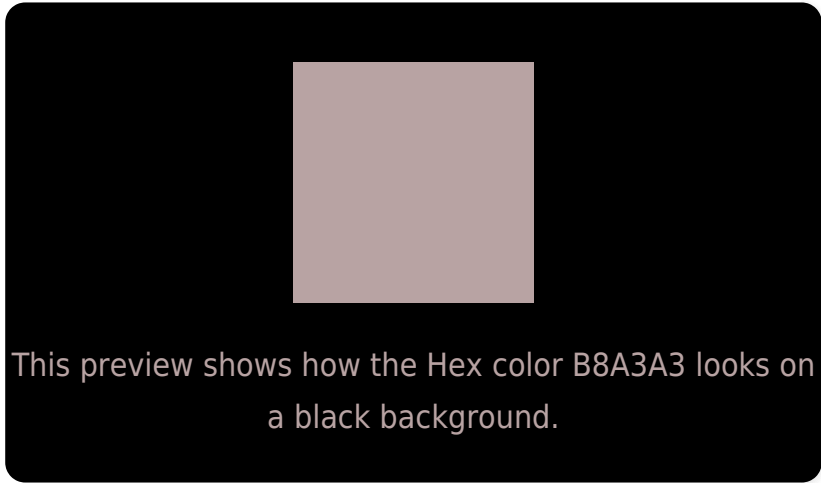
Large Text (above 18pt) WCAG AA × Fail

Any Text WCAG AA × Fail

Large Text (above 18pt) WCAG AAA × Fail

Any Text WCAG AAA × Fail

Black Background



Color Contrast Check

Large Text (above 18pt) WCAG AA ✓ Pass

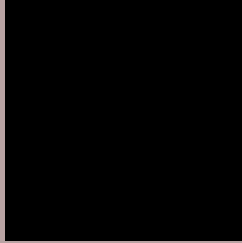
Any Text WCAG AA ✓ Pass

Large Text (above 18pt) WCAG AAA ✓ Pass

Any Text WCAG AAA ✓ Pass

If you want to check with other color combinations, try the [Color Contrast Checker](#).

Hex B8A3A3 Background



This preview shows how black text looks on a background with the Hex color B8A3A3.



This preview shows how white text looks on a background with the Hex color B8A3A3.

Color Blindness Simulation

Color vision deficiency is a very complex topic, and I could not describe the different causes any better than Wikipedia does, so if you want to learn more, you should check out their [article about color blindness](#).

Dichromacy



Original Color
B8A3A3

Protanopia
ABA7A5

Deuteranopia
BAA2A3



Tritanopia
B9A1AE

Trichromacy



Original Color
B8A3A3

Protanomaly
B0A6A4

Deuteranomaly
B9A2A3

Tritanomaly
B9A2AA

Monochromacy



Original Color
B8A3A3

Achromatopsia
A9A9A9

Achromatomaly
AEA7A7

CSS Examples

Text

The CSS property to change the color of the text to Hex B8A3A3 is called "color". The color property can be set on classes, ids or directly on the HTML element.

This example shows how text in the color #B8A3A3 looks like.

```
.text, #text, p{  
    color:#B8A3A3  
}
```

If you want to add a text shadow in that color use the text-shadow property, you can generate a text shadow directly with our [CSS Text Shadow Generator](#).

Here you see how black text with a 4 pixel #B8A3A3 colored shadow looks like.

```
.shadow{ text-shadow: 4px 4px 2px #B8A3A3  
}
```

Border

The CSS property to change the border of an element to Hex B8A3A3 is called "border". The border property can be set on classes, ids or directly on the HTML element.

This example shows the color as border, it can be applied via the CSS property "border" or "border-color".

```
.border, #border, table{ border:4px solid  
#B8A3A3 }
```

If only the border color should be changed use the property `border-color`.

```
.border{ border-color:#B8A3A3 }
```

If you want to add a box shadow in that color use:

Here you see how a box with a 4 pixel #B8A3A3 colored shadow looks like.

```
.boxshadow{ -moz-box-shadow:4px 4px 4px  
4px #B8A3A3; -webkit-box-shadow:4px 4px  
4px 4px #B8A3A3; box-shadow:4px 4px 4px  
4px #B8A3A3 }
```

Background

The CSS property to change the background color of an element to Hex B8A3A3 is called "background". The background property can be set on classes, ids or directly on the HTML element.

```
.background, #background, body{  
background:#B8A3A3 }
```

If only the background color should be changed can be used:

```
.background{ background-color:#B8A3A3 }
```

This example shows the color as background, it is applied via the CSS property "background".

To optimize and compress your CSS code, you can use our [online CSS compressor and optimizer](#) based on csstidy. If you want to create a linear or radial gradient as background or border, check our [CSS Gradient Generator](#).

Hey! You found this booklet interesting? Support Converting Colors with the new Membership Option!

The pro membership hides all ads, plus gives you double the colors in the color bucket, and more awesome pro features!

[Learn more, Memberships starting at \\$2.50/m!](#)

**Follow me
on Twitter!**

@ConvertingColor