

Converting Colors

Hex(B96F6F)

Have a look what the booklet for
Hex(B96F6F) contains.

Hex(B96F6F)	3
<i>Conversions</i>	4
<i>Details</i>	6
<i>Harmonies</i>	11
<i>Previews</i>	23
<i>Color Blindness Simulation</i>	26
<i>CSS Examples</i>	29

Color

Hex(**B96F6F**)

Conversions

Conversions Part 1

Format	Color
Hex	B96F6F
RGB	185, 111, 111
RGB Percent	73%, 44%, 44%
CMY	0.2745, 0.5647, 0.5647
CMYK	0.00, 0.40, 0.40, 0.27
HSL	0°, 35%, 58%
HSV	0°, 40%, 73%
XYZ	28.5613, 22.8309, 17.9404
YIQ	133.1260, 44.1040, 15.6880

Conversions

Conversions Part 2

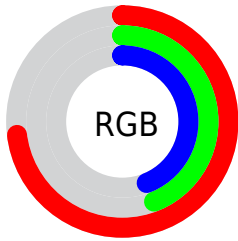
Format	Color
R_{YB}	185, 111, 111
Decimal	12152687
CIE _{Lab}	54.90, 29.31, 12.59
CIE _{LCh}	55, 31.898, 23.252
Yxy	22.8309, 0.4119, 0.3293
Android (android.graphics.Color)	4290342767 (0xFFB96F6F)
YUV	133.1260, -10.9081, 45.4935
Hunter-Lab	47.7817, 23.0797, 11.1858

Details

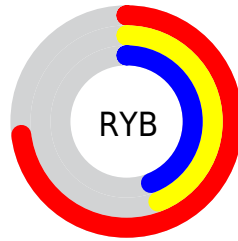
The Hex color **B96F6F** is a dark color, and the websafe version is hex **996666**. A complement of this color would be **6FB9B9**, and the grayscale version is **858585**.

A 20% lighter version of the original color is **F3A4A3**, and **813E3F** is the 20% darker color. If you saturate the color by 10%, you get **B95D5D**, and if you desaturate by 10%, it is **B98282**.

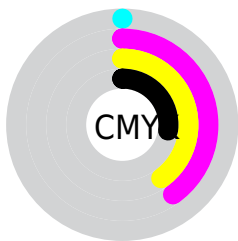
Distribution



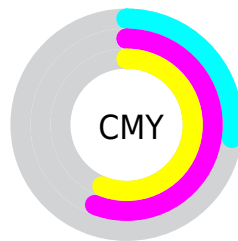
- Red (73%)
- Green (44%)
- Blue (44%)



- Red (73%)
- Yellow (44%)
- Blue (44%)



- Cyan (0%)
- Magenta (40%)
- Yellow (40%)
- Black (27%)



- Cyan (27%)
- Magenta (56%)
- Yellow (56%)

Brightness & Saturation Gradients

These gradients show how the Hex color B96F6F changes by changing the brightness by 10 percent. The first figure shows a shift by +10% for each color and the second figure -10%.

Similar to the brightness gradients but the following saturation gradients show a change of the Hex color B96F6F by changing the saturation by 10% instead.



B96F6F



B96F6F

FFFFFF



9D5657



F3A4A3



813E3F



FFBFBE



66262A



FFDBD9



4C0E15



FFF8F6



330000



110000



000000



B96F6F



B96F6F



B95D5D



B98282

 B94A4A

 B99494

 B93838

 B9A7A7

 B92525

 B9B9B9

 B91212

 B9CCCC

 B90000

 B9DEDE

 B9F1F1

 B9FFFF

Harmonies

Analogous

The Analogous color harmony consists of three colors that are next to each other on the color wheel.



B46E8B



B96F6F



AF7658

Triad

The Triadic color harmony groups three colors that are evenly spaced from another and form a triangle on the color wheel.



B96F6F



5F8F61



5088BA

Complementary

The Complementary color scheme is a pair of colors which are on the opposite of each other on the color wheel.



B96F6F



6FB9B9

Split Complementary

Split-complementary colors differ from the complementary color scheme. The scheme consists of three colors, the original color and two neighbors of the complement color.



198FAF



B96F6F



3A927C

Square

The Square scheme is like the rectangle color scheme, but the four colors are evenly spaced on the color wheel.



B96F6F



808850



089298



7D7FB6

Rectangle

The Rectangle color scheme consists of four colors that form a rectangle on the color wheel.



B96F6F



A37C4F



089298



3E8BB8

Sweetspot

The Sweet Spot groups the original color and five complimentary colors.



B96F6F



F0D3D3



B96FB9



786767



F7F7F7



787878

Same Dimension

The Same Dimension uses a secret algorithm to generate beautiful new colors.



B96F6F



F07D7D



B9946F



5C5353



9C0000



1C0000

Inverse Universe

The Inverse Universe completely reimagines the original color for something new.



6FB9B9



7DF0F0



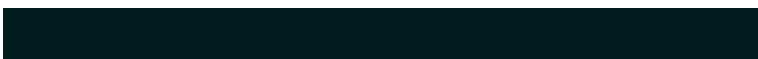
6F94B9



535C5C



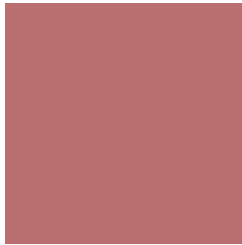
009C9C



001C1C

Previews

White Background



This preview shows how the Hex color B96F6F looks on a white background.

Color Contrast Check

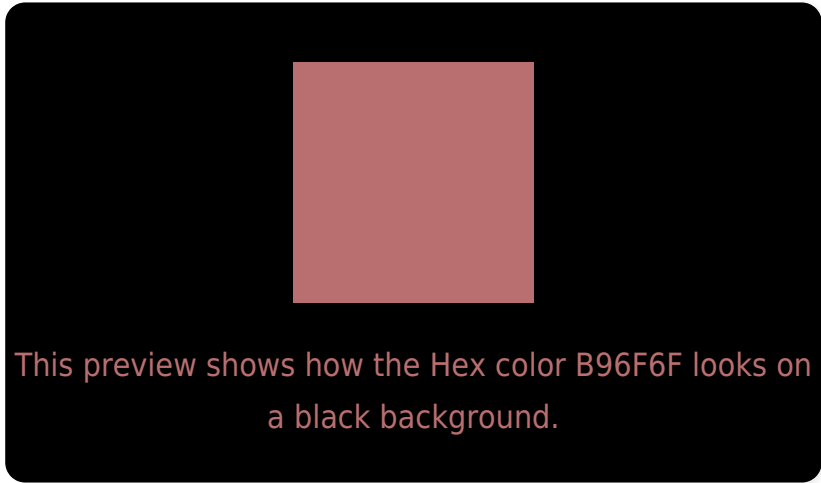
Large Text (above 18pt) WCAG AA ✓ Pass

Any Text WCAG AA × Fail

Large Text (above 18pt) WCAG AAA × Fail

Any Text WCAG AAA × Fail

Black Background



Color Contrast Check

Large Text (above 18pt) WCAG AA ✓ Pass

Any Text WCAG AA ✓ Pass

Large Text (above 18pt) WCAG AAA ✓ Pass

Any Text WCAG AAA × Fail

If you want to check with other color combinations, try the [Color Contrast Checker](#).

Hex B96F6F Background



This preview shows how black text looks on a background with the Hex color B96F6F.




This preview shows how white text looks on a background with the Hex color B96F6F.

Color Blindness Simulation

Color vision deficiency is a very complex topic, and I could not describe the different causes any better than Wikipedia does, so if you want to learn more, you should check out their [article about color blindness](#).

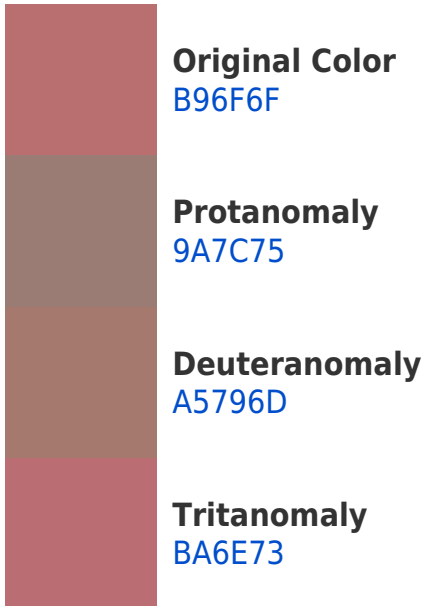
Dichromacy





Tritanopia
BA6E76

Trichromacy



Monochromacy



CSS Examples

Text

The CSS property to change the color of the text to Hex B96F6F is called "color". The color property can be set on classes, ids or directly on the HTML element.

This example shows how text in the color #B96F6F looks like.

```
.text, #text, p{  
    color:#B96F6F  
}
```

If you want to add a text shadow in that color use the text-shadow property, you can generate a text shadow directly with our [CSS Text Shadow Generator](#).

Here you see how black text with a 4 pixel #B96F6F colored shadow looks like.

```
.shadow{ text-shadow: 4px 4px 2px #B96F6F
}
```

Border

The CSS property to change the border of an element to Hex B96F6F is called "border". The border property can be set on classes, ids or directly on the HTML element.

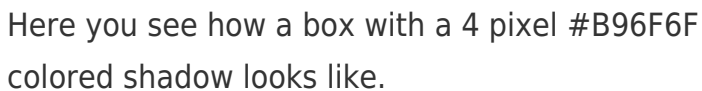
This example shows the color as border, it can be applied via the CSS property "border" or "border-color".

```
.border, #border, table{ border:4px solid
#B96F6F }
```

If only the border color should be changed use the property `border-color`.

```
.border{ border-color:#B96F6F }
```

If you want to add a box shadow in that color use:



Here you see how a box with a 4 pixel #B96F6F colored shadow looks like.

```
.boxshadow{ -moz-box-shadow:4px 4px 4px  
4px #B96F6F; -webkit-box-shadow:4px 4px  
4px 4px #B96F6F; box-shadow:4px 4px 4px  
4px #B96F6F }
```

Background

The CSS property to change the background color of an element to Hex B96F6F is called "background". The background property can be set on classes, ids or directly on the HTML element.

```
.background, #background, body{  
background:#B96F6F }
```

If only the background color should be changed can be used:

```
.background{ background-color:#B96F6F }
```

This example shows the color as background, it is applied via the CSS property "background".

To optimize and compress your CSS code, you can use our [online CSS compressor and optimizer](#) based on csstidy. If you want to create a linear or radial gradient as background or border, check our [CSS Gradient Generator](#).

Hey! You found this booklet interesting? Support Converting Colors with the new Membership Option!

The pro membership hides all ads, plus gives you double the colors in the color bucket, and more awesome pro features!

[Learn more, Memberships starting at \\$2.50/m!](#)

**Follow me
on Twitter!**

@ConvertingColor