

# Converting Colors

Hex(B97677)

Have a look what the booklet for  
Hex(B97677) contains.

|  |    |
|--|----|
| <b>Hex(B97677)</b> .....                       | 3  |
| <b><i>Conversions</i></b> .....                | 4  |
| <b><i>Details</i></b> .....                    | 6  |
| <b><i>Harmonies</i></b> .....                  | 11 |
| <b><i>Previews</i></b> .....                   | 23 |
| <b><i>Color Blindness Simulation</i></b> ..... | 26 |
| <b><i>CSS Examples</i></b> .....               | 29 |

**Color**

**Hex(B97677)**

# Conversions

## Conversions Part 1

| <b>Format</b> | <b>Color</b>                               |
|---------------|--|
| Hex           | <a href="#">B97677</a>                     |
| RGB           | <a href="#">185, 118, 119</a>              |
| RGB Percent   | <a href="#">73%, 46%, 47%</a>              |
| CMY           | <a href="#">0.2745, 0.5373, 0.5333</a>     |
| CMYK          | <a href="#">0.00, 0.36, 0.36, 0.27</a>     |
| HSL           | <a href="#">359°, 32%, 59%</a>             |
| HSV           | <a href="#">359°, 36%, 73%</a>             |
| XYZ           | <a href="#">29.8158, 24.6031, 20.6302</a>  |
| YIQ           | <a href="#">138.1470, 39.6110, 14.5150</a> |

# Conversions

## Conversions Part 2

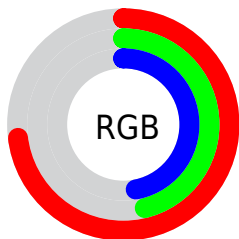
| <b>Format</b>                       | <b>Color</b>                  |
|-------------------------------------|-------------------------------|
| <b>R<sub>YB</sub></b>               | 185, 118, 119                 |
| Decimal                             | 12154487                      |
| CIE <sub>Lab</sub>                  | 56.69, 26.43, 10.45           |
| CIE <sub>LCh</sub>                  | 57, 28.421, 21.574            |
| Yxy                                 | 24.6031, 0.3973,<br>0.3278    |
| Android<br>(android.graphics.Color) | 4290344567<br>(0xFFB97677)    |
| YUV                                 | 138.1470, -9.4395,<br>41.0901 |
| Hunter-Lab                          | 49.6015, 20.4950,<br>10.0612  |

# Details

The Hex color **B97677** is a dark color, and the websafe version is hex **996666**. A complement of this color would be **76B9B8**, and the grayscale version is **8A8A8A**.

A 20% lighter version of the original color is **F3ABAB**, and **824447** is the 20% darker color. If you saturate the color by 10%, you get **B96465**, and if you desaturate by 10%, it is **B98989**.

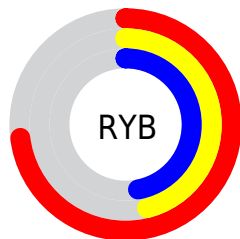
# Distribution



Red (73%)

Green (46%)

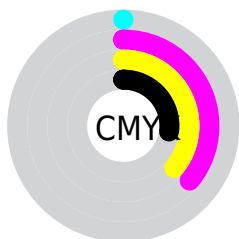
Blue (47%)



Red (73%)

Yellow (46%)

Blue (47%)

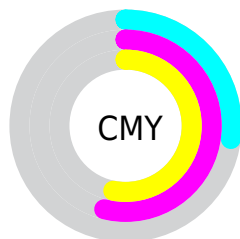


Cyan (0%)

Magenta (36%)

Yellow (36%)

Black (27%)



Cyan (27%)

Magenta (54%)

Yellow (53%)

# Brightness & Saturation Gradients

These gradients show how the Hex color B97677 changes by changing the brightness by 10 percent. The first figure shows a shift by +10% for each color and the second figure -10%.

Similar to the brightness gradients but the following saturation gradients show a change of the Hex color B97677 by changing the saturation by 10% instead.



 B97677

 B97677

FFFFFF

 9D5D5E

 F3ABAB

 824447

 FFC6C6

 672D30

 FFE3E2

 4D161C

 350000

 190001

 000000

 B97677

 B97677

 B96465

 B98989

 B95153

 B99B9B

 B93F40

 B9AEAE

 B92C2E

 B9C0C0

 B91A1C

 B9D3D2

 B9070A

 B9E5E4

 B90003

 B9F8F7

 B9FFFF

# Harmonies

## Analogous

The Analogous color harmony consists of three colors that are next to each other on the color wheel.



B47690



B97677



B17C62

# Triad

The Triadic color harmony groups three colors that are evenly spaced from another and form a triangle on the color wheel.



B97677



6A9268



5B8CB8

# Complementary

The Complementary color scheme is a pair of colors which are on the opposite of each other on the color wheel.



B97677



76B9B8

# Split Complementary

Split-complementary colors differ from the complementary color scheme. The scheme consists of three colors, the original color and two neighbors of the complement color.



3992AE



B97677



4C9580

# Square

The Square scheme is like the rectangle color scheme, but the four colors are evenly spaced on the color wheel.



B97677



878C59



339599



8184B6

# Rectangle

The Rectangle color scheme consists of four colors that form a rectangle on the color wheel.



B97677



A68159



339599



4E8FB6



# Sweetspot

The Sweet Spot groups the original color and five complimentary colors.



B97677



F0D5D6



B876B9



786869



F7F7F7



787878



# Same Dimension

The Same Dimension uses a secret algorithm to generate beautiful new colors.



B97677



F0898A



B99676



5C5353



9C0002



1C0000



# Inverse Universe

The Inverse Universe completely reimagines the original color for something new.



B97677



F0898A



7699B9



5C5353



9C0002

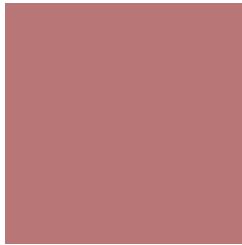


1C0000



# Previews

## White Background



This preview shows how the Hex color B97677 looks on a white background.

## Color Contrast Check

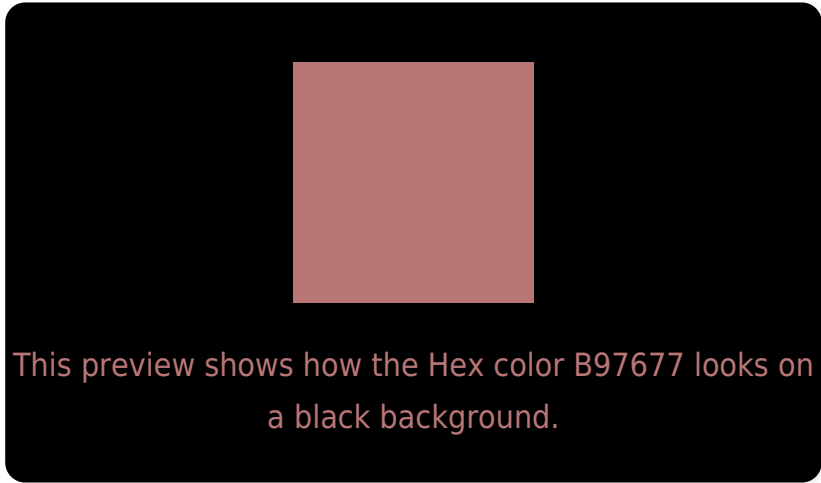
Large Text (above 18pt) WCAG AA ✓ Pass

Any Text WCAG AA ✗ Fail

Large Text (above 18pt) WCAG AAA ✗ Fail

Any Text WCAG AAA ✗ Fail

# Black Background



## Color Contrast Check

Large Text (above 18pt) WCAG AA ✓ Pass

Any Text WCAG AA ✓ Pass

Large Text (above 18pt) WCAG AAA ✓ Pass

Any Text WCAG AAA × Fail

If you want to check with other color combinations, try the [Color Contrast Checker](#).



## Hex B97677 Background



This preview shows how black text looks on a background with the Hex color B97677.



This preview shows how white text looks on a background with the Hex color B97677.

# Color Blindness Simulation

Color vision deficiency is a very complex topic, and I could not describe the different causes any better than Wikipedia does, so if you want to learn more, you should check out their [article about color blindness](#).

## Dichromacy





**Tritanopia**  
BA757E

# Trichromacy



**Original Color**  
B97677

**Protanomaly**  
9D817D

**Deuteranomaly**  
A77E76

**Tritanomaly**  
BA757B

# Monochromacy



**Original Color**  
B97677

**Achromatopsia**  
8A8A8A

**Achromatomaly**  
9B8383

# CSS Examples

## Text

The CSS property to change the color of the text to Hex B97677 is called "color". The color property can be set on classes, ids or directly on the HTML element.

This example shows how text in the color #B97677 looks like.

```
.text, #text, p{  
    color:#B97677  
}
```

If you want to add a text shadow in that color use the text-shadow property, you can generate a text shadow directly with our [CSS Text Shadow Generator](#).

Here you see how black text with a 4 pixel #B97677 colored shadow looks like.

```
.shadow{ text-shadow: 4px 4px 2px #B97677
}
```

## Border

The CSS property to change the border of an element to Hex B97677 is called "border". The border property can be set on classes, ids or directly on the HTML element.

This example shows the color as border, it can be applied via the CSS property "border" or "border-color".

```
.border, #border, table{ border:4px solid
#B97677 }
```

If only the border color should be changed use the property `border-color`.

```
.border{ border-color:#B97677 }
```

If you want to add a box shadow in that color use:

Here you see how a box with a 4 pixel #B97677 colored shadow looks like.

```
.boxshadow{ -moz-box-shadow:4px 4px 4px  
4px #B97677; -webkit-box-shadow:4px 4px  
4px 4px #B97677; box-shadow:4px 4px 4px  
4px #B97677 }
```

# Background

The CSS property to change the background color of an element to Hex B97677 is called "background". The background property can be set on classes, ids or directly on the HTML element.

```
.background, #background, body{  
background:#B97677 }
```

If only the background color should be changed can be used:

```
.background{ background-color:#B97677 }
```

This example shows the color as background, it is applied via the CSS property "background".

To optimize and compress your CSS code, you can use our [online CSS compressor and optimizer](#) based on csstidy. If you want to create a linear or radial gradient as background or border, check our [CSS Gradient Generator](#).



Hey! You found this booklet interesting? Support Converting Colors with the new Membership Option!

The pro membership hides all ads, plus gives you double the colors in the color bucket, and more awesome pro features!

**[Learn more, Memberships starting at \\$2.50/m!](#)**

**Follow me  
on Twitter!**

@ConvertingColor