

# Converting Colors

Hex(B98186)

Have a look what the booklet for  
Hex(B98186) contains.

<b>Hex(B98186)</b> .....	3
<i><b>Conversions</b></i> .....	4
<i><b>Details</b></i> .....	6
<i><b>Harmonies</b></i> .....	11
<i><b>Previews</b></i> .....	23
<i><b>Color Blindness Simulation</b></i> .....	26
<i><b>CSS Examples</b></i> .....	29

# **Color**

**Hex(B98186)**

# Conversions

## Conversions Part 1

Format	Color
Hex	B98186
RGB	185, 129, 134
RGB Percent	73%, 51%, 53%
CMY	0.2745, 0.4941, 0.4745
CMYK	0.00, 0.30, 0.28, 0.27
HSL	355°, 29%, 62%
HSV	355°, 30%, 73%
XYZ	32.1609, 27.7360, 26.2128
YIQ	146.3140, 31.7710, 13.4270

# Conversions

## Conversions Part 2

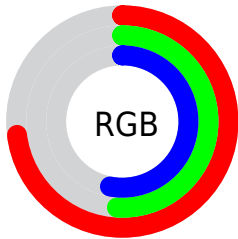
Format	Color
<a href="#">RYB</a>	<a href="#">185, 129, 134</a>
Decimal	<a href="#">12157318</a>
CIELab	<a href="#">59.65, 22.34, 6.01</a>
CIELCh	<a href="#">60, 23.137, 15.063</a>
Yxy	<a href="#">27.7360, 0.3735, 0.3221</a>
Android (android.graphics.Color)	<a href="#">4290347398</a> (0xFFB98186)
YUV	<a href="#">146.3140, -6.0708, 33.9276</a>
Hunter-Lab	<a href="#">52.6650, 16.8407, 7.3553</a>

# Details

The Hex color **B98186** is a light color, and the websafe version is hex **CC9999**. A complement of this color would be **81B9B4**, and the grayscale version is **929292**.

A 20% lighter version of the original color is **F2B6BB**, and **834F55** is the 20% darker color. If you saturate the color by 10%, you get **B96E75**, and if you desaturate by 10%, it is **B99397**.

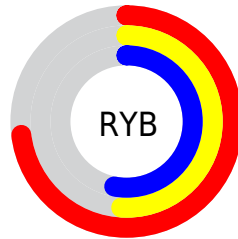
# Distribution



Red (73%)

Green (51%)

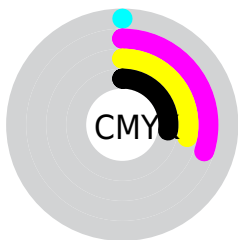
Blue (53%)



Red (73%)

Yellow (51%)

Blue (53%)

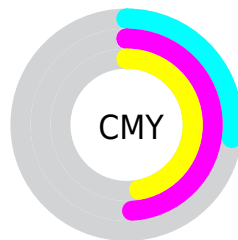


Cyan (0%)

Magenta (30%)

Yellow (28%)

Black (27%)



Cyan (27%)

Magenta (49%)

Yellow (47%)

# Brightness & Saturation Gradients

These gradients show how the Hex color B98186 changes by changing the brightness by 10 percent. The first figure shows a shift by +10% for each color and the second figure -10%.

Similar to the brightness gradients but the following saturation gradients show a change of the Hex color B98186 by changing the saturation by 10% instead.



 B98186

 B98186

FFFFFF

 9D686D

 F2B6BB

 834F55

 FFD2D7

 68383D

 FFEEF3

 4F2128

 360B13

 230001

 000000

 B98186

 B98186

 B96E75

 B99397

 B95C64

 B9A6A8

 B94953

 B9B8B9

 B93743

 B9CBC9

 B92532

 B9DDDA

 B91221

 B9F0EB

 B90011

 B9FFFC

 B9FFFF

# Harmonies

## Analogous

The Analogous color harmony consists of three colors that are next to each other on the color wheel.



B2829B



B98186



B58574

# Triad

The Triadic color harmony groups three colors that are evenly spaced from another and form a triangle on the color wheel.



B98186



7D9772



6995B6

# Complementary

The Complementary color scheme is a pair of colors which are on the opposite of each other on the color wheel.



B98186



81B9B4

# Split Complementary

Split-complementary colors differ from the complementary color scheme. The scheme consists of three colors, the original color and two neighbors of the complement color.



5599AC



B98186



669A85

# Square

The Square scheme is like the rectangle color scheme, but the four colors are evenly spaced on the color wheel.



B98186



949268



559B99



858EB7

# Rectangle

The Rectangle color scheme consists of four colors that form a rectangle on the color wheel.



B98186



AD896B



559B99



6096B4



# Sweetspot

The Sweet Spot groups the original color and five complimentary colors.



B98186



F0DADC



B381B9



786B6C



F7F7F7



787878



# Same Dimension

The Same Dimension uses a secret algorithm to generate beautiful new colors.



B98186



F099A1



B99781



5C5353



9C000E



1C0003



# Inverse Universe

The Inverse Universe completely reimagines the original color for something new.



B98186



F099A1



81A3B9



5C5353



9C000E

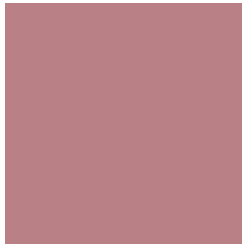


1C0003



# Previews

## White Background



This preview shows how the Hex color B98186 looks on a white background.

## Color Contrast Check

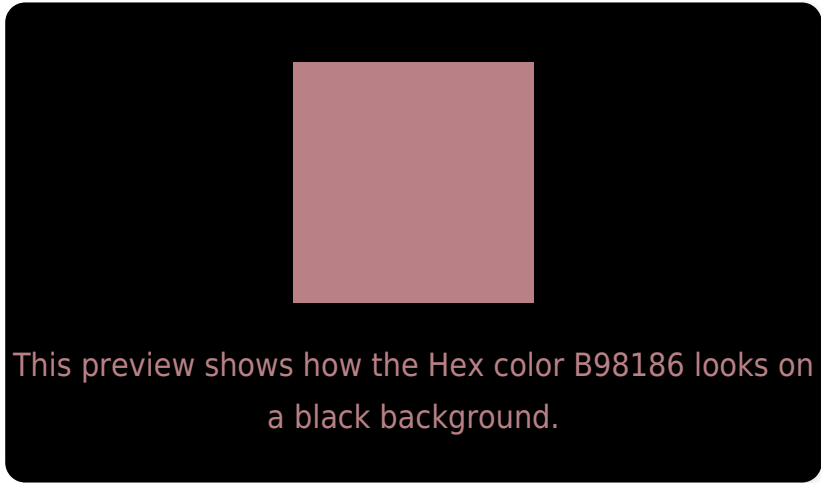
Large Text (above 18pt) WCAG AA ✓ Pass

Any Text WCAG AA × Fail

Large Text (above 18pt) WCAG AAA × Fail

Any Text WCAG AAA × Fail

# Black Background



## Color Contrast Check

Large Text (above 18pt) WCAG AA ✓ Pass

Any Text WCAG AA ✓ Pass

Large Text (above 18pt) WCAG AAA ✓ Pass

Any Text WCAG AAA × Fail

If you want to check with other color combinations, try the [Color Contrast Checker](#).



## Hex B98186 Background



This preview shows how black text looks on a background with the Hex color B98186.



This preview shows how white text looks on a background with the Hex color B98186.

# Color Blindness Simulation

Color vision deficiency is a very complex topic, and I could not describe the different causes any better than Wikipedia does, so if you want to learn more, you should check out their [article about color blindness](#).

## Dichromacy



**Original Color**  
B98186

**Protanopia**  
938F8E

**Deuteranopia**  
A28B84



**Tritanopia**  
B9808A

# Trichromacy



**Original Color**  
B98186

**Protanomaly**  
A18A8B

**Deuteranomaly**  
AA8785

**Tritanomaly**  
B98089

# Monochromacy



**Original Color**  
B98186

**Achromatopsia**  
929292

**Achromatomaly**  
A08C8E

# CSS Examples

## Text

The CSS property to change the color of the text to Hex B98186 is called "color". The color property can be set on classes, ids or directly on the HTML element.

This example shows how text in the color #B98186 looks like.

```
.text, #text, p{  
    color:#B98186  
}
```

If you want to add a text shadow in that color use the text-shadow property, you can generate a text shadow directly with our [CSS Text Shadow Generator](#).

Here you see how black text with a 4 pixel #B98186 colored shadow looks like.

```
.shadow{ text-shadow: 4px 4px 2px #B98186
}
```

## Border

The CSS property to change the border of an element to Hex B98186 is called "border". The border property can be set on classes, ids or directly on the HTML element.

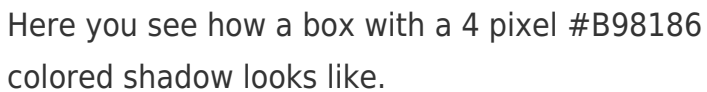
This example shows the color as border, it can be applied via the CSS property "border" or "border-color".

```
.border, #border, table{ border:4px solid
#B98186 }
```

If only the border color should be changed use the property `border-color`.

```
.border{ border-color:#B98186 }
```

If you want to add a box shadow in that color use:



Here you see how a box with a 4 pixel #B98186 colored shadow looks like.

```
.boxshadow{ -moz-box-shadow:4px 4px 4px  
4px #B98186; -webkit-box-shadow:4px 4px  
4px 4px #B98186; box-shadow:4px 4px 4px  
4px #B98186 }
```

# Background

The CSS property to change the background color of an element to Hex B98186 is called "background". The background property can be set on classes, ids or directly on the HTML element.

```
.background, #background, body{  
background:#B98186 }
```

If only the background color should be changed can be used:

```
.background{ background-color:#B98186 }
```

This example shows the color as background, it is applied via the CSS property "background".

To optimize and compress your CSS code, you can use our [online CSS compressor and optimizer](#) based on csstidy. If you want to create a linear or radial gradient as background or border, check our [CSS Gradient Generator](#).



Hey! You found this booklet interesting? Support Converting Colors with the new Membership Option!

The pro membership hides all ads, plus gives you double the colors in the color bucket, and more awesome pro features!

**[Learn more, Memberships starting at \\$2.50/m!](#)**

**Follow me  
on Twitter!**

@ConvertingColor