

Converting Colors

Hex(B98380)

Have a look what the booklet for
Hex(B98380) contains.

Hex(B98380)	3
<i>Conversions</i>	4
<i>Details</i>	6
<i>Harmonies</i>	11
<i>Previews</i>	23
<i>Color Blindness Simulation</i>	26
<i>CSS Examples</i>	29

Color

Hex(B98380)

Conversions

Conversions Part 1

Format	Color
Hex	B98380
RGB	185, 131, 128
RGB Percent	73%, 51%, 50%
CMY	0.2745, 0.4863, 0.4980
CMYK	0.00, 0.29, 0.31, 0.27
HSL	3°, 29%, 61%
HSV	3°, 31%, 73%
XYZ	32.0202, 28.1054, 24.1593
YIQ	146.8040, 33.1470, 10.5150

Conversions

Conversions Part 2

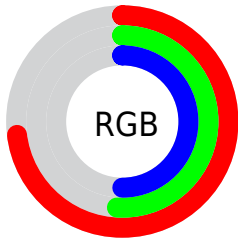
Format	Color
RYB	185, 131, 128
Decimal	12157824
CIELab	59.98, 20.39, 9.93
CIELCh	60, 22.680, 25.957
Yxy	28.1054, 0.3799, 0.3335
Android (android.graphics.Color)	4290347904 (0xFFB98380)
YUV	146.8040, -9.2704, 33.4979
Hunter-Lab	53.0145, 15.0365, 10.0911

Details

The Hex color **B98380** is a light color, and the websafe version is hex **CC9999**. A complement of this color would be **80B6B9**, and the grayscale version is **939393**.

A 20% lighter version of the original color is **F2B8B5**, and **82514F** is the 20% darker color. If you saturate the color by 10%, you get **B9716E**, and if you desaturate by 10%, it is **B99593**.

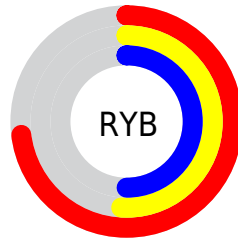
Distribution



Red (73%)

Green (51%)

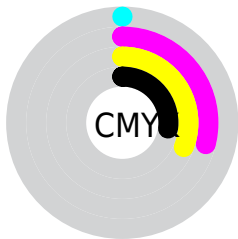
Blue (50%)



Red (73%)

Yellow (51%)

Blue (50%)

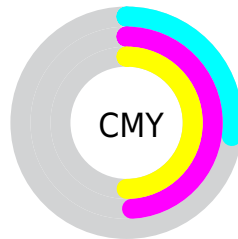


Cyan (0%)

Magenta (29%)

Yellow (31%)

Black (27%)



Cyan (27%)

Magenta (49%)

Yellow (50%)

Brightness & Saturation Gradients

These gradients show how the Hex color B98380 changes by changing the brightness by 10 percent. The first figure shows a shift by +10% for each color and the second figure -10%.

Similar to the brightness gradients but the following saturation gradients show a change of the Hex color B98380 by changing the saturation by 10% instead.

 B98380

 B98380

FFFFFF

 9D6A67

 F2B8B5

 82514F

 FFD4D0

 683A38

 FFF1ED

 4F2323

 360D0D

 220001

 000000

 B98380

 B98380

 B9716E

 B99593

 B9605B

 B9A6A5

 B94E49

 B9B8B8

 B93D36

 B9C9CA

 B92B24

 B9DBDD

 B91A11

 B9ECEF

 B90A00

 B9FEFF

 B9FFFF

Harmonies

Analogous

The Analogous color harmony consists of three colors that are next to each other on the color wheel.



B68294



B98380



B18870

Triad

The Triadic color harmony groups three colors that are evenly spaced from another and form a triangle on the color wheel.



B98380



76997A



7493B8

Complementary

The Complementary color scheme is a pair of colors which are on the opposite of each other on the color wheel.



B98380



80B6B9

Split Complementary

Split-complementary colors differ from the complementary color scheme. The scheme consists of three colors, the original color and two neighbors of the complement color.



5D99B1



B98380



619C8D

Square

The Square scheme is like the rectangle color scheme, but the four colors are evenly spaced on the color wheel.



B98380



8D956C



559BA1



908CB4

Rectangle

The Rectangle color scheme consists of four colors that form a rectangle on the color wheel.



B98380



A88C6A



559BA1



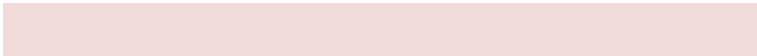
6B95B7

Sweetspot

The Sweet Spot groups the original color and five complimentary colors.



B98380



F0DBDA



B980B6



786B6B



F7F7F7



787878

Same Dimension

The Same Dimension uses a secret algorithm to generate beautiful new colors.



B98380



F09C97



B99F80



5C5353



9C0800



1C0100

Inverse Universe

The Inverse Universe completely reimagines the original color for something new.



80B6B9



97EBF0



809AB9



535B5C



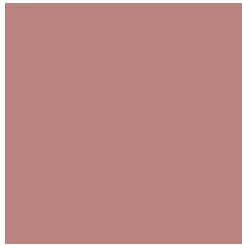
00939C



001B1C

Previews

White Background



This preview shows how the Hex color B98380 looks on a white background.

Color Contrast Check

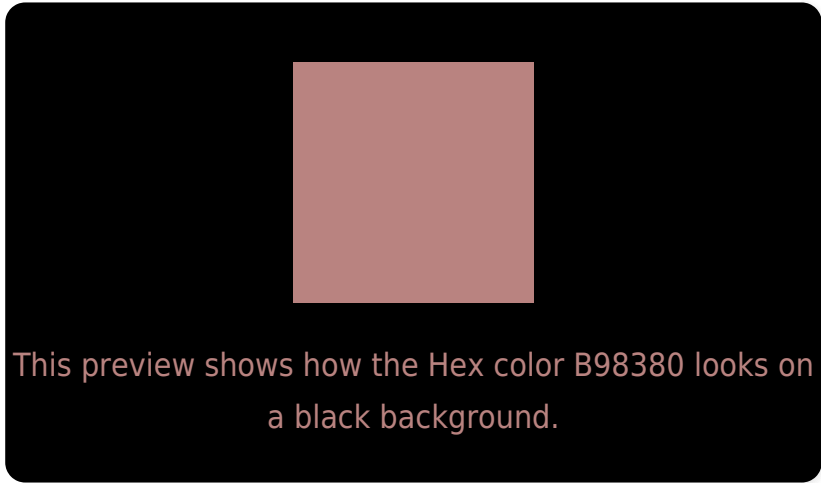
Large Text (above 18pt) WCAG AA ✓ Pass

Any Text WCAG AA × Fail

Large Text (above 18pt) WCAG AAA × Fail

Any Text WCAG AAA × Fail

Black Background



Color Contrast Check

Large Text (above 18pt) WCAG AA ✓ Pass

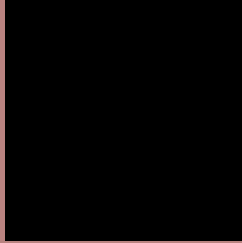
Any Text WCAG AA ✓ Pass

Large Text (above 18pt) WCAG AAA ✓ Pass

Any Text WCAG AAA × Fail

If you want to check with other color combinations, try the [Color Contrast Checker](#).

Hex B98380 Background



This preview shows how black text looks on a background with the Hex color B98380.




This preview shows how white text looks on a background with the Hex color B98380.

Color Blindness Simulation

Color vision deficiency is a very complex topic, and I could not describe the different causes any better than Wikipedia does, so if you want to learn more, you should check out their [article about color blindness](#).

Dichromacy





Tritanopia
BA818B

Trichromacy



Original Color
B98380

Protanomaly
A38B84

Deuteranomaly
AC897F

Tritanomaly
BA8287

Monochromacy



Original Color
B98380

Achromatopsia
939393

Achromatomaly
A18D8C

CSS Examples

Text

The CSS property to change the color of the text to Hex B98380 is called "color". The color property can be set on classes, ids or directly on the HTML element.

This example shows how text in the color #B98380 looks like.

```
.text, #text, p{  
    color:#B98380  
}
```

If you want to add a text shadow in that color use the text-shadow property, you can generate a text shadow directly with our [CSS Text Shadow Generator](#).

Here you see how black text with a 4 pixel #B98380 colored shadow looks like.

```
.shadow{ text-shadow: 4px 4px 2px #B98380
}
```

Border

The CSS property to change the border of an element to Hex B98380 is called "border". The border property can be set on classes, ids or directly on the HTML element.

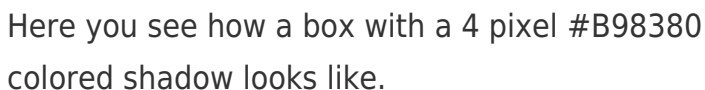
This example shows the color as border, it can be applied via the CSS property "border" or "border-color".

```
.border, #border, table{ border:4px solid
#B98380 }
```

If only the border color should be changed use the property `border-color`.

```
.border{ border-color:#B98380 }
```

If you want to add a box shadow in that color use:



Here you see how a box with a 4 pixel #B98380 colored shadow looks like.

```
.boxshadow{ -moz-box-shadow:4px 4px 4px  
4px #B98380; -webkit-box-shadow:4px 4px  
4px 4px #B98380; box-shadow:4px 4px 4px  
4px #B98380 }
```

Background

The CSS property to change the background color of an element to Hex B98380 is called "background". The background property can be set on classes, ids or directly on the HTML element.

```
.background, #background, body{  
background:#B98380 }
```

If only the background color should be changed can be used:

```
.background{ background-color:#B98380 }
```

This example shows the color as background, it is applied via the CSS property "background".

To optimize and compress your CSS code, you can use our [online CSS compressor and optimizer](#) based on csstidy. If you want to create a linear or radial gradient as background or border, check our [CSS Gradient Generator](#).

Hey! You found this booklet interesting? Support Converting Colors with the new Membership Option!

The pro membership hides all ads, plus gives you double the colors in the color bucket, and more awesome pro features!

[Learn more, Memberships starting at \\$2.50/m!](#)

**Follow me
on Twitter!**

@ConvertingColor