

Converting Colors

Hex(B9858A)

Have a look what the booklet for
Hex(B9858A) contains.

Hex(B9858A)	3
<i>Conversions</i>	4
<i>Details</i>	6
<i>Harmonies</i>	11
<i>Previews</i>	23
<i>Color Blindness Simulation</i>	26
<i>CSS Examples</i>	29

Color

Hex(B9858A)

Conversions

Conversions Part 1

Format	Color
Hex	B9858A
RGB	185, 133, 138
RGB Percent	73%, 52%, 54%
CMY	0.2745, 0.4784, 0.4588
CMYK	0.00, 0.28, 0.25, 0.27
HSL	354°, 27%, 62%
HSV	354°, 28%, 73%
XYZ	32.9826, 28.9243, 27.8893
YIQ	149.1180, 29.3870, 12.5790

Conversions

Conversions Part 2

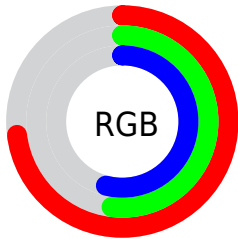
Format	Color
RYB	185, 133, 138
Decimal	12158346
CIELab	60.71, 20.69, 5.25
CIElCh	61, 21.349, 14.240
Yxy	28.9243, 0.3673, 0.3221
Android (android.graphics.Color)	4290348426 (0xFFB9858A)
YUV	149.1180, -5.4812, 31.4685
Hunter-Lab	53.7813, 15.3516, 6.9010

Details

The Hex color **B9858A** is a light color, and the websafe version is hex **CC9999**. A complement of this color would be **85B9B4**, and the grayscale version is **959595**.

A 20% lighter version of the original color is **F2BABF**, and **835358** is the 20% darker color. If you saturate the color by 10%, you get **B97379**, and if you desaturate by 10%, it is **B9989B**.

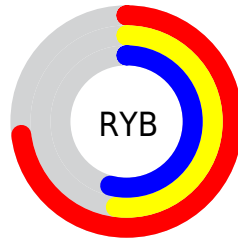
Distribution



Red (73%)

Green (52%)

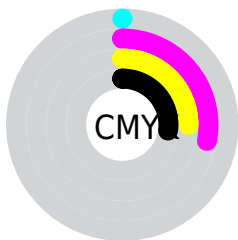
Blue (54%)



Red (73%)

Yellow (52%)

Blue (54%)

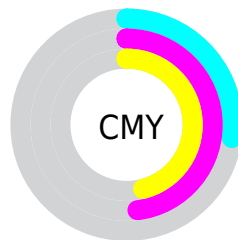


Cyan (0%)

Magenta (28%)

Yellow (25%)

Black (27%)



Cyan (27%)

Magenta (48%)

Yellow (46%)

Brightness & Saturation Gradients

These gradients show how the Hex color B9858A changes by changing the brightness by 10 percent. The first figure shows a shift by +10% for each color and the second figure -10%.

Similar to the brightness gradients but the following saturation gradients show a change of the Hex color B9858A by changing the saturation by 10% instead.

 B9858A

 B9858A

FFFFFF

 9E6C71

 F2BABF

 835358

 FFD6DB

 693B41

 FFF3F8

 4F252B

 370F17

 240001

 000000

 B9858A

 B9858A

 B97379

 B9989B

 B96069

 B9AAAB

 B94E58

 B9BDBC

 B93B47

 B9CFCD

 B92936

 B9E2DE

 B91626

 B9F4EE

 B90415

 B9FFFF

 B90012

Harmonies

Analogous

The Analogous color harmony consists of three colors that are next to each other on the color wheel.



B2869D



B9858A



B68879

Triad

The Triadic color harmony groups three colors that are evenly spaced from another and form a triangle on the color wheel.



B9858A



829977



6F97B6

Complementary

The Complementary color scheme is a pair of colors which are on the opposite of each other on the color wheel.



B9858A



85B9B4

Split Complementary

Split-complementary colors differ from the complementary color scheme. The scheme consists of three colors, the original color and two neighbors of the complement color.



5E9BAC



B9858A



6D9C88

Square

The Square scheme is like the rectangle color scheme, but the four colors are evenly spaced on the color wheel.



B9858A



97946E



5E9D9B



8891B7

Rectangle

The Rectangle color scheme consists of four colors that form a rectangle on the color wheel.



B9858A



AE8C71



5E9D9B



6899B4

Sweetspot

The Sweet Spot groups the original color and five complimentary colors.



B9858A



F0DDDE



B485B9



786C6D



F7F7F7



787878

Same Dimension

The Same Dimension uses a secret algorithm to generate beautiful new colors.



B9858A



F09EA6



B99A85



5C5354



9C000F



1C0003

Inverse Universe

The Inverse Universe completely reimagines the original color for something new.



B9858A



F09EA6



85A4B9



5C5354



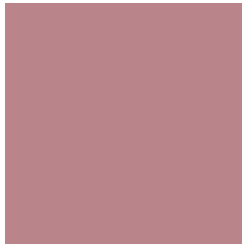
9C000F



1C0003

Previews

White Background



This preview shows how the Hex color B9858A looks on a white background.

Color Contrast Check

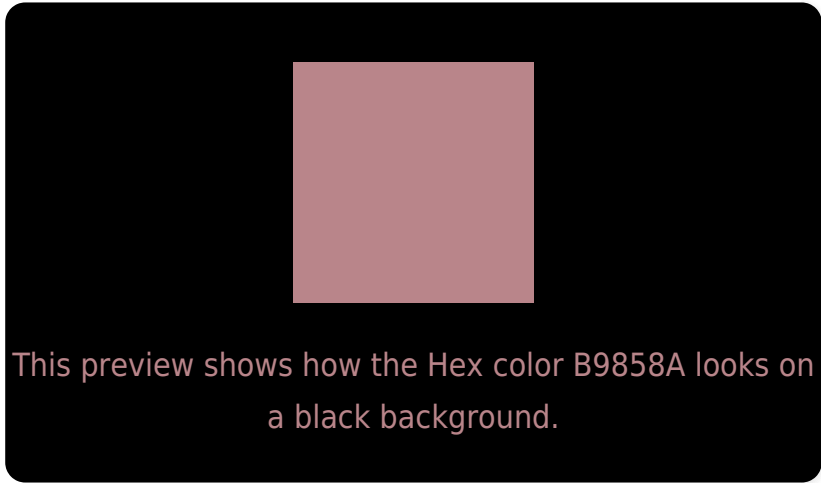
Large Text (above 18pt) WCAG AA ✓ Pass

Any Text WCAG AA × Fail

Large Text (above 18pt) WCAG AAA × Fail

Any Text WCAG AAA × Fail

Black Background



Color Contrast Check

Large Text (above 18pt) WCAG AA ✓ Pass

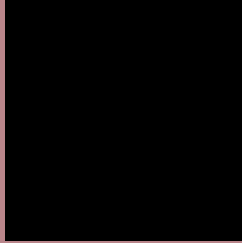
Any Text WCAG AA ✓ Pass

Large Text (above 18pt) WCAG AAA ✓ Pass

Any Text WCAG AAA × Fail

If you want to check with other color combinations, try the [Color Contrast Checker](#).

Hex B9858A Background



This preview shows how black text looks on a background with the Hex color B9858A.

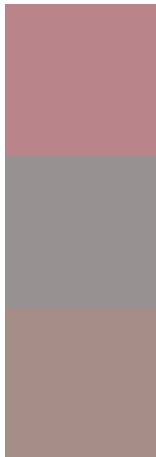


This preview shows how white text looks on a background with the Hex color B9858A.

Color Blindness Simulation

Color vision deficiency is a very complex topic, and I could not describe the different causes any better than Wikipedia does, so if you want to learn more, you should check out their [article about color blindness](#).

Dichromacy



Original Color
B9858A

Protanopia
969291

Deuteranopia
A58E88



Tritanopia
B9848E

Trichromacy



Original Color
B9858A

Protanomaly
A38D8E

Deuteranomaly
AC8B89

Tritanomaly
B9848D

Monochromacy



Original Color
B9858A

Achromatopsia
959595

Achromatomaly
A28F91

CSS Examples

Text

The CSS property to change the color of the text to Hex B9858A is called "color". The color property can be set on classes, ids or directly on the HTML element.

This example shows how text in the color #B9858A looks like.

```
.text, #text, p{  
    color:#B9858A  
}
```

If you want to add a text shadow in that color use the text-shadow property, you can generate a text shadow directly with our [CSS Text Shadow Generator](#).

Here you see how black text with a 4 pixel #B9858A colored shadow looks like.

```
.shadow{ text-shadow: 4px 4px 2px #B9858A
}
```

Border

The CSS property to change the border of an element to Hex B9858A is called "border". The border property can be set on classes, ids or directly on the HTML element.

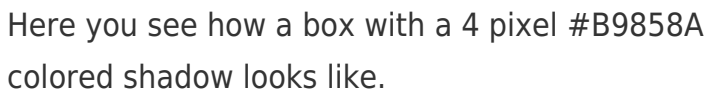
This example shows the color as border, it can be applied via the CSS property "border" or "border-color".

```
.border, #border, table{ border:4px solid
#B9858A }
```

If only the border color should be changed use the property `border-color`.

```
.border{ border-color:#B9858A }
```

If you want to add a box shadow in that color use:



Here you see how a box with a 4 pixel #B9858A colored shadow looks like.

```
.boxshadow{ -moz-box-shadow:4px 4px 4px  
4px #B9858A; -webkit-box-shadow:4px 4px  
4px 4px #B9858A; box-shadow:4px 4px 4px  
4px #B9858A }
```

Background

The CSS property to change the background color of an element to Hex B9858A is called "background". The background property can be set on classes, ids or directly on the HTML element.

```
.background, #background, body{  
background:#B9858A }
```

If only the background color should be changed can be used:

```
.background{ background-color:#B9858A }
```

This example shows the color as background, it is applied via the CSS property "background".

To optimize and compress your CSS code, you can use our [online CSS compressor and optimizer](#) based on csstidy. If you want to create a linear or radial gradient as background or border, check our [CSS Gradient Generator](#).

Hey! You found this booklet interesting? Support Converting Colors with the new Membership Option!

The pro membership hides all ads, plus gives you double the colors in the color bucket, and more awesome pro features!

[Learn more, Memberships starting at \\$2.50/m!](#)

**Follow me
on Twitter!**

@ConvertingColor