

Converting Colors

Hex(B98B8B)

Have a look what the booklet for
Hex(B98B8B) contains.

Hex(B98B8B)	3
<i>Conversions</i>	4
<i>Details</i>	6
<i>Harmonies</i>	11
<i>Previews</i>	23
<i>Color Blindness Simulation</i>	26
<i>CSS Examples</i>	29

Color

Hex(B98B8B)

Conversions

Conversions Part 1

Format	Color
Hex	B98B8B
RGB	185, 139, 139
RGB Percent	73%, 55%, 55%
CMY	0.2745, 0.4549, 0.4549
CMYK	0.00, 0.25, 0.25, 0.27
HSL	0°, 25%, 64%
HSV	0°, 25%, 73%
XYZ	33.9004, 30.6436, 28.5542
YIQ	152.7540, 27.4160, 9.7520

Conversions

Conversions Part 2

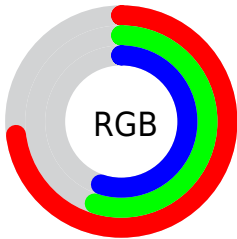
Format	Color
RYB	185, 139, 139
Decimal	12159883
CIELab	62.21, 17.50, 6.82
CIElCh	62, 18.778, 21.298
Yxy	30.6436, 0.3641, 0.3292
Android (android.graphics.Color)	4290349963 (0xFFB98B8B)
YUV	152.7540, -6.7807, 28.2797
Hunter-Lab	55.3567, 12.4392, 8.1666

Details

The Hex color **B98B8B** is a light color, and the websafe version is hex **CC9999**. A complement of this color would be **8BB9B9**, and the grayscale version is **999999**.

A 20% lighter version of the original color is **F2C1C0**, and **835959** is the 20% darker color. If you saturate the color by 10%, you get **B97979**, and if you desaturate by 10%, it is **B99D9D**.

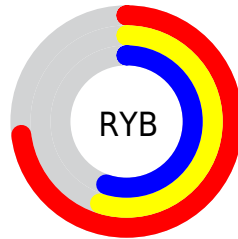
Distribution



Red (73%)

Green (55%)

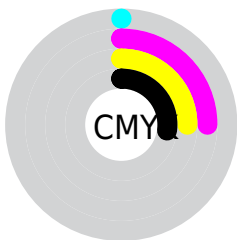
Blue (55%)



Red (73%)

Yellow (55%)

Blue (55%)

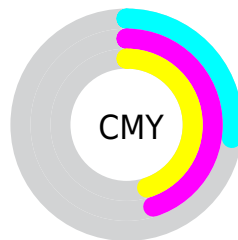


Cyan (0%)

Magenta (25%)

Yellow (25%)

Black (27%)



Cyan (27%)

Magenta (45%)

Yellow (45%)

Brightness & Saturation Gradients

These gradients show how the Hex color B98B8B changes by changing the brightness by 10 percent. The first figure shows a shift by +10% for each color and the second figure -10%.

Similar to the brightness gradients but the following saturation gradients show a change of the Hex color B98B8B by changing the saturation by 10% instead.



B98B8B



B98B8B

FFFFFF



9E7172



F2C1C0



835959



FFDDDC



694142



FFF9F9



502A2C



381517



240000



000000



B98B8B



B98B8B



B97979



B99D9D

 B96666

 B9B0B0

 B95353

 B9C3C3

 B94141

 B9D5D5

 B92F2F

 B9E7E7

 B91C1C

 B9FAFA

 B90909

 B9FFFF

 B90000

Harmonies

Analogous

The Analogous color harmony consists of three colors that are next to each other on the color wheel.



B58B9C



B98B8B



B48E7D

Triad

The Triadic color harmony groups three colors that are evenly spaced from another and form a triangle on the color wheel.



B98B8B



839D81



7D99B7

Complementary

The Complementary color scheme is a pair of colors which are on the opposite of each other on the color wheel.



B98B8B



8BB9B9

Split Complementary

Split-complementary colors differ from the complementary color scheme. The scheme consists of three colors, the original color and two neighbors of the complement color.



6C9EB0



B98B8B



72A091

Square

The Square scheme is like the rectangle color scheme, but the four colors are evenly spaced on the color wheel.



B98B8B



969977



69A0A2



9394B5

Rectangle

The Rectangle color scheme consists of four colors that form a rectangle on the color wheel.



B98B8B



AD9277



69A0A2



769BB5

Sweetspot

The Sweet Spot groups the original color and five complimentary colors.



B98B8B



F0DFDF



B98BB9



786E6E



F7F7F7



787878

Same Dimension

The Same Dimension uses a secret algorithm to generate beautiful new colors.



B98B8B



F0A8A8



B9A28B



5C5353



9C0000



1C0000

Inverse Universe

The Inverse Universe completely reimagines the original color for something new.



8BB9B9



A8F0F0



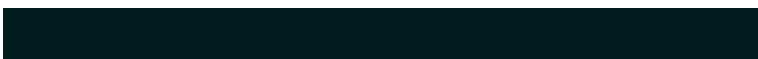
8BA2B9



535C5C



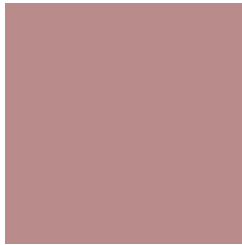
009C9C



001C1C

Previews

White Background



This preview shows how the Hex color B98B8B looks on a white background.

Color Contrast Check

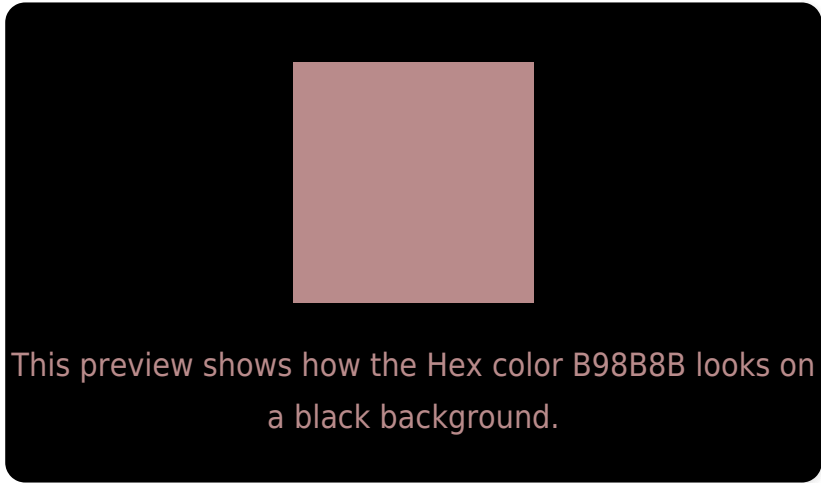
Large Text (above 18pt) WCAG AA × Fail

Any Text WCAG AA × Fail

Large Text (above 18pt) WCAG AAA × Fail

Any Text WCAG AAA × Fail

Black Background



Color Contrast Check

Large Text (above 18pt) WCAG AA ✓ Pass

Any Text WCAG AA ✓ Pass

Large Text (above 18pt) WCAG AAA ✓ Pass

Any Text WCAG AAA ✓ Pass

If you want to check with other color combinations, try the [Color Contrast Checker](#).

Hex B98B8B Background



This preview shows how black text looks on a background with the Hex color B98B8B.



This preview shows how white text looks on a background with the Hex color B98B8B.

Color Blindness Simulation

Color vision deficiency is a very complex topic, and I could not describe the different causes any better than Wikipedia does, so if you want to learn more, you should check out their [article about color blindness](#).


Dichromacy



Original Color
B98B8B

Protanopia
9B9691

Deuteranopia
AA918A



Tritanopia
BA8A94

Trichromacy



Original Color
B98B8B

Protanomaly
A6928F

Deuteranomaly
AF8F8A

Tritanomaly
BA8A91

Monochromacy



Original Color
B98B8B

Achromatopsia
999999

Achromatomaly
A59494

CSS Examples

Text

The CSS property to change the color of the text to Hex B98B8B is called "color". The color property can be set on classes, ids or directly on the HTML element.

This example shows how text in the color #B98B8B looks like.

```
.text, #text, p{  
    color:#B98B8B  
}
```

If you want to add a text shadow in that color use the text-shadow property, you can generate a text shadow directly with our [CSS Text Shadow Generator](#).

Here you see how black text with a 4 pixel #B98B8B colored shadow looks like.

```
.shadow{ text-shadow: 4px 4px 2px #B98B8B
}
```

Border

The CSS property to change the border of an element to Hex B98B8B is called "border". The border property can be set on classes, ids or directly on the HTML element.

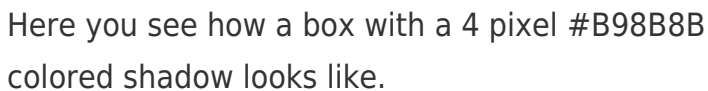
This example shows the color as border, it can be applied via the CSS property "border" or "border-color".

```
.border, #border, table{ border:4px solid
#B98B8B }
```

If only the border color should be changed use the property `border-color`.

```
.border{ border-color:#B98B8B }
```

If you want to add a box shadow in that color use:



Here you see how a box with a 4 pixel #B98B8B colored shadow looks like.

```
.boxshadow{ -moz-box-shadow:4px 4px 4px  
4px #B98B8B; -webkit-box-shadow:4px 4px  
4px 4px #B98B8B; box-shadow:4px 4px 4px  
4px #B98B8B }
```

Background

The CSS property to change the background color of an element to Hex B98B8B is called "background". The background property can be set on classes, ids or directly on the HTML element.

```
.background, #background, body{  
background:#B98B8B }
```

If only the background color should be changed can be used:

```
.background{ background-color:#B98B8B }
```

This example shows the color as background, it is applied via the CSS property "background".

To optimize and compress your CSS code, you can use our [online CSS compressor and optimizer](#) based on csstidy. If you want to create a linear or radial gradient as background or border, check our [CSS Gradient Generator](#).

Hey! You found this booklet interesting? Support Converting Colors with the new Membership Option!

The pro membership hides all ads, plus gives you double the colors in the color bucket, and more awesome pro features!

[Learn more, Memberships starting at \\$2.50/m!](#)

**Follow me
on Twitter!**

@ConvertingColor