

Converting Colors

Hex(B98C56)

Have a look what the booklet for
Hex(B98C56) contains.

Hex(B98C56)	3
<i>Conversions</i>	4
<i>Details</i>	6
<i>Harmonies</i>	11
<i>Previews</i>	23
<i>Color Blindness Simulation</i>	26
<i>CSS Examples</i>	29

Color

Hex(B98C56)

Conversions

Conversions Part 1

Format	Color
Hex	B98C56
RGB	185, 140, 86
RGB Percent	73%, 55%, 34%
CMY	0.2745, 0.4510, 0.6627
CMYK	0.00, 0.24, 0.54, 0.27
HSL	33°, 41%, 53%
HSV	33°, 54%, 73%
XYZ	31.0654, 29.7423, 12.9076
YIQ	147.2990, 44.1540, -7.2540

Conversions

Conversions Part 2

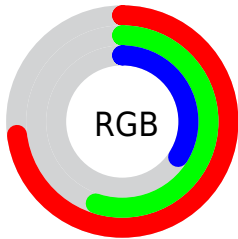
Format	Color
R_{YB}	169, 185, 86
Decimal	12160086
CIE Lab	61.43, 10.66, 35.25
CIE LCh	61, 36.830, 73.176
Yxy	29.7423, 0.4214, 0.4035
Android (android.graphics.Color)	4290350166 (0xFFB98C56)
YUV	147.2990, -30.2204, 33.0638
Hunter-Lab	54.5365, 6.2391, 24.1429

Details

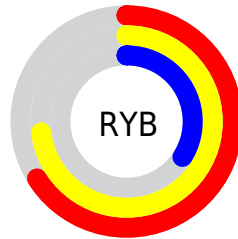
The Hex color **B98C56** is a dark color, and the websafe version is hex **CC9966**. A complement of this color would be **5683B9**, and the grayscale version is **949494**.

A 20% lighter version of the original color is **F3C289**, and **815A27** is the 20% darker color. If you saturate the color by 10%, you get **B98444**, and if you desaturate by 10%, it is **B99469**.

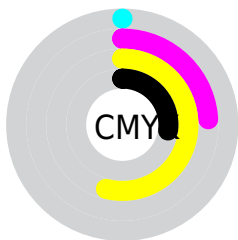
Distribution



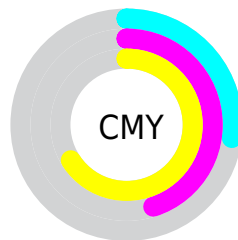
- Red (73%)
- Green (55%)
- Blue (34%)



- Red (66%)
- Yellow (73%)
- Blue (34%)



- Cyan (0%)
- Magenta (24%)
- Yellow (54%)
- Black (27%)



- Cyan (27%)
- Magenta (45%)
- Yellow (66%)

Brightness & Saturation Gradients

These gradients show how the Hex color B98C56 changes by changing the brightness by 10 percent. The first figure shows a shift by +10% for each color and the second figure -10%.

Similar to the brightness gradients but the following saturation gradients show a change of the Hex color B98C56 by changing the saturation by 10% instead.

 B98C56

 B98C56

FFFFFF

 9D733E

 F3C289

 815A27

 FFDDA3

 66430F

 FFFABF

 4C2C00

 FFFFDB

 321800

 FFFFF7

 1B0000

 000000

 B98C56

 B98C56

 B98444

 B99469

 B97B31

 B99D7B

 B9731E

 B9A58E

 B96A0C

 B9AEA0

 B96500

 B9B6B3

 B9BEC5

 B9C7D8

 B9CFEA

 B9D8FD

Harmonies

Analogous

The Analogous color harmony consists of three colors that are next to each other on the color wheel.



CD8169



B98C56



9B9754

Triad

The Triadic color harmony groups three colors that are evenly spaced from another and form a triangle on the color wheel.



B98C56



01A6A2



AA87C4

Complementary

The Complementary color scheme is a pair of colors which are on the opposite of each other on the color wheel.



B98C56



5683B9

Split Complementary

Split-complementary colors differ from the complementary color scheme. The scheme consists of three colors, the original color and two neighbors of the complement color.



7C93D4



B98C56



00A3C0

Square

The Square scheme is like the rectangle color scheme, but the four colors are evenly spaced on the color wheel.



B98C56



4CA480



3E9DD2



C87DA8

Rectangle

The Rectangle color scheme consists of four colors that form a rectangle on the color wheel.



B98C56



849D5C



3E9DD2



9C8BCB

Sweetspot

The Sweet Spot groups the original color and five complimentary colors.



B98C56



F0DEC9



B95684



786D61



F7F7F7



787878

Same Dimension

The Same Dimension uses a secret algorithm to generate beautiful new colors.



B98C56



F0AA56



B6B956



5C5853



9C5500



1C0F00

Inverse Universe

The Inverse Universe completely reimagines the original color for something new.



5683B9



569CF0



5956B9



53575C



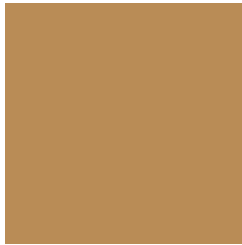
00479C



000D1C

Previews

White Background



This preview shows how the Hex color B98C56 looks on a white background.

Color Contrast Check

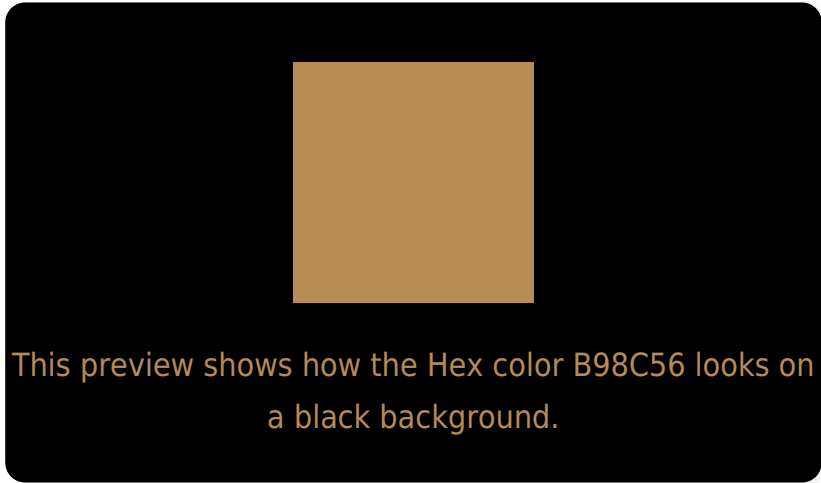
Large Text (above 18pt) WCAG AA ✓ Pass

Any Text WCAG AA × Fail

Large Text (above 18pt) WCAG AAA × Fail

Any Text WCAG AAA × Fail

Black Background



Color Contrast Check

Large Text (above 18pt) WCAG AA ✓ Pass

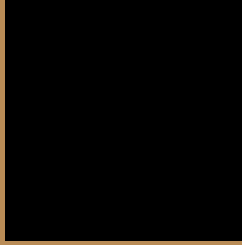
Any Text WCAG AA ✓ Pass

Large Text (above 18pt) WCAG AAA ✓ Pass

Any Text WCAG AAA × Fail

If you want to check with other color combinations, try the [Color Contrast Checker](#).

Hex B98C56 Background



This preview shows how black text looks on a background with the Hex color B98C56.

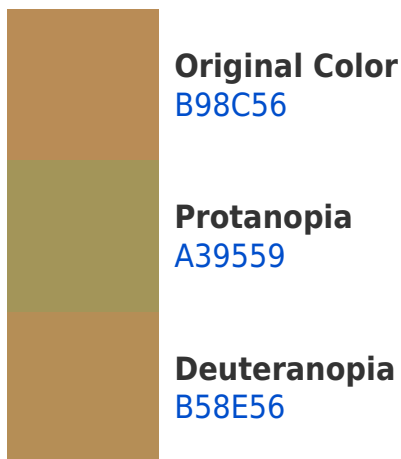



This preview shows how white text looks on a background with the Hex color B98C56.

Color Blindness Simulation

Color vision deficiency is a very complex topic, and I could not describe the different causes any better than Wikipedia does, so if you want to learn more, you should check out their [article about color blindness](#).

Dichromacy



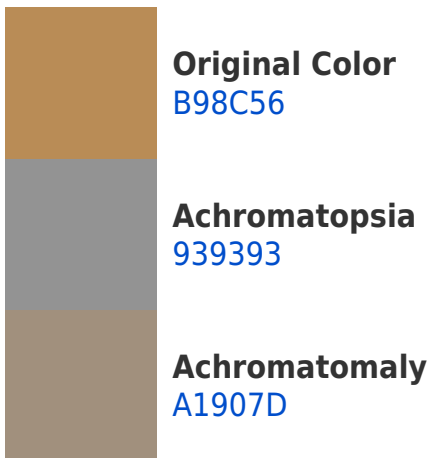


Tritanopia
BE858F

Trichromacy



Monochromacy



CSS Examples

Text

The CSS property to change the color of the text to Hex B98C56 is called "color". The color property can be set on classes, ids or directly on the HTML element.

This example shows how text in the color #B98C56 looks like.

```
.text, #text, p{  
    color:#B98C56  
}
```

If you want to add a text shadow in that color use the text-shadow property, you can generate a text shadow directly with our [CSS Text Shadow Generator](#).

Here you see how black text with a 4 pixel #B98C56 colored shadow looks like.

```
.shadow{ text-shadow: 4px 4px 2px #B98C56  
}
```

Border

The CSS property to change the border of an element to Hex B98C56 is called "border". The border property can be set on classes, ids or directly on the HTML element.

This example shows the color as border, it can be applied via the CSS property "border" or "border-color".

```
.border, #border, table{ border:4px solid  
#B98C56 }
```

If only the border color should be changed use the property `border-color`.

```
.border{ border-color:#B98C56 }
```

If you want to add a box shadow in that color use:

Here you see how a box with a 4 pixel #B98C56 colored shadow looks like.

```
.boxshadow{ -moz-box-shadow:4px 4px 4px  
4px #B98C56; -webkit-box-shadow:4px 4px  
4px 4px #B98C56; box-shadow:4px 4px 4px  
4px #B98C56 }
```

Background

The CSS property to change the background color of an element to Hex B98C56 is called "background". The background property can be set on classes, ids or directly on the HTML element.

```
.background, #background, body{  
background:#B98C56 }
```

If only the background color should be changed can be used:

```
.background{ background-color:#B98C56 }
```

This example shows the color as background, it is applied via the CSS property "background".

To optimize and compress your CSS code, you can use our [online CSS compressor and optimizer](#) based on csstidy. If you want to create a linear or radial gradient as background or border, check our [CSS Gradient Generator](#).

Hey! You found this booklet interesting? Support Converting Colors with the new Membership Option!

The pro membership hides all ads, plus gives you double the colors in the color bucket, and more awesome pro features!

[Learn more, Memberships starting at \\$2.50/m!](#)

**Follow me
on Twitter!**

@ConvertingColor