

# Converting Colors

Hex(B98C8C)

Have a look what the booklet for  
Hex(B98C8C) contains.

<b>Hex(B98C8C)</b> .....	3
<b><i>Conversions</i></b> .....	4
<b><i>Details</i></b> .....	6
<b><i>Harmonies</i></b> .....	11
<b><i>Previews</i></b> .....	23
<b><i>Color Blindness Simulation</i></b> .....	26
<b><i>CSS Examples</i></b> .....	29

# **Color**

**Hex(B98C8C)**

# Conversions

## Conversions Part 1

Format	Color
Hex	B98C8C
RGB	185, 140, 140
RGB Percent	73%, 55%, 55%
CMY	0.2745, 0.4510, 0.4510
CMYK	0.00, 0.24, 0.24, 0.27
HSL	0°, 24%, 64%
HSV	0°, 24%, 73%
XYZ	34.1193, 30.9639, 28.9893
YIQ	153.4550, 26.8200, 9.5400

# Conversions

## Conversions Part 2

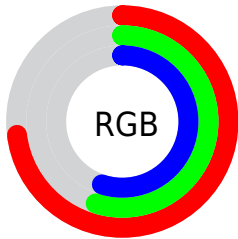
Format	Color
R <sub>Y</sub> B	185, 140, 140
Decimal	12160140
CIE Lab	62.48, 17.09, 6.64
CIE LCh	62, 18.333, 21.241
Yxy	30.9639, 0.3627, 0.3291
Android (android.graphics.Color)	4290350220 (0xFFB98C8C)
YUV	153.4550, -6.6333, 27.6650
Hunter-Lab	55.6452, 12.0695, 8.0636

# Details

The Hex color **B98C8C** is a light color, and the websafe version is hex **CC9999**. A complement of this color would be **8CB9B9**, and the grayscale version is **9A9A9A**.

A 20% lighter version of the original color is **F2C2C1**, and **835A5A** is the 20% darker color. If you saturate the color by 10%, you get **B97A7A**, and if you desaturate by 10%, it is **B99F9F**.

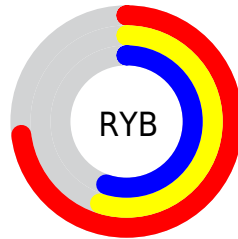
# Distribution



Red (73%)

Green (55%)

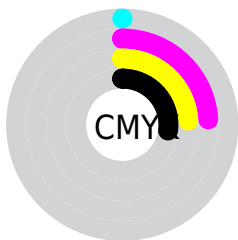
Blue (55%)



Red (73%)

Yellow (55%)

Blue (55%)

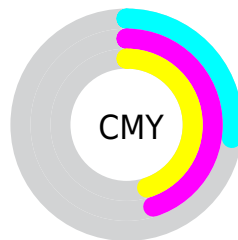


Cyan (0%)

Magenta (24%)

Yellow (24%)

Black (27%)



Cyan (27%)

Magenta (45%)

Yellow (45%)

# Brightness & Saturation Gradients

These gradients show how the Hex color B98C8C changes by changing the brightness by 10 percent. The first figure shows a shift by +10% for each color and the second figure -10%.

Similar to the brightness gradients but the following saturation gradients show a change of the Hex color B98C8C by changing the saturation by 10% instead.



 B98C8C

 B98C8C

FFFFFF

 9E7273

 F2C2C1

 835A5A

 FFDEDD

 694243

 FFFAFA

 502B2D

 381618

 240000

 000000

 B98C8C

 B98C8C

 B97A7A

 B99F9F

 B96767

 B9B1B1

 B95555

 B9C4C4

 B94242

 B9D6D6

 B93030

 B9E9E9

 B91D1D

 B9FBFB

 B90A0A

 B9FFFF

 B90000

# Harmonies

## Analogous

The Analogous color harmony consists of three colors that are next to each other on the color wheel.



B58C9D



B98C8C



B48F7E

# Triad

The Triadic color harmony groups three colors that are evenly spaced from another and form a triangle on the color wheel.



B98C8C



859E82



7E9AB7

# Complementary

The Complementary color scheme is a pair of colors which are on the opposite of each other on the color wheel.



B98C8C



8CB9B9

# Split Complementary

Split-complementary colors differ from the complementary color scheme. The scheme consists of three colors, the original color and two neighbors of the complement color.



6E9EB0



B98C8C



74A092

# Square

The Square scheme is like the rectangle color scheme, but the four colors are evenly spaced on the color wheel.



B98C8C



979A79



6BA0A2



9495B5

# Rectangle

The Rectangle color scheme consists of four colors that form a rectangle on the color wheel.



B98C8C



AD9379



6BA0A2



789CB5



# Sweetspot

The Sweet Spot groups the original color and five complimentary colors.



B98C8C



F0DFDF



B98CB9



786E6E



F7F7F7



787878



# Same Dimension

The Same Dimension uses a secret algorithm to generate beautiful new colors.



B98C8C



F0AAAA



B9A38C



5C5353



9C0000



1C0000



# Inverse Universe

The Inverse Universe completely reimagines the original color for something new.



8CB9B9



AAF0F0



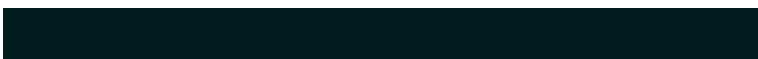
8CA3B9



535C5C



009C9C

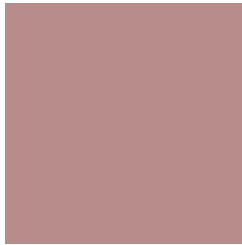


001C1C



# Previews

## White Background



This preview shows how the Hex color B98C8C looks on a white background.

## Color Contrast Check

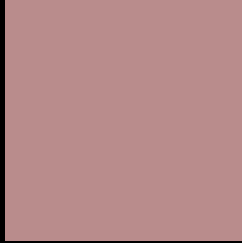
Large Text (above 18pt) WCAG AA × Fail

Any Text WCAG AA × Fail

Large Text (above 18pt) WCAG AAA × Fail

Any Text WCAG AAA × Fail

# Black Background



This preview shows how the Hex color B98C8C looks on a black background.

## Color Contrast Check

Large Text (above 18pt) WCAG AA ✓ Pass

Any Text WCAG AA ✓ Pass

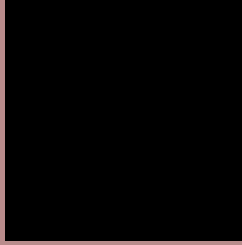
Large Text (above 18pt) WCAG AAA ✓ Pass

Any Text WCAG AAA ✓ Pass

If you want to check with other color combinations, try the [Color Contrast Checker](#).



## Hex B98C8C Background



This preview shows how black text looks on a background with the Hex color B98C8C.



This preview shows how white text looks on a background with the Hex color B98C8C.

# Color Blindness Simulation

Color vision deficiency is a very complex topic, and I could not describe the different causes any better than Wikipedia does, so if you want to learn more, you should check out their [article about color blindness](#).

## Dichromacy



**Original Color**  
B98C8C

**Protanopia**  
9B9792

**Deuteranopia**  
AB928B



**Tritanopia**  
BA8B95

# Trichromacy



**Original Color**  
B98C8C

**Protanomaly**  
A69390

**Deuteranomaly**  
B0908B

**Tritanomaly**  
BA8B92

# Monochromacy



**Original Color**  
B98C8C

**Achromatopsia**  
999999

**Achromatomaly**  
A59494

# CSS Examples

## Text

The CSS property to change the color of the text to Hex B98C8C is called "color". The color property can be set on classes, ids or directly on the HTML element.

This example shows how text in the color #B98C8C looks like.

```
.text, #text, p{  
    color:#B98C8C  
}
```

If you want to add a text shadow in that color use the text-shadow property, you can generate a text shadow directly with our [CSS Text Shadow Generator](#).

Here you see how black text with a 4 pixel #B98C8C colored shadow looks like.

```
.shadow{ text-shadow: 4px 4px 2px #B98C8C
}
```

## Border

The CSS property to change the border of an element to Hex B98C8C is called "border". The border property can be set on classes, ids or directly on the HTML element.

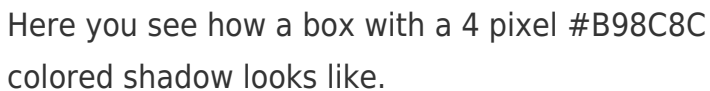
This example shows the color as border, it can be applied via the CSS property "border" or "border-color".

```
.border, #border, table{ border:4px solid
#B98C8C }
```

If only the border color should be changed use the property `border-color`.

```
.border{ border-color:#B98C8C }
```

If you want to add a box shadow in that color use:



Here you see how a box with a 4 pixel #B98C8C colored shadow looks like.

```
.boxshadow{ -moz-box-shadow:4px 4px 4px  
4px #B98C8C; -webkit-box-shadow:4px 4px  
4px 4px #B98C8C; box-shadow:4px 4px 4px  
4px #B98C8C }
```

# Background

The CSS property to change the background color of an element to Hex B98C8C is called "background". The background property can be set on classes, ids or directly on the HTML element.

```
.background, #background, body{  
background:#B98C8C }
```

If only the background color should be changed can be used:

```
.background{ background-color:#B98C8C }
```

This example shows the color as background, it is applied via the CSS property "background".

To optimize and compress your CSS code, you can use our [online CSS compressor and optimizer](#) based on csstidy. If you want to create a linear or radial gradient as background or border, check our [CSS Gradient Generator](#).



Hey! You found this booklet interesting? Support Converting Colors with the new Membership Option!

The pro membership hides all ads, plus gives you double the colors in the color bucket, and more awesome pro features!

**[Learn more, Memberships starting at \\$2.50/m!](#)**

**Follow me  
on Twitter!**

@ConvertingColor