

# Converting Colors

Hex(B98D56)

Have a look what the booklet for  
Hex(B98D56) contains.

<b>Hex(B98D56)</b> .....	3
<i><b>Conversions</b></i> .....	4
<i><b>Details</b></i> .....	6
<i><b>Harmonies</b></i> .....	11
<i><b>Previews</b></i> .....	23
<i><b>Color Blindness Simulation</b></i> .....	26
<i><b>CSS Examples</b></i> .....	29

**Color**

**Hex(B98D56)**

# Conversions

## Conversions Part 1

Format	Color
Hex	B98D56
RGB	185, 141, 86
RGB Percent	73%, 55%, 34%
CMY	0.2745, 0.4471, 0.6627
CMYK	0.00, 0.24, 0.54, 0.27
HSL	33°, 41%, 53%
HSV	33°, 54%, 73%
XYZ	31.2122, 30.0359, 12.9566
YIQ	147.8860, 43.8790, -7.7770

# Conversions

## Conversions Part 2

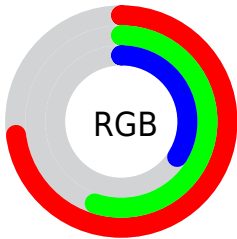
<b>Format</b>	<b>Color</b>
<b>RYB</b>	165, 185, 86
Decimal	12160342
CIELab	61.69, 10.11, 35.57
CIELCh	62, 36.976, 74.137
Yxy	30.0359, 0.4206, 0.4048
Android (android.graphics.Color)	4290350422 (0xFFB98D56)
YUV	147.8860, -30.5098, 32.5490
Hunter-Lab	54.8050, 5.7492, 24.3467

# Details

The Hex color **B98D56** is a dark color, and the websafe version is hex **CC9966**. A complement of this color would be **5682B9**, and the grayscale version is **949494**.

A 20% lighter version of the original color is **F3C389**, and **815B26** is the 20% darker color. If you saturate the color by 10%, you get **B98544**, and if you desaturate by 10%, it is **B99569**.

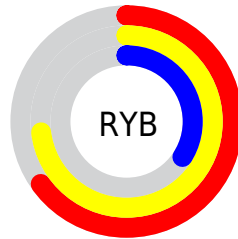
# Distribution



Red (73%)

Green (55%)

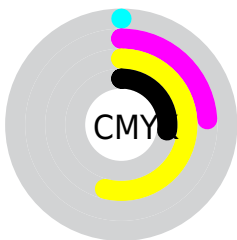
Blue (34%)



Red (65%)

Yellow (73%)

Blue (34%)

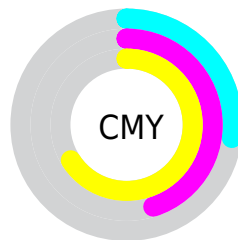


Cyan (0%)

Magenta (24%)

Yellow (54%)

Black (27%)



Cyan (27%)

Magenta (45%)

Yellow (66%)

# Brightness & Saturation Gradients

These gradients show how the Hex color B98D56 changes by changing the brightness by 10 percent. The first figure shows a shift by +10% for each color and the second figure -10%.

Similar to the brightness gradients but the following saturation gradients show a change of the Hex color B98D56 by changing the saturation by 10% instead.




 B98D56

 B98D56

FFFFFF

 9D733E

 F3C389

 815B26

 FFDEA3

 66440F

 FFFBBF

 4C2D00

 FFFFDB

 331900

 FFFFF8

 1B0000

 000000

 B98D56

 B98D56

 B98544

 B99569

 B97D31

 B99D7B

 B9741E

 B9A68E

 B96C0C

 B9AEA0

 B96700

 B9B6B3

 B9BEC5

 B9C7D8

 B9CFEA

 B9D7FD

# Harmonies

## Analogous

The Analogous color harmony consists of three colors that are next to each other on the color wheel.



CE8269



B98D56



9B9854

# Triad

The Triadic color harmony groups three colors that are evenly spaced from another and form a triangle on the color wheel.



B98D56



00A6A4



AC87C4

# Complementary

The Complementary color scheme is a pair of colors which are on the opposite of each other on the color wheel.



B98D56



5682B9

# Split Complementary

Split-complementary colors differ from the complementary color scheme. The scheme consists of three colors, the original color and two neighbors of the complement color.



7E93D4



B98D56



00A4C2

# Square

The Square scheme is like the rectangle color scheme, but the four colors are evenly spaced on the color wheel.



B98D56



4BA582



409DD3



CA7DA8

# Rectangle

The Rectangle color scheme consists of four colors that form a rectangle on the color wheel.



B98D56



839E5D



409DD3



9E8BCB

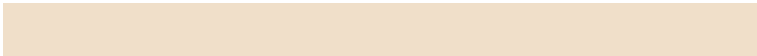


# Sweetspot

The Sweet Spot groups the original color and five complimentary colors.



B98D56



F0DFC9



B95683



786E61



F7F7F7



787878



# Same Dimension

The Same Dimension uses a secret algorithm to generate beautiful new colors.



B98D56



F0AC56



B4B956



5C5853



9C5600



1C1000



# Inverse Universe

The Inverse Universe completely reimagines the original color for something new.



5682B9



569AF0



5B56B9



53575C



00459C

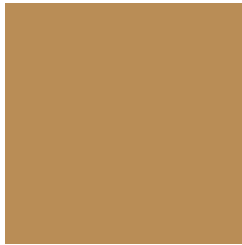


000C1C



# Previews

## White Background



This preview shows how the Hex color B98D56 looks on a white background.

## Color Contrast Check

Large Text (above 18pt) WCAG AA ✓ Pass

Any Text WCAG AA ✗ Fail

Large Text (above 18pt) WCAG AAA ✗ Fail

Any Text WCAG AAA ✗ Fail

# Black Background



## Color Contrast Check

Large Text (above 18pt) WCAG AA ✓ Pass

Any Text WCAG AA ✓ Pass

Large Text (above 18pt) WCAG AAA ✓ Pass

Any Text WCAG AAA ✓ Pass

If you want to check with other color combinations, try the [Color Contrast Checker](#).



## Hex B98D56 Background



This preview shows how black text looks on a background with the Hex color B98D56.



This preview shows how white text looks on a background with the Hex color B98D56.

# Color Blindness Simulation

Color vision deficiency is a very complex topic, and I could not describe the different causes any better than Wikipedia does, so if you want to learn more, you should check out their [article about color blindness](#).

## Dichromacy



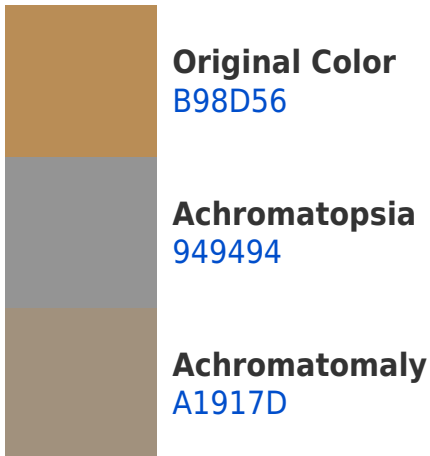


**Tritanopia**  
BE8690

# Trichromacy



# Monochromacy



# CSS Examples

## Text

The CSS property to change the color of the text to Hex B98D56 is called "color". The color property can be set on classes, ids or directly on the HTML element.

This example shows how text in the color #B98D56 looks like.

```
.text, #text, p{  
    color:#B98D56  
}
```

If you want to add a text shadow in that color use the text-shadow property, you can generate a text shadow directly with our [CSS Text Shadow Generator](#).

Here you see how black text with a 4 pixel #B98D56 colored shadow looks like.

```
.shadow{ text-shadow: 4px 4px 2px #B98D56
}
```

## Border

The CSS property to change the border of an element to Hex B98D56 is called "border". The border property can be set on classes, ids or directly on the HTML element.

This example shows the color as border, it can be applied via the CSS property "border" or "border-color".

```
.border, #border, table{ border:4px solid
#B98D56 }
```

If only the border color should be changed use the property `border-color`.

```
.border{ border-color:#B98D56 }
```

If you want to add a box shadow in that color use:

Here you see how a box with a 4 pixel #B98D56 colored shadow looks like.

```
.boxshadow{ -moz-box-shadow:4px 4px 4px  
4px #B98D56; -webkit-box-shadow:4px 4px  
4px 4px #B98D56; box-shadow:4px 4px 4px  
4px #B98D56 }
```

# Background

The CSS property to change the background color of an element to Hex B98D56 is called "background". The background property can be set on classes, ids or directly on the HTML element.

```
.background, #background, body{  
background:#B98D56 }
```

If only the background color should be changed can be used:

```
.background{ background-color:#B98D56 }
```

This example shows the color as background, it is applied via the CSS property "background".

To optimize and compress your CSS code, you can use our [online CSS compressor and optimizer](#) based on csstidy. If you want to create a linear or radial gradient as background or border, check our [CSS Gradient Generator](#).



Hey! You found this booklet interesting? Support Converting Colors with the new Membership Option!

The pro membership hides all ads, plus gives you double the colors in the color bucket, and more awesome pro features!

**[Learn more, Memberships starting at \\$2.50/m!](#)**

**Follow me  
on Twitter!**

@ConvertingColor